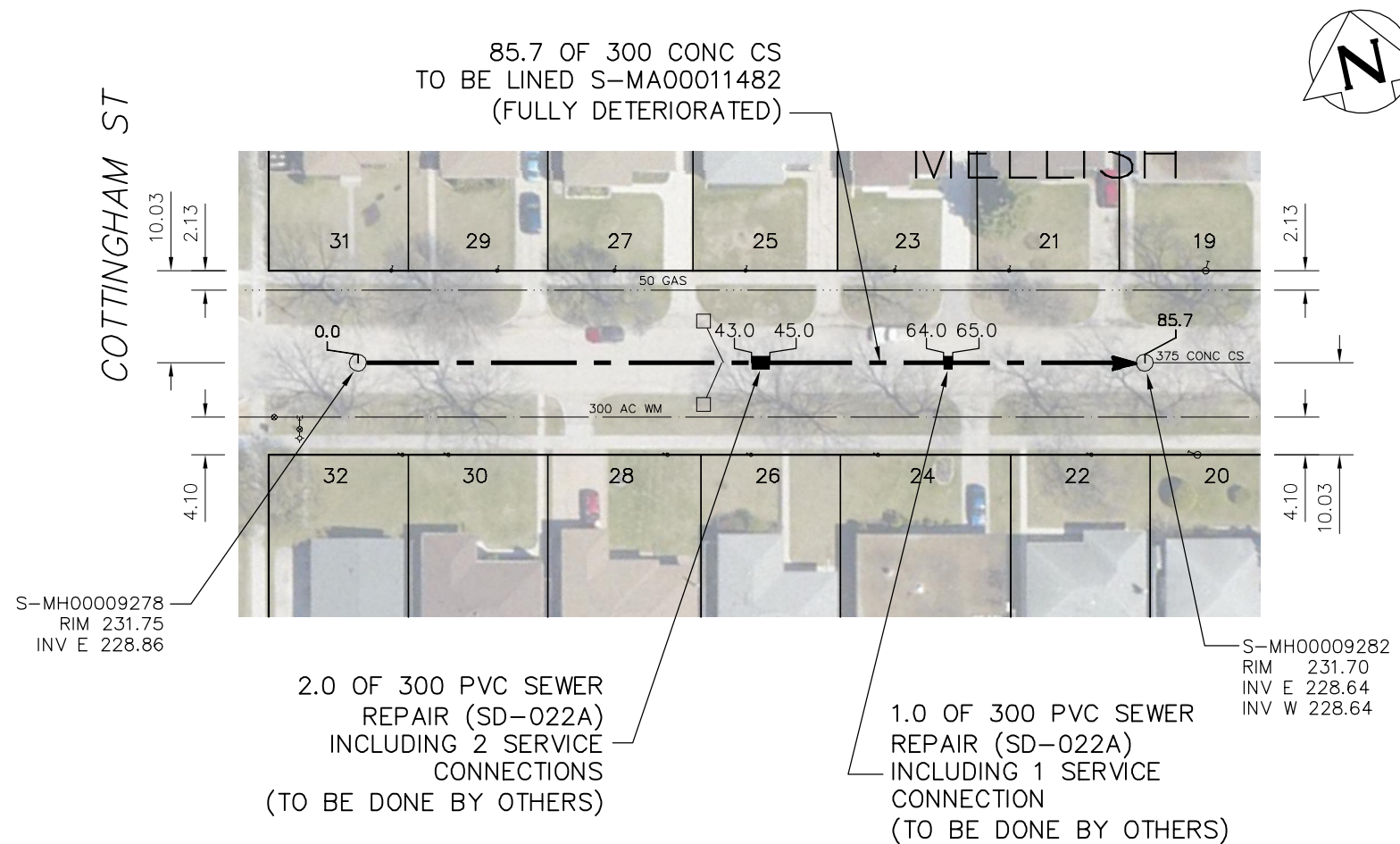


# MELLISH AVENUE



SEWER JUNCTION INFORMATION FROM SEWER VIDEO INSPECTION		
SEWER ID S-MA00011482		
DISTANCE FROM MH ID S-MH00009278		
DISTANCE	DIAMETER	CLOCK
1.7	150	2
2.2	150	12
6.0	150	10
7.6	150	2
10.8	150	2
17.5	150	10
29.3	150	10
35.4	150	2
37.7	150	1
38.6	150	10
41.7	150	10
43.0	150	2
44.2	150	10
62.0	150	2
64.3	150	10
79.1	150	10
83.7	150	2

## WARNING

IF POWER EQUIPMENT OR EXPLOSIVES ARE TO BE USED FOR EXCAVATION ON THIS PROJECT THE CONTRACTOR MUST:

- 1) NOTIFY THE GAS COMPANY OF THE PROPOSED LOCATION OF EXCAVATION.
- 2) TAKE PRECAUTION TO AVOID DAMAGE TO GAS COMPANY INSTALLATIONS.

SEE PROVINCIAL REGULATION 210/72 FOR DETAILS

**METRIC**  
WHOLE NUMBERS INDICATE MILLIMETRES  
DECIMALIZED NUMBERS INDICATE METRES



<b>LOCATION APPROVED UNDERGROUND STRUCTURES</b>  SUPV. U/G STRUCTURES COMMITTEE _____ DATE _____  NOTE: LOCATION OF UNDERGROUND STRUCTURES AS SHOWN ARE BASED ON THE BEST INFORMATION AVAILABLE BUT NO GUARANTEE IS GIVEN THAT ALL EXISTING UTILITIES ARE SHOWN OR THAT THE GIVEN LOCATIONS ARE EXACT. CONFIRMATION OF EXISTENCE AND EXACT LOCATION OF ALL SERVICES MUST BE OBTAINED FROM THE INDIVIDUAL UTILITIES BEFORE PROCEEDING WITH CONSTRUCTION.	B.M. ELEV. _____ CONSTRUCTION COMPLETION DATE: YYYY MM DD _____			ENGINEER'S SEAL  ORIGINAL SIGNED BY S.R.J. COURNOYER 12-11-28		 <b>THE CITY OF WINNIPEG</b> WATER AND WASTE DEPARTMENT ENGINEERING DIVISION  2013 SEWER RENEWALS BY CIPP LINING <b>MELLISH AVENUE</b> 1ST MH E OF COTTINGHAM STREET TO 2ND MH E OF COTTINGHAM STREET	SHEET 32 OF 46
	DESIGNED BY <b>SC</b> CHECKED BY <b>SC</b> DRAWN BY <b>RS</b> APPROVED BY <b>KZ</b> SCALE: HORIZONTAL <b>1:750</b> VERTICAL _____ RELEASED FOR CONSTRUCTION _____		CONSULTANT DRAWING NUMBER _____		CITY DRAWING NUMBER <b>10652</b>		
NO. _____ REVISIONS _____ DATE _____ BY _____		DATE <b>2013 12 10</b> PLOT DATE: 2013 12 10		BID OPPORTUNITY: 965-2013 CONTRACT NUMBER: 13		FILE PATH: R:\DRAWINGS\SEWER\2013_RENEWALS\CIPP'S\CONTRACT 13\CIPP's\MELLISH_COTTINGHAM.dwg	