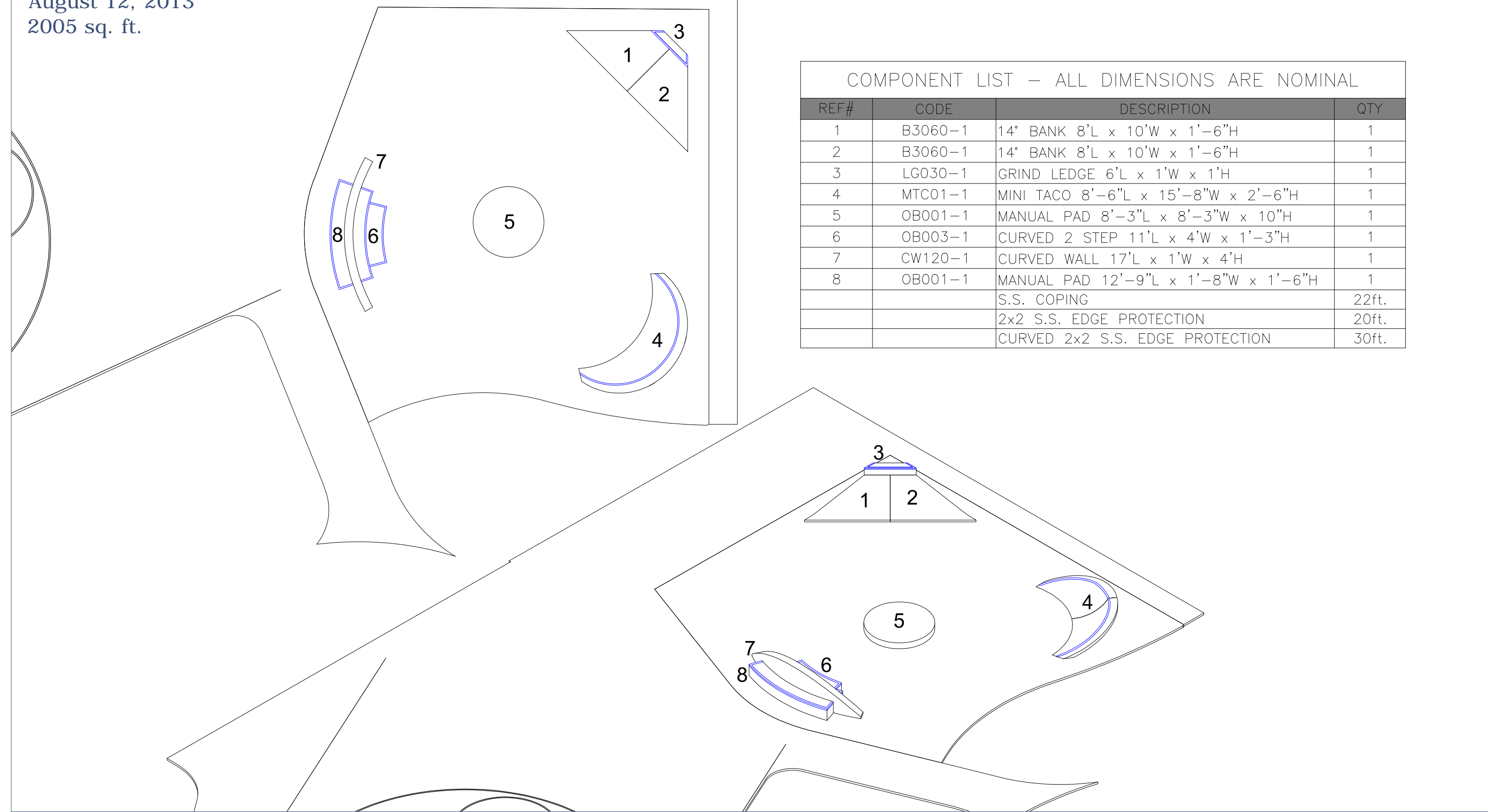


August 12, 2013
2005 sq. ft.



COMPONENT LIST - ALL DIMENSIONS ARE NOMINAL

REF #	CODE	DESCRIPTION	QTY
1	B3060-1	14" BANK 8'L x 10'W x 1'-6"H	1
2	B3060-1	14" BANK 8'L x 10'W x 1'-6"H	1
3	LG030-1	GRIND LEDGE 6'L x 1'W x 1'H	1
4	MTC01-1	MINI TACO 8'-6"L x 15'-8"W x 2'-6"H	1
5	OBO01-1	MANUAL PAD 8'-3"L x 8'-3"W x 10"H	1
6	OBO03-1	CURVED 2 STEP 11'L x 4'W x 1'-3"H	1
7	CW120-1	CURVED WALL 17'L x 1'W x 4'H	1
8	OBO01-1	MANUAL PAD 12'-9"L x 1'-8"W x 1'-6"H	1
		S.S. COPING	22ft.
		2x2 S.S. EDGE PROTECTION	20ft.
		CURVED 2x2 S.S. EDGE PROTECTION	30ft.

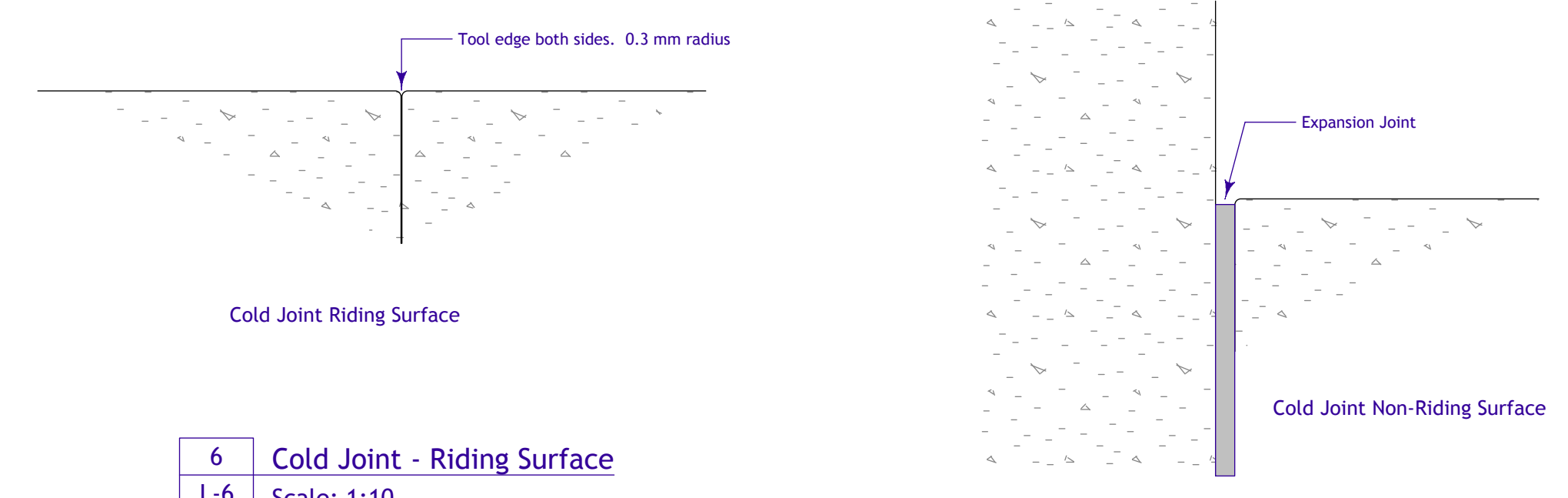
Eldon Ross Skate Park - Winnipeg, MB

Copyright 2010 Barkman concrete Ltd. All rights reserved. Any duplication or reproduction is strictly prohibited

barkman
Barkman Concrete Limited
152 Brandt Street, Steinbach, MB R5G 0R2
T (204) 326 3445 or 1 800 461 2278 F (204) 326 5195
barkmanskateparks.com



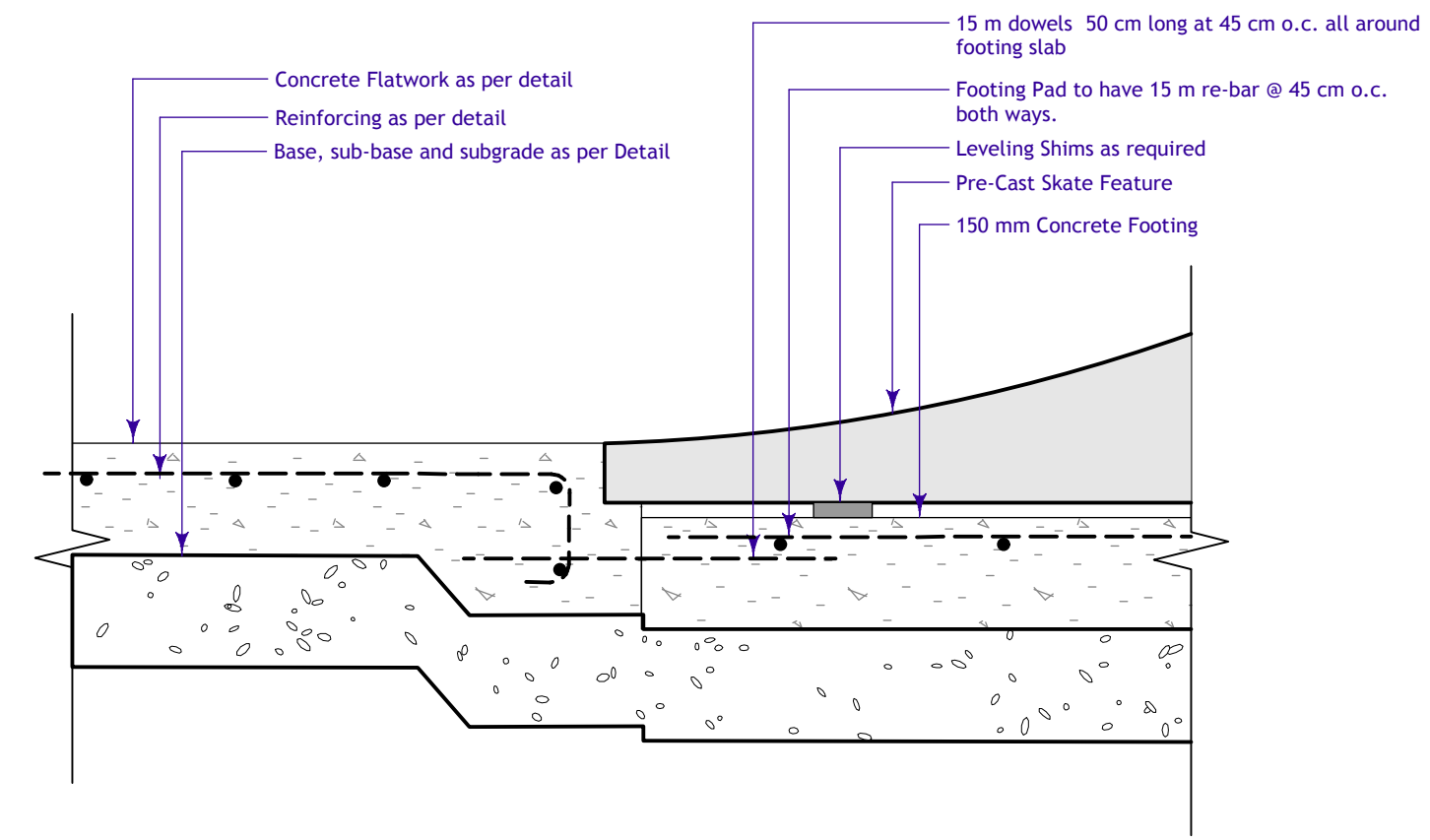
- General Notes**
- All existing trees, sidewalks, curbs, catch basins, culverts, survey markers, to remain are to be protected during construction. Any damage to them is to be made good by the Contractor. Maintain positive drainage into all catch basins and curb inlets.
 - All work is to be warranted for a period of not less than 1 year.
 - Contractor is to limit operations to the area within the area of work shown on the drawing. Should areas outside of this limit be damaged during the course of construction, Contractor is to make good the damage at his own expense.
 - Contractor is to obtain location of all utilities prior to construction. If using power equipment to excavate contractor must notify Hydro and Gas and telephone utilities and take steps to avoid damaging their installations.
 - All dimensions are in meters unless otherwise noted.
 - Contractor to confirm all dimensions and report any discrepancies to Contract Administrator prior to construction.
 - Layout is to be approved by Contract Administrator prior to any construction or demolition/removals.



6 Cold Joint - Riding Surface
L-6 Scale: 1:10

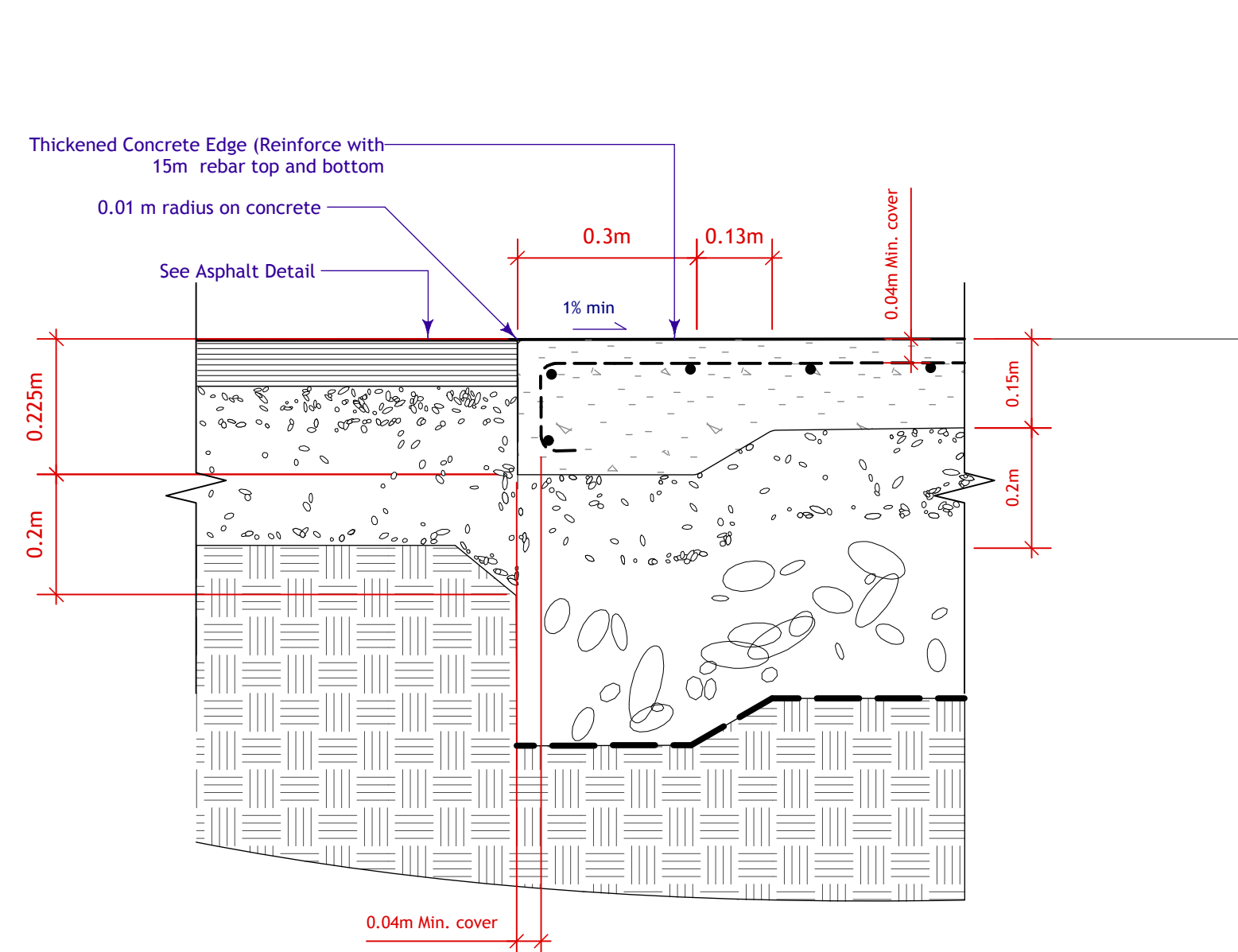
7 Cold Joint - Expansion Joint
L-6 Scale: 1:10

- Concrete Notes**
- Contractor to provide shop drawings showing all precast fixtures c.w. foundation pads and connection to flatwork slab as well as other fixtures and mounting details (eg rails).
 - Concrete to be 32 mpa at 28 days
 - Maximum agg. size 19 mm
 - Air Entraining 6-9%
 - All reinforcing steel to be epoxy coated
 - Exposure Class F1
 - Contractor to provide density testing of the sub-base and the granular base course. Results of testing to be sent directly from the testing lab to the Contract Administrator.
 - Contractor to provide concrete testing as per CW Standard Specification

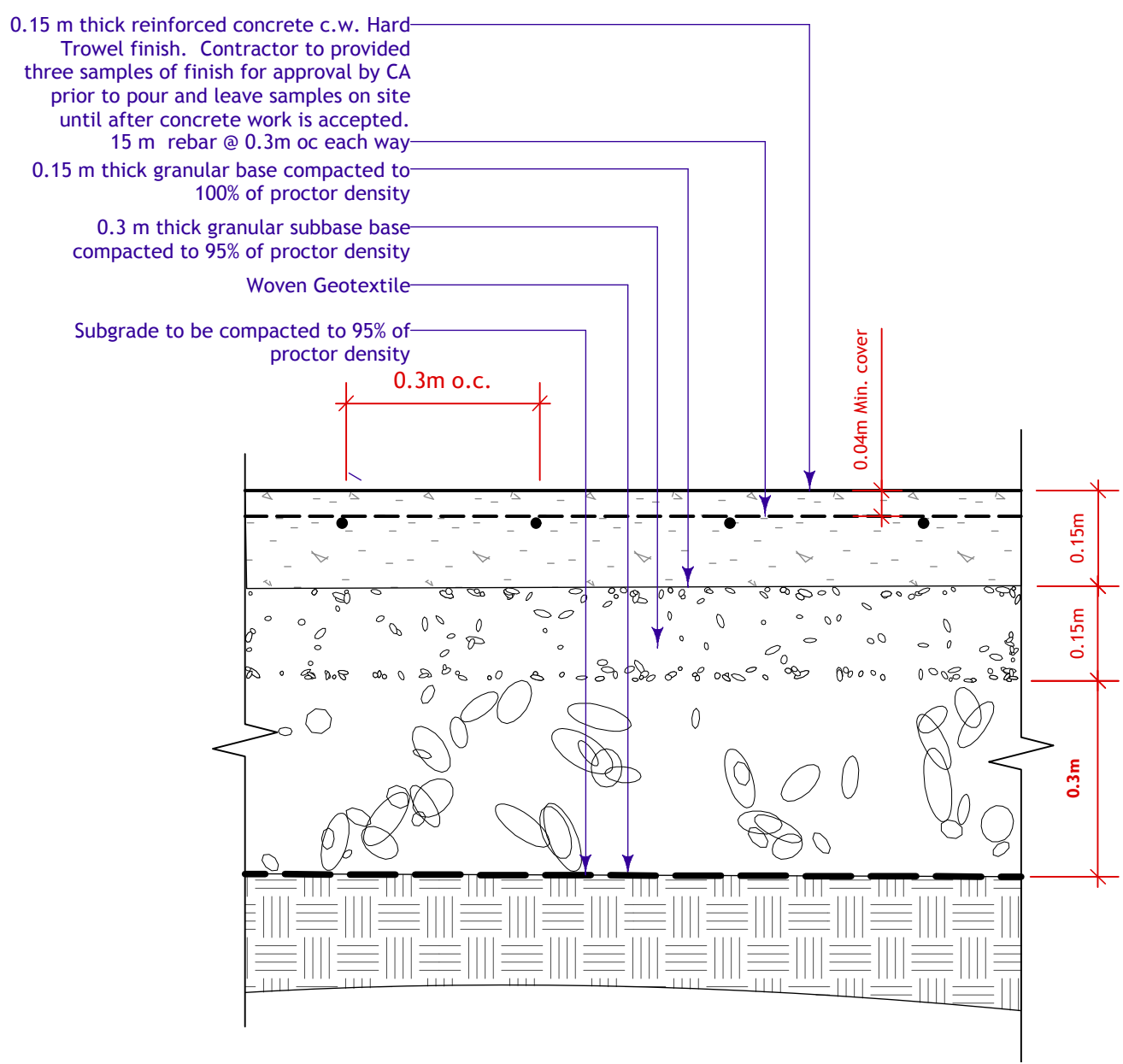


3 Connection - Skate Feature to Flat Work
L-6 Scale: 1:10

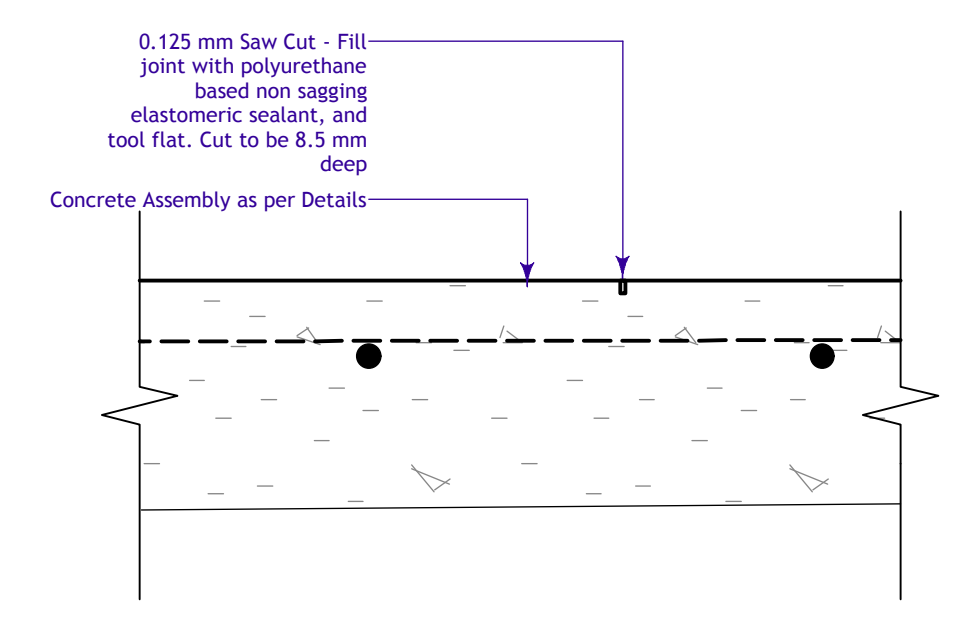
- This drawing shall not be used for construction unless signed and sealed by Landscape Architect.
- Variations and modifications to the work shown will not be allowed without prior written consent of Landscape Architect.
- Drawing and Specifications, as instruments of service, are the property of the Landscape Architect. The copyright is reserved in the name of the Landscape Architect. No reproduction may be made without the prior written consent of the Landscape Architect.
- Contractors/bidders are hereby granted a limited licence to reproduce these drawings for the purposes of bidding. Such reproductions are not to be used for construction.



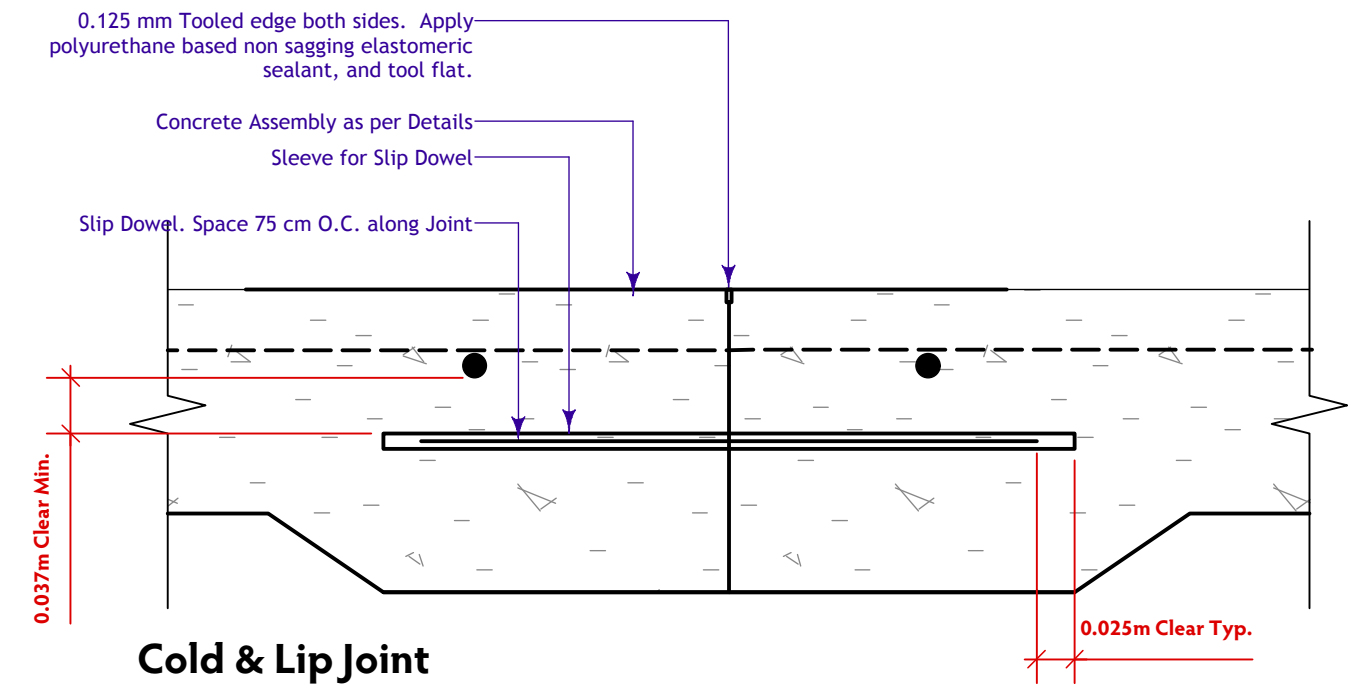
1 Skate Flat Work - Thickened Edge
L-6 Scale: 1:10



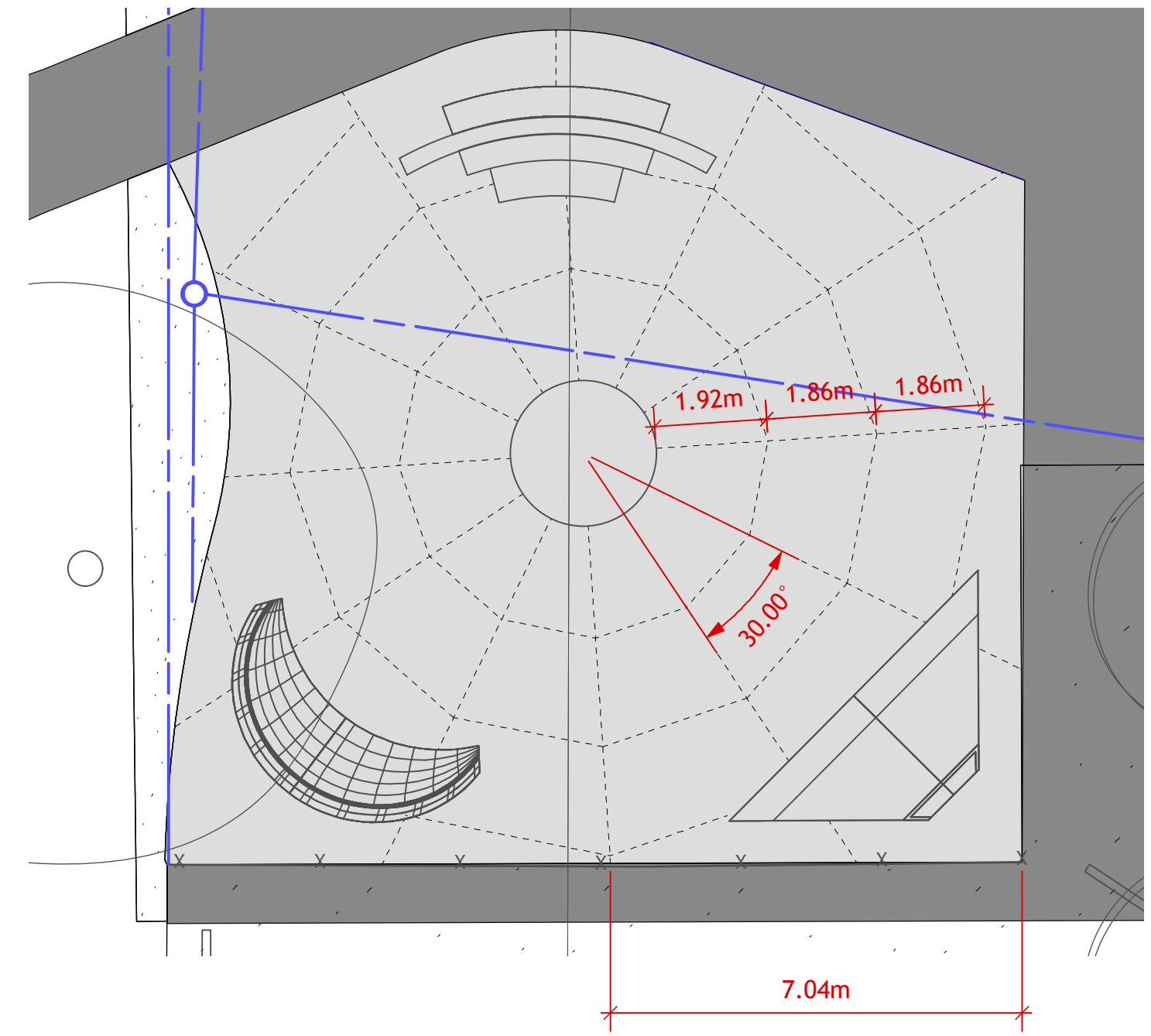
2 Concrete Flat Work
L-6 Scale: 1:10



4 Concrete Sawcut
L-6 Scale: 1:5



5 Concrete Cold & Lip Joint
L-6 Scale: 1:5



8 Saw Cut Layout
L-6 Scale: 1:100

No.	Date	Issue Notes
B	11/17/13	For Bid Opp
A	8/22/13	For Pre Bid Opp Review

Consultant

Project Title
**Eldon Ross & Pacific Dee
Skate Spot and Basketball Half Court**

Drawing Title
Skate Drawings