

1 SITE PLAN - SCOPE OF WORK
1 : 250

SCOPE OF WORK - PHASE 1 NORTH STRUCTURE (WESTBOUND LANES)		
ITEM	DESCRIPTION	SHEET No.
1	DETOUR TRAFFIC TO SOUTH STRUCTURE	3
2	REMOVE EXISTING BRIDGE BARRIER, PEDESTRIAN HANDRAIL AND TOP PORTION OF BRIDGE SIDEWALK CONCRETE	7 & 8
3	REMOVE PORTION OF EXISTING BRIDGE MEDIAN BARRIER	7 & 8
4	REMOVE EXISTING APPROACH SLAB AND ROADWAY SLAB	7 & 8
5	REMOVE EXISTING EXPANSION JOINTS	7 & 8
6	REMOVE EXISTING ABUTMENT BACKWALLS AND REPAIR DAMAGED GIRDERS	9 TO 12
7	CONSTRUCT CONCRETE ABUTMENT BACKWALL	13 & 14
8	CONSTRUCT BRIDGE SIDEWALK OVERLAY, CONCRETE BARRIER AND INSTALL ALUMINUM PEDESTRIAN HANDRAIL	15 TO 16, 26 TO 29
9	CONSTRUCT BRIDGE MEDIAN BARRIER	15 & 16
10	CONSTRUCT APPROACH SLAB, ROADWAY SLAB AND EXPANSION ROADWAY SLAB	19 TO 25
11	INSTALL MODULAR EXPANSION JOINT AND SEALS	30 TO 35
12	COMPLETE MISCELLANEOUS DECK REPAIRS, APPLY HEALER/SEALER TO BRIDGE DECK	15
13	RELOCATE UTILITIES AND SUB-PHASE WORKS (BY OTHERS)	41

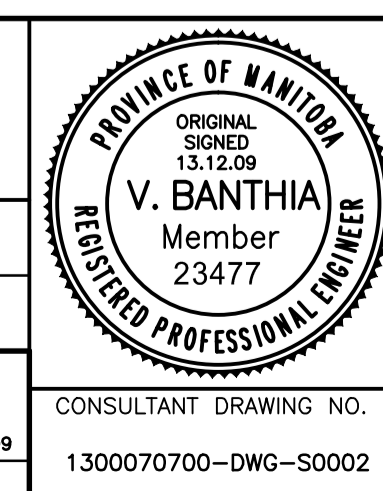
SCOPE OF WORK - PHASE 2 SOUTH STRUCTURE (EASTBOUND LANES)		
ITEM	DESCRIPTION	SHEET No.
14	DETOUR TRAFFIC TO NORTH STRUCTURE	4
15	REMOVE EXISTING BRIDGE BARRIER, PEDESTRIAN HANDRAIL AND TOP PORTION OF BRIDGE SIDEWALK CONCRETE	36 & 37
16	REMOVE PORTION OF EXISTING BRIDGE MEDIAN BARRIER	36 & 37
17	REMOVE EXISTING APPROACH SLAB AND ROADWAY SLAB	36 & 37
18	REMOVE EXISTING EXPANSION JOINTS	36 & 37
19	REMOVE EXISTING ABUTMENT BACKWALLS AND REPAIR DAMAGED GIRDERS	38 TO 40
20	CONSTRUCT CONCRETE ABUTMENT BACKWALL	42 TO 44
21	CONSTRUCT BRIDGE SIDEWALK OVERLAY, CONCRETE BARRIER AND INSTALL ALUMINUM PEDESTRIAN HANDRAIL	45 TO 47, 55, 27 TO 29
22	CONSTRUCT BRIDGE MEDIAN BARRIER AND INSTALL LONGITUDINAL JOINT	45, 46 & 57
23	CONSTRUCT APPROACH SLAB, ROADWAY SLAB AND EXPANSION ROADWAY SLAB	48 TO 54
24	INSTALL MODULAR EXPANSION JOINT AND SEALS	56 TO 61
25	COMPLETE MISCELLANEOUS DECK REPAIRS, APPLY HEALER/SEALER TO BRIDGE DECK	15 & 45
26	REPAIR AND PAINT THE END POST MONUMENTS AND PIERS	SEE SPECIFICATIONS
27	REPLACE UNDERBRIDGE LIGHTING	68
28	REPAIR GROUTED RIPRAP	SEE SPECIFICATIONS
29	MISCELLANEOUS ROADWORKS	66 & 67, 69 & 70

NOTE:
THESE DRAWINGS ARE TO BE READ IN CONJUNCTION WITH THE CONTRACT SPECIFICATIONS.



B.M. ELEV.	F.B.	DATE	BY
		13.12.09	V.B.
		13.07.18	

TETRA TECH	
DESIGNED BY: D.M.	CHECKED BY: V.B.
DRAWN BY: G.I./B.M.	APPROVED BY: E.F.S.
HOR. SCALE: AS NOTED	RELEASED FOR CONSTRUCTION DATE: 13.12.09
VERTICAL: AS NOTED	ORIGINAL SIGNED: 13.12.09
CONSULTANT DRAWING NO. 1300070700-DWG-S0002	



THE CITY OF WINNIPEG PUBLIC WORKS DEPARTMENT ENGINEERING DIVISION	
PORTAGE AVENUE TWIN BRIDGES OVER STURGEON CREEK REHABILITATION AND RELATED WORKS SITE PLAN AND SCOPE OF WORK	CITY DRAWING NUMBER B178-14-002 SHEET 2 OF 70
2	