

1 PLAN - PHASE 1 REMOVALS
1 : 125

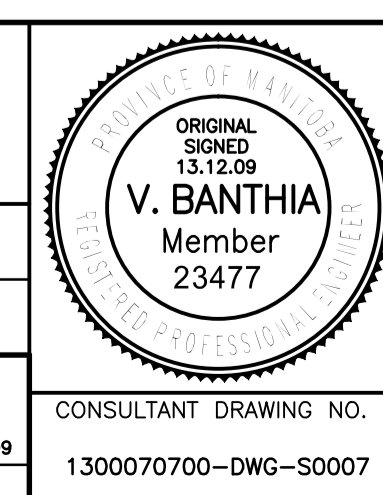
- LEGEND:**
- PARTIAL DEPTH REMOVALS
 - FULL DEPTH REMOVALS
 - MTS DUCTS
 - HYDRO DUCTS
 - GAS LINE

NOTE:
CONTRACTOR MUST VERIFY ALL EXISTING UTILITIES PRIOR TO DEMOLITION, EXCAVATION OR CONSTRUCTION.



B.M. ELEV.	F.B.	DATE	BY
0	ISSUED FOR TENDER	13.12.09	V.B.
	NO. REVISIONS	DATE	BY

TETRA TECH	
DESIGNED BY: D.M.	CHECKED BY: V.B.
DRAWN BY: G.I./B.M.	APPROVED BY: E.F.S.
HOR. SCALE: AS NOTED	RELEASED FOR CONSTRUCTION DATE: 13.12.09
VERTICAL: AS NOTED	ORIGINAL SIGNED: 13.12.09
CONSULTANT DRAWING NO. 1300070700-DWG-S0007	



THE CITY OF WINNIPEG PUBLIC WORKS DEPARTMENT ENGINEERING DIVISION	
PORTAGE AVENUE TWIN BRIDGES OVER STURGEON CREEK REHABILITATION AND RELATED WORKS	
PHASE 1 REMOVALS NORTH STRUCTURE - PLAN	
CITY DRAWING NUMBER B178-14-007	SHEET 7 OF 70
7	