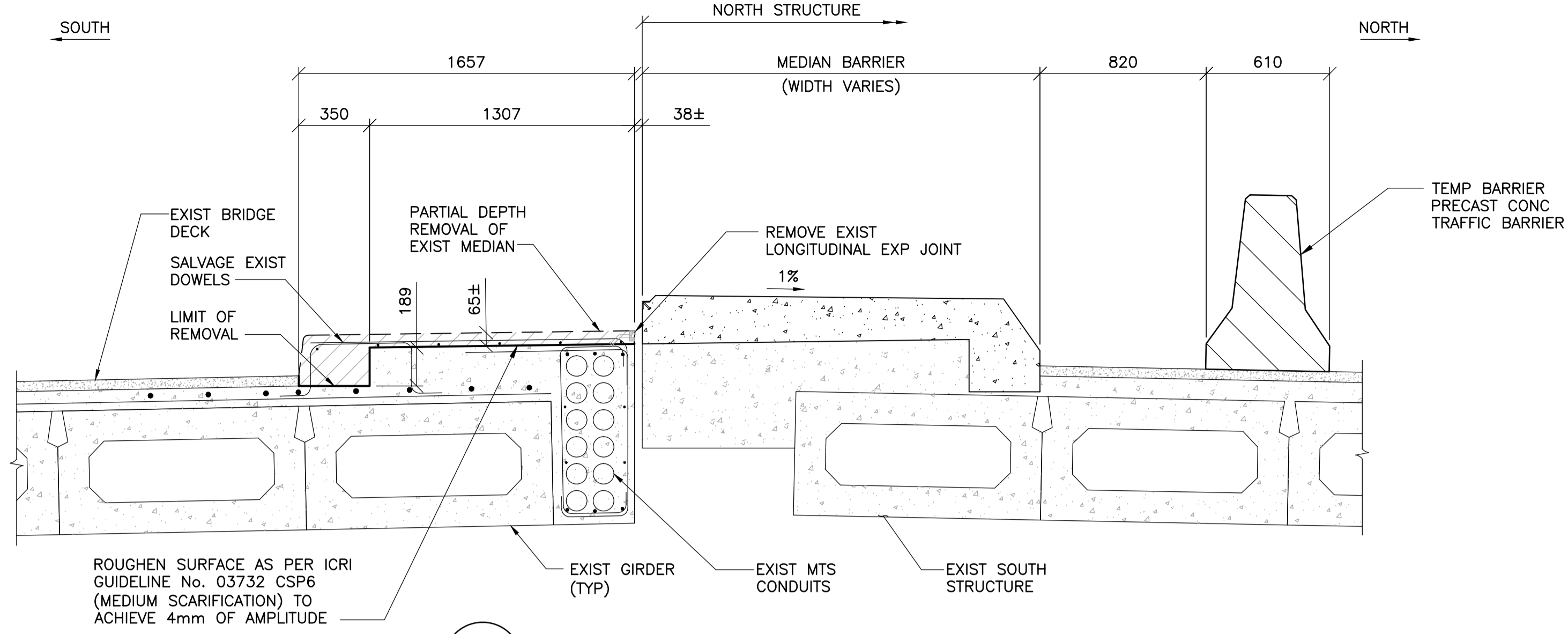
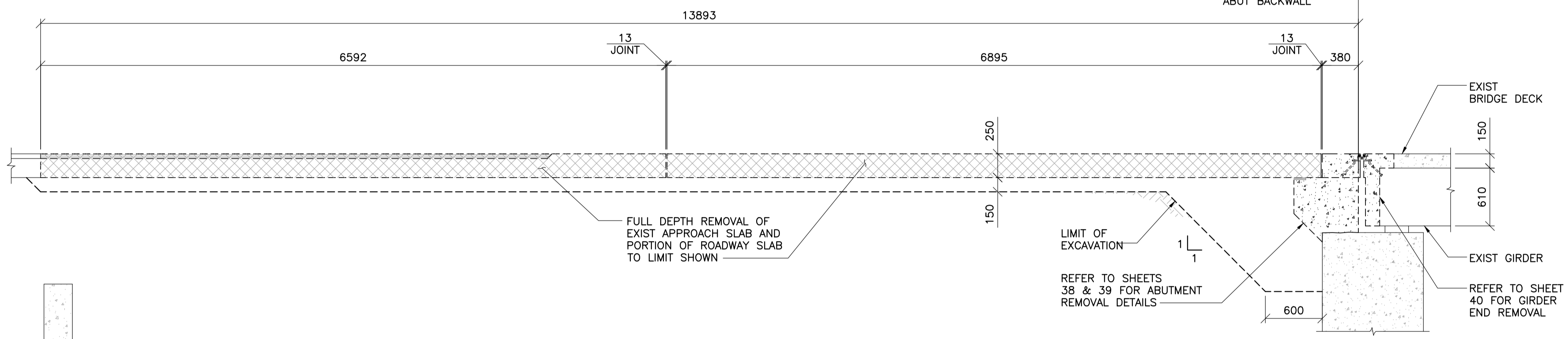


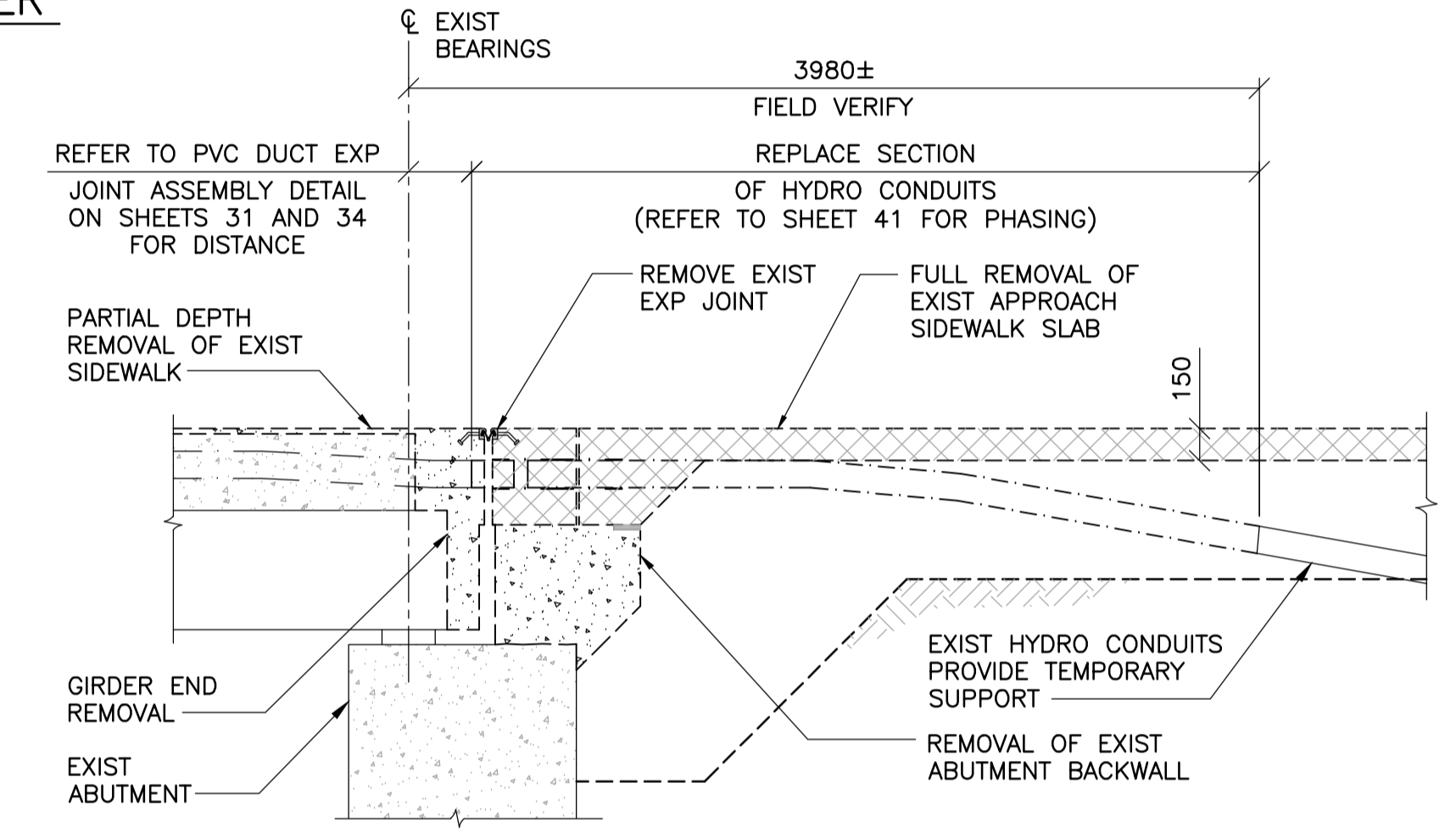
1 SECTION
36 37 1 : 20



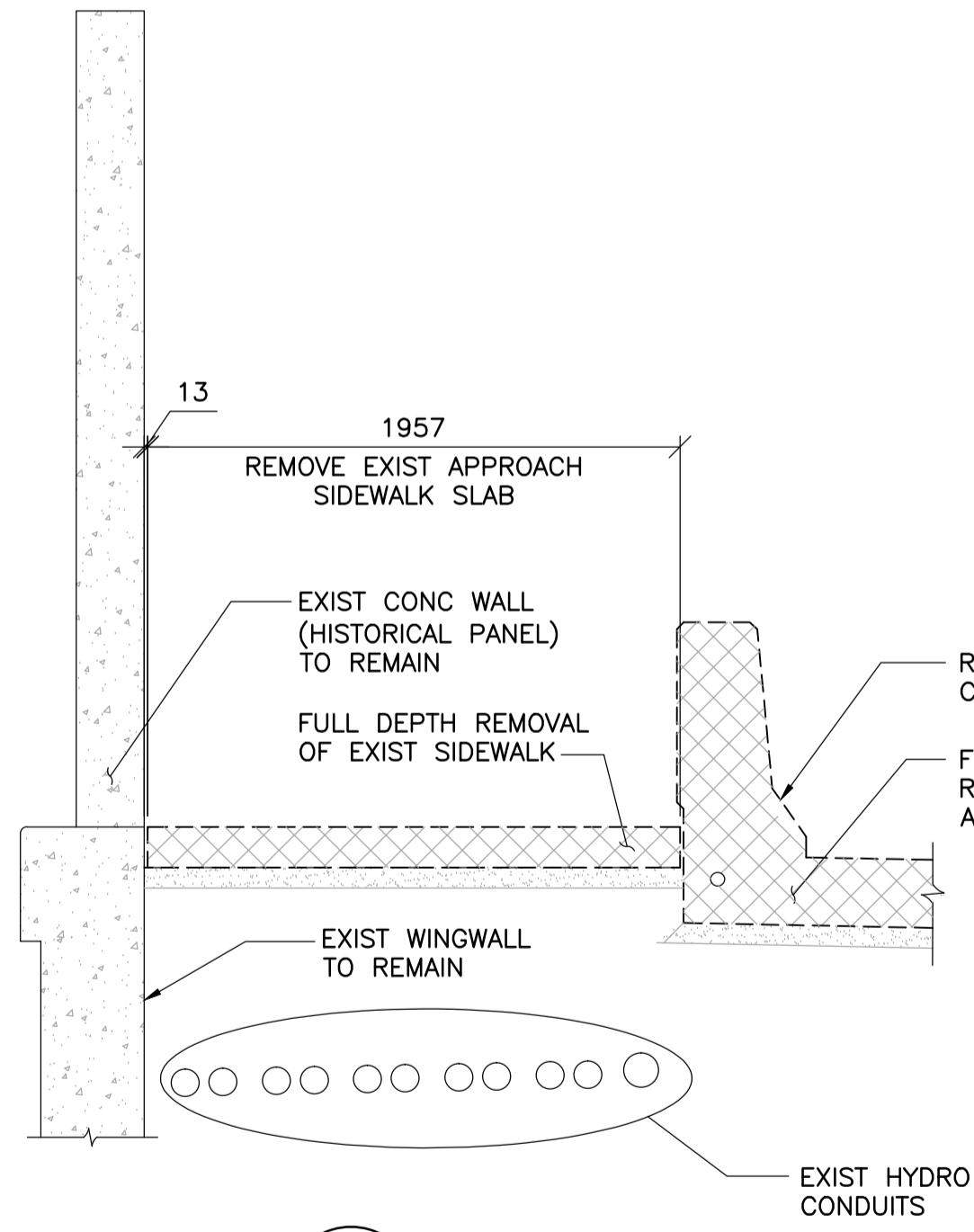
2 SECTION AT MEDIAN BARRIER
36 37 1 : 20



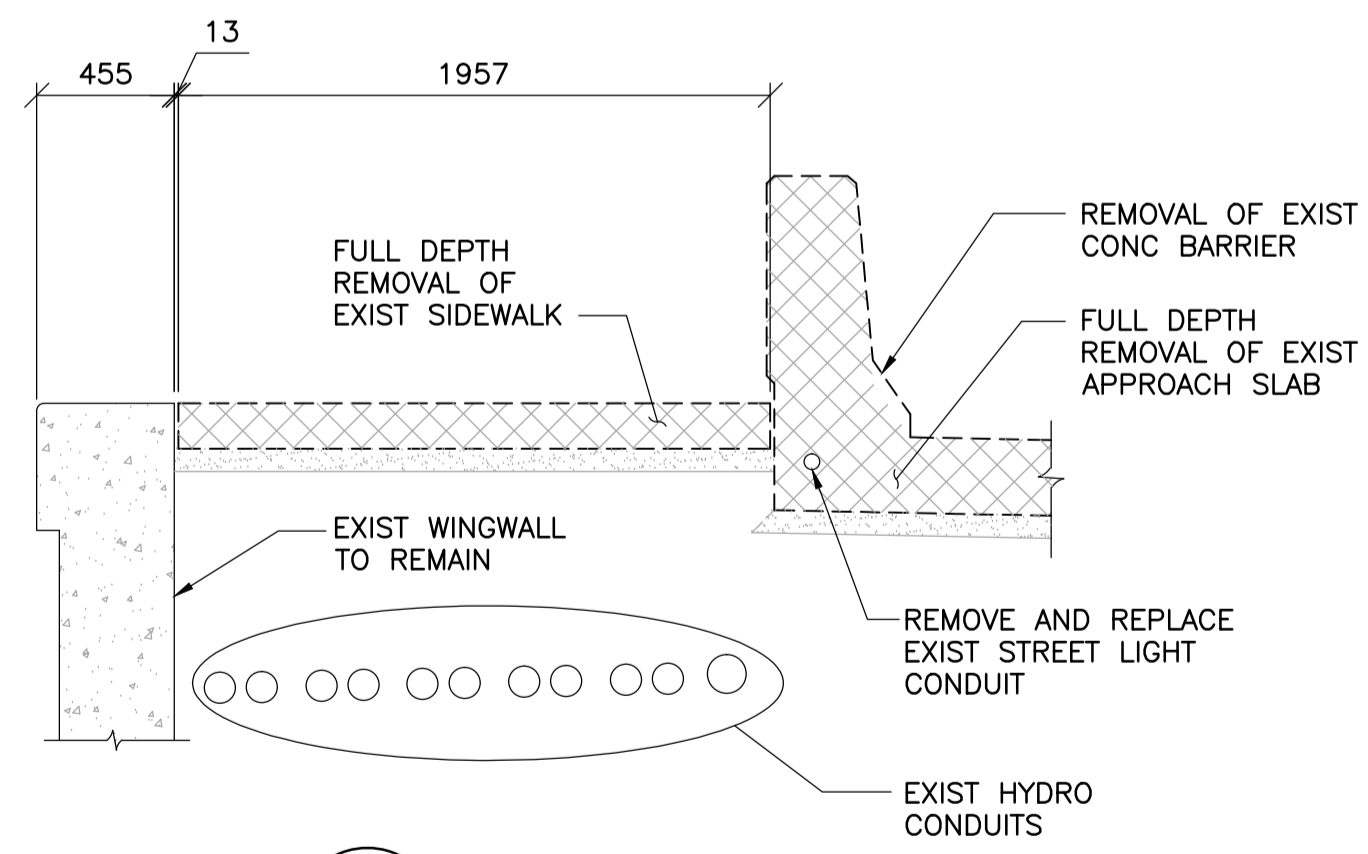
3 SECTION
36 37 1 : 30



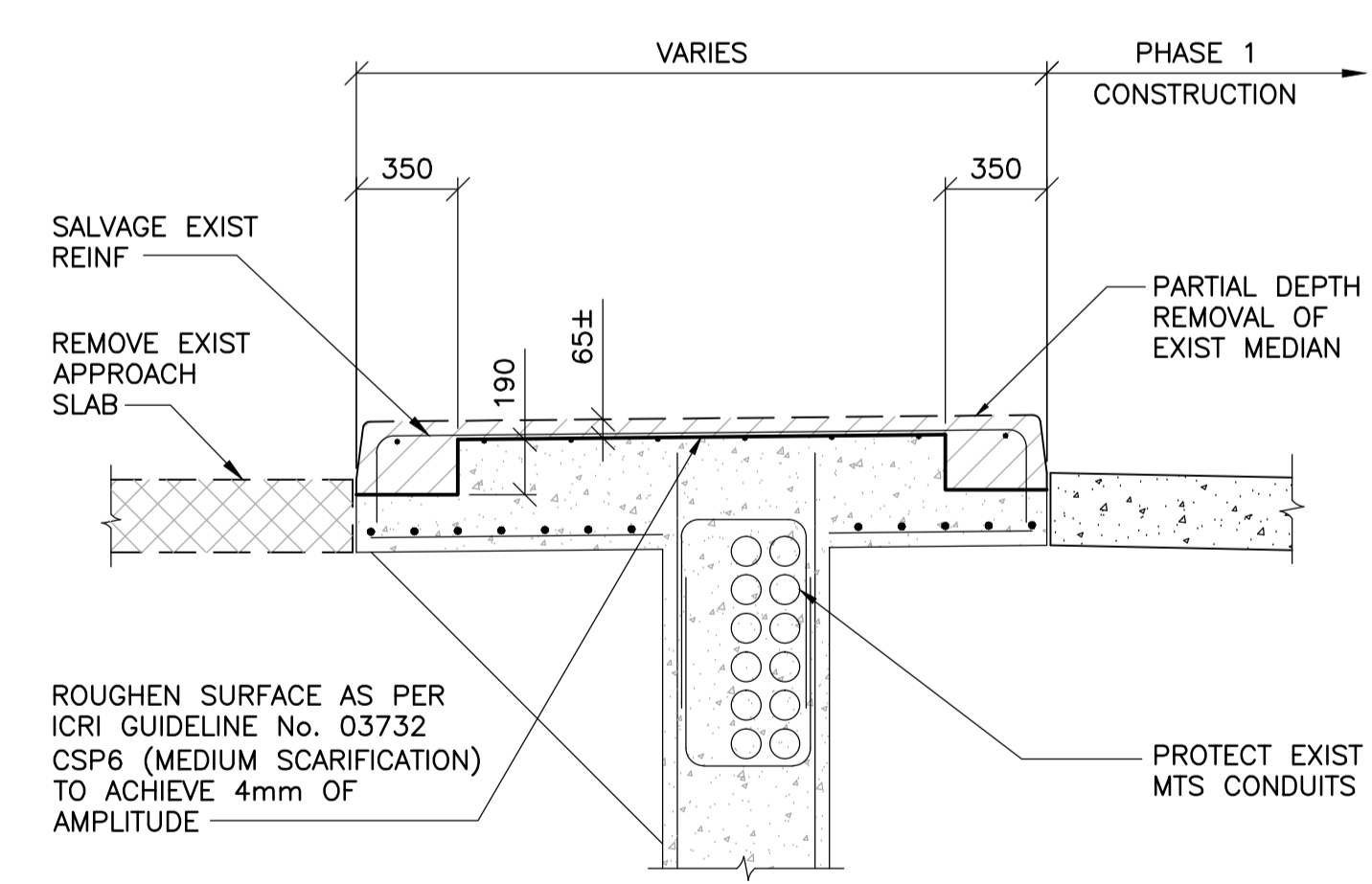
4 SECTION
36 37 1 : 30
- EXIST EAST ABUTMENT SHOWN, EXIST WEST ABUTMENT SIMILAR



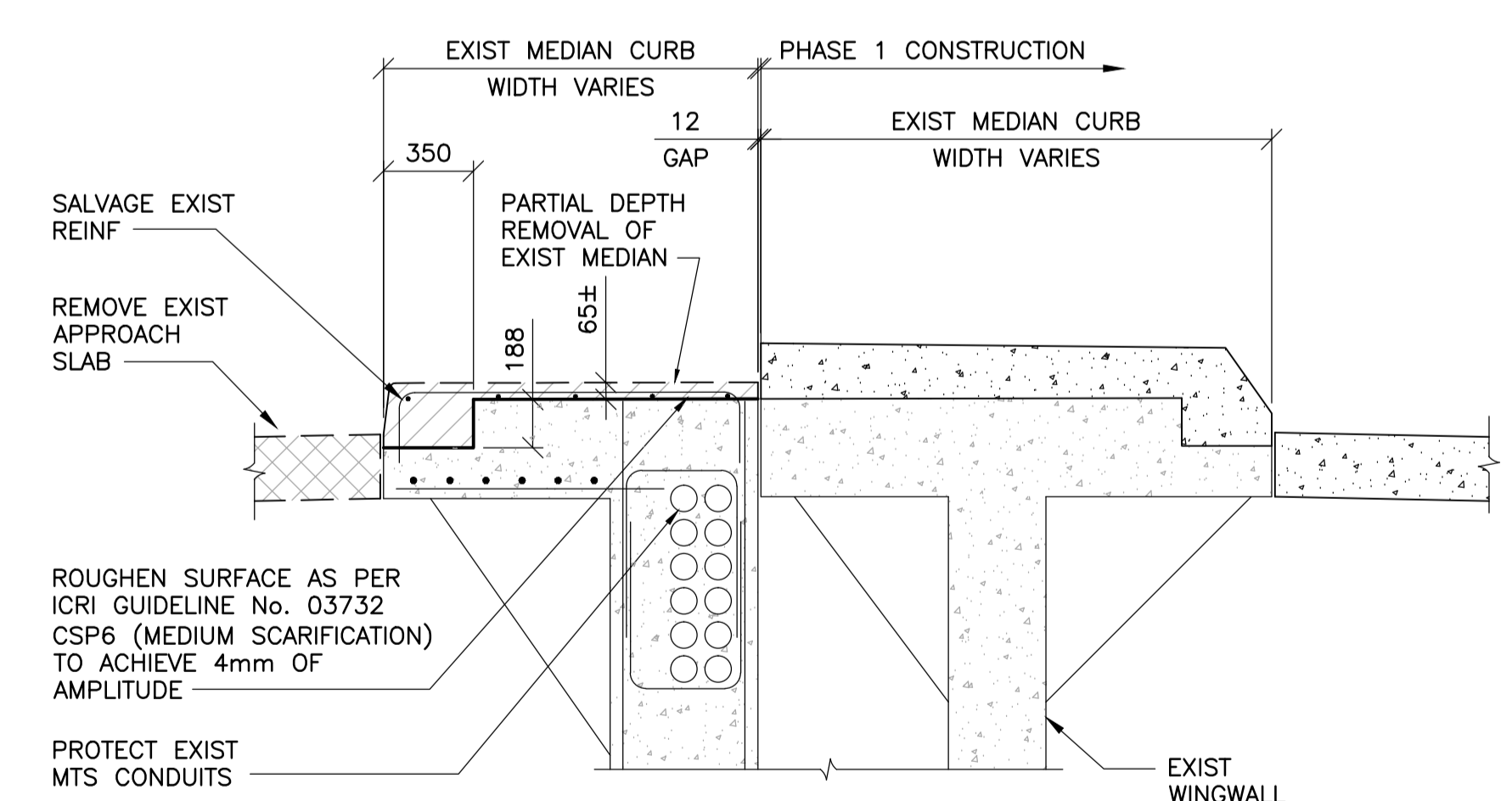
5 SECTION
36 37 1 : 25



6 SECTION
36 37 1 : 25



7 SECTION
36 37 1 : 25



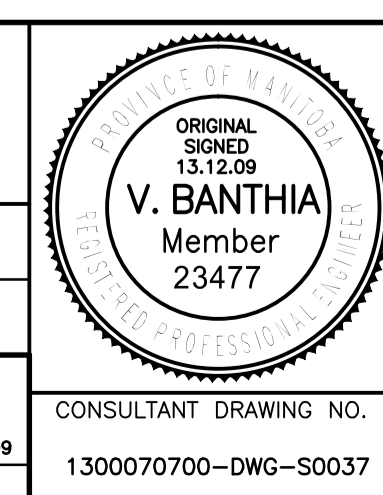
8 MEDIAN OVER WINGWALL - SECTION
36 37 1 : 25

- NOTES:**
1. PROTECT AND DO NOT DAMAGE EXISTING BOX GIRDER REINFORCING.
 2. DRAWINGS REPRESENT APPROXIMATE LOCATIONS OF UTILITY CONDUITS. REFER TO RECORD DRAWINGS AND UTILITY COMPANIES FOR CONFIRMATION AT EXACT LOCATION OF CONDUITS.
 3. REFER TO SHEET 41 FOR CONDUIT PHASING.
 4. CONTRACTOR TO VERIFY ALIGNMENT AND DEPTH OF CUTTING AND CONFIRM ANY NECESSARY ADJUSTMENTS TO SUIT ACTUAL CONDITIONS WITH THE ENGINEER PRIOR TO CUTTING CONCRETE.



B.M. ELEV.	F.B.	DATE	BY
		13.12.09	V.B.
		13.07.18	

TETRA TECH	
DESIGNED BY: D.M.	CHECKED BY: V.B.
DRAWN BY: B.M.	APPROVED BY: E.F.S.
HOR. SCALE: AS NOTED	RELEASED FOR CONSTRUCTION DATE: 13.12.09
VERTICAL: AS NOTED	ORIGINAL SIGNED: 13.12.09
0 ISSUED FOR TENDER	NO. REVISIONS



THE CITY OF WINNIPEG PUBLIC WORKS DEPARTMENT ENGINEERING DIVISION	
PORTAGE AVENUE TWIN BRIDGES OVER STURGEON CREEK REHABILITATION AND RELATED WORKS	CITY DRAWING NUMBER B178-14-037 SHEET 37 OF 70
PHASE 2 REMOVALS SECTIONS AND DETAILS	37