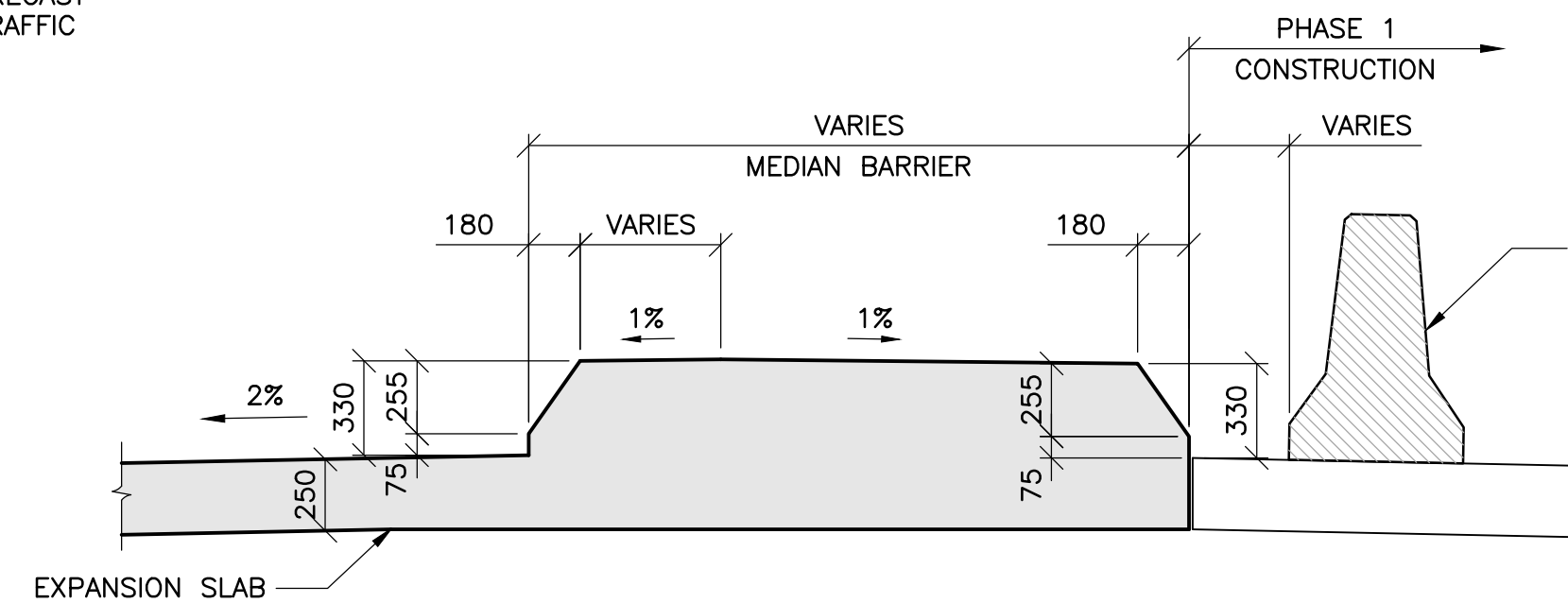
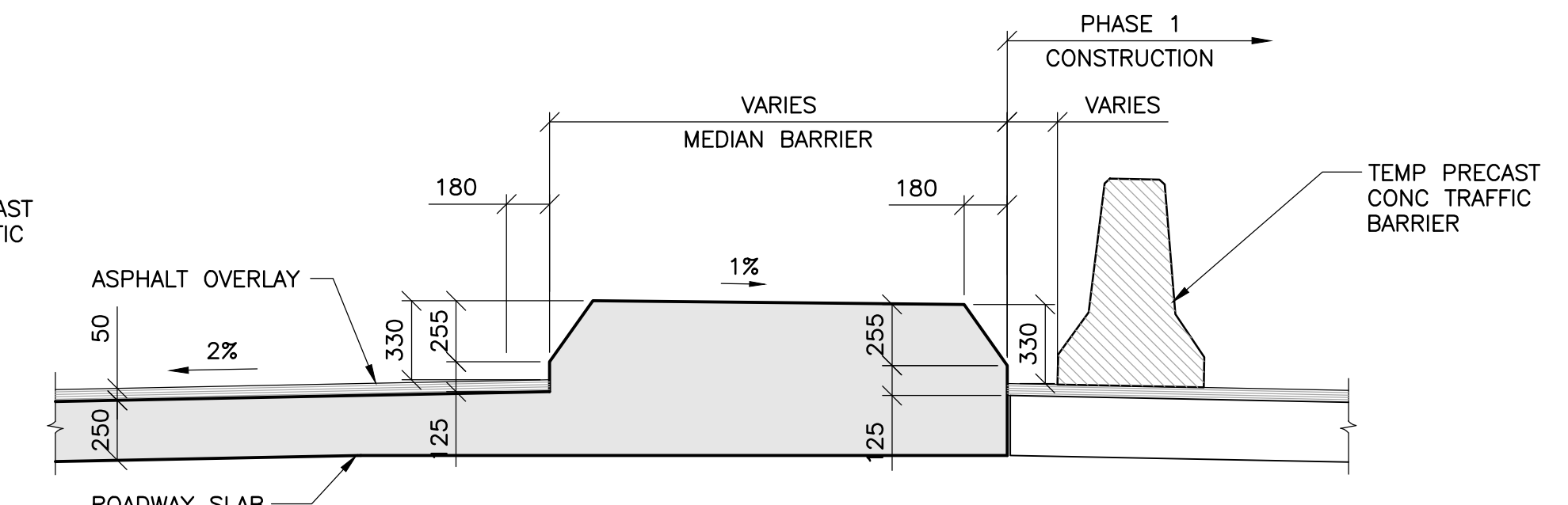


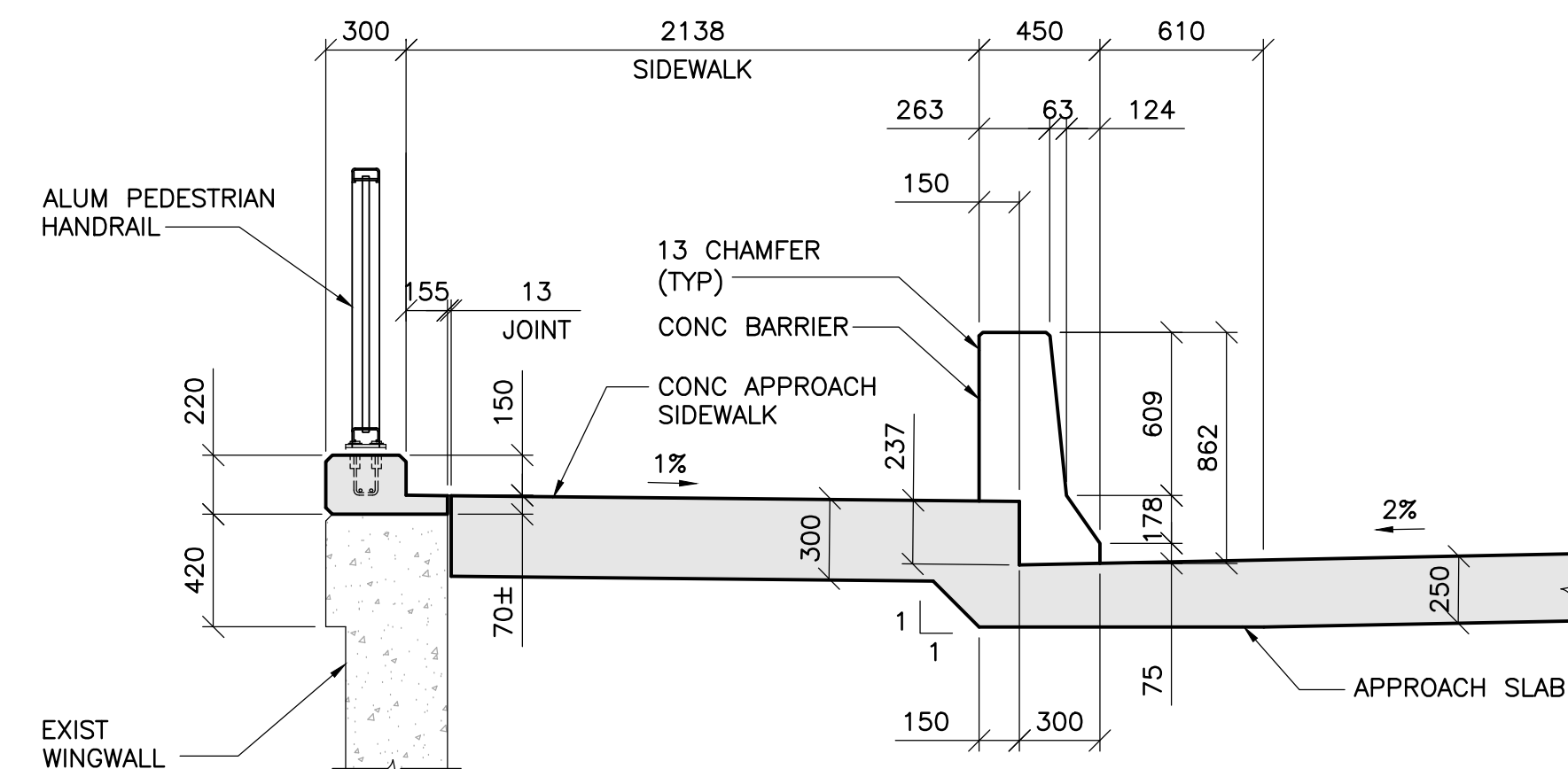
1 MEDIAN OVER WINGWALL - SECTION
48 50 1 : 25



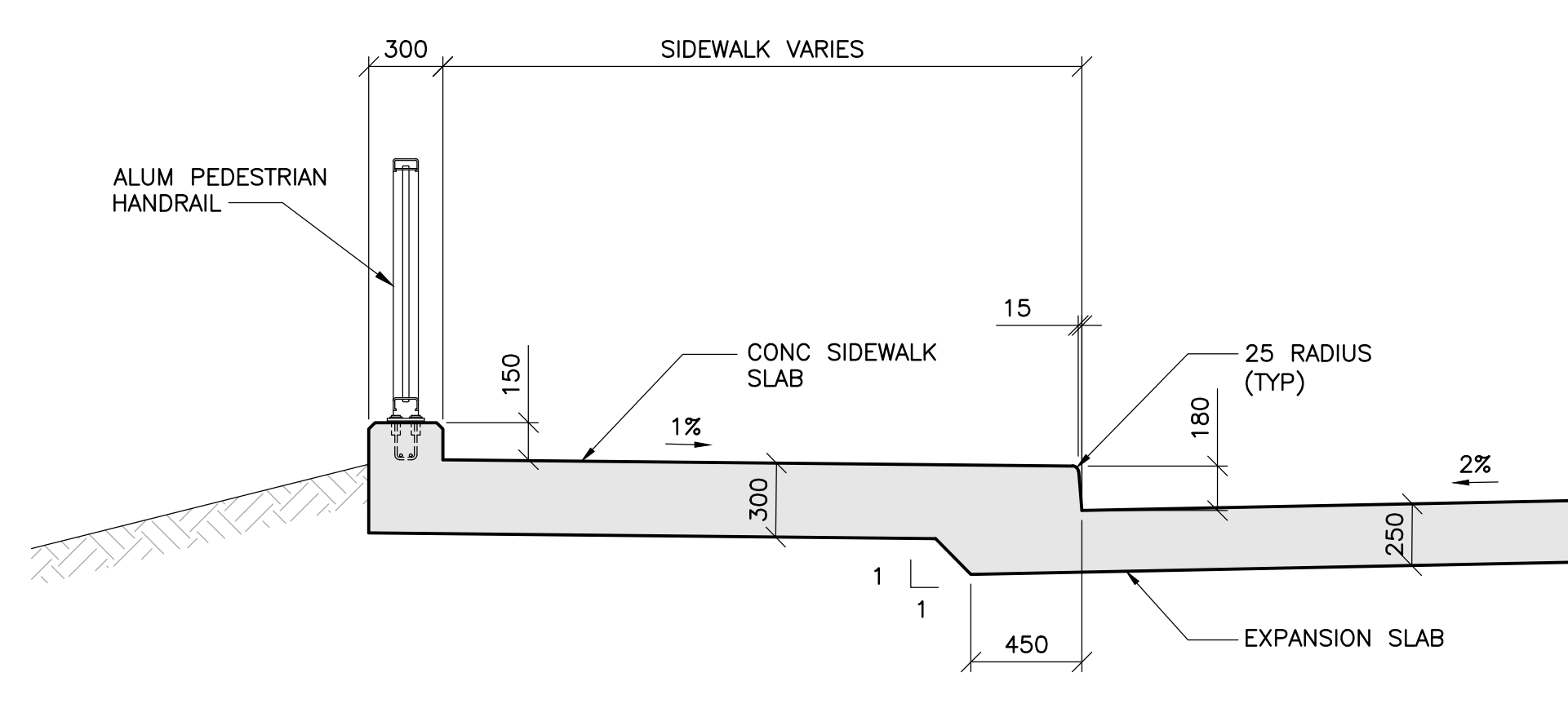
2 EXPANSION SLAB MEDIAN BARRIER - SECTION
48 50 1 : 25



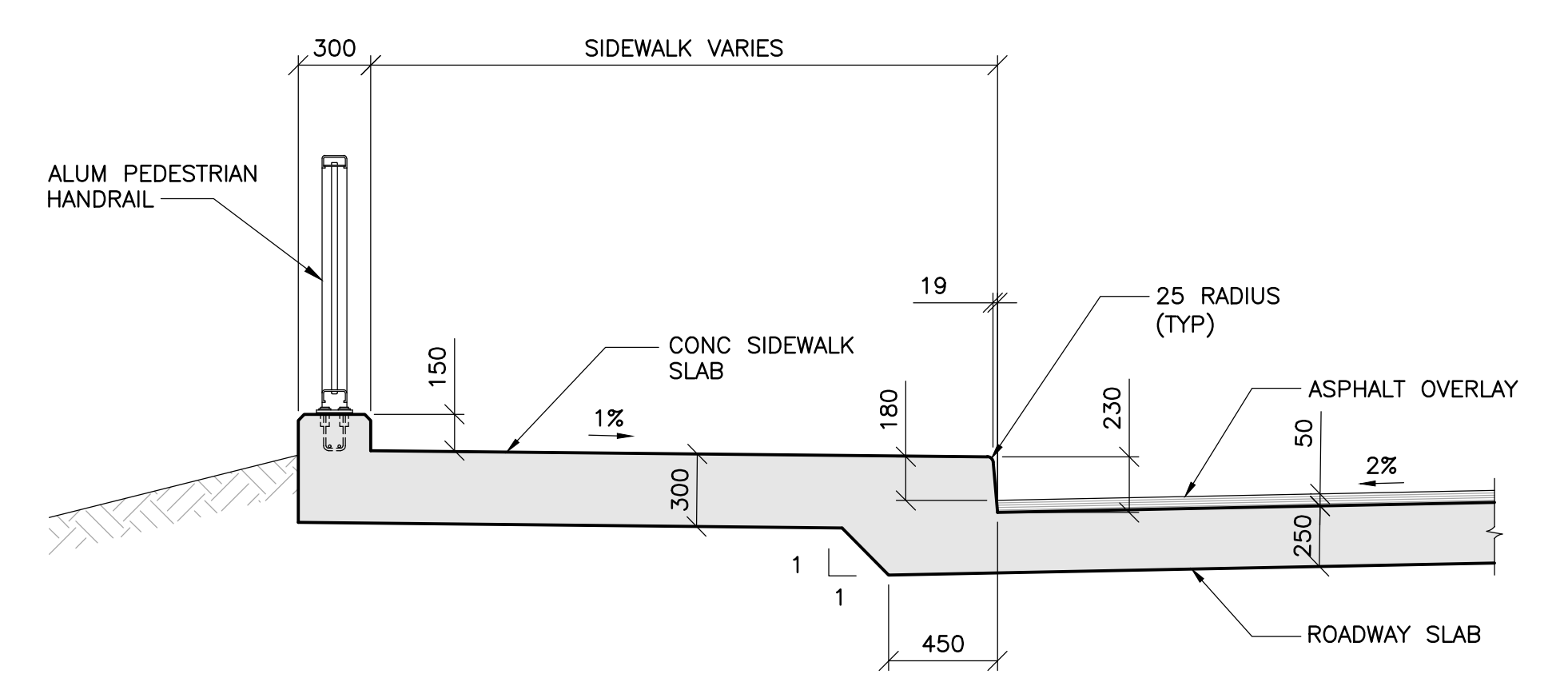
3 ROADWAY SLAB MEDIAN BARRIER - SECTION
48 50 1 : 25



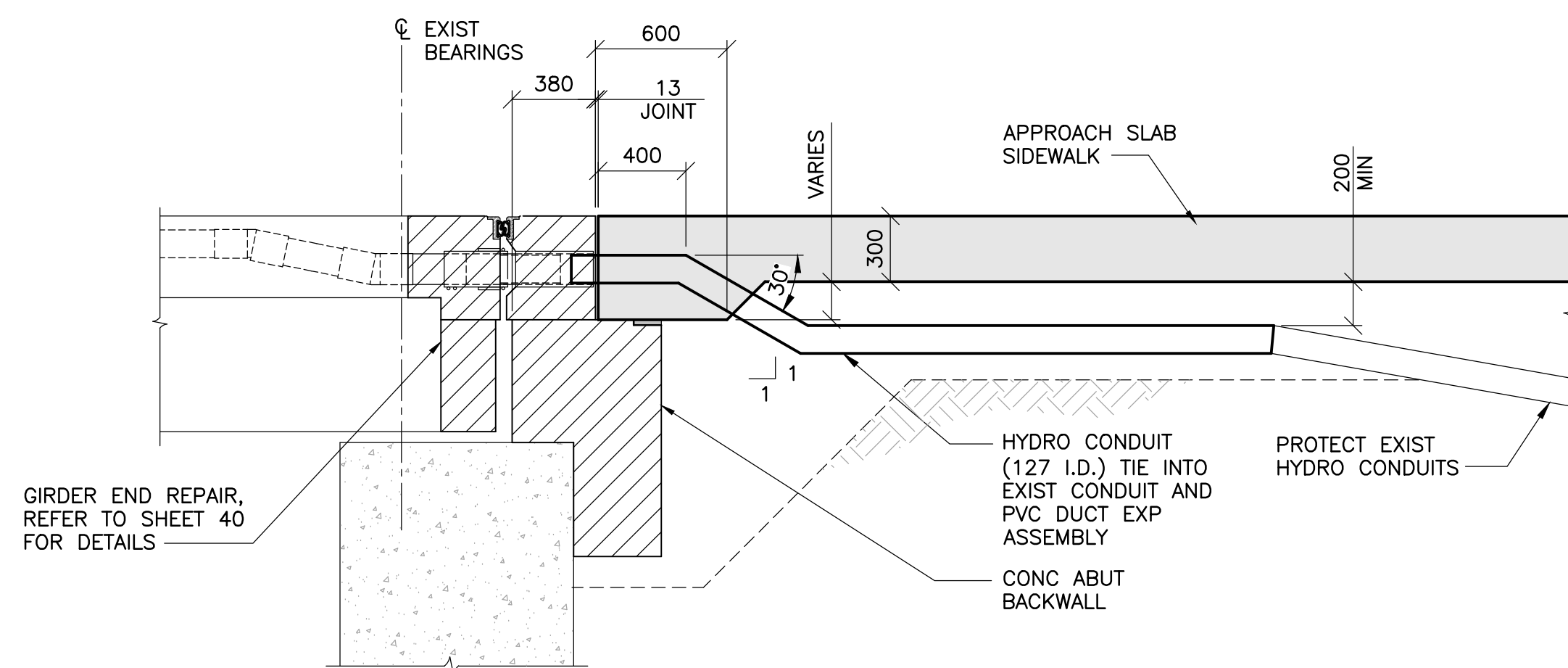
4 APPROACH SLAB SIDEWALK - SECTION
48 50 1 : 25



5 EXPANSION SLAB SIDEWALK - SECTION
48 50 1 : 25



6 ROADWAY SLAB SIDEWALK - SECTION
48 50 1 : 25



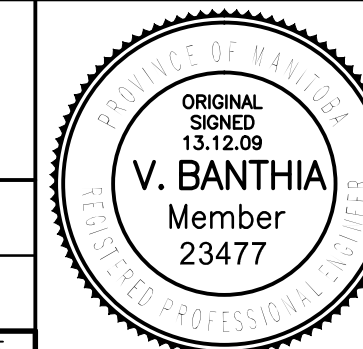
7 SECTION AT SIDEWALK
48 50 1 : 25
- SALVAGE EXIST MTS CONDUITS THAT TIE INTO CONCRETE DUCT BANK. SPLICE EXISTING CONDUIT WITH NEW CONDUIT AND EXPANSION SLEEVES AT EXPANSION JOINT AND PORTION OF APPROACH SIDEWALK.



B.M. ELEV.	F.B.	DATE	BY
0	ISSUED FOR TENDER	13.12.09	V.B.
	NO. REVISIONS	DATE	BY
		13.07.18	



DESIGNED BY	D.M.	CHECKED BY	V.B.
DRAWN BY	G.I.	APPROVED BY	E.F.S.
HOR. SCALE:	AS NOTED	RELEASED FOR CONSTRUCTION	DATE
VERTICAL:		ORIGINAL SIGNED	13.12.09
		D. BURNER, P. ENG. BRIDGE PROJECTS ENGINEER	



CONSULTANT DRAWING NO.
1300070700-DWG-S0050



PORTAGE AVENUE TWIN BRIDGES OVER STURGEON CREEK REHABILITATION AND RELATED WORKS	CITY DRAWING NUMBER B178-14-050 SHEET 50 OF 70
PHASE 2 CONSTRUCTION EAST APPROACH SECTIONS	50