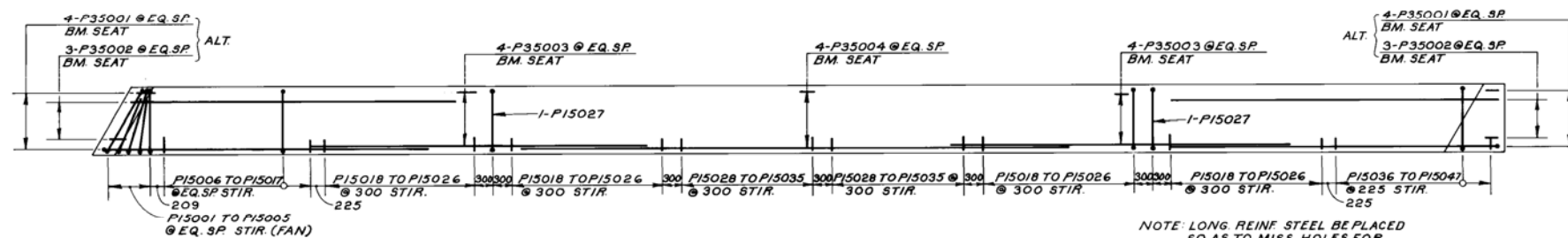
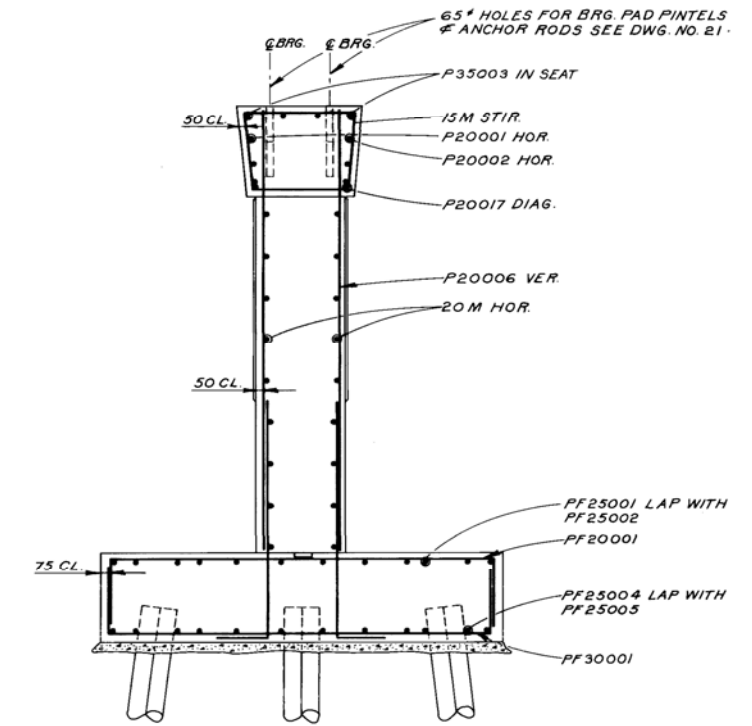


**FOOTING PLAN**

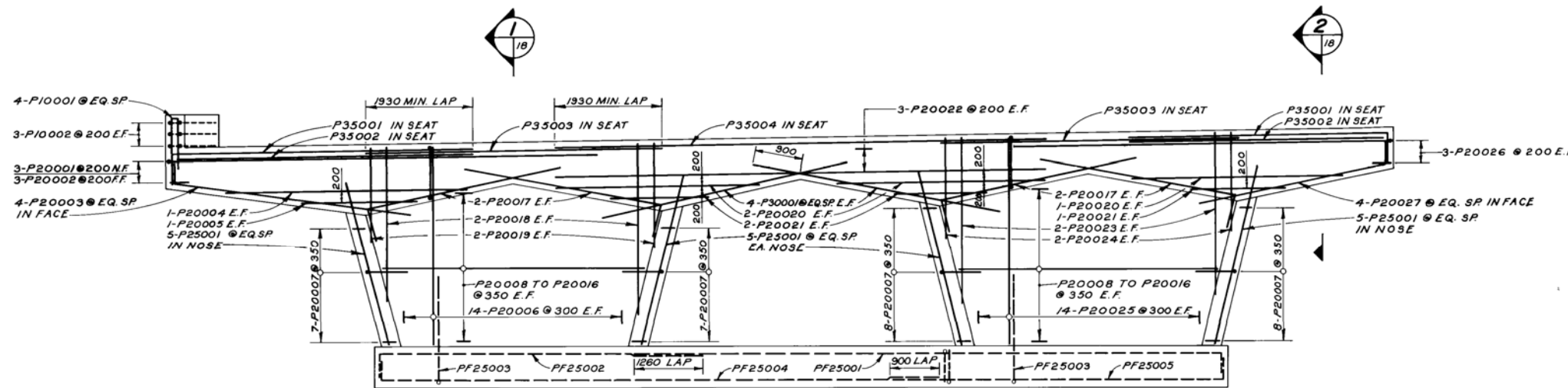


**PIER CAP PLAN**

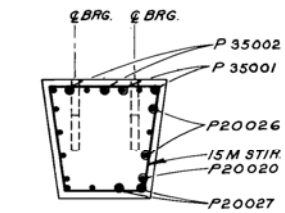
NOTE: LONG REINF STEEL BE PLACED SO AS TO MISS HOLES FOR BRG. PAD P/INTELS & ANCHOR RODS. SEE DWG. NO. 21.



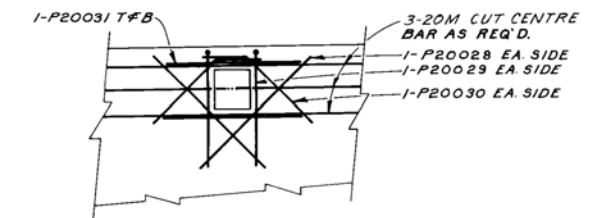
**SECTION 1**  
SCALE: 1:30



**ELEVATION**



**SECTION 2**  
SCALE: 1:30



**LIGHT INSERT DETAIL**  
SCALE: 1:30  
SHOWING ADDITIONAL REINFORCING  
SEE DWG. NO. 17 FOR LOCATION.  
4-REQ'D. PER PIER.

AS NOTED  
APPROVED BY: *[Signature]*

B-5404

NO	REVISIONS	DATE	APP

27/7/80  
C.R.B.  
23/9/80  
ENGINEER'S SEAL

**DILLON** Consulting Engineers & Planners

DESIGNED BY: C.I.D.	DRAWN BY: C.R.B.
CHECKED BY: L.D.M.	DATE: 80-08-25
APPROVED BY: <i>[Signature]</i>	DATE: 23/9/80

**THE CITY OF WINNIPEG**  
WORKS & OPERATIONS  
STREETS & TRANSPORTATION

**STURGEON CREEK BRIDGE ON PORTAGE AVENUE SOUTH STRUCTURE PIERS SU-2 & SU-3 REINF.**

AUTHORIZED BY: <i>[Signature]</i>	DATE: 1980-10-22
ACCEPTED BY: <i>[Signature]</i>	DATE: 10-10-22
SCALE: 1:50 OR AS NOTED	DRAWING NO: B178-80-18