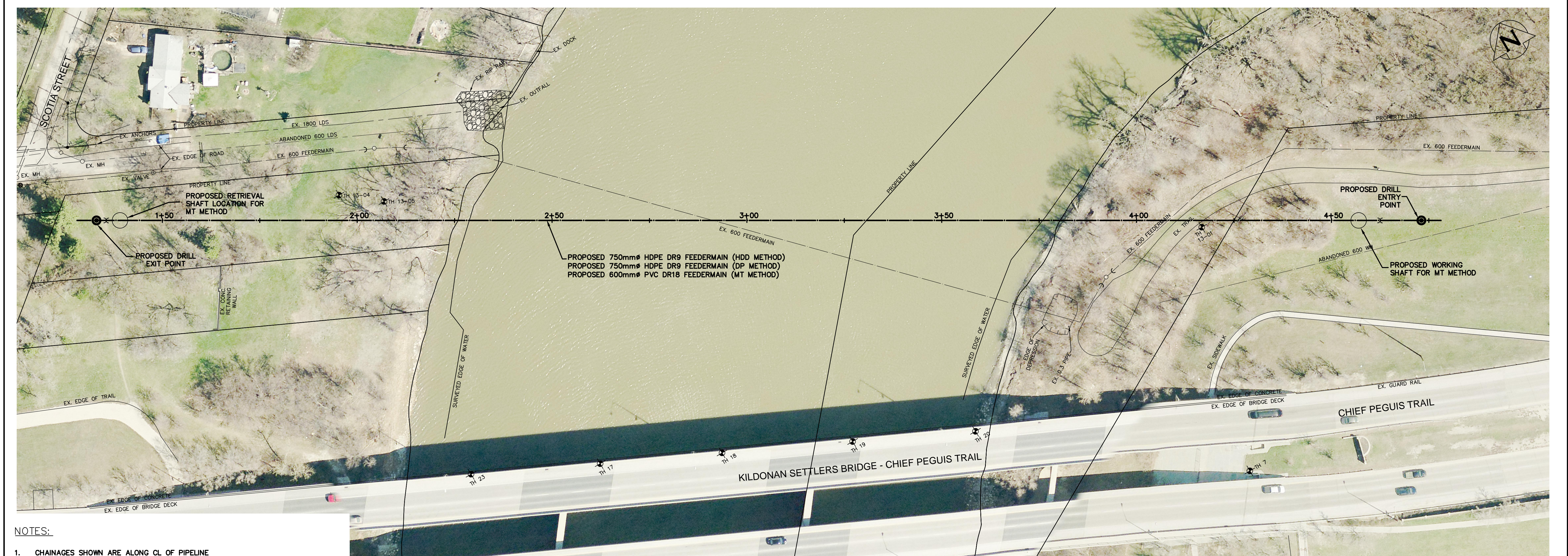
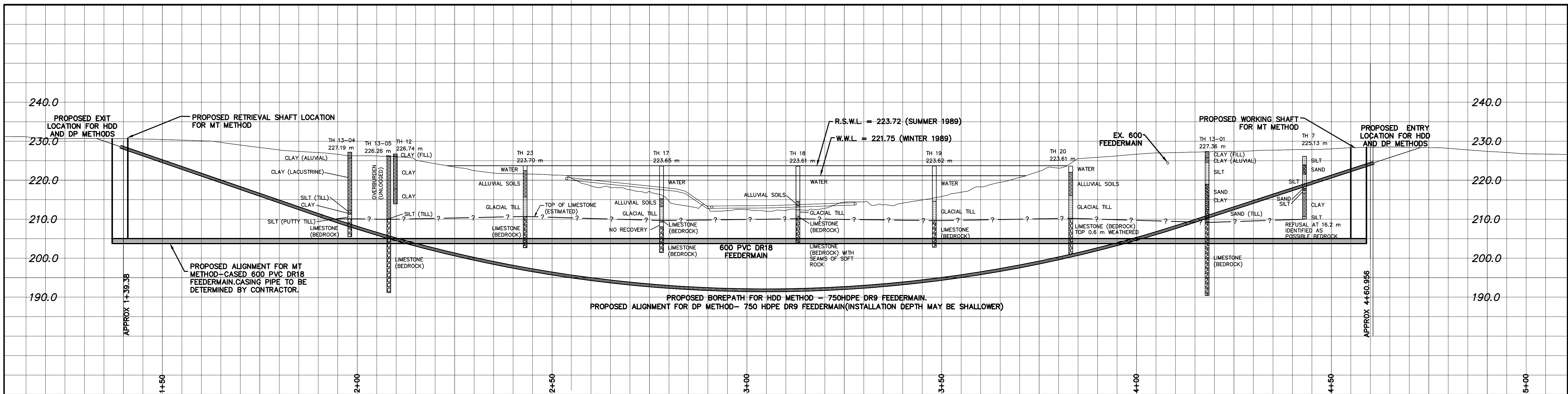
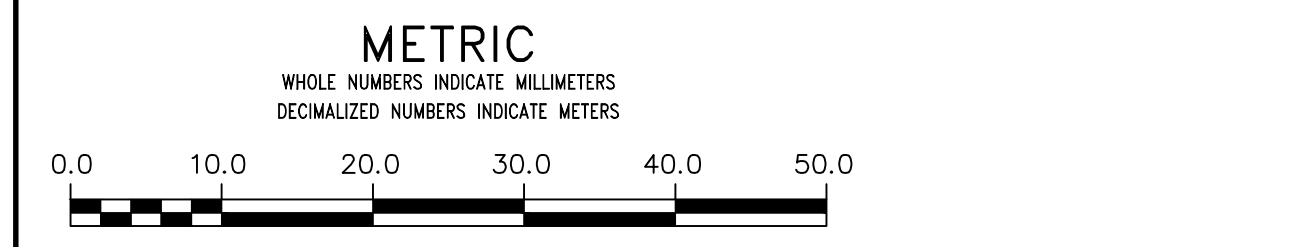


APPENDIX A – NORTH KILDONAN RIVER CROSSING CONCEPTUAL PLAN AND PROFILES



- NOTES:**
- CHAINAGES SHOWN ARE ALONG CL OF PIPELINE
 - PROPOSED BOREPATH AND ALIGNMENTS ARE SHOWN FOR INFORMATION ONLY. CONTRACTOR TO CONFIRM AND DETERMINE ENTRY AND EXIT LOCATIONS AND ALL INSTALLATION PARAMETERS FOR THEIR PARTICULAR INSTALLATION METHOD.
 - THIS DRAWING ILLUSTRATES THE CONCEPTUAL ALIGNMENT OF THE NEW FEEDERMAIN FOR THE PURPOSES OF PREQUALIFICATION OF TRENCHLESS CONTRACTORS. TENDER ISSUE DRAWINGS MAY HAVE ADDITIONAL DETAILS AND REQUIREMENTS FOR INSTALLATION



WARNING

IF POWER EQUIPMENT OR EXPLOSIVES ARE TO BE USED FOR EXCAVATION ON THIS PROJECT THE CONTRACTOR MUST:

- NOTIFY THE GAS COMPANY OF THE PROPOSED LOCATION OF EXCAVATION.
- TAKE PRECAUTION TO AVOID DAMAGE TO GAS COMPANY INSTALLATIONS.

SEE PROVINCIAL REGULATION 210/72 FOR DETAILS

LOCATION APPROVED
UNDERGROUND STRUCTURES

SUPV. U/G STRUCTURES COMMITTEE DATE

NOTE:
LOCATION OF UNDERGROUND STRUCTURES AS SHOWN ARE BASED ON THE BEST INFORMATION AVAILABLE BUT NO GUARANTEE IS GIVEN THAT ALL EXISTING UTILITIES ARE SHOWN OR THAT THE GIVEN LOCATIONS ARE EXACT. CONFIRMATION OF EXISTENCE AND EXACT LOCATION OF ALL UTILITIES MUST BE OBTAINED FROM THE INDIVIDUAL UTILITIES BEFORE PROCEEDING WITH CONSTRUCTION.

B.M. ELEV.	
CONSTRUCTION COMPLETION DATE: YYYY MM DD	
ISSUED FOR RFQ	14-OCT-31 SF
NO.	REVISIONS
DATE	BY

		DESIGNED BY	CL	CHECKED BY	JL
		DRAWN BY	S.F	APPROVED BY	JL
SCALE:		RELEASED FOR CONSTRUCTION			
HORIZONTAL 1:500		DATE			
VERTICAL 1:500		2014 10 30			
DATE		PLOT DATE: 2014 10 30			

ENGINEER'S SEAL

CONSULTANT DRAWING NUMBER

20134376

THE CITY OF WINNIPEG
WATER AND WASTE DEPARTMENT
ENGINEERING DIVISION

Winnipeg

**NORTH KILDONAN RIVER CROSSING
CONCEPTUAL PLAN AND PROFILES
RED RIVER CROSSING
STATION 1+39 TO 4+65**

SHEET 1 OF 1
CITY DRAWING NUMBER