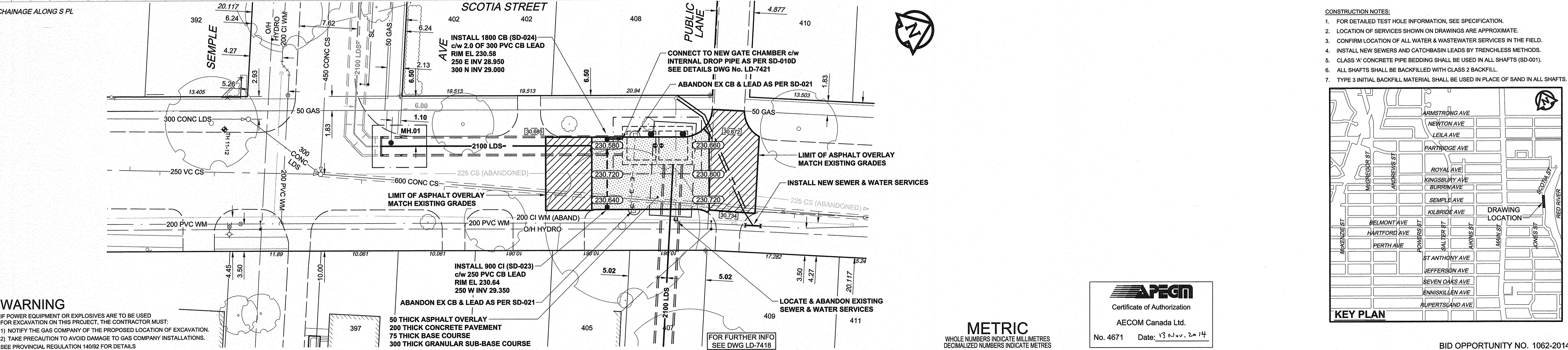
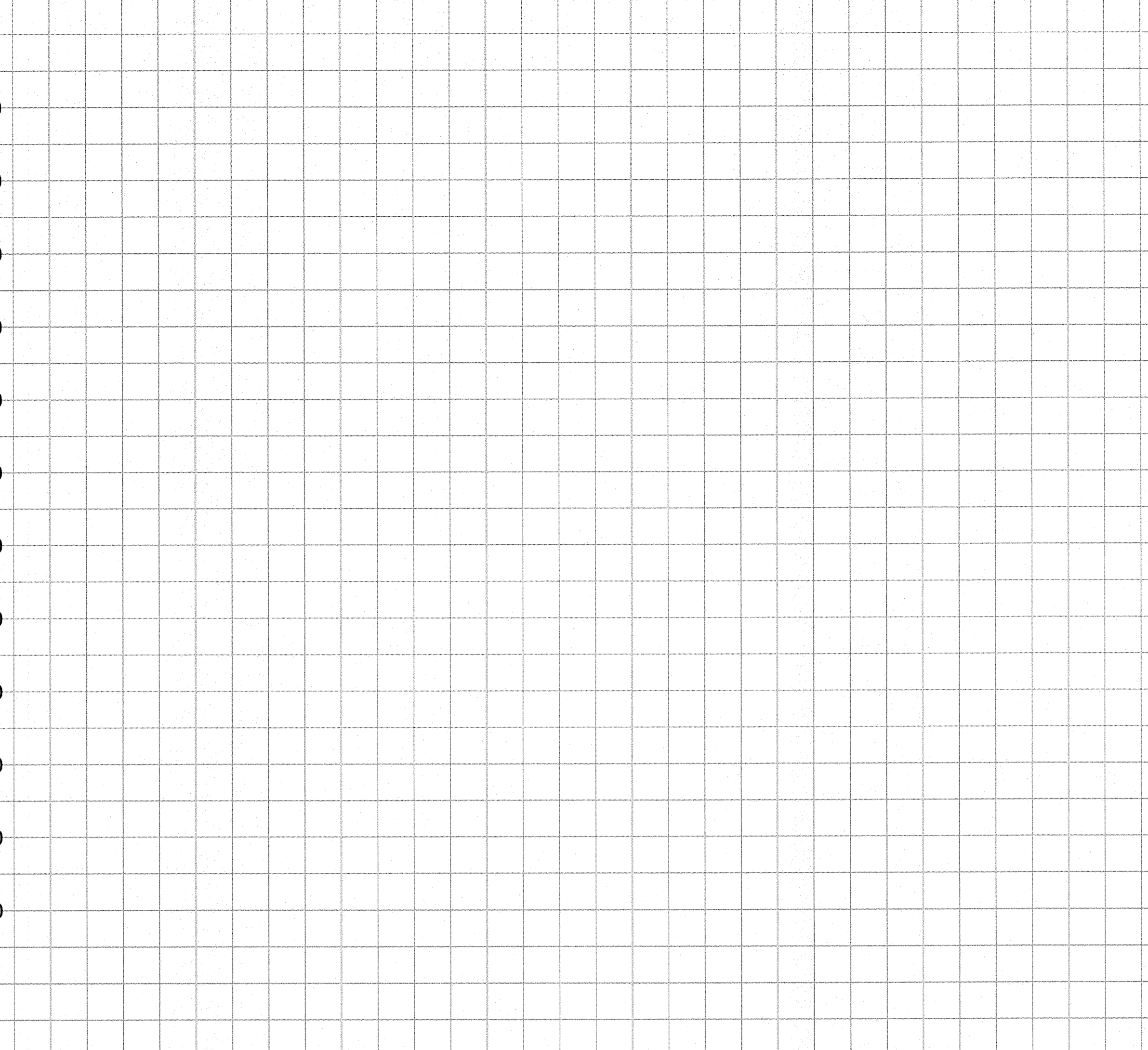
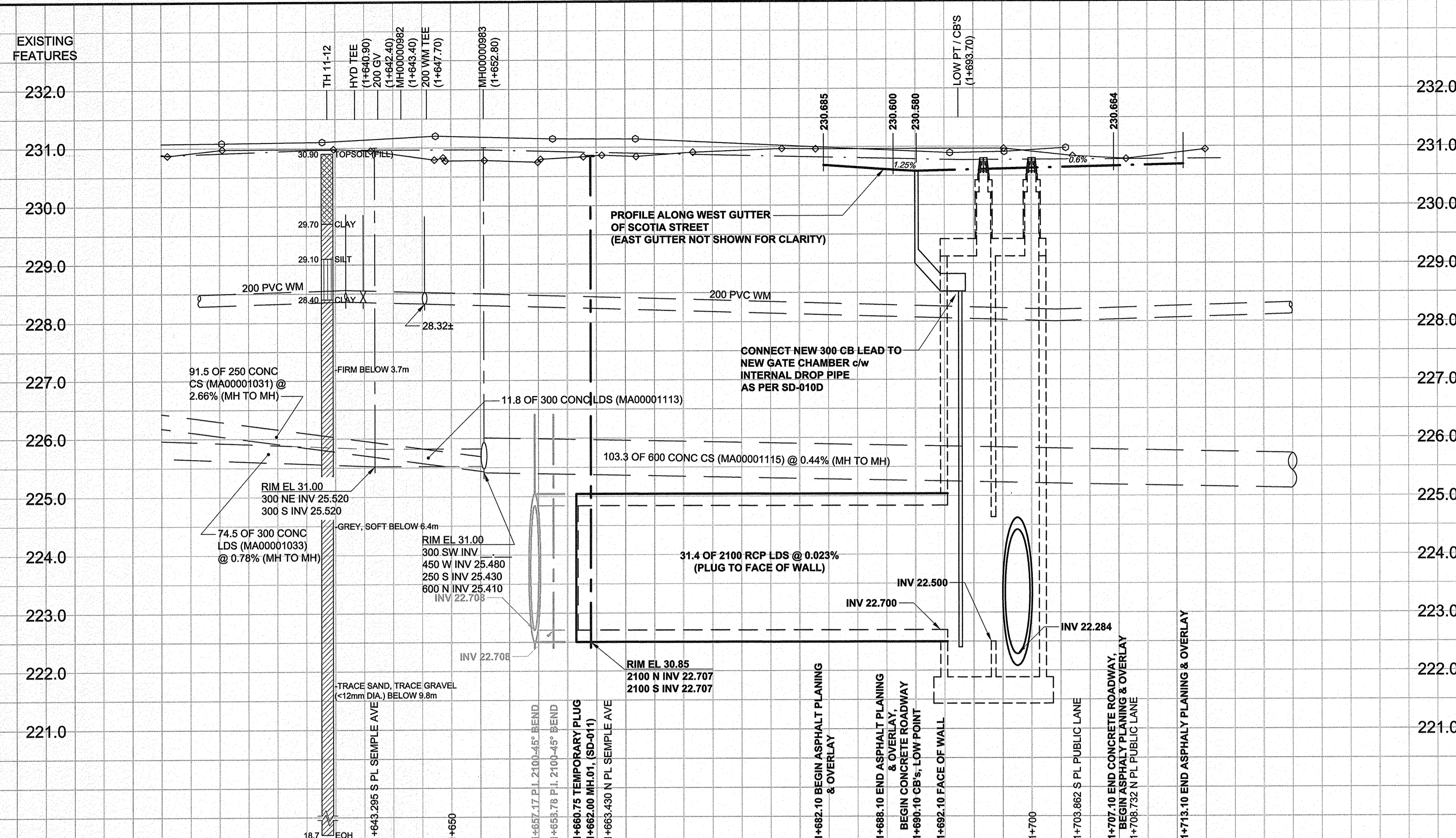


D SIZE 22" x 34" (559mm x 864mm)

PLOT: 11/13/2014 8:39:05 AM

AECOM FILE NAME: P:\60219315\000-CADD\DWG\0402-SHEET\SC60219315-SHT-00-Cont4-C-1001.dwg Saved By:



WARNING
IF POWER EQUIPMENT OR EXPLOSIVES ARE TO BE USED FOR EXCAVATION ON THIS PROJECT, THE CONTRACTOR MUST:
1) NOTIFY THE GAS COMPANY OF THE PROPOSED LOCATION OF EXCAVATION.
2) TAKE PRECAUTION TO AVOID DAMAGE TO GAS COMPANY INSTALLATIONS.
SEE PROVINCIAL REGULATION 140/92 FOR DETAILS

EXISTING	LEGEND - PLAN	NEW	EXISTING	LEGEND - PLAN	NEW	EXISTING	LEGEND - PROFILE	NEW
○	150 WM	○	○	150 WM	○	○	150 WM	○
○	WATERMAIN	○	○	WATERMAIN	○	○	WATERMAIN	○
○	HYDRANT	○	○	HYDRANT	○	○	HYDRANT	○
○	VALVE	○	○	VALVE	○	○	VALVE	○
○	300 LDS	○	○	300 LDS	○	○	300 LDS	○
○	LAND DRAINAGE SEWER	○	○	LAND DRAINAGE SEWER	○	○	LAND DRAINAGE SEWER	○
○	250 WWS	○	○	250 WWS	○	○	250 WWS	○
○	WASTE WATER SEWER	○	○	WASTE WATER SEWER	○	○	WASTE WATER SEWER	○
○	MANHOLE	○	○	MANHOLE	○	○	MANHOLE	○
○	CATCH BASIN	○	○	CATCH BASIN	○	○	CATCH BASIN	○
○	CURB INLET	○	○	CURB INLET	○	○	CURB INLET	○
○	CULVERT	○	○	CULVERT	○	○	CULVERT	○
○	PIPE ABANDONMENTS	○	○	PIPE ABANDONMENTS	○	○	PIPE ABANDONMENTS	○
○	SURVEY BAR	○	○	SURVEY BAR	○	○	SURVEY BAR	○
○	CURB STOP	○	○	CURB STOP	○	○	CURB STOP	○
○	REDUCER	○	○	REDUCER	○	○	REDUCER	○
○	COUPLING	○	○	COUPLING	○	○	COUPLING	○
○	ANODE	○	○	ANODE	○	○	ANODE	○
○	HYDRO	○	○	HYDRO	○	○	HYDRO	○
○	MTS	○	○	MTS	○	○	MTS	○
○	GAS	○	○	GAS	○	○	GAS	○
○	TESTHOLE	○	○	TESTHOLE	○	○	TESTHOLE	○
○	LAMP STANDARD	○	○	LAMP STANDARD	○	○	LAMP STANDARD	○
○	TREE	○	○	TREE	○	○	TREE	○

LOCATION APPROVED	UNDERGROUND STRUCTURES
○	50 THICK ASPHALT OVERLAY
○	200 THICK CONCRETE PAVEMENT
○	75 THICK BASE COURSE
○	300 THICK GRANULAR SUB-BASE COURSE
○	INSTALL 1800 CB (SD-024) c/w 2.0 OF 300 PVC CB LEAD RIM EL 230.58 250 E INV 28.950 300 N INV 29.000
○	INSTALL 900 CI (SD-023) c/w 250 PVC CB LEAD RIM EL 230.64 250 W INV 29.350
○	ABANDON EX CB & LEAD AS PER SD-021
○	CONNECT TO NEW GATE CHAMBER c/w INTERNAL DROP PIPE AS PER SD-010D SEE DETAILS DWG No. LD-7421
○	ABANDON EX CB & LEAD AS PER SD-021
○	LOCATE & ABANDON EXISTING SEWER & WATER SERVICES
○	INSTALL NEW SEWER & WATER SERVICES
○	LIMIT OF ASPHALT OVERLAY MATCH EXISTING GRADES
○	LIMIT OF ASPHALT OVERLAY MATCH EXISTING GRADES

NO.	ISSUED FOR TENDER	DATE	BY
0	ISSUED FOR TENDER	14/11/12	WJ/J
NO.	REVISIONS	YYMMDD	BY

AECOM
WHOLE NUMBERS INDICATE MILLIMETRES
DECIMALIZED NUMBERS INDICATE METRES

DESIGNED BY: ADB
CHECKED BY: JAT
DRAWN BY: ADL
APPROVED BY: [Signature]
HOR. SCALE: 1:250
VERT. SCALE: 1:50
DATE: [Blank]
RELEASED FOR CONSTRUCTION: [Blank]

APEGM
Certificate of Authorization
AECOM Canada Ltd.
No. 4671 Date: 13 Nov. 2014

THE CITY OF WINNIPEG
WATER AND WASTE DEPARTMENT

JEFFERSON EAST
COMBINED SEWER RELIEF
CONTRACT 4 - SEMPLE OUTFALL

SCOTIA STREET
SEMPLE AVENUE TO
24m SOUTH OF BURRIN AVENUE

SHEET 01 OF 07
CITY DRAWING NUMBER
LD-7417 0

- CONSTRUCTION NOTES:**
- FOR DETAILED TEST HOLE INFORMATION, SEE SPECIFICATION.
 - LOCATION OF SERVICES SHOWN ON DRAWINGS ARE APPROXIMATE.
 - CONFIRM LOCATION OF ALL WATER & WASTEWATER SERVICES IN THE FIELD.
 - INSTALL NEW SEWERS AND CATCHBASIN LEADS BY TRENCHLESS METHODS.
 - CLASS 'A' CONCRETE PIPE BEDDING SHALL BE USED IN ALL SHAFTS (SD-001).
 - ALL SHAFTS SHALL BE BACKFILLED WITH CLASS 2 BACKFILL.
 - TYPE 3 INITIAL BACKFILL MATERIAL SHALL BE USED IN PLACE OF SAND IN ALL SHAFTS.

