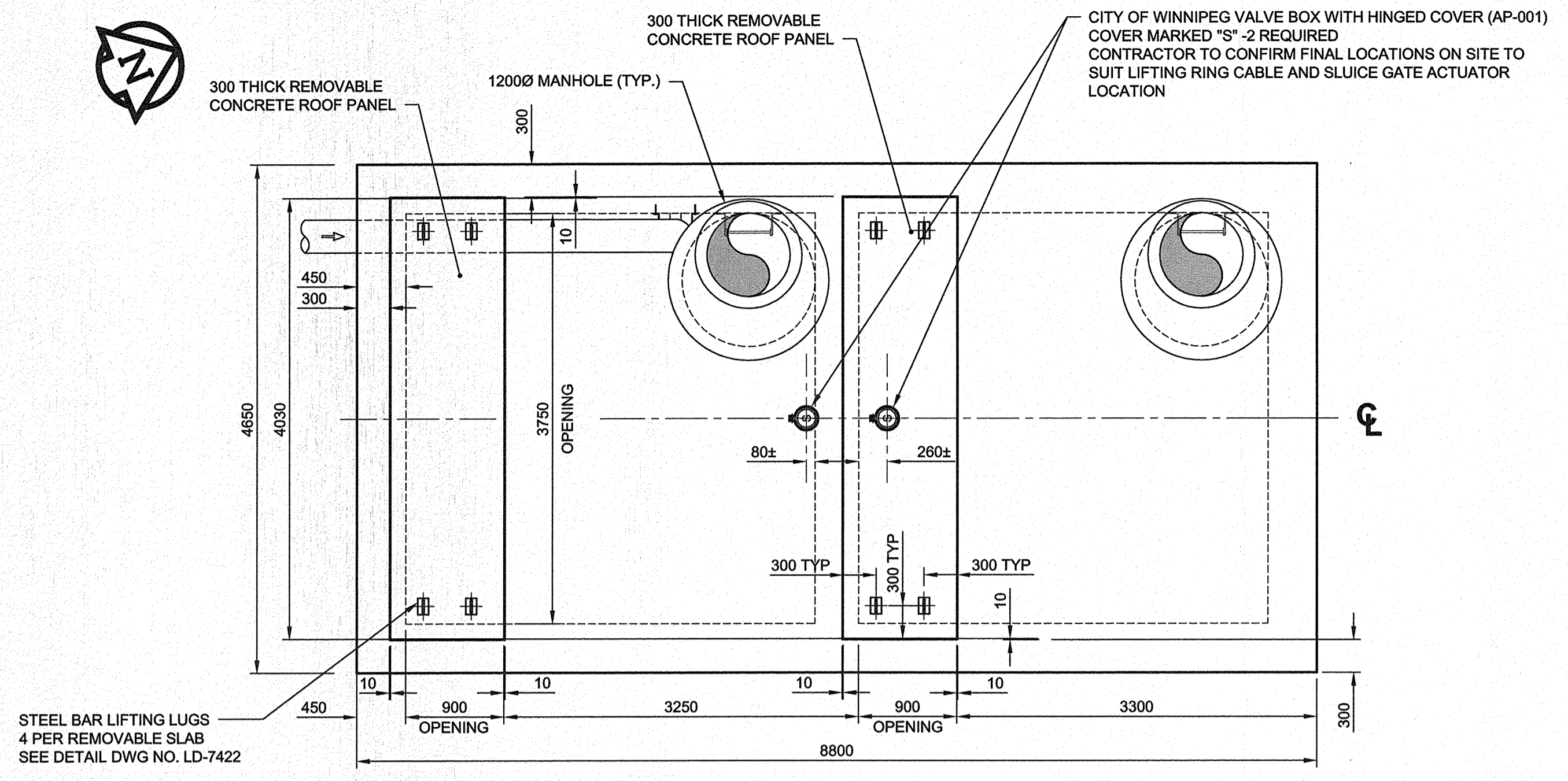
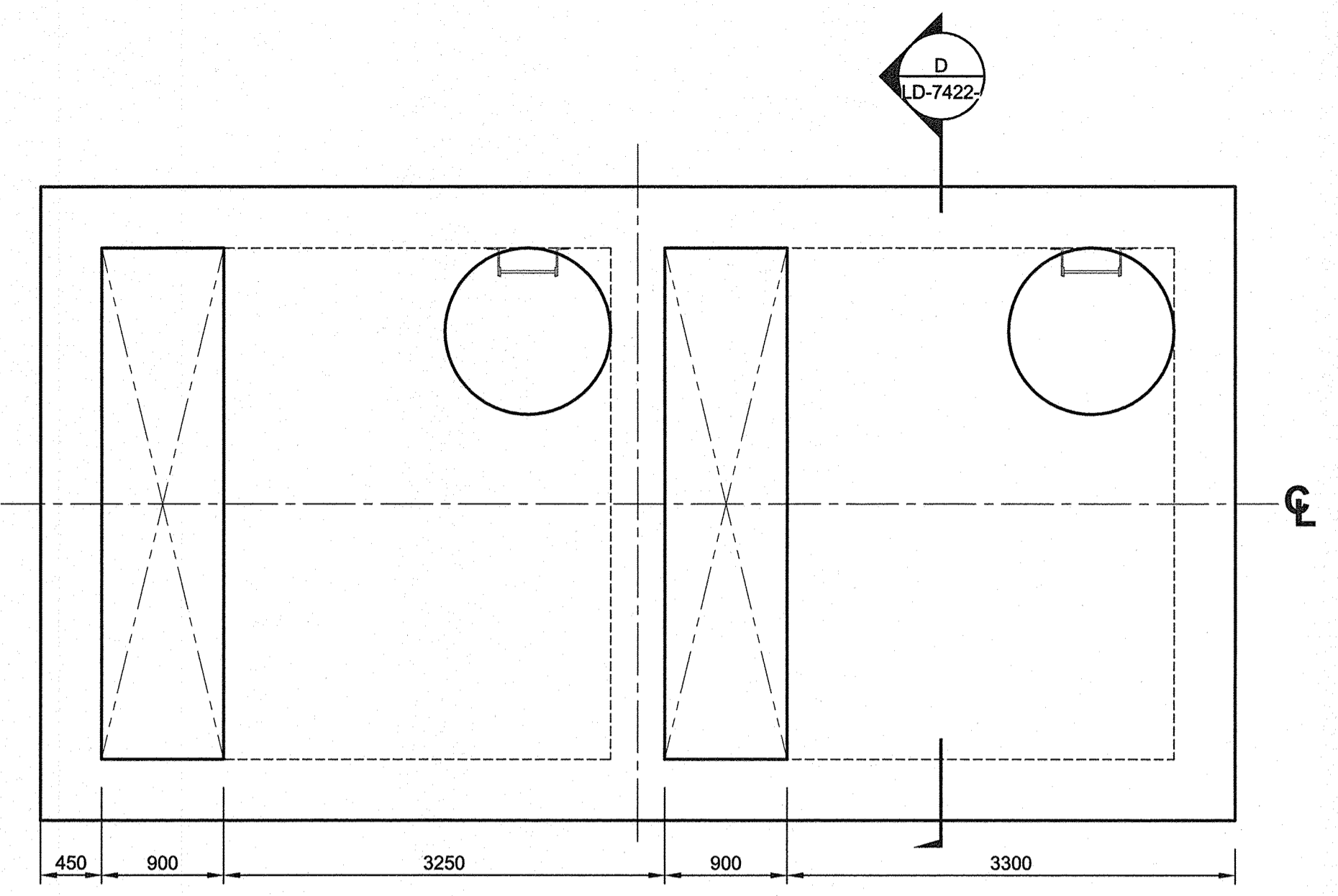


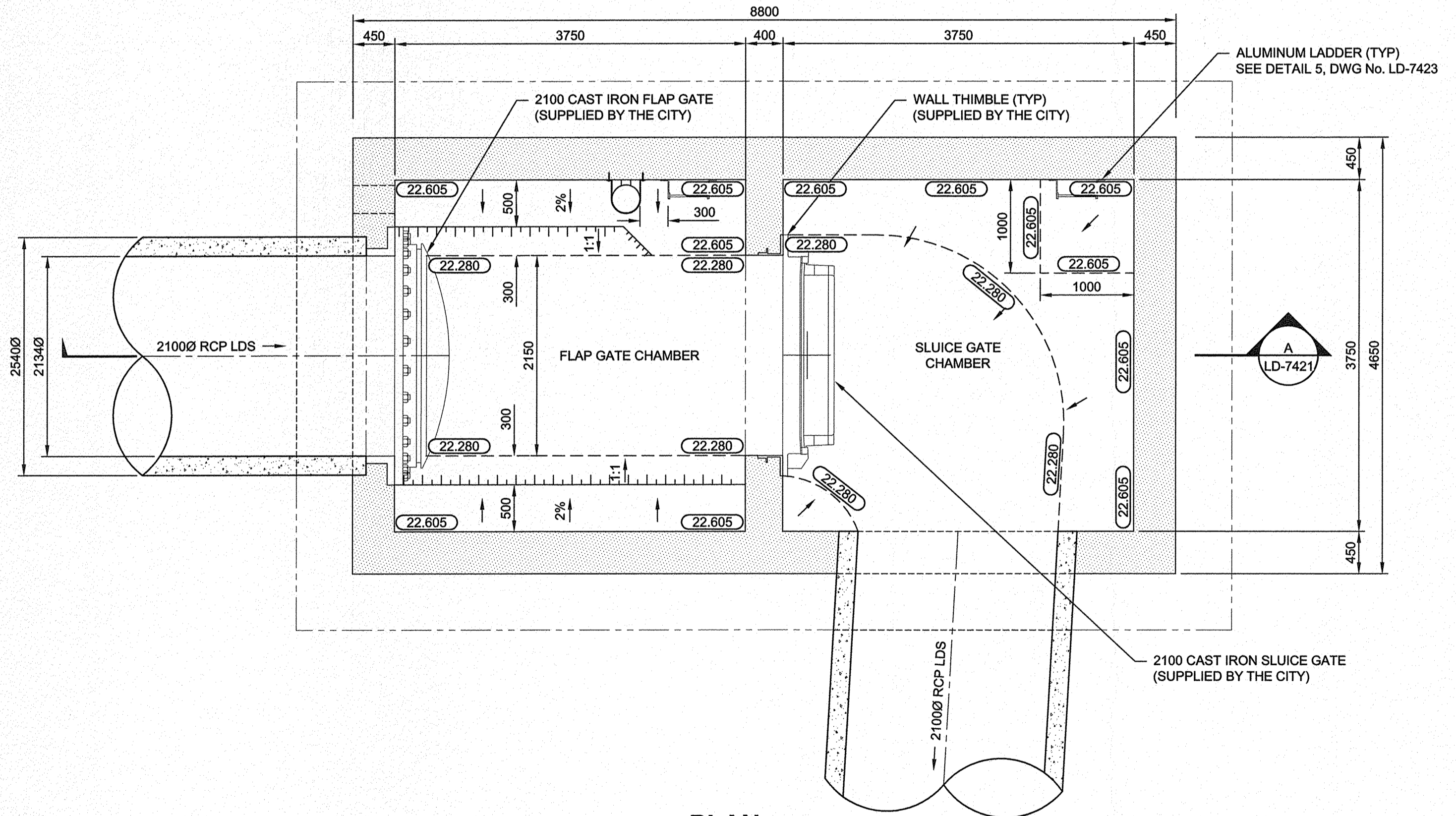
D SIZE 22" x 34" (559mm x 864mm)
 PLOT: 11/13/2014 9:22:28 AM
 AECOM REVIEW DRFT CHK
 AECOM FILE NAME: P:\02\19315\000-CAD\DWG-040-CAED-BIM\WIP\Sheets\0402-SHEET\19315-SHT-00-Com4-S-3001.dwg Saved By: denouderw



LAYOUT
 EL 230.80±
 0 1000 2000 mm
 1:40



PLAN
 EL 229.00
 0 1000 2000 mm
 1:40



PLAN
 EL 222.700
 0 1000 2000 mm
 1:40

GENERAL NOTES

- ALL DIMENSIONS ARE IN MILLIMETERS UNLESS OTHERWISE NOTED. ALL ELEVATIONS ARE IN METERS AND ARE TO GEODETIC DATUM. THE CONTRACTOR SHALL VERIFY DIMENSIONS BEFORE BEGINNING CONSTRUCTION AND REPORT DISCREPANCIES TO THE CONTRACT ADMINISTRATOR BEFORE PROCEEDING WITH THE WORK. DO NOT SCALE THE DRAWINGS.
- THIS STRUCTURE IS DESIGNED IN ACCORDANCE WITH AND SHALL BE CONSTRUCTED IN COMPLIANCE WITH THE FOLLOWING BUILDING CODES AND APPLICABLE LOCAL BYLAWS:
 - ACI 350-06 ENVIRONMENTAL STRUCTURES
 - WHERE CONTRADICTION REQUIREMENTS OCCUR, THE MOST STRINGENT SHALL APPLY.
- DISCREPANCIES OR AMBIGUITIES ON THE DRAWINGS AND/OR SITE, WHICH AFFECT THE STRUCTURAL FRAMING, SHALL BE REPORTED TO THE CONTRACT ADMINISTRATOR.
- THE CONTRACTOR SHALL VERIFY THE LOCATION OF ALL EXISTING UNDERGROUND SERVICES PRIOR TO START OF CONSTRUCTION.
- LOCATION OF CONSTRUCTION JOINTS IS THE RESPONSIBILITY OF THE CONTRACTOR, BUT APPROVAL MUST BE GRANTED BY THE CONTRACT ADMINISTRATOR BEFORE PROCEEDING.
- THE CONTRACTOR SHALL BE RESPONSIBLE FOR THE DESIGN AND INSTALLATION OF ALL NECESSARY SHORING, BRACING AND FORMWORK. FORM WORK FOR NEW CONSTRUCTION SHALL BE BRIDGED OVER EXISTING SERVICES. PROCEDURE MUST BE APPROVED BY THE CONTRACT ADMINISTRATOR.
- NOTIFY THE CONTRACT ADMINISTRATOR AT LEAST 48 HOURS PRIOR TO ALL CONCRETE POURS AND/OR INSTALLATION OF INTERIOR SHEATHING/FORMING, TO ALLOW FOR SITE REVIEWS. ALL CONCRETE WORK TO CSA A23.1 (LATEST).

CONCRETE

- ALL CONCRETE WORK TO CSA A23.1 (LATEST). TEST CONCRETE TO CSA A23.2 (LATEST).
- CONCRETE SHALL MEET THE FOLLOWING REQUIREMENTS:

| MIX TYPE | INTENDED APPLICATION | MINIMUM COMPRESSIVE STRENGTH (MPa) | CSA EXPOSURE CLASS | CONCRETE COVER TO REINFORCING STEEL (mm) |
|----------|---------------------------------------|------------------------------------|--------------------|--|
| 1 | STRUCTURAL CONCRETE FOR ROOFS & WALLS | 35 | S-1 | 50 |
| 2 | STRUCTURAL CONCRETE FOR BASE SLAB | 35 | S-1 | 50 TOP 75 BOTTOM |

- FORMWORK AND FALSEWORK SHALL BE COMPLETED BY A PROFESSIONAL ENGINEER REGISTERED IN THE PROVINCE OF MANITOBA. SUBMIT TO ENGINEER FOR REVIEW.

REINFORCING STEEL

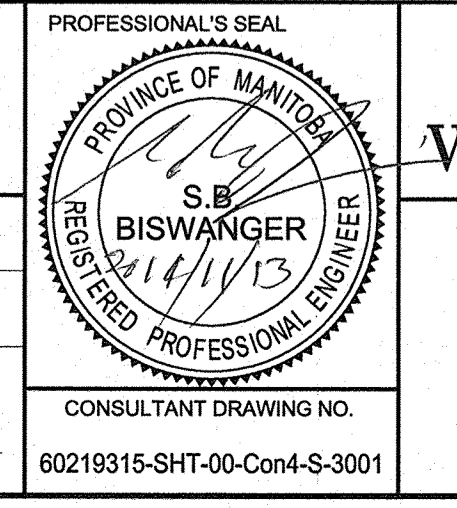
- REINFORCING STEEL: NEW DEFORMED BARS TO CSA G30.18 "BILLET STEEL BARS FOR CONCRETE REINFORCEMENT", WITH MIN 400 MPa YIELD STRENGTH.
- DEFORMED BARS CONFORMING TO CSA G30.18, GRADE 400. LAP SPLICES AS PER CSA A23.3.
- REINFORCING WORK SHALL BE IN ACCORDANCE WITH CSA A23.1 AND CSA A23.3.



METRIC
 WHOLE NUMBERS INDICATE MILLIMETRES
 DECIMALIZED NUMBERS INDICATE METRES

| LOCATION APPROVED | | UNDERGROUND STRUCTURES | |
|---|-------------------|------------------------|-----|
| SUPR. U/G STRUCTURES | DATE | COMMITTEE | |
| | | | |
| NOTE: LOCATION OF UNDERGROUND STRUCTURES AS SHOWN ARE BASED ON THE BEST INFORMATION AVAILABLE. BUT NO GUARANTEE IS GIVEN THAT ALL EXISTING UTILITIES ARE SHOWN OR THAT THE GIVEN LOCATIONS ARE EXACT. CONFIRMATION OF EXISTENCE AND EXACT LOCATION OF ALL SERVICES MUST BE OBTAINED FROM THE INDIVIDUAL UTILITIES BEFORE PROCEEDING WITH CONSTRUCTION. | | | |
| 0 | ISSUED FOR TENDER | 14/11/12 | WJD |
| NO. | REVISIONS | YYMMDD | BY |

| | |
|----------------------|---------------------------|
| AECOM | |
| DESIGNED BY: JAT | CHECKED BY: EDT |
| DRAWN BY: ADL | APPROVED BY: can |
| HOR. SCALE: AS NOTED | RELEASED FOR CONSTRUCTION |
| VERT. SCALE: N/A | DATE |



BID OPPORTUNITY NO. 1062-2014

THE CITY OF WINNIPEG
WATER AND WASTE DEPARTMENT

JEFFERSON EAST
COMBINED SEWER RELIEF
CONTRACT 4 - SEMPLE OUTFALL
GATE CHAMBER
 STRUCTURAL PLANS

SHEET 04 OF 07
 CITY DRAWING NUMBER
LD-7420
 REV 0