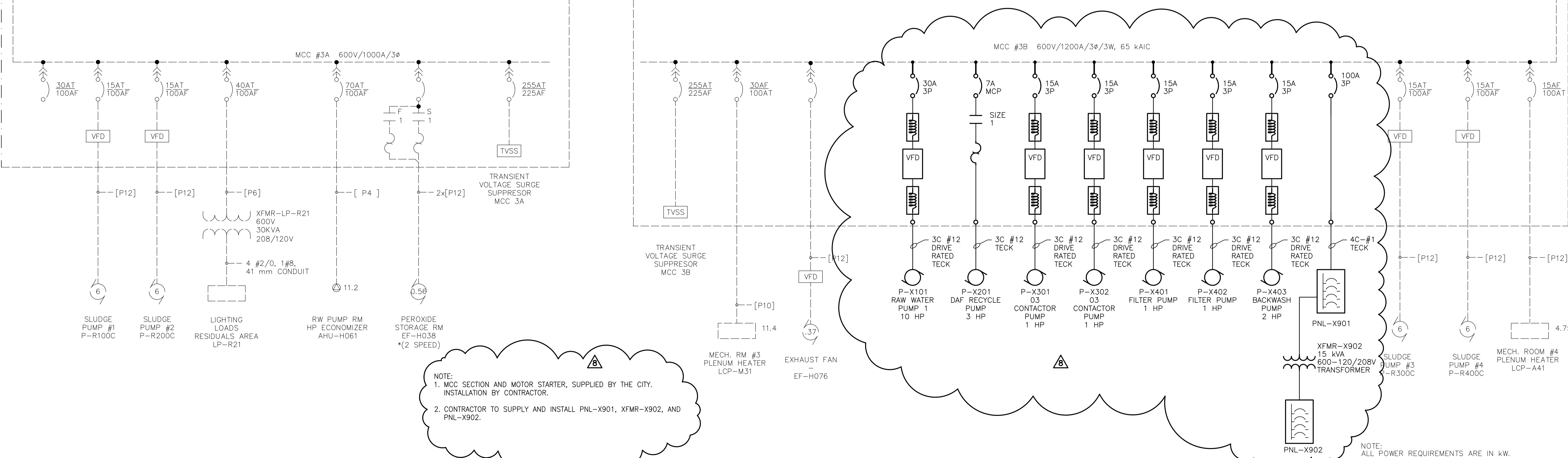
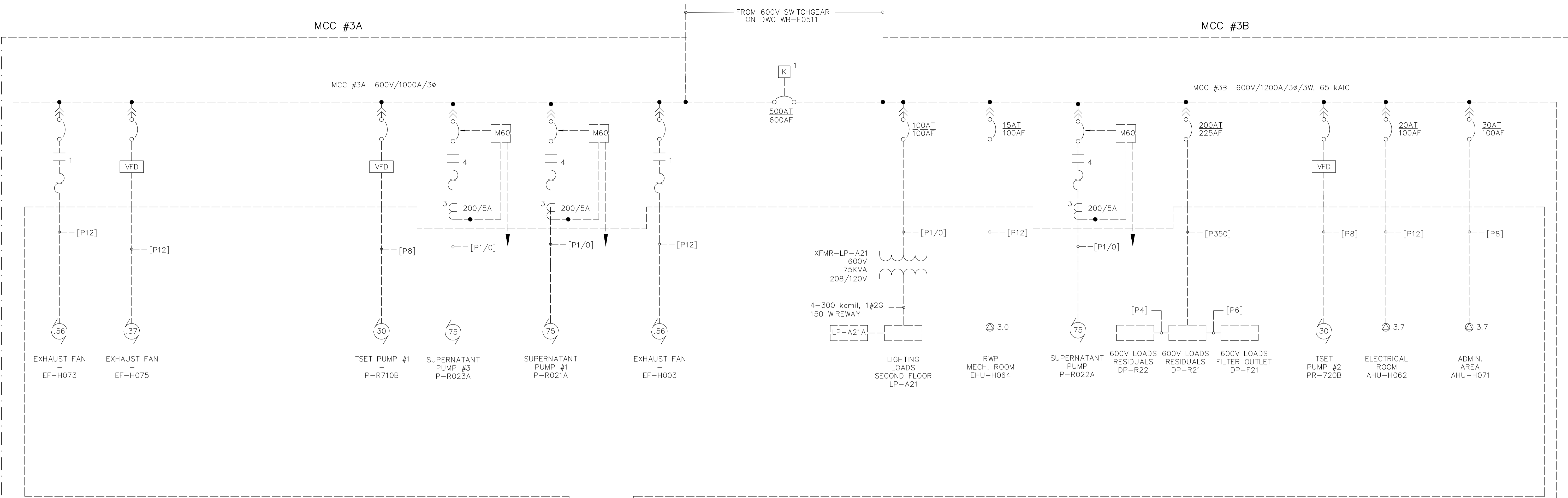


MCC #3A

MCC #3B

MCC #3A 600V/1000A/3Ø

MCC #3B 600V/1200A/3Ø/3W, 65 kAIC



NOTE:  
 1. MCC SECTION AND MOTOR STARTER, SUPPLIED BY THE CITY. INSTALLATION BY CONTRACTOR.  
 2. CONTRACTOR TO SUPPLY AND INSTALL PNL-X901, XFMR-X902, AND PNL-X902.

NOTE: ALL POWER REQUIREMENTS ARE IN kW.



**APEN**  
 Certificate of Authorization  
 Dillon Consulting Limited (MB)  
 No. 1789 Date: 2015-01-26

NO.	REVISIONS	DATE	BY
08	ISSUED FOR BID OP. 1068-2014	15/01/23	BLM
07	ISSUED FOR ADDENDUM 1	14/06/24	BLM
06	ISSUED FOR TENDER	14/06/13	BLM
05	ISSUED FOR 99% REVIEW	13/09/04	SKC
04	AS CONSTRUCTED	09/09/01	ACL
03	ISSUED FOR CONSTRUCTION	06/07/28	LL
02	742-2005 ADDENDUM 4	06/05/12	LL
01	742-2005 ADDENDUM 3	06/05/05	LL
00	ISSUED FOR TENDER	06/03/28	LL

DESIGNED BY	LL	CHECKED BY	ND
DRAWN BY	JT	APPROVED BY	
SCALE:	NTS	RELEASED FOR CONSTRUCTION BY:	
DATE	2005/06/29	DATE	

ENGINEER'S SEAL  
 B.L. MOORE  
 30th Jan 2015

**THE CITY OF WINNIPEG**  
 WATER AND WASTE DEPARTMENT  
 ENGINEERING DIVISION

**WATER TREATMENT PLANT MAIN BUILDING MECHANICAL AND ELECTRICAL**

ELECTRICAL (MCC #3A, 3B)  
 600V SINGLE LINE DIAGRAM

CITY FILE NUMBER  
 SHEET OF  
 CITY DRAWING NUMBER  
 1-0801B-E0006-004-08