

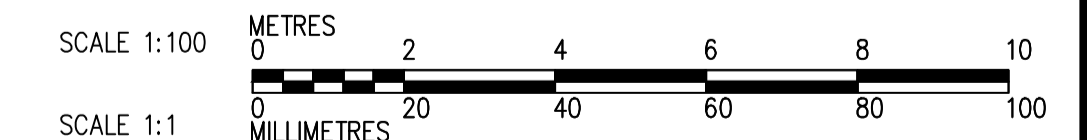
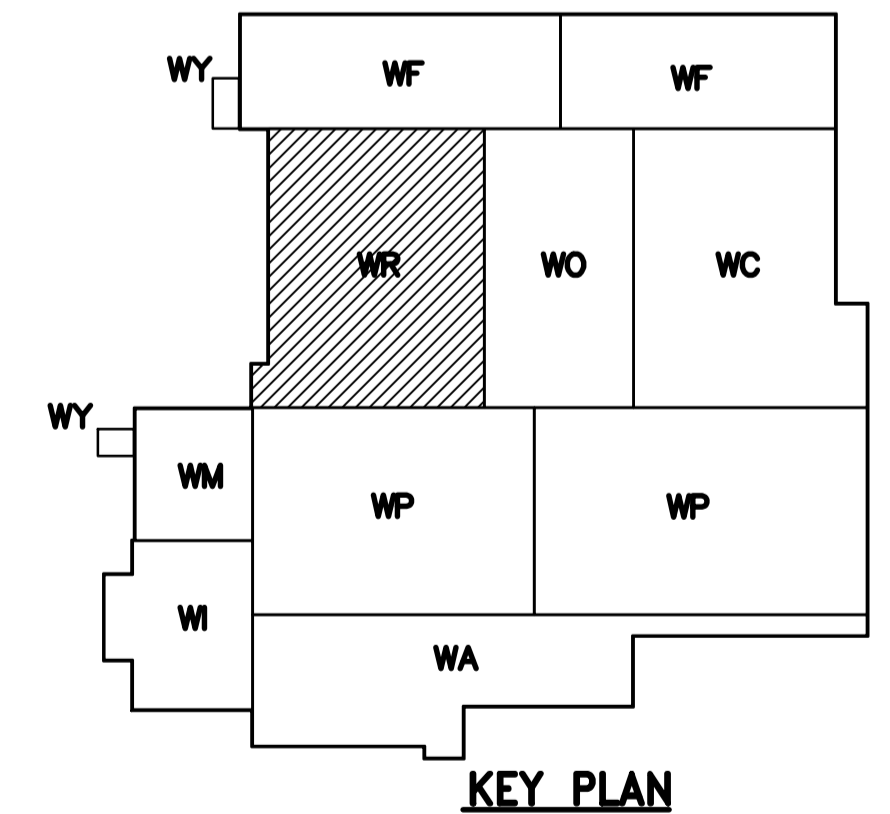
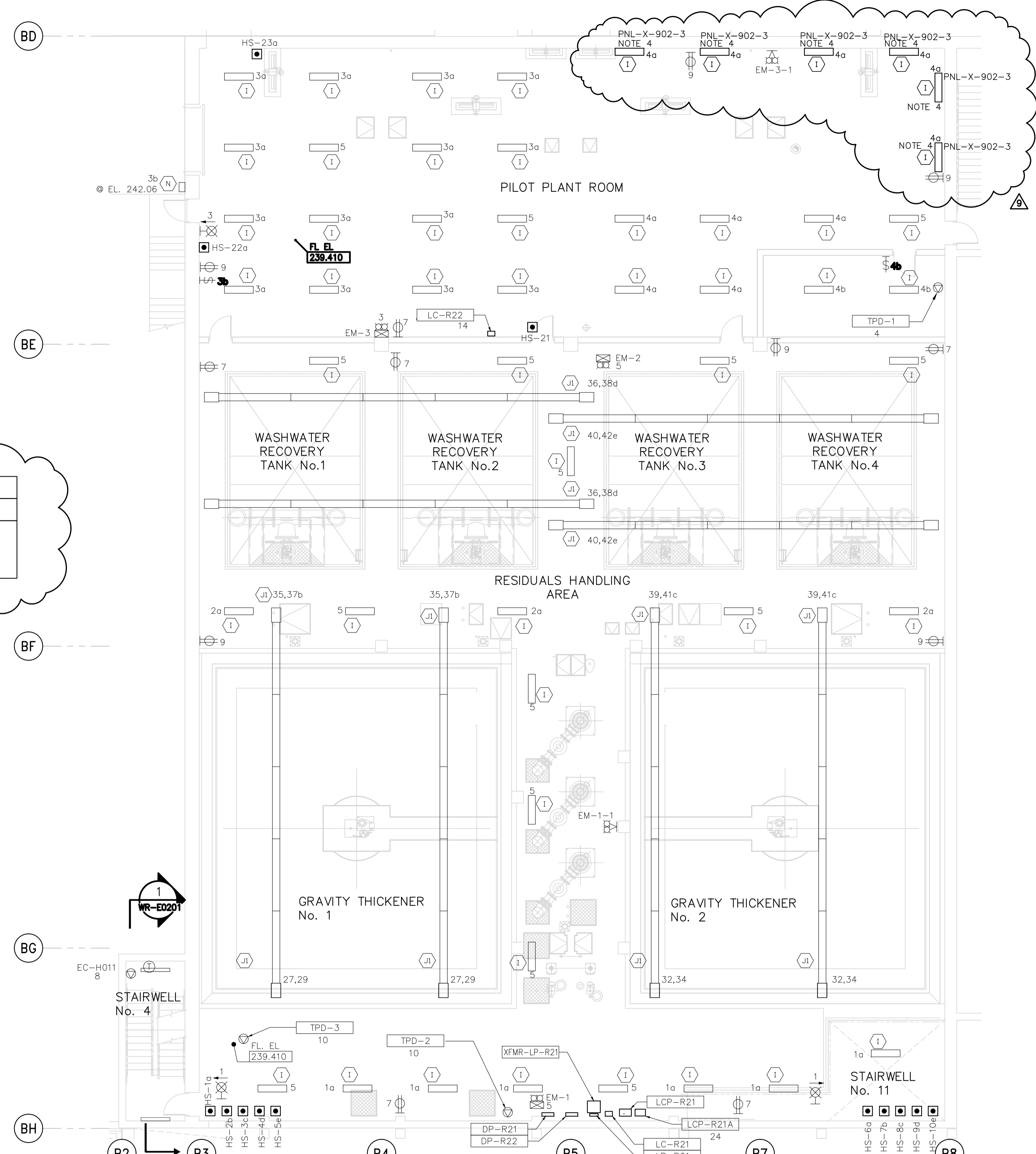
MEZZANINE POWER AND LIGHTING PLAN EL. 245.000

LUMINAIRE SCHEDULE

TYPE	DESCRIPTION	LAMP	LAMP WATTAGE	No. LAMPS	RATING	LUMENS	MODEL NUMBER	NOTES
1	COOPER (METALUX) VAPOUR TITE FLUORESCENT	T8	32	2	CORROSION RESISTANT	5700	VT3-232DR-UNV-EB81-WL-SSL	

NOTES:

- ALL 120V AND 208V LOADS ARE FED FROM LP-R21.
- EMERGENCY LIGHTING EM-X-1 ARE FED FROM BATTERY PACK EM-X.
- MOUNT TYPE A AND I LUMINAIRE AT 3.0m.
- WALL MOUNT AT 2.5m ABOVE FLOOR/GRATING.
- CONNECT HS-21a TO EXISTING LIGHTING CONTROL PANEL LC-R22.
- INSTALL TWO (2) NEW LIGHTING CONTROL RELAYS IN EXISTING LIGHTING CONTROL PANEL.



<p>Certificate of Authorization Dillon Consulting Limited (MB) No. 1789 Date: 2015-01-28</p>	09 ISSUED FOR BID OP. 1068-2014	15-01-23	BLM			<p>THE CITY OF WINNIPEG WATER AND WASTE DEPARTMENT ENGINEERING DIVISION</p>	<p>WATER TREATMENT PLANT RESIDUALS HANDLING MECHANICAL AND ELECTRICAL</p>	<p>ELECTRICAL RESIDUALS HANDLING AREA SECOND FLOOR POWER AND LIGHTING PLAN</p>	CITY FILE NUMBER
	08 ISSUED FOR ADDENDUM No.1	14-06-24	BLM						SHEET
	07 ISSUED FOR TENDER	14-06-13	BLM						OF
	06 ISSUED FOR 99% REVIEW	13-09-04	SCK						CITY DRAWING NUMBER
05 AS CONSTRUCTED	09/11/01	ACL	DESIGNED BY	BM	CHECKED BY	BM	<p>CONSULTANT DRAWING NO. WR-E0123</p>	<p>1-0601R-E0006-001-09</p>	
04 ISSUED FOR CONSTRUCTION	06/07/28	LL	DRAWN BY	SK	APPROVED BY	BW			
03 742-2005 ADDENDUM 12	06/06/23	PF	SCALE:	1:50	RELEASED FOR CONSTRUCTION BY:				
02 742-2005 ADDENDUM 5	06/06/19	LL	NO. REVISIONS	DATE	DATE	DATE			
01 742-2005 ADDENDUM 3	06/05/05	LL							
00 ISSUED FOR TENDER	06/03/29	LL							