

RACK 2.1

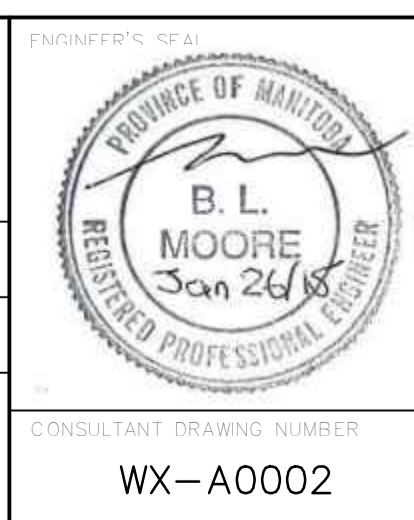
140 CPS 114 20	140 CRA 312 00	140 DRA 840 00 16 POINT %M33- %M48	140 DAI 540 00 16 POINT %I33- %I48	140 DAI 540 00 16 POINT %I49- %I64	140 AVI 030 00 8 POINT %IW64- %IW71	140 ACO 020 00 4 POINT %MW9- %MW12	140 ACO 020 00 4 POINT %MW13- %MW16		EMPTY	EMPTY	EMPTY	EMPTY	EMPTY	EMPTY	EMPTY
SLOT 1	SLOT 2	SLOT 3	SLOT 4	SLOT 5	SLOT 6	SLOT 7	SLOT 8	SLOT 9	SLOT 10	SLOT 11	SLOT 12	SLOT 13	SLOT 14	SLOT 15	SLOT 16

CP-H10B PLC RACK LAYOUT



B.M. ELEV.			
CONSTRUCTION COMPLETION DATE: YYYY MM DD			
NO.	REVISIONS	DATE	BY
3	ISSUED FOR BID OP. 1068-2014	15/01/23	BLM
2	ISSUED FOR TENDER	14/06/13	BLM
1	REVISED LAYOUT	14/05/15	BLM
0	ISSUED FOR TENDER	14/05/01	BLM

<b>CH2MHILL.</b>			
DESIGNED BY	BM	CHECKED BY	BM
DRAWN BY	SCK	APPROVED BY	
SCALE:	NTS	RELEASED FOR CONSTRUCTION	
HORIZONTAL			
VERTICAL			
DATE	2015 01 27	DATE	



<p>THE CITY OF WINNIPEG WATER AND WASTE DEPARTMENT ENGINEERING DIVISION</p>	<p>CITY OF WINNIPEG WATER TREATMENT RESEARCH AND PROCESS OPTIMIZATION FACILITY AUTOMATION CP-H10B PLC RACK LAYOUT</p>	<p>SHEET OF X CITY DRAWING NUMBER 1-0601X-A0002-001-03</p>
	<p>CONSULTANT DRAWING NUMBER WX-A0002</p>	