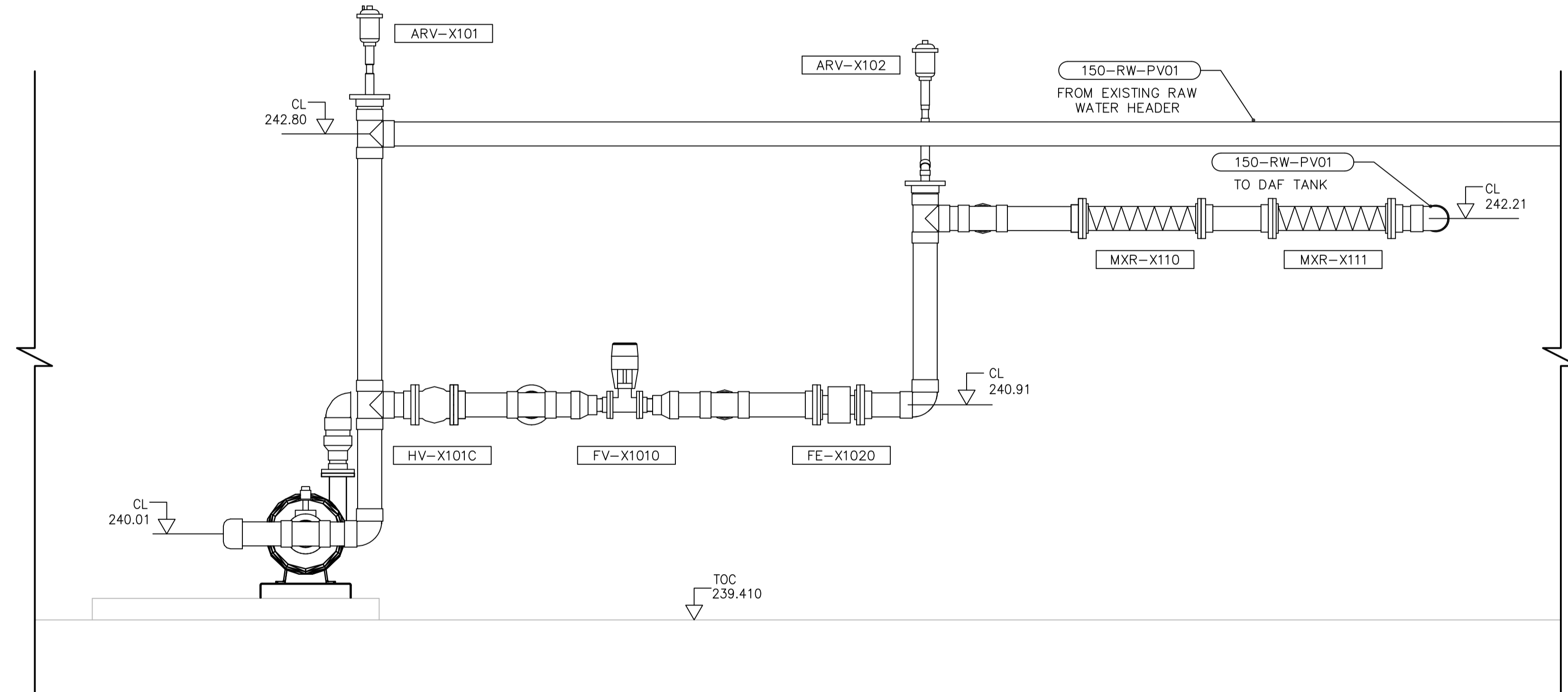
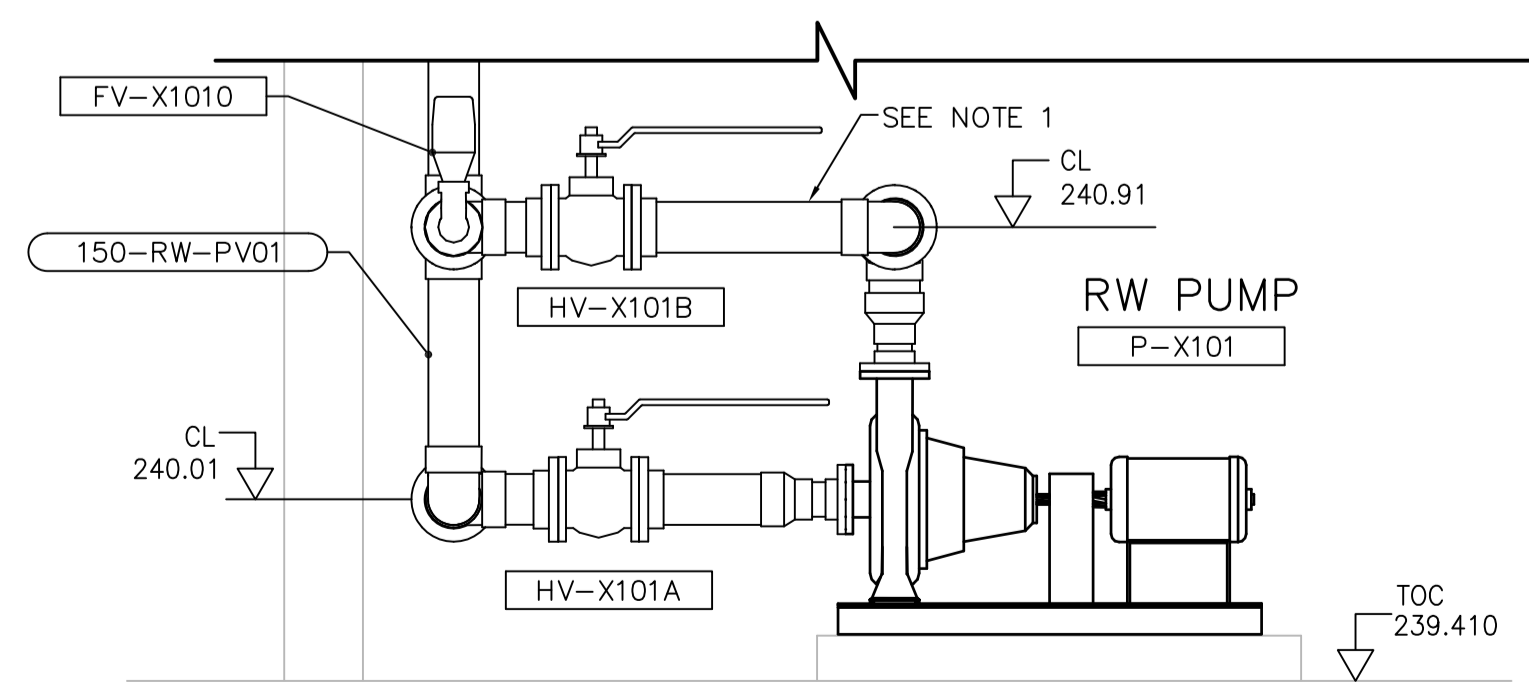


1 PARTIAL PLAN  
WX-M0121 1:25

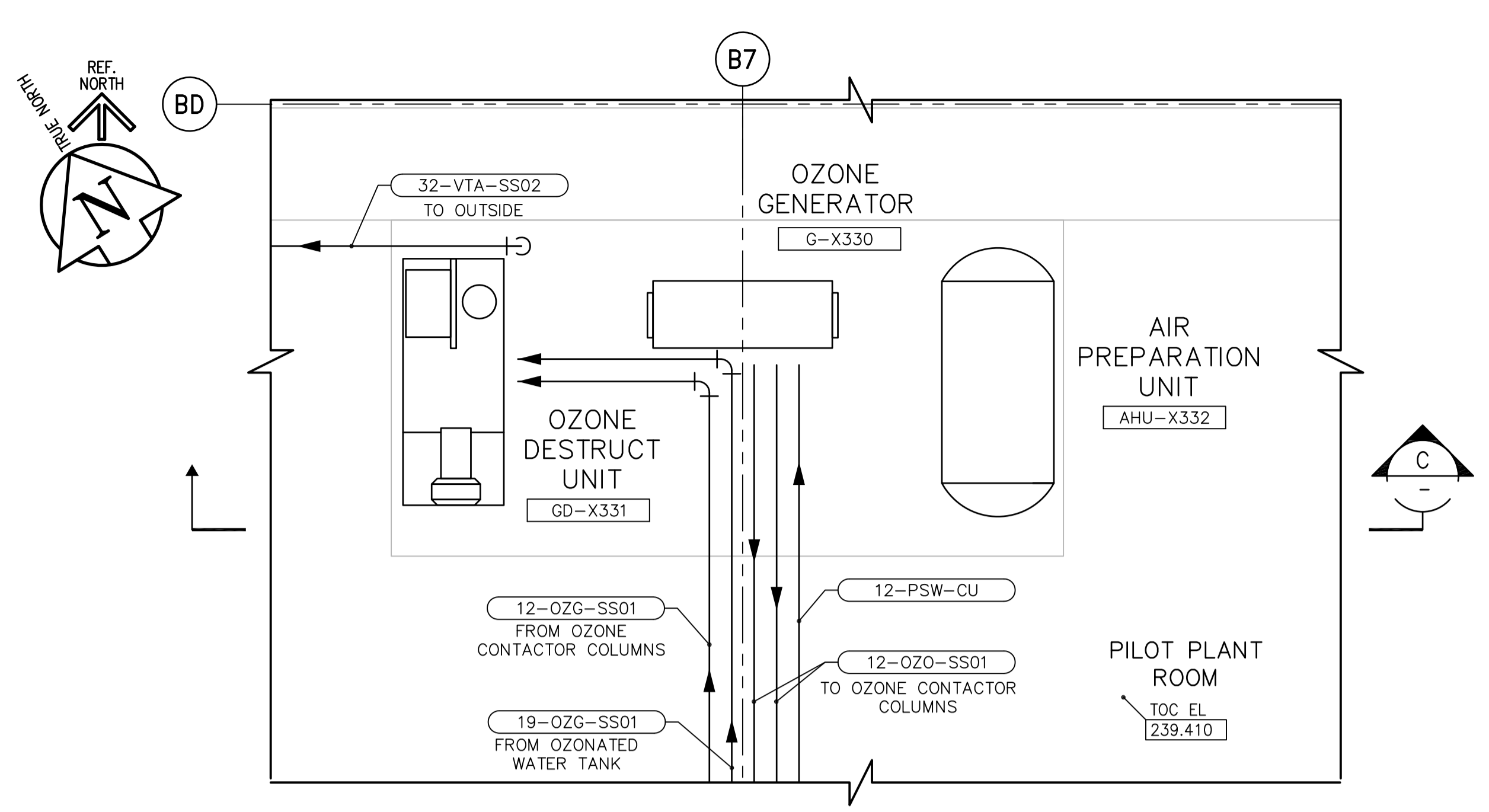


A SECTION  
1:25

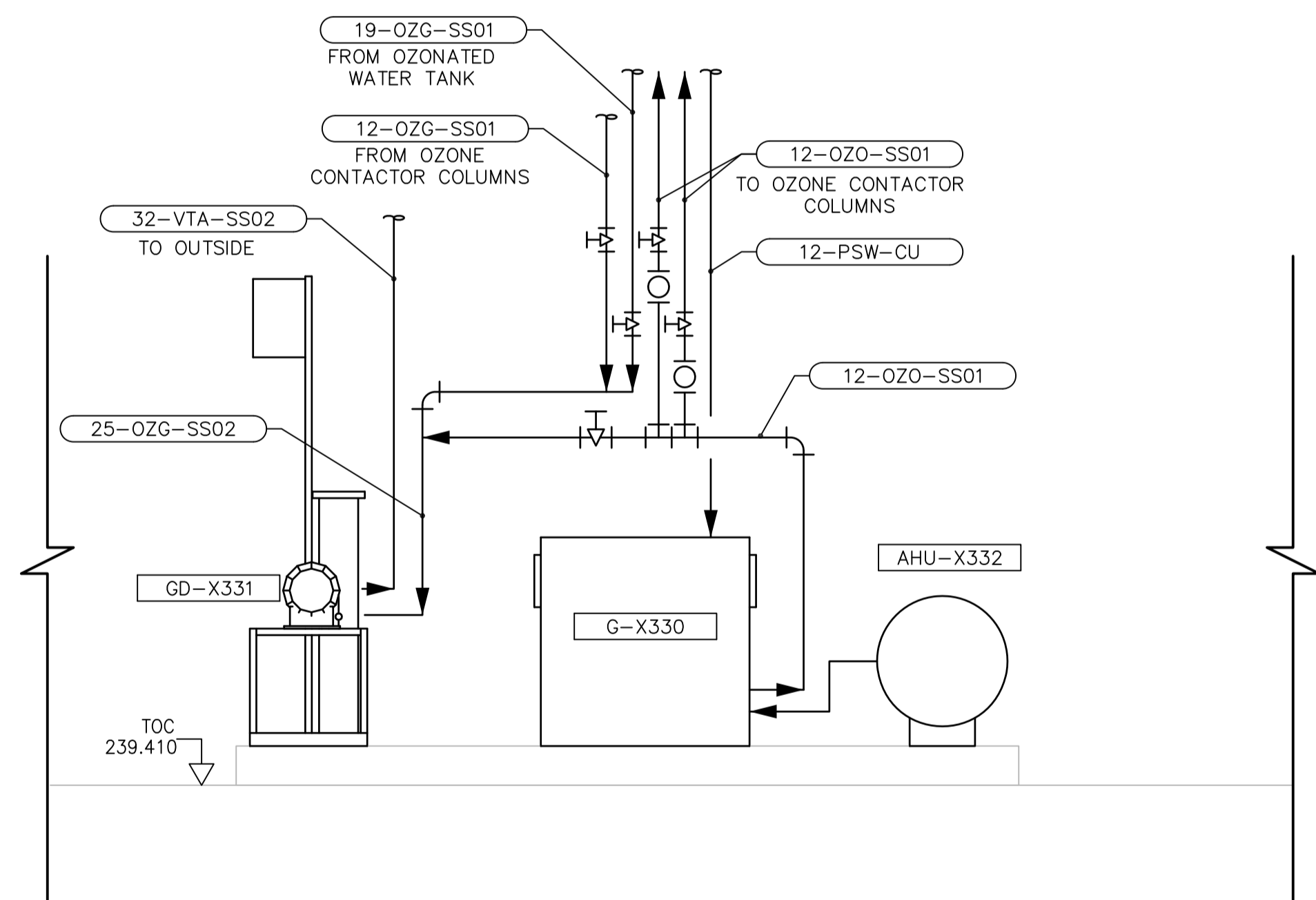


B SECTION  
1:25

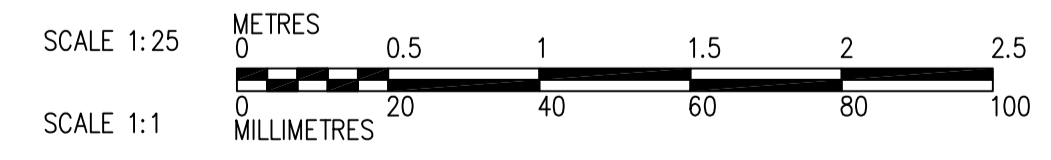
NOTE:  
1. CONTRACTOR TO PROVIDE SUITABLE UNISTRUT (OR EQUIVALENT) FRAMING TO SUPPORT 150 RAW WATER PIPE



2 PARTIAL PLAN  
WX-M0121 1:20



C SECTION  
1:20



B.M. ELEV.				<b>CH2MHILL</b>			
CONSTRUCTION COMPLETION DATE: YYYY MM DD				DESIGNED BY: KG			
				CHECKED BY: BW			
				DRAWN BY: JBC			
				APPROVED BY: BW			
				SCALE: HORIZONTAL 1:50			
				VERTICAL -			
				RELEASED FOR CONSTRUCTION DATE: 2014 06 13			
NO. REVISIONS				DATE BY			
1 ISSUED FOR BID OP. 1068-2014				15/01/23 JBC			
0 ISSUED FOR TENDER				14/06/13 JBC			
				DATE 2014 06 13			

ENGINEER'S SEAL	
CONSULTANT DRAWING NUMBER	
WX-M0124	

THE CITY OF WINNIPEG  
WATER AND WASTE DEPARTMENT  
ENGINEERING DIVISION

Winnipeg

CITY OF WINNIPEG WATER TREATMENT RESEARCH AND PROCESS OPTIMIZATION FACILITY  
PROCESS MECHANICAL  
PARTIAL PLAN AND SECTIONS  
SHEET 3 OF 3

SHEET X OF X  
CITY DRAWING NUMBER  
1-0601X-M0004-003-01

FILE PATH: \\WINNIPEG\Pro\WinnipegCityof\462784Waterworks\DW\DLV\  
FILE NAME: 462784-M-0121.dwg