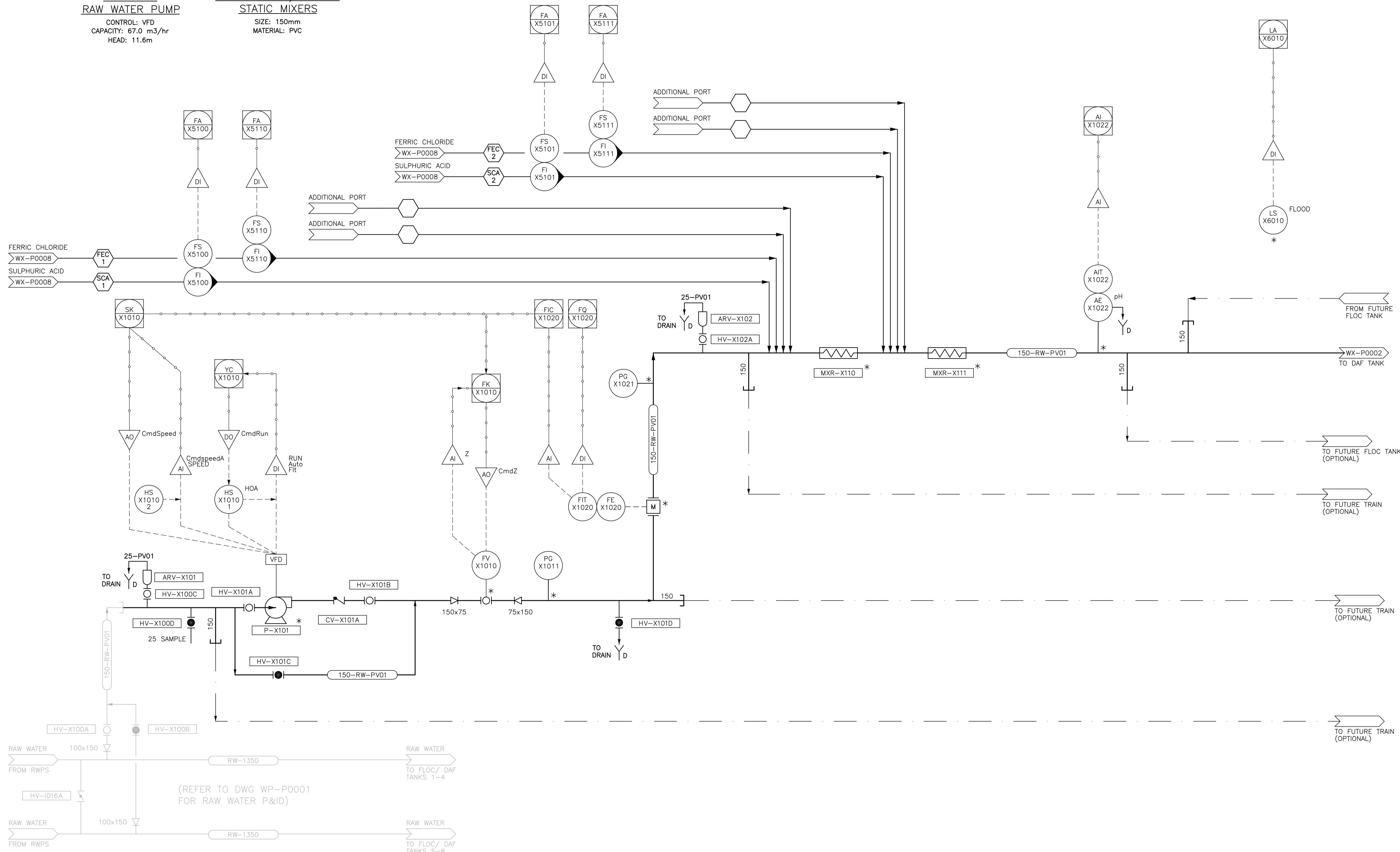


**P-X101
RAW WATER PUMP**

CONTROL: VFD
CAPACITY: 67.0 m³/hr
HEAD: 11.6m

**MXR-X110/ X111
STATIC MIXERS**

SIZE: 150mm
MATERIAL: PVC



NOTES:
* CITY OF WINNIPEG TO SUPPLY EQUIPMENT/ INSTRUMENTATION.
CONTRACTOR TO INSTALL.
DRAIN LINES FROM PROCESS LINES: 25mm PV01



B.M. ELEV.			
CONSTRUCTION COMPLETION DATE: YYYY MM DD			
NO.	REVISIONS	DATE	BY
2	ISSUED FOR BID OP. 1068-2014	15/01/23	JBC
1	ISSUED FOR ADDENDUM No. 1	14/06/24	JBC
0	ISSUED FOR TENDER	14/06/13	JBC

CH2MHILL

DESIGNED BY	KG	CHECKED BY	BW
DRAWN BY	JBC	APPROVED BY	BW
SCALE:		RELEASED FOR CONSTRUCTION	
HORIZONTAL	NTS		
VERTICAL	-		
DATE	2014 06 13	DATE	

ENGINEER'S SEAL

CONSULTANT DRAWING NUMBER
WX-P0001

THE CITY OF WINNIPEG
WATER AND WASTE DEPARTMENT
ENGINEERING DIVISION

CITY OF WINNIPEG WATER TREATMENT RESEARCH AND PROCESS OPTIMIZATION FACILITY

PROCESS
RAW WATER PUMPING
PROCESS AND INSTRUMENTATION DIAGRAM

SHEET X OF X
CITY DRAWING NUMBER
1-0601X-P0001-001-02