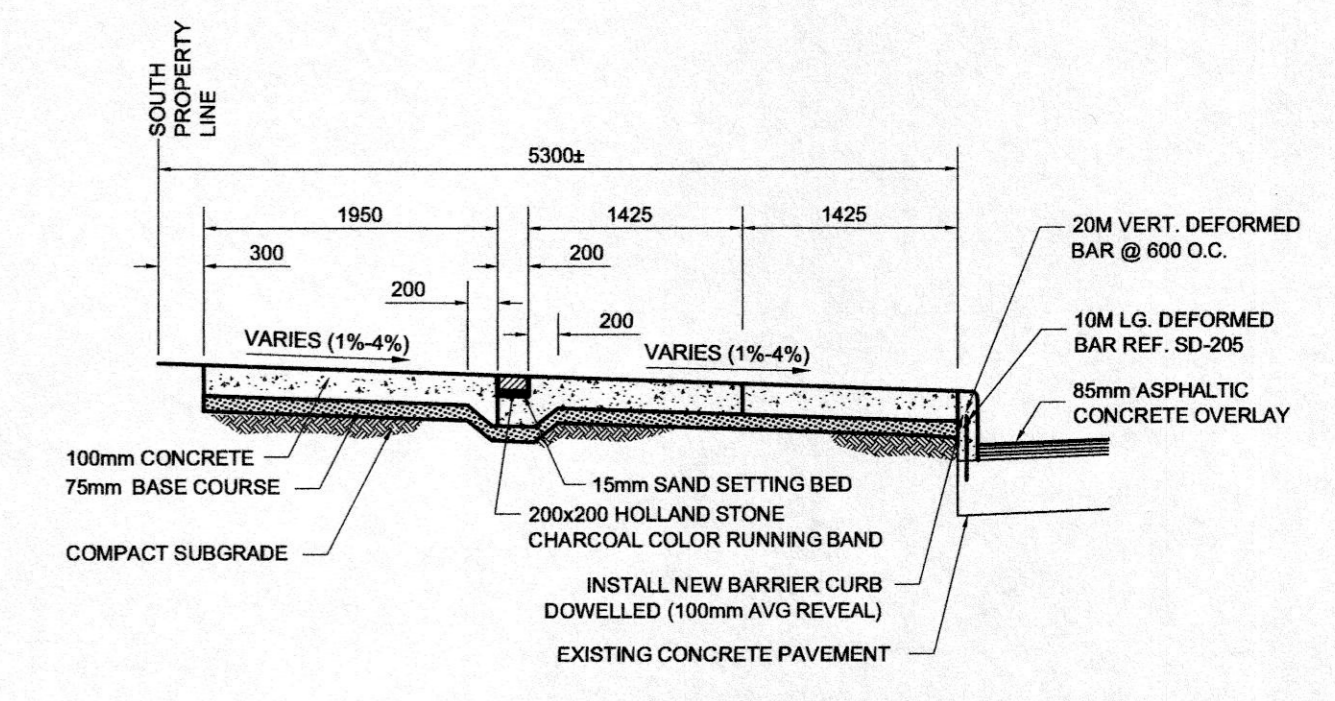


BUS STOP PAVING STONE DETAIL 2



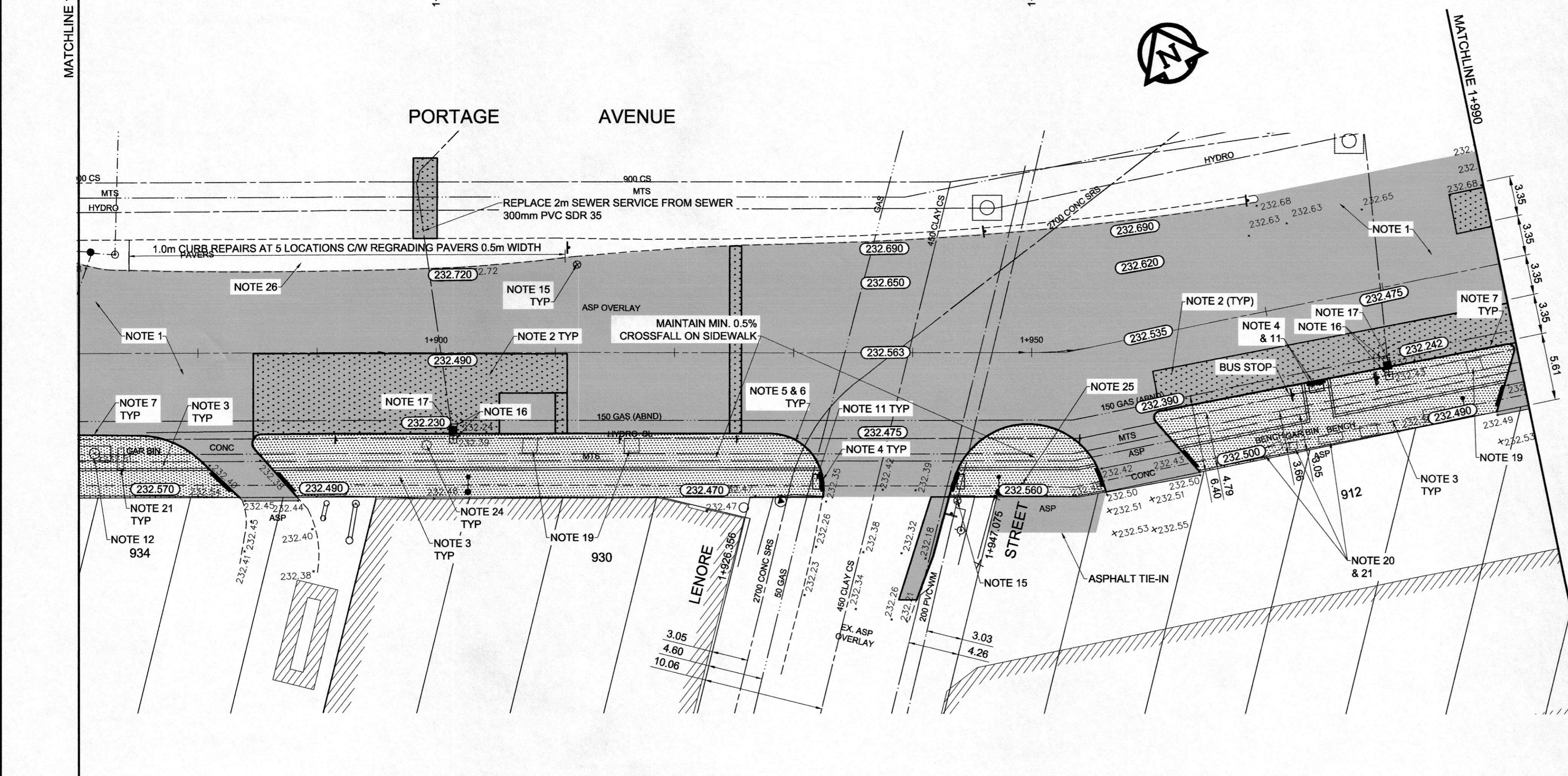
SIDEWALK DETAIL 1

REFERENCE NOTES

- A. PAVEMENT DIMENSIONS ARE TO BACK OF CURB
- B. BASELINE IS 12.0M NORTH OF SOUTH PROPERTY LINE
- C. PROPERTY LINES OBTAINED FROM THE CITY OF WINNIPEG L.B.I.S., AND NO SCALE FACTOR WAS APPLIED
- D. REFER TO AECOM FIELD BOOK NO. 4821, 4822 & 4823

CONSTRUCTION NOTES:

1. PAVEMENT OVERLAY TYPE 1A (AVERAGE THICKNESS 85mm)
2. REMOVE EXISTING ASPHALT AND CONSTRUCT NEW ASPHALTIC PAVEMENT OVERLAY TYPE 1A (AVERAGE THICKNESS 85mm)
3. REMOVE EXISTING PAVEMENT AND CONSTRUCT NEW 200mm REINFORCED CONCRETE PAVEMENT c/w 85mm TYPE 1A ASPHALT OVERLAY
4. REMOVE EXISTING CONCRETE SIDEWALK AND CONSTRUCT NEW 100mm SIDEWALK c/w PAVING STONE BAND (SEE DETAIL 1)
5. RENEW EXISTING MONOLITHIC CURB RAMP (10mm HT. INTEGRAL)
6. CONSTRUCT NEW MODIFIED BARRIER CURB (150mm AVG. HT. REVEAL SEPARATE)
7. REMOVE EXISTING BARRIER CURB
8. RENEW EXISTING BARRIER CURB (100mm AVG. HT. REVEAL)
9. ADJUST EXISTING CATCH BASIN/MANHOLE TO GRADE
10. REMOVE EXISTING FRAME AND COVER AND PLACE NEW FRAME AND COVER (AP-004 AND AP-005)
11. INSTALL NEW CAST IRON RISER RING
12. INSTALL NEW DETECTABLE SURFACE WARNING TILES
13. ADJUST MTS MANHOLE FRAME AND COVER
14. ADJUST SIGNALS SERVICE BOX
15. ADJUST EXISTING CURB STOP TO GRADE
16. INSTALL VALVE BOX EXTENTION
17. REMOVE EXISTING CATCHBASIN AND CURB INLET
18. INSTALL NEW CURB AND GUTTER INLET c/w CATCHBASIN (SD-024) AND CONNECT TO EXISTING LEAD
19. REGRADE EXISTING PAVING STONES
20. REMOVE EXISTING TREE WELL
21. REMOVE AND INSTALL EXISTING BENCH (BY OTHERS)
22. REMOVE AND INSTALL EXISTING GARBAGE BIN (BY OTHERS)
23. REMOVE AND INSTALL EXISTING BUS SHELTER (BY OTHERS)
24. INSTALL PAVING STONE (SEE DETAIL 2)
25. REMOVE AND REINSTALL CONC. PLANTERS (BY OTHERS)
26. ADJUST EXISTING VALVE BOX



EXISTING	LEGEND - PLAN	PROPOSED	EXISTING	LEGEND - PLAN	PROPOSED	EXISTING	LEGEND - PROFILE	PROPOSED
150 mm W.M.	WATERMAIN	150 mm W.M.	HYDRO	HYDRO	HYDRO	---	C PROFILE	---
⊕	HYDRANT	⊕	M.T.S.	M.T.S.	M.T.S.	---	SOUTH/EAST GUTTER	---
⊙	VALVE	⊙	CONCRETE	CONCRETE	CONCRETE	---	MEDIAN GUTTER	---
300mm L.D.S.	LAND DRAINAGE SEWER	300mm L.D.S.	ASPHALT	ASPHALT	ASPHALT	---	NW PROPERTY LINE	---
250mm W.W.S.	WASTEWATER SEWER	250mm W.W.S.	PROPERTY LINE	PROPERTY LINE	PROPERTY LINE	---	S/E PROPERTY LINE	---
○	MANHOLE	○	SURVEY BAR	SURVEY BAR	SURVEY BAR	---		
□	CATCH BASIN	□	ELEVATION	ELEVATION	ELEVATION	35.750		
▽	CURB INLET	▽	TREE	TREE	TREE	500ø		
////	BUILDING OUTLINE	////	SIDEWALK RAMP	SIDEWALK RAMP	SIDEWALK RAMP	---		
---	CULVERT	---	CONCRETE SIDEWALK	CONCRETE SIDEWALK	CONCRETE SIDEWALK	---		
---	GAS	---	FENCE	FENCE	FENCE	---		

**LOCATION APPROVED UNDERGROUND STRUCTURES**

SUPV. U/G STRUCTURES COMMITTEE DATE

**NOTE:**  
LOCATION OF UNDERGROUND STRUCTURES AS SHOWN ARE BASED ON THE BEST INFORMATION AVAILABLE. BUT NO GUARANTEE IS GIVEN THAT ALL EXISTING UTILITIES ARE SHOWN OR THAT THE GIVEN LOCATIONS ARE EXACT. CONFIRMATION OF EXISTENCE AND EXACT LOCATION OF ALL SERVICES MUST BE OBTAINED FROM THE INDIVIDUAL UTILITIES BEFORE PROCEEDING WITH CONSTRUCTION.

NO.	REVISIONS	DATE	BY
0	ISSUED FOR TENDER	11/27/2014	KWR

**AECOM**

DESIGNED BY: BC  
CHECKED BY: KWR

DRAWN BY: RT, PB  
APPROVED BY:

HOR. SCALE: 1:250  
VERTICAL: 1:10

RELEASED FOR CONSTRUCTION BY:

DATE: 2014/06/26

ENGINEER'S SEAL

PROVINCE OF MANITOBA

K.W. RAE

REGISTERED PROFESSIONAL ENGINEER

CONSULTANT DRAWING NO. CT-05

**METRIC**

WHOLE NUMBERS INDICATE MILLIMETRES  
DECIMALIZED NUMBERS INDICATE METRES

**THE CITY OF WINNIPEG**

PUBLIC WORKS DEPARTMENT

Winnipeg

PORTAGE AVENUE REHABILITATION:  
PART A- EASTBOUND FROM SHERBURN ST. TO MARYLAND ST.  
PART B- WESTBOUND FROM EMPRESS ST. TO MINTO ST.

PLAN / PROFILE PART A  
STATION 1+870 TO STATION 1+990

CITY DRAWING NUMBER P-3359-05  
SHEET 5 OF 21