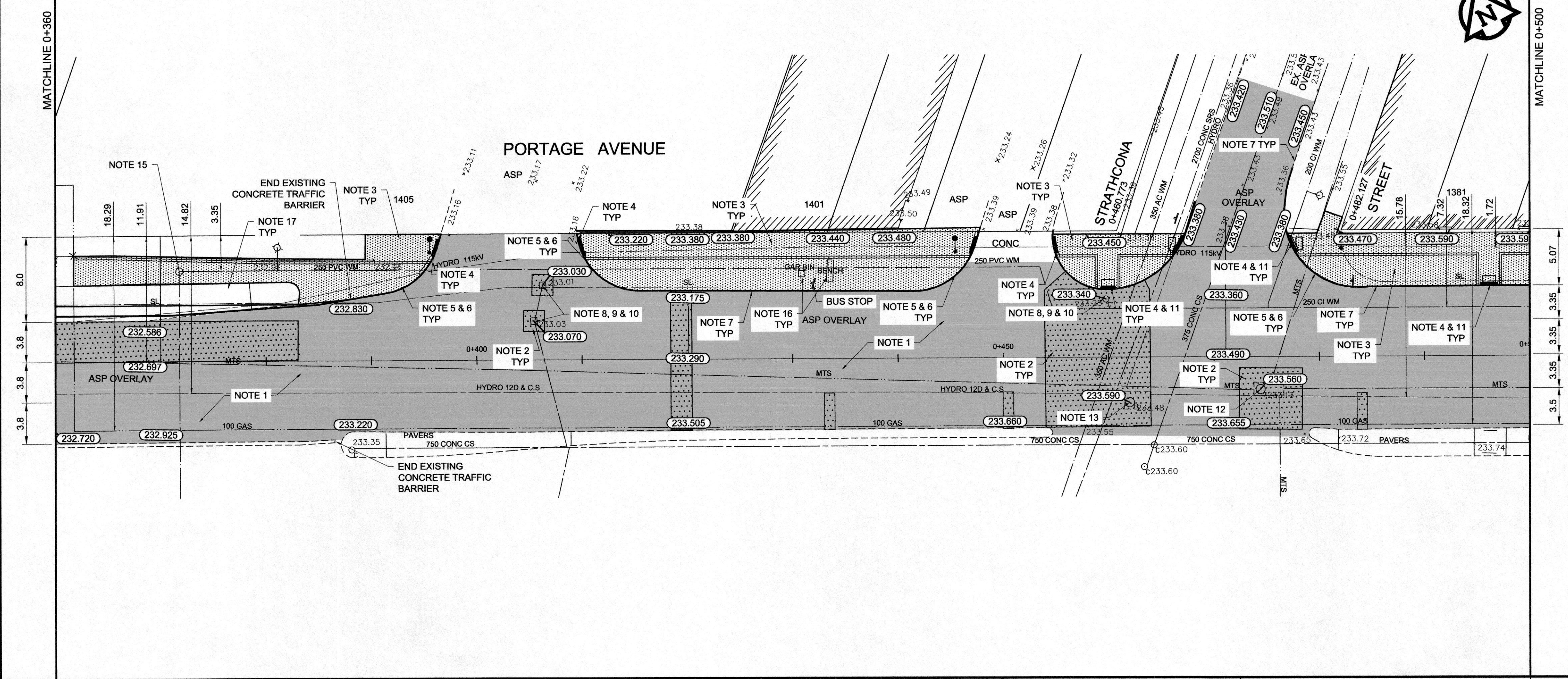


- REFERENCE NOTES**
- A. PAVEMENT DIMENSIONS ARE TO BACK OF CURB
 - B. BASELINE IS 12.0M SOUTH OF NORTH GUTTER
 - C. PROPERTY LINES OBTAINED FROM THE CITY OF WINNIPEG L.B.I.S., AND NO SCALE FACTOR WAS APPLIED
 - D. REFER TO AECOM FIELD BOOK NO. 4821, 4822 & 4823

- CONSTRUCTION NOTES:**
1. PLANE EXISTING ASPHALT AND CONSTRUCT NEW ASPHALTIC PAVEMENT OVERLAY TYPE 1A (AVERAGE THICKNESS 85mm)
 2. REMOVE EXISTING PAVEMENT AND CONSTRUCT NEW 200mm REINFORCED CONCRETE PAVEMENT c/w 85mm TYPE 1A ASPHALT OVERLAY
 3. REMOVE EXISTING CONCRETE SIDEWALK AND CONSTRUCT NEW 100mm SIDEWALK c/w PAVING STONE BAND (SEE DETAIL 1)
 4. RENEW EXISTING MONOLITHIC CURB RAMP (10mm HT. INTEGRAL)
 5. CONSTRUCT NEW MODIFIED BARRIER CURB (150mm AVG. HT. REVEAL SEPARATE)
 6. REMOVE EXISTING BARRIER CURB
 7. RENEW EXISTING BARRIER CURB (100mm AVG. HT. REVEAL)
 8. ADJUST EXISTING CATCH BASIN/MANHOLE TO GRADE
 9. REMOVE EXISTING FRAME AND COVER AND PLACE NEW FRAME AND COVER (AP-004 AND AP-005)
 10. INSTALL NEW CAST IRON RISER RING
 11. INSTALL NEW DETECTABLE SURFACE WARNING TILES
 12. REMOVE AND INSTALL NEW MTS MANHOLE FRAME AND COVER c/w 50mm CAST IRON RISER RING
 13. ADJUST EXISTING HYDRO MANHOLE (BY OTHERS)
 14. ADJUST EXISTING CURB STOP TO GRADE
 15. ADJUST EXISTING VALVE BOX
 16. REMOVE EXISTING GARBAGE BIN AND/OR BENCH (BY OTHERS) BENCHMARK ADVERTISING
 17. PLACE LANDSCAPING MULCH c/w WEED BARRIER



EXISTING	LEGEND - PLAN	PROPOSED	EXISTING	LEGEND - PLAN	PROPOSED	EXISTING	LEGEND - PROFILE	PROPOSED
150 mm W.M.	WATERMAIN HYDRANT	150 mm W.M.	HYDRO M.T.S.	CONCRETE	CONCRETE	---	C PROFILE	---
300mm L.D.S.	VALVE	300mm L.D.S.	ASPHALT	ASPHALT	ASPHALT	---	NORTH/WEST GUTTER	---
250mm W.W.S.	LAND DRAINAGE SEWER	250mm W.W.S.	PROPERTY LINE	PROPERTY LINE	PROPERTY LINE	---	MEDIAN GUTTER	---
250mm W.W.S.	WASTEWATER SEWER	250mm W.W.S.	SURVEY BAR	SURVEY BAR	SURVEY BAR	---	N/W PROPERTY LINE	---
---	MANHOLE	---	ELEVATION	ELEVATION	ELEVATION	---	S/E PROPERTY LINE	---
---	CATCH BASIN	---	TREE	TREE	TREE	---	---	---
---	CURB INLET	---	SIDEWALK RAMP	SIDEWALK RAMP	SIDEWALK RAMP	---	---	---
---	JUNCTIONS	---	CONCRETE SIDEWALK	CONCRETE SIDEWALK	CONCRETE SIDEWALK	---	---	---
---	CULVERT	---	FENCE	FENCE	FENCE	---	---	---
---	GAS	---	---	---	---	---	---	---

LOCATION APPROVED UNDERGROUND STRUCTURES

SUPV. U/G STRUCTURES COMMITTEE DATE

NOTE:
LOCATION OF UNDERGROUND STRUCTURES AS SHOWN ARE BASED ON THE BEST INFORMATION AVAILABLE. BUT NO GUARANTEE IS GIVEN THAT ALL EXISTING UTILITIES ARE SHOWN OR THAT THE GIVEN LOCATIONS ARE EXACT. CONFIRMATION OF EXISTENCE AND EXACT LOCATION OF ALL SERVICES MUST BE OBTAINED FROM THE INDIVIDUAL UTILITIES BEFORE PROCEEDING WITH CONSTRUCTION.

B.M. 89R581 ELEV. 232.540 S.W. corner Portage Ave. & Sprague St., Tbl. on pipe, 4.8m E. of W.L. Sprague St. produced from the W. along the S.L. of Portage Ave.

AECOM

DESIGNED BY: BC CHECKED BY: KWR
 DRAWN BY: RT, PB APPROVED BY: [Signature]
 HOR. SCALE: 1:250
 VERTICAL: 1:10
 RELEASED FOR CONSTRUCTION BY: [Signature]

0 ISSUED FOR TENDER 11/27/2014 KWR
 NO. REVISIONS DATE BY DATE 2014/06/26

METRIC
WHOLE NUMBERS INDICATE MILLIMETRES
DECIMALIZED NUMBERS INDICATE METRES

THE CITY OF WINNIPEG
PUBLIC WORKS DEPARTMENT
ENGINEERING DIVISION

PORTAGE AVENUE REHABILITATION:
PART A- EASTBOUND FROM SHERBURN ST. TO MARYLAND ST.
PART B- WESTBOUND FROM EMPRESS ST. TO MINTO ST.

CITY DRAWING NUMBER P-3356-04
SHEET 15 OF 21

PLAN / PROFILE PART B
STATION 0+360 TO STATION 0+500

CONSULTANT DRAWING NO. CT-15

