

- REFERENCE NOTES**
- PAVEMENT DIMENSIONS ARE TO BACK OF CURB
  - BASELINE IS 12.0M SOUTH OF NORTH GUTTER
  - PROPERTY LINES OBTAINED FROM THE CITY OF WINNIPEG L.B.I.S., AND NO SCALE FACTOR WAS APPLIED
  - REFER TO AECOM FIELD BOOK NO. 4821, 4822 & 4823

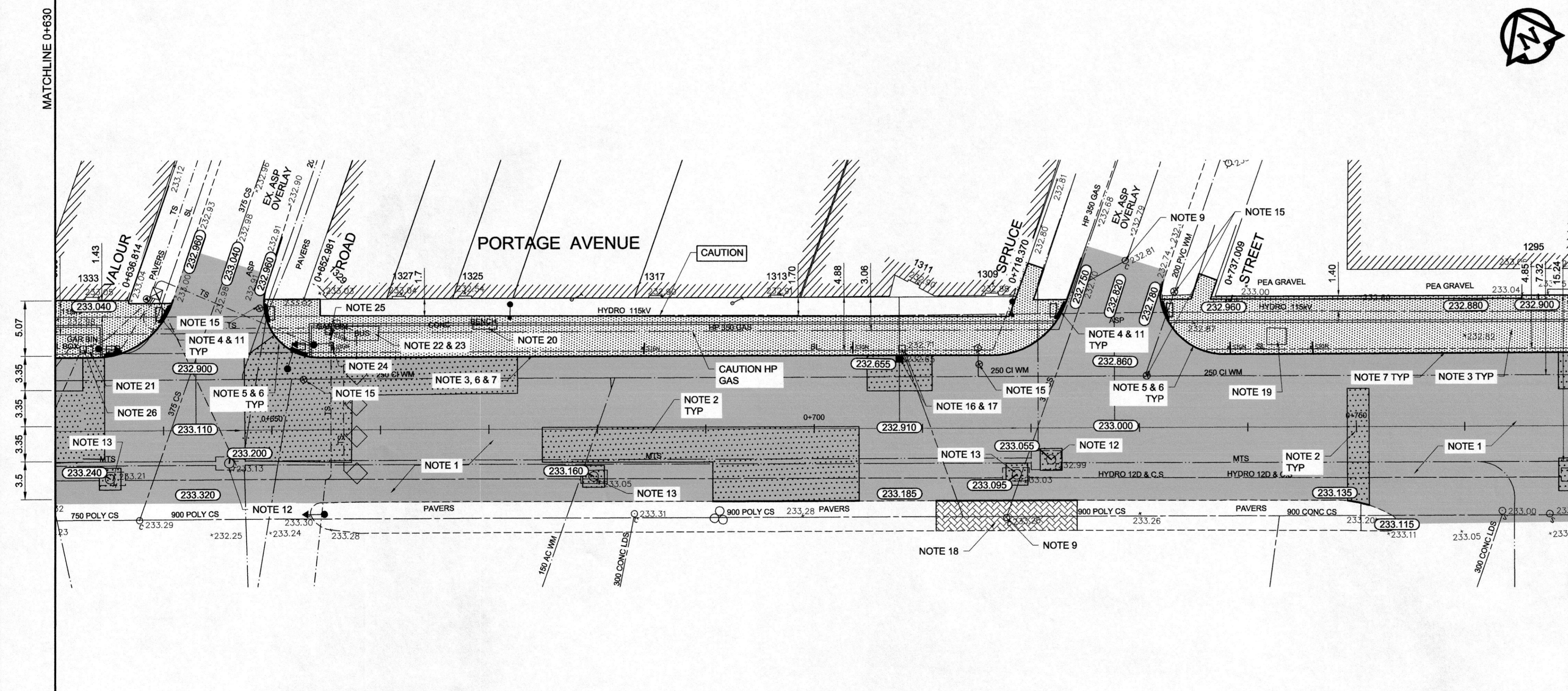
- CONSTRUCTION NOTES:**
- PLANE EXISTING ASPHALT AND CONSTRUCT NEW ASPHALTIC PAVEMENT OVERLAY TYPE 1A (AVERAGE THICKNESS 85mm)
  - REMOVE EXISTING PAVEMENT AND CONSTRUCT NEW 200mm REINFORCED CONCRETE PAVEMENT c/w 85mm TYPE 1A ASPHALTIC OVERLAY
  - REMOVE EXISTING CONCRETE SIDEWALK AND CONSTRUCT NEW 100mm SIDEWALK c/w PAVING STONE BAND (SEE DETAIL 1)
  - RENEW EXISTING MONOLITHIC CURB RAMP (10mm HT. INTEGRAL)
  - CONSTRUCT NEW MODIFIED BARRIER CURB (150mm AVG. HT. REVEAL SEPARATE)
  - REMOVE EXISTING BARRIER CURB
  - RENEW EXISTING BARRIER CURB (100mm AVG. HT. REVEAL)
  - ADJUST EXISTING CATCH BASIN/MANHOLE TO GRADE
  - REMOVE EXISTING FRAME AND COVER AND PLACE NEW FRAME AND COVER (AP-004 AND AP-005)
  - INSTALL NEW CAST IRON RISER RING
  - INSTALL NEW DETECTABLE SURFACE WARNING TILES
  - REBUILD MTS MANHOLE (BY MTS)
  - ADJUST EXISTING HYDRO MANHOLE (BY OTHERS)
  - ADJUST EXISTING CURB STOP TO GRADE
  - INSTALL VALVE BOX EXTENSION
  - REMOVE EXISTING CATCHBASIN AND CURB INLET
  - INSTALL NEW CURB AND GUTTER INLET c/w CATCHBASIN (SD-024 - 1800mm) AND CONNECT TO EXISTING LEAD
  - REGRADE EXISTING PAVING STONES
  - REMOVE EXISTING TREE WELL
  - REMOVE AND RE-INSTALL EXISTING BENCH (BY OTHERS)
  - REMOVE AND RE-INSTALL EXISTING GARBAGE BIN (BY OTHERS)
  - REMOVE AND RE-INSTALL EXISTING BUS SHELTER (BY OTHERS)
  - INSTALL PAVING STONE (SEE DETAIL 2)
  - REMOVE AND REPLACE TRANSIT INFORMATION POST BASE (BY OTHERS) TRANSIT
  - REMOVE AND REPLACE SPECIALTY TRANSIT STOP SIGN POST (BY OTHERS)
  - REMOVE AND REPLACE CANADA POST BOX (BY OTHERS)

CONTACT FOR TRANSIT  
Mr. Trevor Blue  
(204) 986-3821

\* REPLACE MONOLITHIC TRANSIT INFO POST BASE.  
CONTACT TRANSIT FOR NEW BASE



**METRIC**  
WHOLE NUMBERS INDICATE MILLIMETRES  
DECIMALIZED NUMBERS INDICATE METRES



EXISTING	LEGEND - PLAN	PROPOSED	EXISTING	LEGEND - PLAN	PROPOSED	EXISTING	LEGEND - PROFILE	PROPOSED
150mm W.M.	WATERMAIN	150mm W.M.	HYDRO	---	---	---	C PROFILE	---
300mm L.D.S.	LAND DRAINAGE SEWER	300mm L.D.S.	M.T.S.	---	---	---	NORTH/WEST GUTTER	---
250mm W.W.S.	WASTEWATER SEWER	250mm W.W.S.	CONCRETE	---	---	---	MEDIAN GUTTER	---
○	MANHOLE	○	ASPHALT	---	---	---	N/W PROPERTY LINE	---
□	CATCH BASIN	□	PROPERTY LINE	---	---	---	S/E PROPERTY LINE	---
▽	CURB INLET	▽	SURVEY BAR	---	---	---		
+	JUNCTIONS	+	ELEVATION	---	---	---		
—	CULVERT	—	TREE	---	---	---		
—	GAS	—	SIDEWALK RAMP	---	---	---		
			CONCRETE SIDEWALK	---	---	---		
			FENCE	---	---	---		

**LOCATION APPROVED UNDERGROUND STRUCTURES**

SUPV. U/G STRUCTURES COMMITTEE DATE

**NOTE:**  
LOCATION OF UNDERGROUND STRUCTURES AS SHOWN ARE BASED ON THE BEST INFORMATION AVAILABLE. BUT NO GUARANTEE IS GIVEN THAT THE GIVEN LOCATIONS ARE EXACT. CONFIRMATION OF EXISTENCE AND EXACT LOCATION OF ALL SERVICES MUST BE OBTAINED FROM THE INDIVIDUAL UTILITIES BEFORE PROCEEDING WITH CONSTRUCTION.

B.M. 89R581  
ELEV. 232.540

S.W. corner Portage Ave. & Sprague St., Tbt. on pipe, 4.8m E. of W.L. Sprague St. produced from the W. along the S.L. of Portage Ave.

**AECOM**

DESIGNED BY BC CHECKED BY KWR

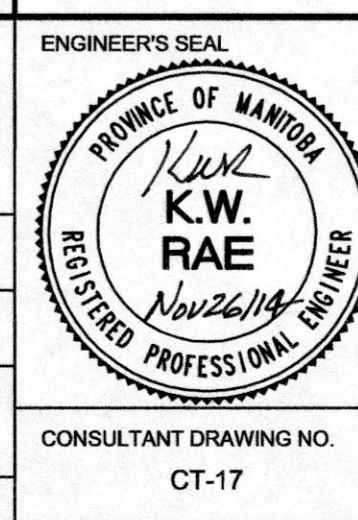
DRAWN BY RT, PB APPROVED BY

HOR. SCALE: 1:250  
VERTICAL: 1:10

RELEASED FOR CONSTRUCTION BY:

ISSUED FOR TENDER 11/27/2014 KWR

NO. REVISIONS DATE BY DATE 2014/06/26



**THE CITY OF WINNIPEG**  
PUBLIC WORKS DEPARTMENT  
ENGINEERING DIVISION

PORTAGE AVENUE REHABILITATION:  
PART A- EASTBOUND FROM SHERBURN ST. TO MARYLAND ST.  
PART B- WESTBOUND FROM EMPRESS ST. TO MINTO ST.

PLAN / PROFILE PART B  
STATION 0+630 TO STATION 0+770

CITY DRAWING NUMBER P-3356-06  
SHEET 17 OF 21

CONSULTANT DRAWING NO. CT-17