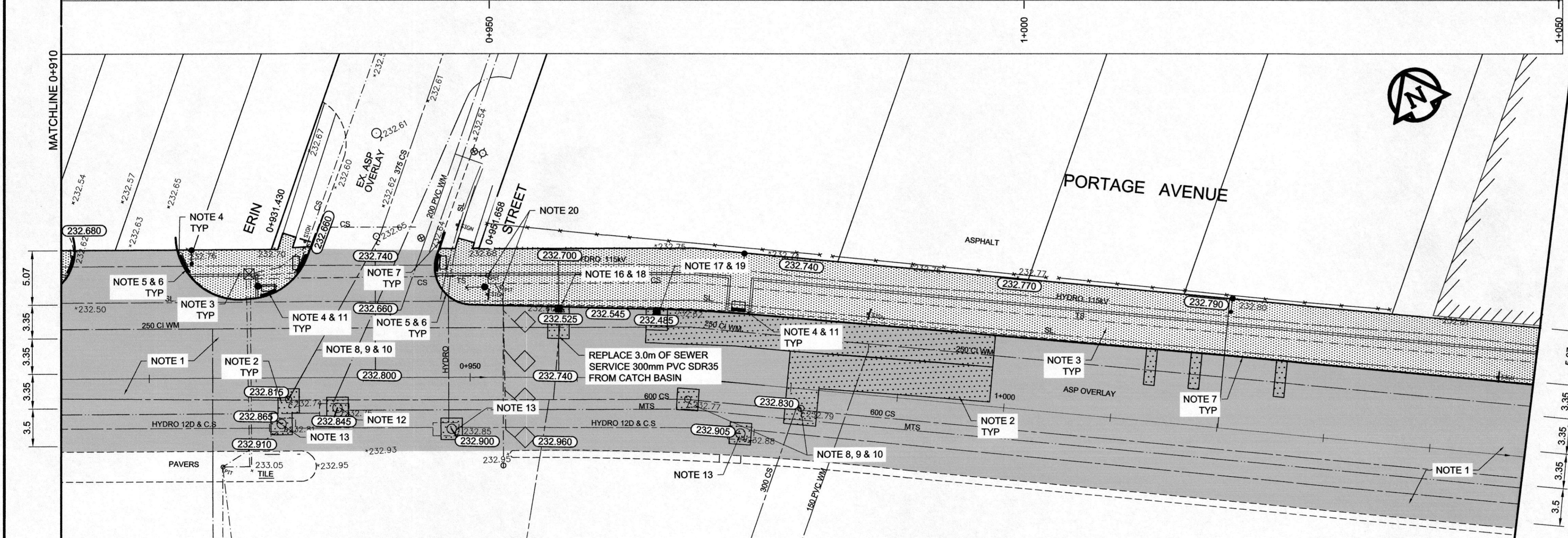


TYPICAL CROSS SECTION



REFERENCE NOTES

- A. PAVEMENT DIMENSIONS ARE TO BACK OF CURB
- B. BASELINE IS 12.0M SOUTH OF NORTH GUTTER
- C. PROPERTY LINES OBTAINED FROM THE CITY OF WINNIPEG L.B.I.S., AND NO SCALE FACTOR WAS APPLIED
- D. REFER TO AECOM FIELD BOOK NO. 4821, 4822 & 4823

CONSTRUCTION NOTES:

1. PLANE EXISTING ASPHALT AND CONSTRUCT NEW ASPHALTIC PAVEMENT OVERLAY TYPE 1A (AVERAGE THICKNESS 85mm)
2. REMOVE EXISTING PAVEMENT AND CONSTRUCT NEW 200mm REINFORCED CONCRETE PAVEMENT c/w 85mm TYPE 1A ASPHALT OVERLAY
3. REMOVE EXISTING CONCRETE SIDEWALK AND CONSTRUCT NEW 100mm SIDEWALK c/w PAVING STONE BAND (SEE DETAIL 1)
4. RENEW MONOLITHIC CURB RAMP (10mm HT. INTEGRAL)
5. CONSTRUCT NEW MODIFIED BARRIER CURB (150mm AVG. HT. SEPARATE)
6. REMOVE EXISTING BARRIER CURB
7. RENEW BARRIER CURB (100mm AVG. HT. REVEAL)
8. ADJUST EXISTING CATCH BASIN/MANHOLE TO GRADE
9. REMOVE EXISTING FRAME AND COVER AND PLACE NEW FRAME AND COVER (AP-004 AND AP-005)
10. INSTALL NEW CAST IRON RISER RING
11. INSTALL NEW DETECTABLE SURFACE WARNING TILES
12. ADJUST MTS MANHOLE FRAME AND COVER c/w 50mm CAST IRON RISER RING
13. ADJUST EXISTING HYDRO MANHOLE (BY OTHERS)
14. ADJUST EXISTING CURB STOP TO GRADE
15. INSTALL NEW VALVE BOX EXTENSION
16. REMOVE EXISTING CATCHBASIN AND CURB INLET
17. REMOVE EXISTING CURB INLET BOX
18. INSTALL NEW CURB AND GUTTER INLET c/w CATCHBASIN (SD-024 - 1800mm) AND CONNECT TO EXISTING LEAD
19. INSTALL NEW CURB AND GUTTER INLET c/w CATCHBASIN (SD-024 - 1200mm) AND CONNECT TO EXISTING LEAD
20. ADJUST SIGNAL SERVICE BOX FRAME AND COVER

METRIC  
WHOLE NUMBERS INDICATE MILLIMETRES  
DECIMALIZED NUMBERS INDICATE METRES



EXISTING	LEGEND - PLAN	PROPOSED	EXISTING	LEGEND - PLAN	PROPOSED	EXISTING	LEGEND - PROFILE	PROPOSED
150 mm W.M.	WATERMAIN	150 mm W.M.	HYDRO	HYDRO	HYDRO	— X —	C PROFILE	— X —
300mm L.D.S.	LAND DRAINAGE SEWER	300mm L.D.S.	CONCRETE	CONCRETE	CONCRETE	— □ —	NORTHWEST GUTTER	— □ —
250mm W.W.S.	WASTEWATER SEWER	250mm W.W.S.	ASPHALT	ASPHALT	ASPHALT	— ▨ —	MEDIAN GUTTER	— ▨ —
○	MANHOLE	○	PROPERTY LINE	PROPERTY LINE	PROPERTY LINE	— ◇ —	N/W PROPERTY LINE	— ◇ —
□	CATCH BASIN	□	SURVEY BAR	SURVEY BAR	SURVEY BAR	— ○ —	S/E PROPERTY LINE	— ○ —
▽	CURB INLET	▽	ELEVATION	ELEVATION	ELEVATION			
+	JUNCTIONS	+	TREE	TREE	TREE			
—	CULVERT	—	SIDEWALK RAMP	SIDEWALK RAMP	SIDEWALK RAMP			
—	GAS	—	CONCRETE SIDEWALK	CONCRETE SIDEWALK	CONCRETE SIDEWALK			
			FENCE	FENCE	FENCE			

LOCATION APPROVED UNDERGROUND STRUCTURES

SUPV. U/G STRUCTURES COMMITTEE DATE

NOTE:  
LOCATION OF UNDERGROUND STRUCTURES AS SHOWN ARE BASED ON THE BEST INFORMATION AVAILABLE. BUT NO GUARANTEE IS GIVEN THAT THE GIVEN LOCATIONS ARE EXACT. CONFIRMATION OF EXISTENCE AND EXACT LOCATION OF ALL SERVICES MUST BE OBTAINED FROM THE INDIVIDUAL UTILITIES BEFORE PROCEEDING WITH CONSTRUCTION.

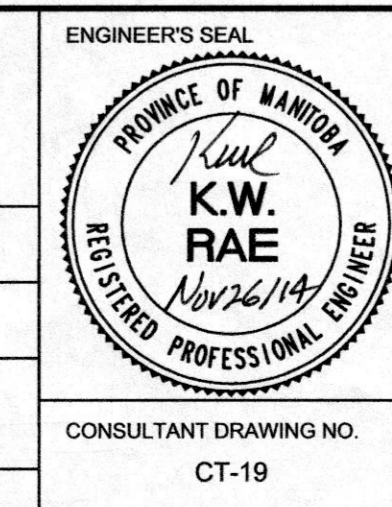
B.M. 89R581  
ELEV. 232.540

S.W. corner Portage Ave. & Sprague St. Tbt. on pipe, 4.8m E. of W.L. Sprague St. produced from the W. along the S.L. of Portage Ave.

DESIGNED BY BC  
DRAWN BY RT, PB  
HOR. SCALE: 1:250  
VERTICAL: 1:10

CHECKED BY KWR  
APPROVED BY  
RELEASED FOR CONSTRUCTION BY:

0 ISSUED FOR TENDER 11/27/2014 KWR  
NO. REVISIONS DATE BY



THE CITY OF WINNIPEG  
PUBLIC WORKS DEPARTMENT  
ENGINEERING DIVISION

PORTAGE AVENUE REHABILITATION:  
PART A- EASTBOUND FROM SHERBURN ST. TO MARYLAND ST.  
PART B- WESTBOUND FROM EMPRESS ST. TO MINTO ST.

PLAN / PROFILE PART B  
STATION 0+910 TO STATION 1+050

CITY DRAWING NUMBER  
P-3356-08  
SHEET 19 OF 21

CONSULTANT DRAWING NO.  
CT-19