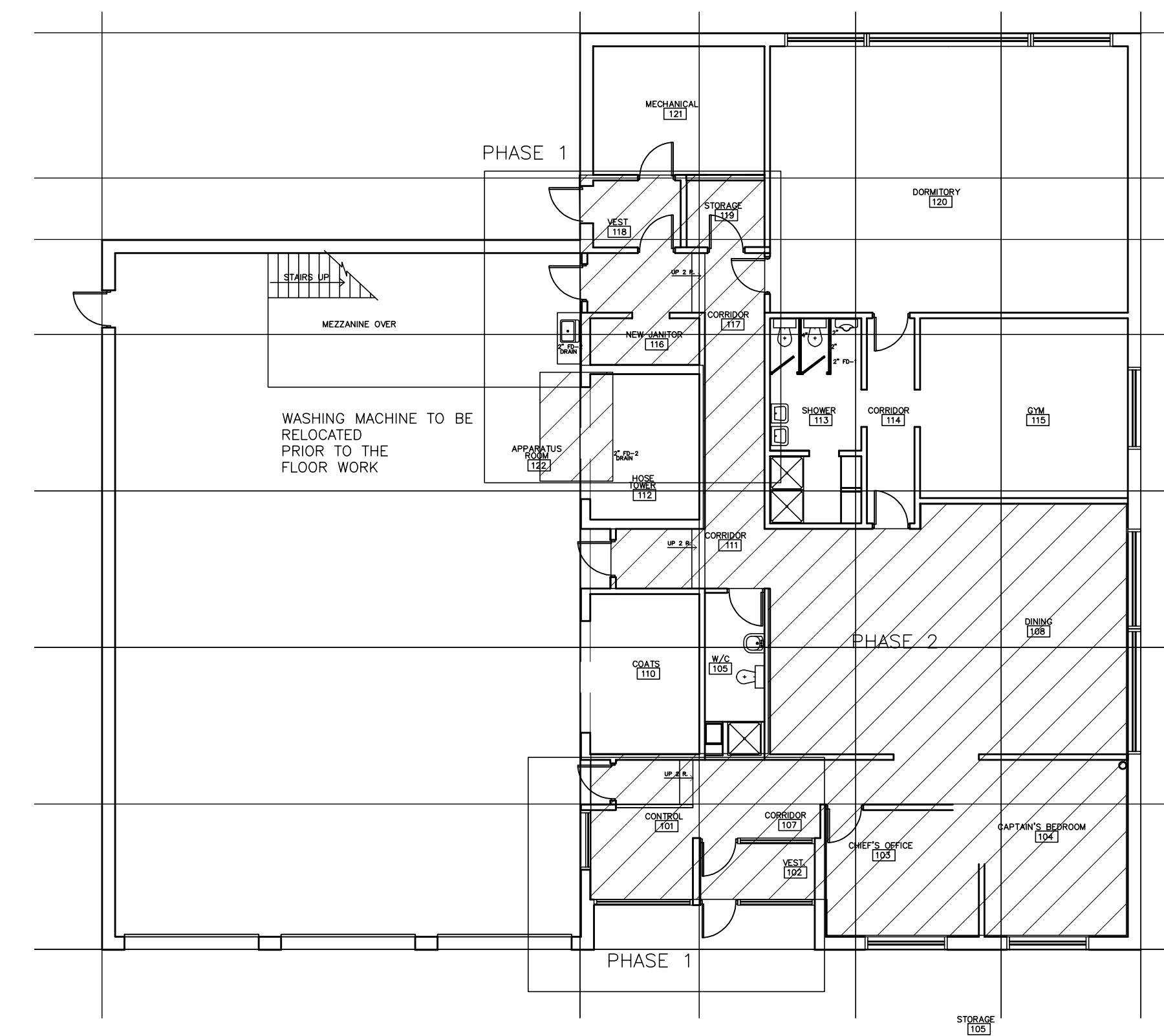


DEMOLITION PLAN



PROJECT SCOPE AREA HATCHED

DRAWING INDEX

- INTERIOR DESIGN
- A1 DEMOLITION PLAN, SITE PLAN, KEY PLAN
- A2 FLOOR PLAN
- A3 POWER/DATA LAYOUT
- A4 DEMOLITION REFLECTED CEILING PLAN
- A5 MILLWORK ELEVATIONS NOTES
- A6 FINISH PLAN, MATERIAL LIST

- MECHANICAL
- M1.0 MECHANICAL LEGEND & DRAWING LIST
- M2.0 MECHANICAL PLUMBING & HVAC DEMOLITION PLAN
- M3.0 MECHANICAL PLUMBING & HVAC NEW PLANS
- M4.0 MECHANICAL SPECIFICATIONS

- ELECTRICAL
- E1 DEMOLITION
- E2 ELECTRICAL POWER & SYSTEM PLAN, LIGHTING PLAN
- E3 SPECIFICATIONS

NO.	DATE	DESCRIPTION	BY
0	JULY 2014	TENDER	M.G.

PRINTING DATE

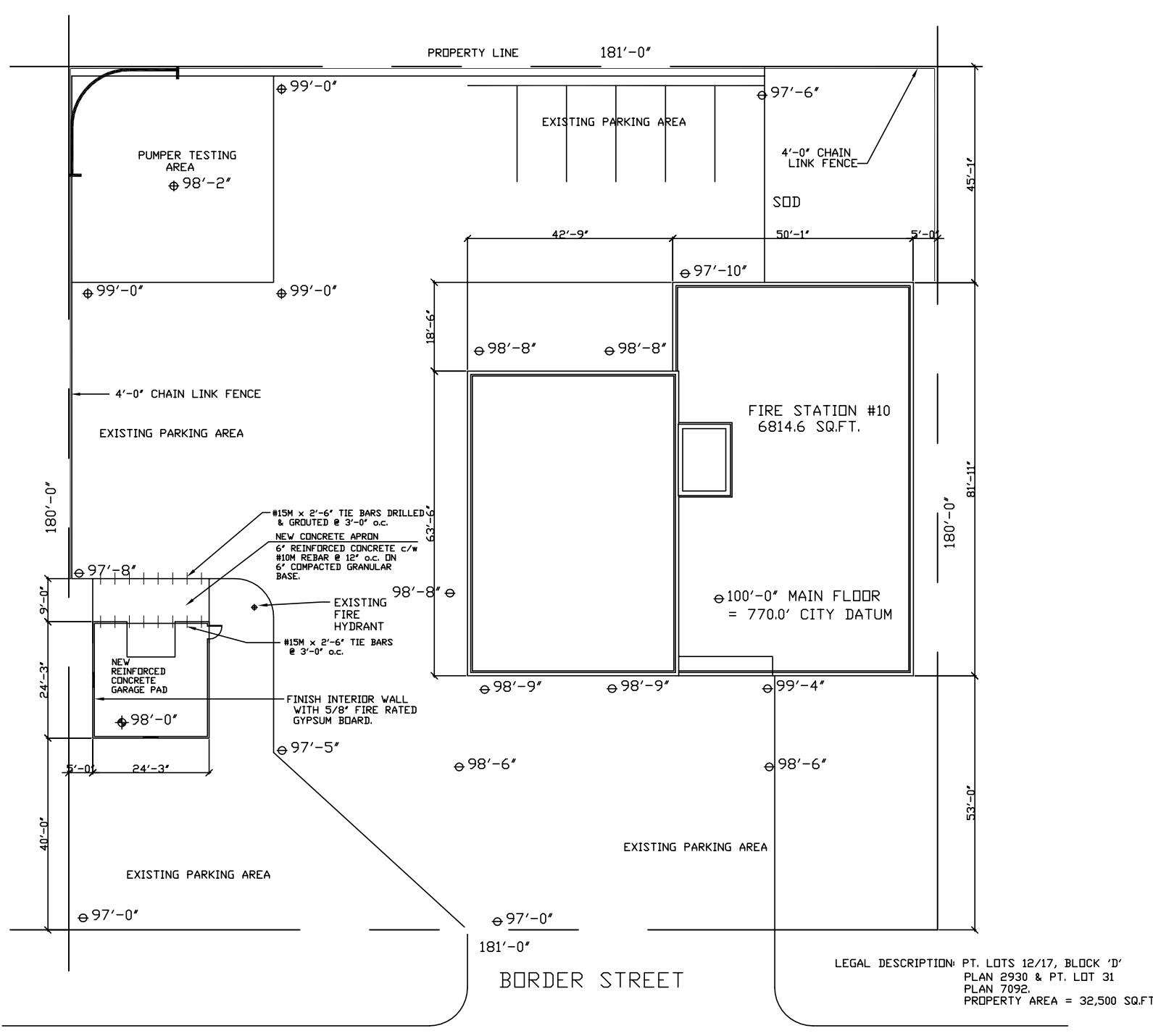
DRAWINGS & SPECIFICATIONS, AS INSTRUMENTS OF SERVICE ARE THE PROPERTY OF THE CITY OF WINNIPEG. THE COPYRIGHT IN THE SAME BEING RESERVED TO THEM. NO REPRODUCTION MAY BE MADE WITHOUT THE PERMISSION OF THE CITY OF WINNIPEG. ALL PRINTS TO BE RETURNED. THE CONTRACTOR IS TO VERIFY DIMENSIONS & DATA NOTED HEREIN WITH CONDITIONS ON THE SITE & IS HELD RESPONSIBLE FOR REPORTING ANY DISCREPANCY FOR ADJUSTMENT.



**SYNERGY INTERIOR DESIGN INC**  
 13 Rosewarne, Avenue WINNIPEG, MB Canada R2M 0V8  
 204 233 9159  
 malvine@synergyinteriors.com

DATE MARCH 2013 SCALE 1/4" = 1'-0" REVISIONS  
 DRAWN BY M.G. CHECKED BY

STATION 10, 1354 BORDER ST. WINNIPEG,  
 CITY OF WINNIPEG



SITE PLAN

1119-2014-DEMOLITION, SITE PLAN, KEY PLAN A1-RO