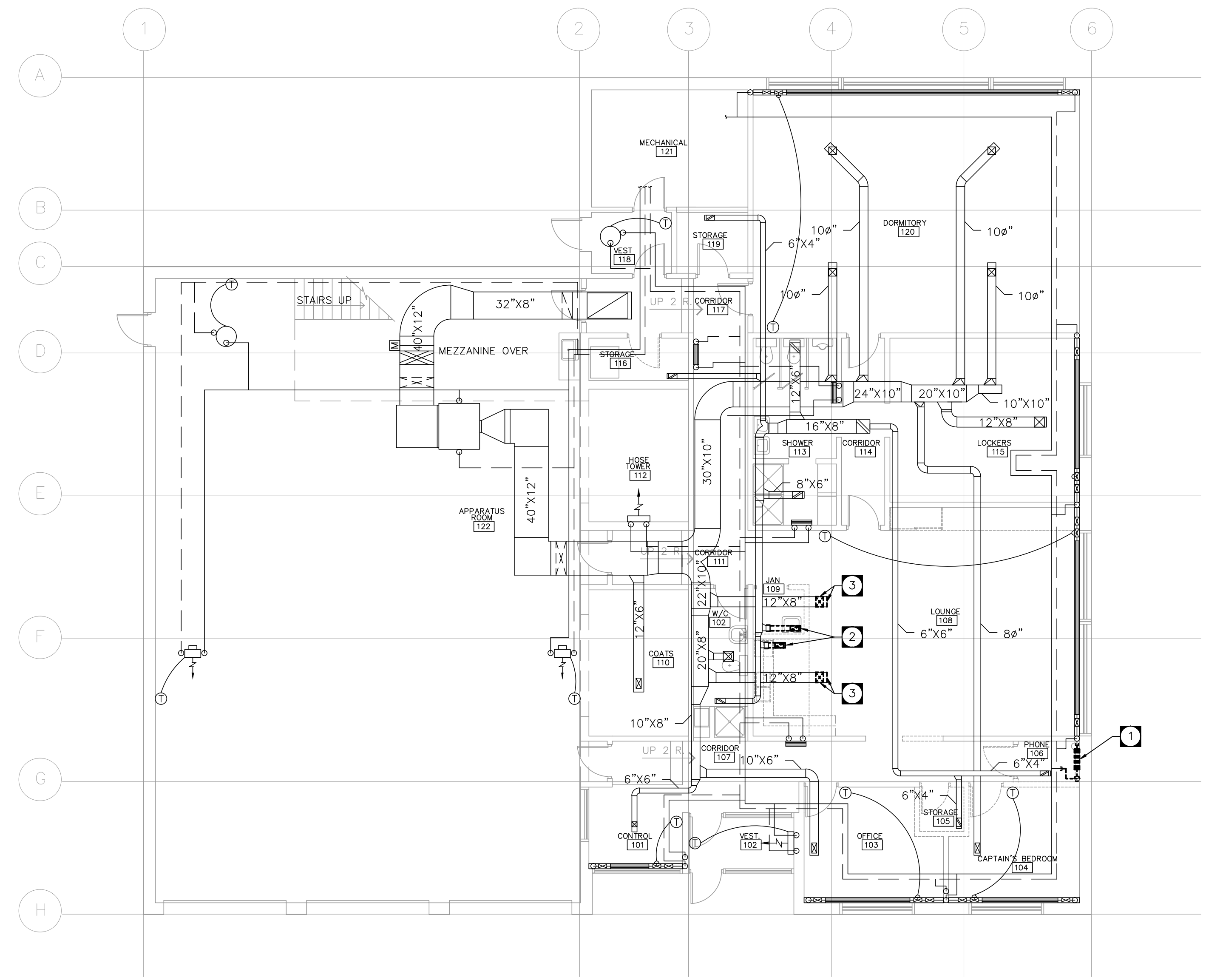


MAIN FLOOR PLAN - DEMO PLUMBING
SCALE: 1/8" = 1'-0"

PLUMBING DRAWING NOTES:

- 1 DISCONNECT EXISTING WATER METER AND INCOMING DCW SERVICE THAT ARE TO BE RELOCATED. ABANDON EXISTING 2" INCOMING DCW SERVICE RISER FROM UNDER SLAB TO METER.
- 2 REMOVE EXISTING 2" DCW FROM METER INTO CEILING SPACE. DCW TO BE RECONNECTED.
- 3 REMOVE EXISTING DCW & DHW HOSE BIBS, AND ASSOCIATED PIPING. DCW & DHW DISTRIBUTION TO BE REUSED.
- 4 REMOVE EXISTING 1-1/2" DCW IN CEILING SPACE. DCW TO BE RECONNECTED.
- 5 DISCONNECT AND REMOVE EXISTING KITCHEN SINK. PLUMBING TO BE REUSED.
- 6 DISCONNECT AND REMOVE EXISTING MOP SINK. PLUMBING TO BE REMOVED AND CAPPED OFF AS REQUIRED.
- 7 DISCONNECT AND RELOCATE EXISTING HOSE FITTING, VALVE, AND VACUUM BREAKER.
- 8 DISCONNECT AND RELOCATE EXISTING HOSE REEL.
- 9 DISCONNECT AND RELOCATE EXISTING COMMERCIAL WASHING MACHINE INCLUDING ALL HARDWARE AND SUPPORT STAND.
- 10 DISCONNECT AND RELOCATE EXISTING DISHWASHER. PLUMBING TO BE REUSED.
- 11 ABANDON EXISTING 2" INCOMING WATER SERVICE FROM METER UNDER SLAB TO ENTERING AT EXTERIOR.



MAIN FLOOR PLAN - DEMO HVAC
SCALE: 1/8" = 1'-0"

HVAC DRAWING NOTES:

- 1 REMOVE EXISTING CONVECTION HEATER AND CAP OFF HEATING LINES AS REQUIRED.
- 2 REMOVE EXISTING E/A GRILLES AND CAP OFF ASSOCIATED DUCTS IN CEILING SPACE.
- 3 REMOVE EXISTING S/A DIFFUSERS AND END CAP ON DUCT. CAP OFF DIFFUSER TAKEOFF. DUCT TO BE REUSED AND EXTENDED.

TOWER PROJECT NUMBER: 12431

TOWER ENGINEERING GROUP
1-1140 WAVERLEY STREET WINNIPEG, MB R3T 0P4
TEL: 204-925-1150 FAX: 204-925-1155
towereng@towereng.ca www.towereng.ca
• WINNIPEG • CALGARY • CAMBRIDGE

NO.	DATE	DESCRIPTION	BY
6	NOV 27, 2015	ISSUED FOR REVIEW	MH
5	FEB 18, 2015	ISSUED FOR REVIEW	LJR
4	FEB 2, 2015	ISSUED FOR REVIEW	LJR
3	JAN 9, 2015	ISSUED FOR REVIEW	LJR
2	APRIL 9, 2013	ISSUED FOR REVIEW	LJR
1	APRIL 3, 2013	ISSUED FOR REVIEW	LJR

DRAWN BY LJR
PRINTING DATE MARCH 2013

Drawings and specifications, as instruments of service are the property of the city, the copyright in the same being reserved to them. No reproduction may be made without the permission of the city, and all prints to be returned. The contractor is to verify dimensions and data noted herein with conditions on the site and is held responsible for reporting any discrepancy to the designer for adjustment.



SYNERGY INTERIOR DESIGN INC
13 Rosewarne Avenue WINNIPEG, MB Canada R2M 0V8
204 233 9159
malvine@synergyinteriors.com

DATE MARCH 2013 SCALE AS NOTED REVISIONS 1
DRAWN BY LJR CHECKED BY LJR

STATION 10, 1354 BORDER ST. WINNIPEG, MB.
CITY OF WINNIPEG