

ASSEMBLY DETAILS
1:10

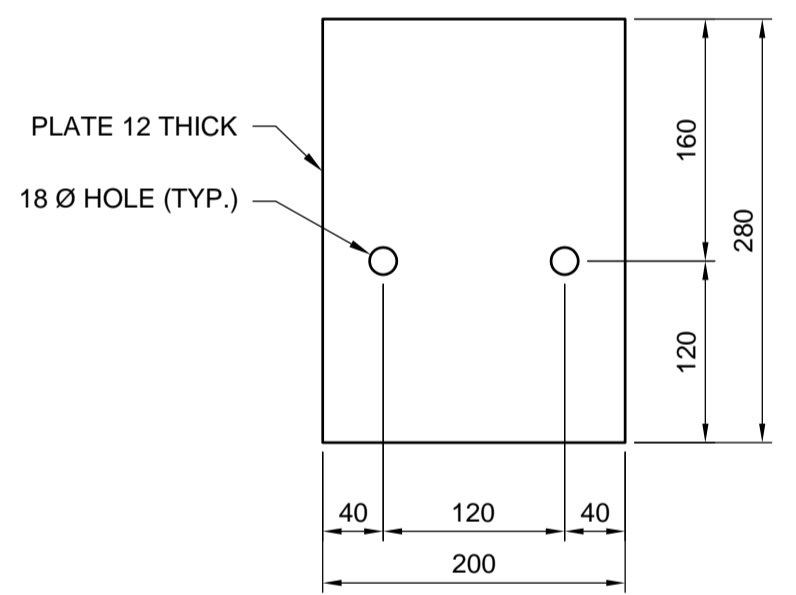


PLATE "A"

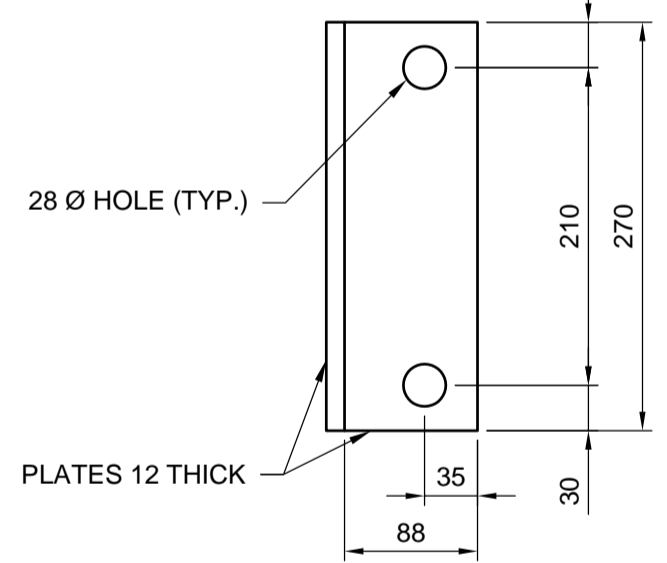


PLATE "B"

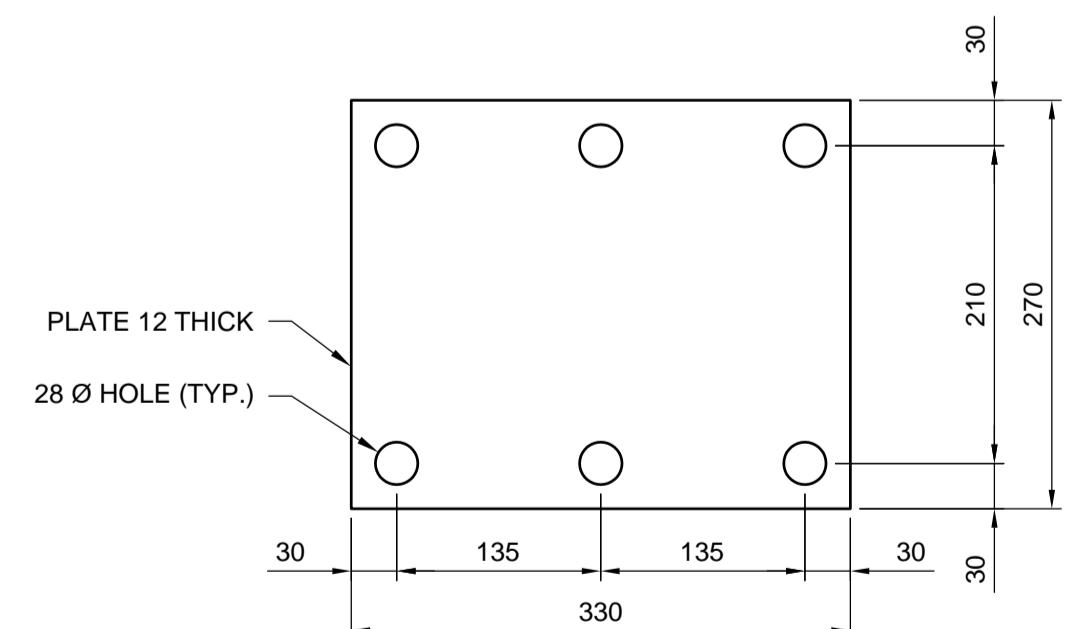
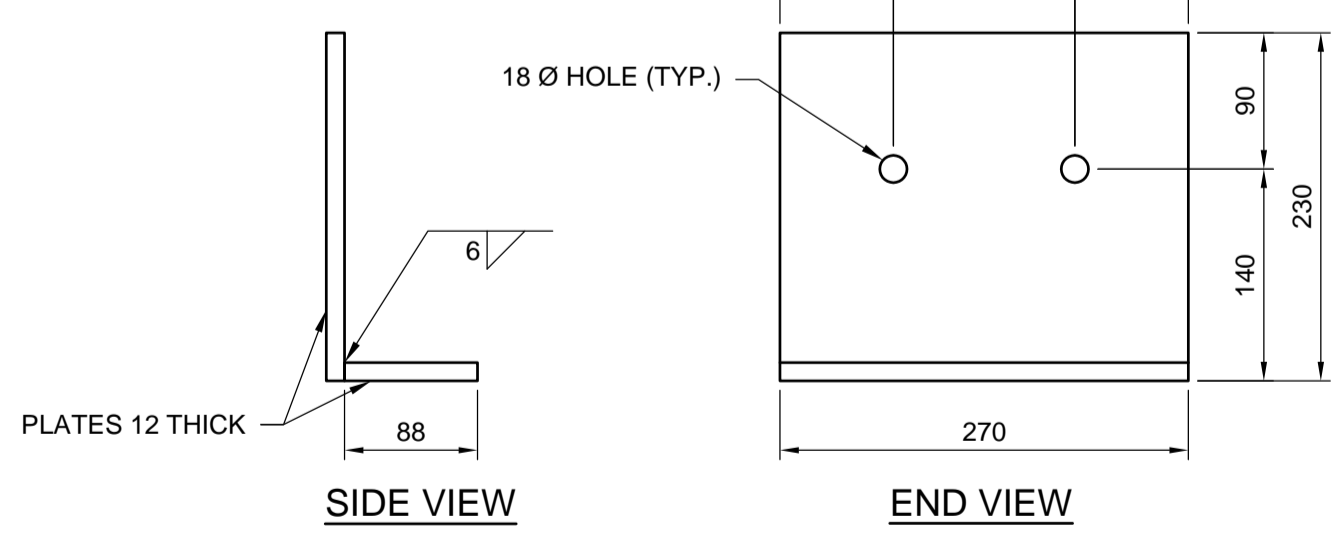
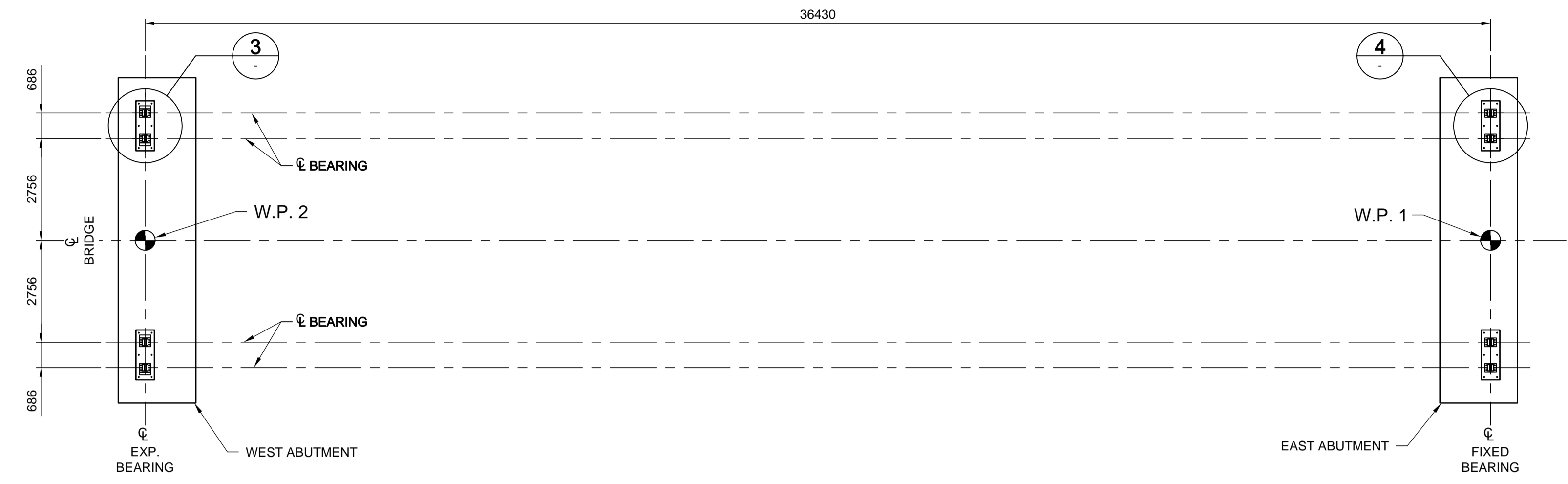


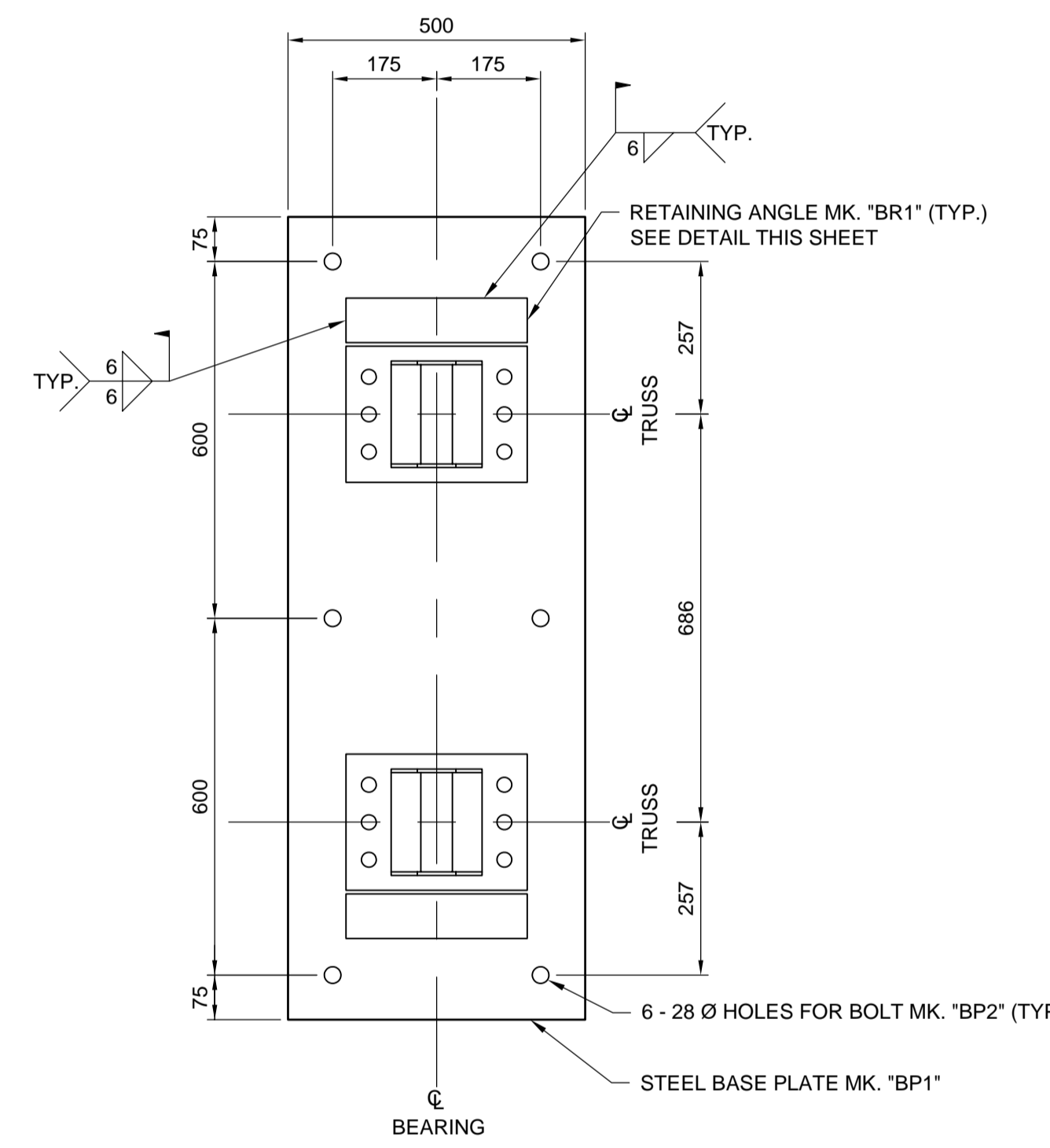
PLATE "C"



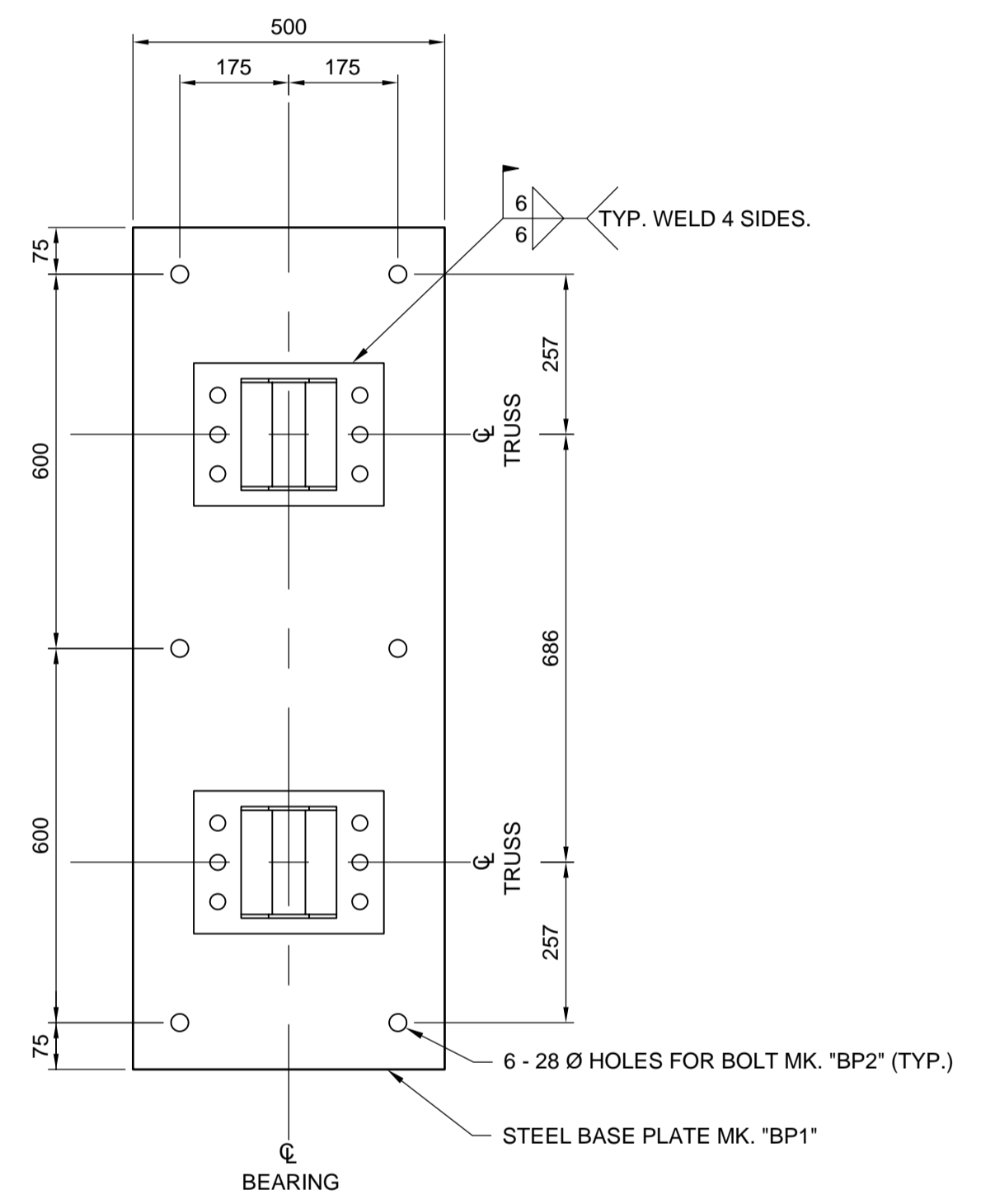
STEEL BRACE MK. "S1"
1:5



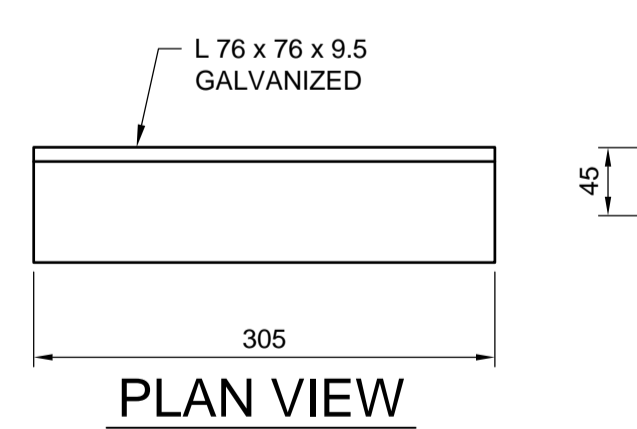
BEARING CENTERS
1:100



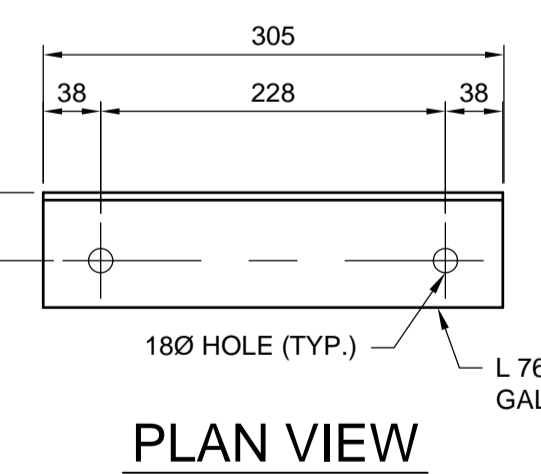
3 EXPANSION BEARING
1:10



4 FIXED BEARING
1:10



RETAINING ANGLE MK. "BR1"
1:5 FOR EXPANSION BEARINGS



RETAINING ANGLE MK. "BR2"
1:5 FOR TRANSOM BOLSTER

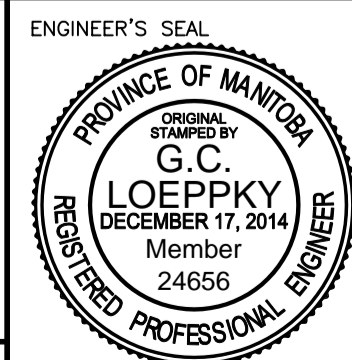
NOTE:
1. FABREEKA PAD SHALL BE PLACED UNDER ALL BASE PLATES (MIN. 3mm THICK).
2. FOR "BILL OF MISCELLANEOUS METALS FOR EAST AND WEST ABUTMENTS, DECK AND GUARDRAILS" SEE SHEET No. 11

TYPICAL ANCHOR BOLT INSTALLATION:
1. DRILL 28Ø HOLE x 300 DEEP.
2. INSTALL 25Ø x 300 SS EXPANSION ANCHOR.
3. TIGHTEN TO MANUFACTURER RECOMMENDATION.

METRIC

WHOLE NUMBERS INDICATE MILLIMETRES
DECIMALIZED NUMBERS INDICATE METRES

B.M. ELEV.	DESIGNED BY	GCL
	DRAWN BY	JLD
	CHECKED BY	MBL
	APPROVED BY	MBL
	HOR. SCALE	VERTICAL
0 ISSUED FOR TENDER	14/12/17	GCL
NO. REVISIONS	DATE	BY
	2014/12/17	



BRIDGE OVER THE FALCON RIVER DIVERSION & ASSOCIATED ROADWORKS	CITY DRAWING NUMBER ----
BEARING DETAILS	SHEET 08 OF 13
	CONSULTANT DRAWING NUMBER

CONSULTANT PROJECT NUMBER
13-8363

G:\CAD\138363\11-Structural\01-Contract\138363-09-BEARING DETAILS.dwg