

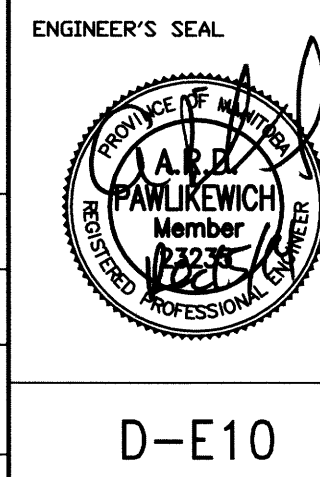
1 VOLTAGE MONITOR SCHEMATIC
SCALE: N.T.S

NOTES:

- POWER MONITOR SETPOINTS AS FOLLOWS:
UNBALANCE: 9%
LINE VOLTAGE: 600V
TRIP DELAY: 2 SEC
RESTART DELAY: 10 SEC
SELECTOR: AUTO RESTART WITH DELAY
- CONTACT IS CLOSED DURING NORMAL OPERATION AND IS OPEN DURING A FAULT OR LOSS OF POWER.
- PROVIDE A 4-POLE, DOUBLE THROW, 120VAC RELAY IN THE RTU PANEL.
- REFER TO DRAWING 1-0139F-A0007-001 (D-E20) FOR ADDITIONAL DETAILS.



FIELD BOOK #		DESIGNED BY		CHECKED BY	
POSTED TO LBIS		DAL			
		BGD			
		N.T.S.			
		N.T.S.			
0	ISSUED FOR CONSTRUCTION	14/12/15	AP		
NO.	REVISIONS	DATE	BY	DATE	2014 05 22



THE CITY OF WINNIPEG
WATER AND WASTE DEPARTMENT

FLOOD PUMPING STATION UPGRADES
DUMOULIN STATION
ELECTRICAL
DETAILS

SHEET 1 OF 1
CITY DRAWING NUMBER
1-0139F-A0006-001

D-E10