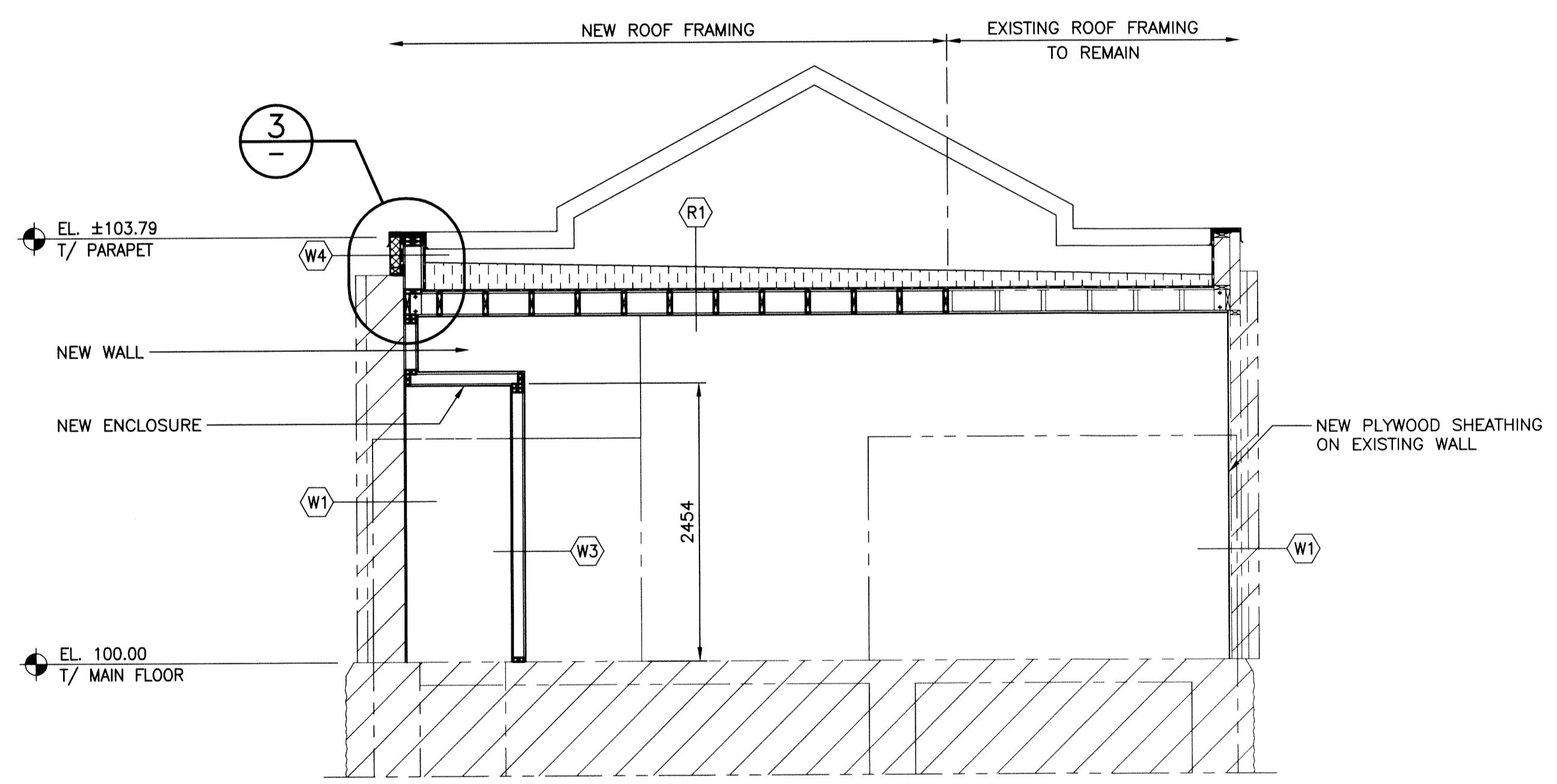
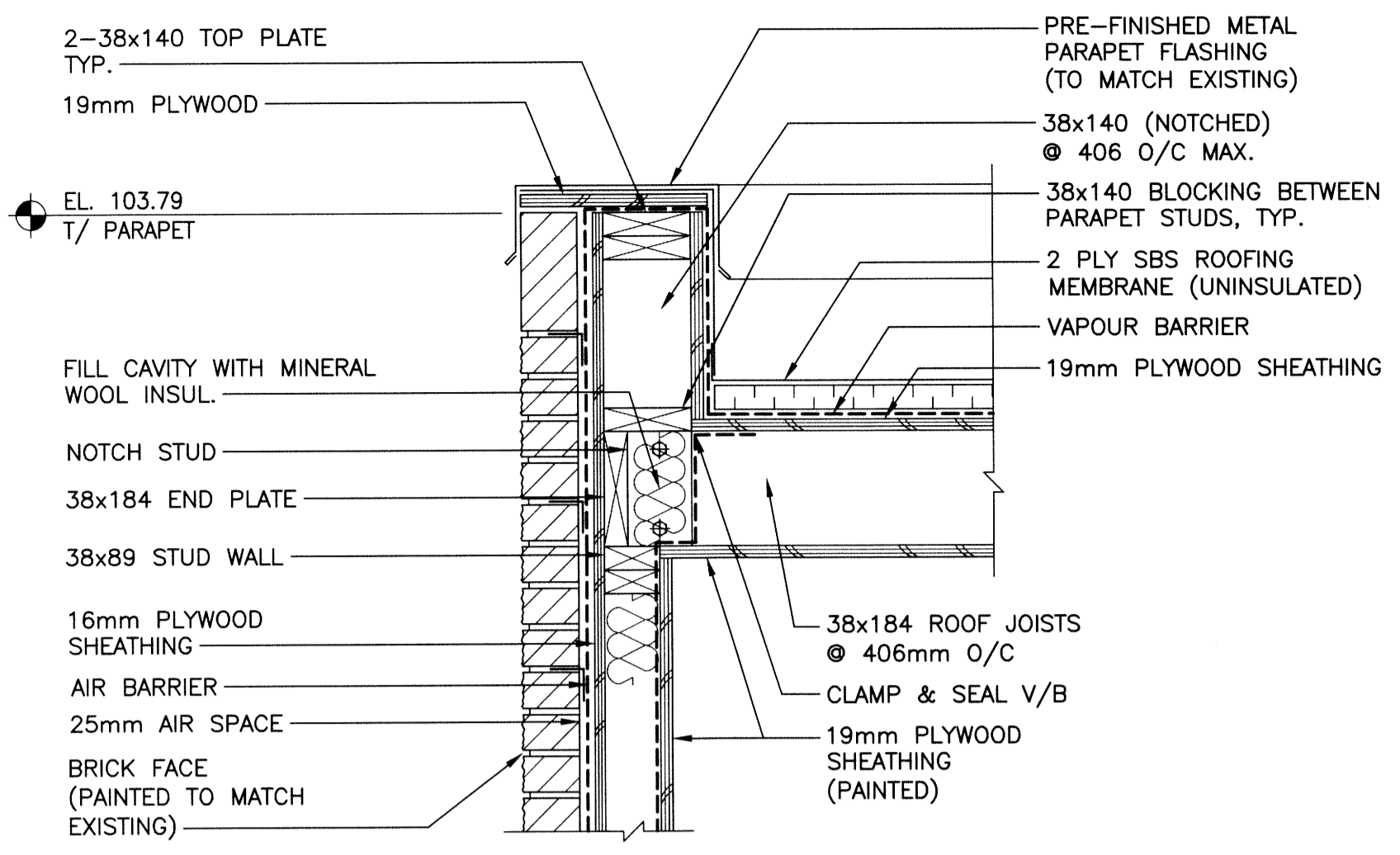


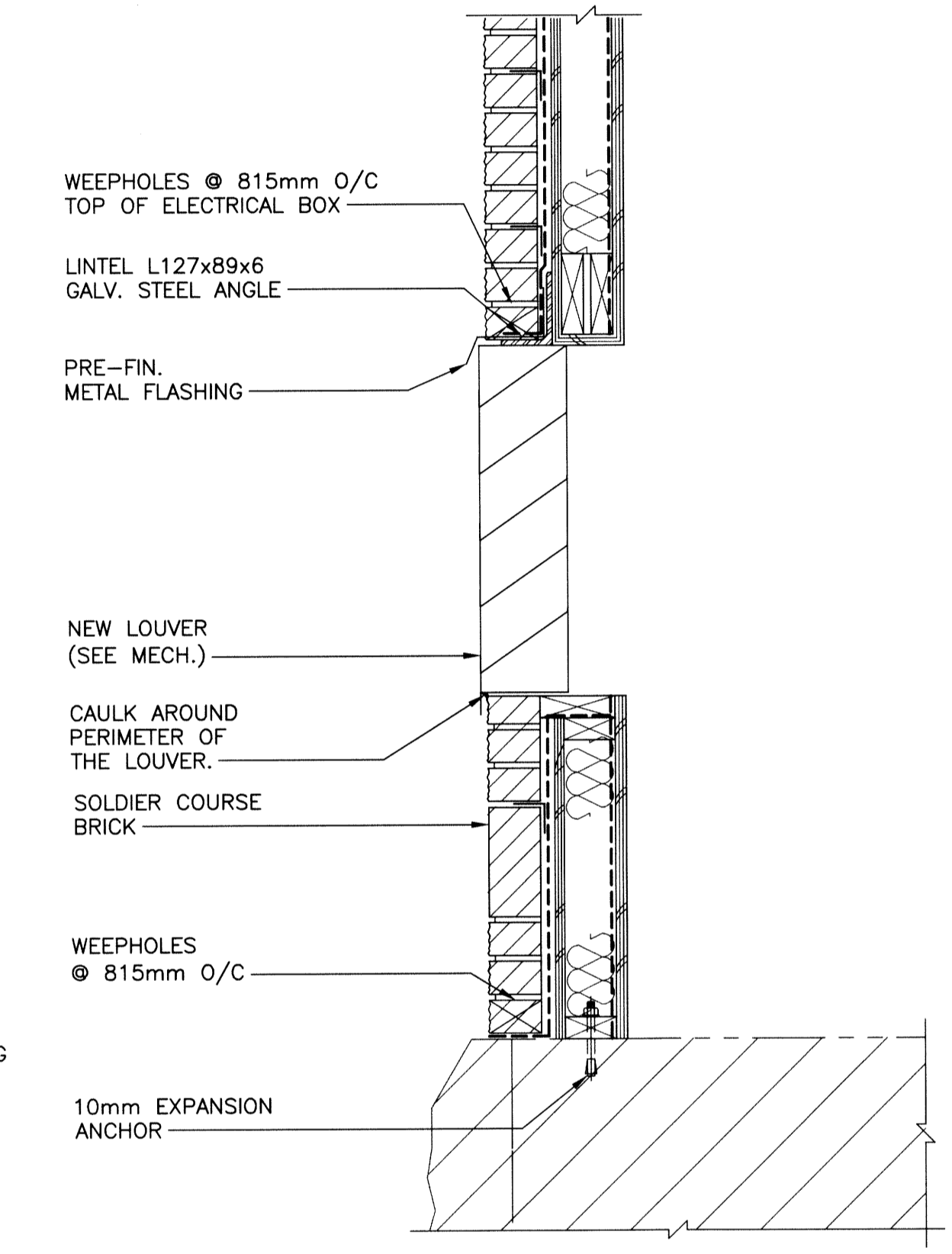
A
B01 BUILDING SECTION
SCALE: 1:40



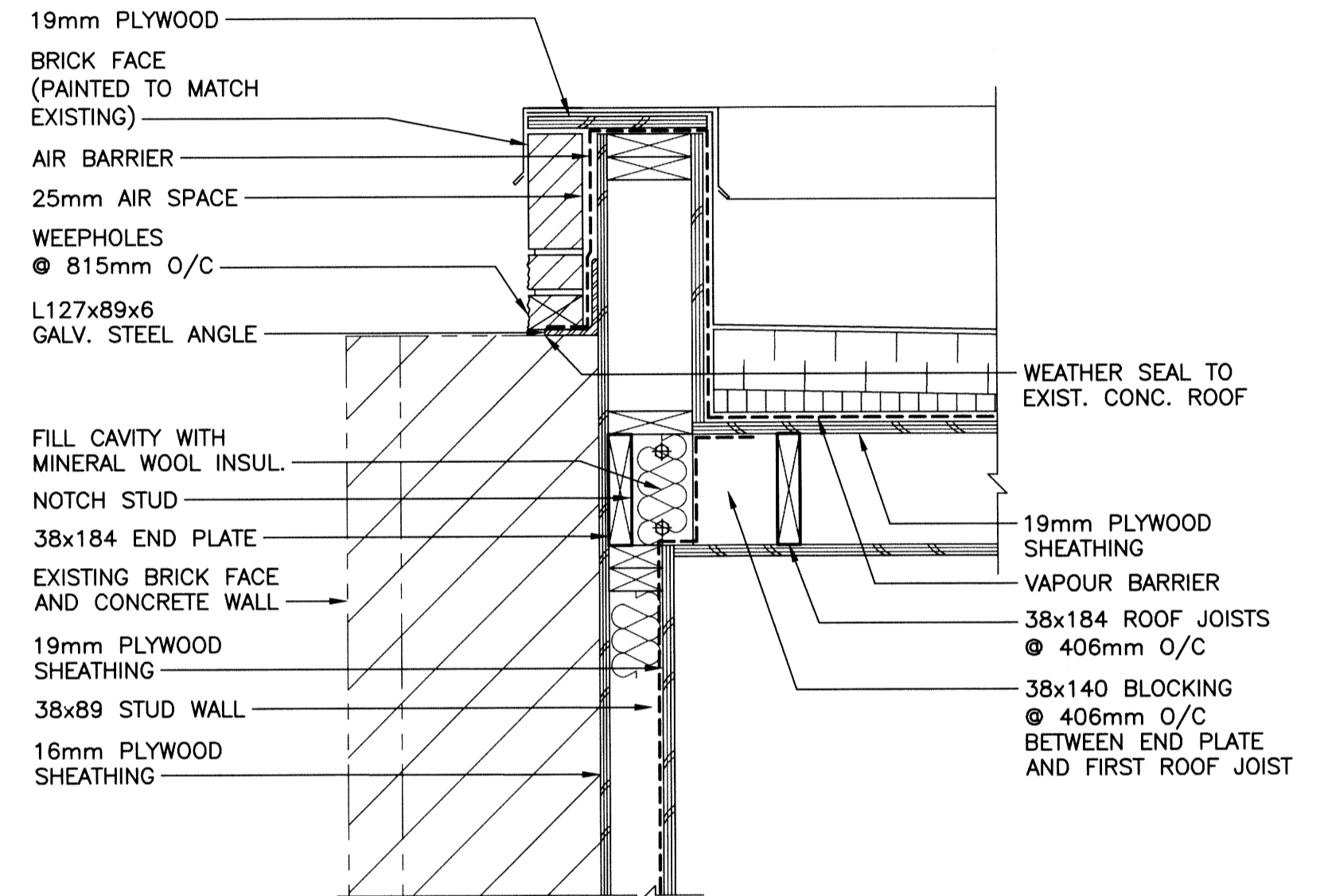
B
B01 BUILDING SECTION
SCALE: 1:40



1
DETAIL
SCALE: 1:10



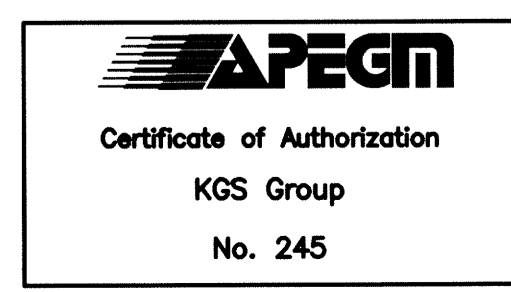
2
DETAIL
SCALE: 1:10



3
DETAIL
SCALE: 1:10

STEEL DOOR HARDWARE:

- 1. DOORS TO BE FURNISHED AS PER DOOR SCHEDULE WITH HARDWARE LISTED BELOW, OR APPROVED EQUAL:
 - HINGES - STANLEY
1 1/2 PR. 114x102 FBB191 NRP C26D (EXTERIOR)
1 1/2 PR. 114x102 FBB179 C26D (INTERIOR)
PROVIDE ADDITIONAL HINGES FOR OVERSIZED DOORS AS PER MANUFACTURER'S RECOMMENDATIONS.
 - EXIT DEVICE - VON DUPRIN
98L-F x 626 RIM DEVICE (FIRE RATED DOORS)
98L x 626 RIM DEVICE (NON FIRE RATED DOORS)
 - LOCKSET - SCHLAGE
AL53PD x SAT x 626, FOR D100 (ENTRANCE TYPE)
CONFIRM MASTER KEYING REQUIREMENTS WITH CONTRACT ADMINISTRATOR.
 - PASSAGE SET - SCHLAGE
AL10S x SAT x 626, FOR D101 & 200 (NON LOCKING TYPE)
 - CLOSURE - LCN
4041 SUPER SMOOTHIE CLOSURE
 - DOOR STOP - STANLEY
CD80-4011 x 32D (WALL STOP)
 - CHECK CHAIN
HEAVY DUTY x 26D WITH CHAIN COVER
 - WEATHERSTRIP - K.N. CROWDER
W15 NEOPRENE WEATHERSTRIPPING
W24S BRUSH SWEEP
 - THRESHOLD - K.N. CROWDER
CT-45 THERMALLY BROKEN (EXTERIOR DOORS)
 - KICKPLATE - STANDARD METAL
K10A x 254mm (1.27mm) S.S. KICK PLATE



FIELD BOOK #				ENGINEER'S SEAL	
POSTED TO LBIS					
DESIGNED BY	CMS	CHECKED BY	JMW	D-B03	
DRAWN BY	JAR	APPROVED BY			
HOR. SCALE	AS NOTED	RELEASED FOR CONSTRUCTION			
VERTICAL	AS NOTED				
0 ISSUED FOR CONSTRUCTION	14/12/17	CMS			
NO. REVISIONS	DATE	BY	DATE	2014-11-24	

THE CITY OF WINNIPEG
WATER AND WASTE DEPARTMENT

FLOOD PUMPING STATION UPGRADES
DUMOULIN STATION
BUILDING
BUILDING SECTIONS

SHEET 1 OF 1
CITY DRAWING NUMBER
1-0139F-B0003-001