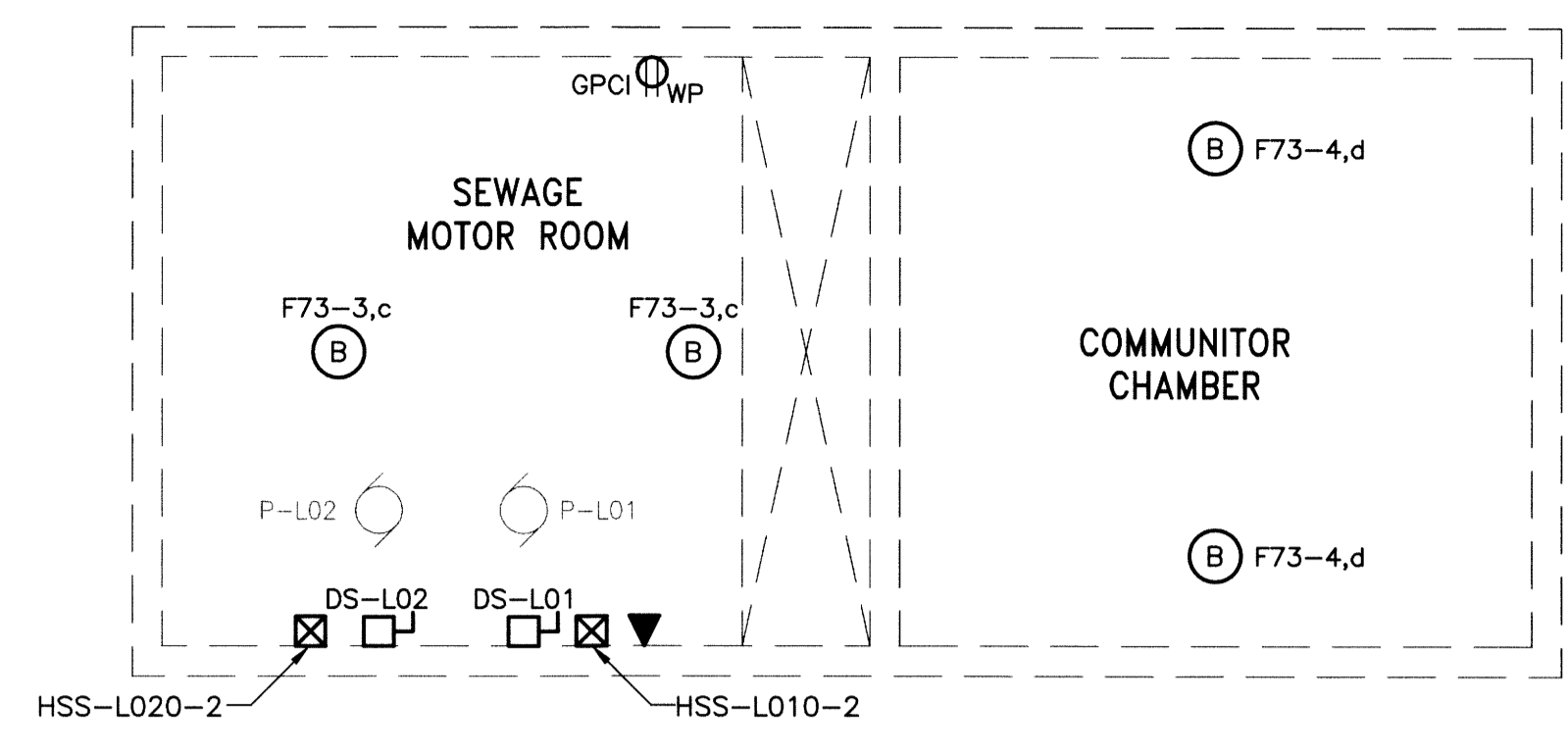
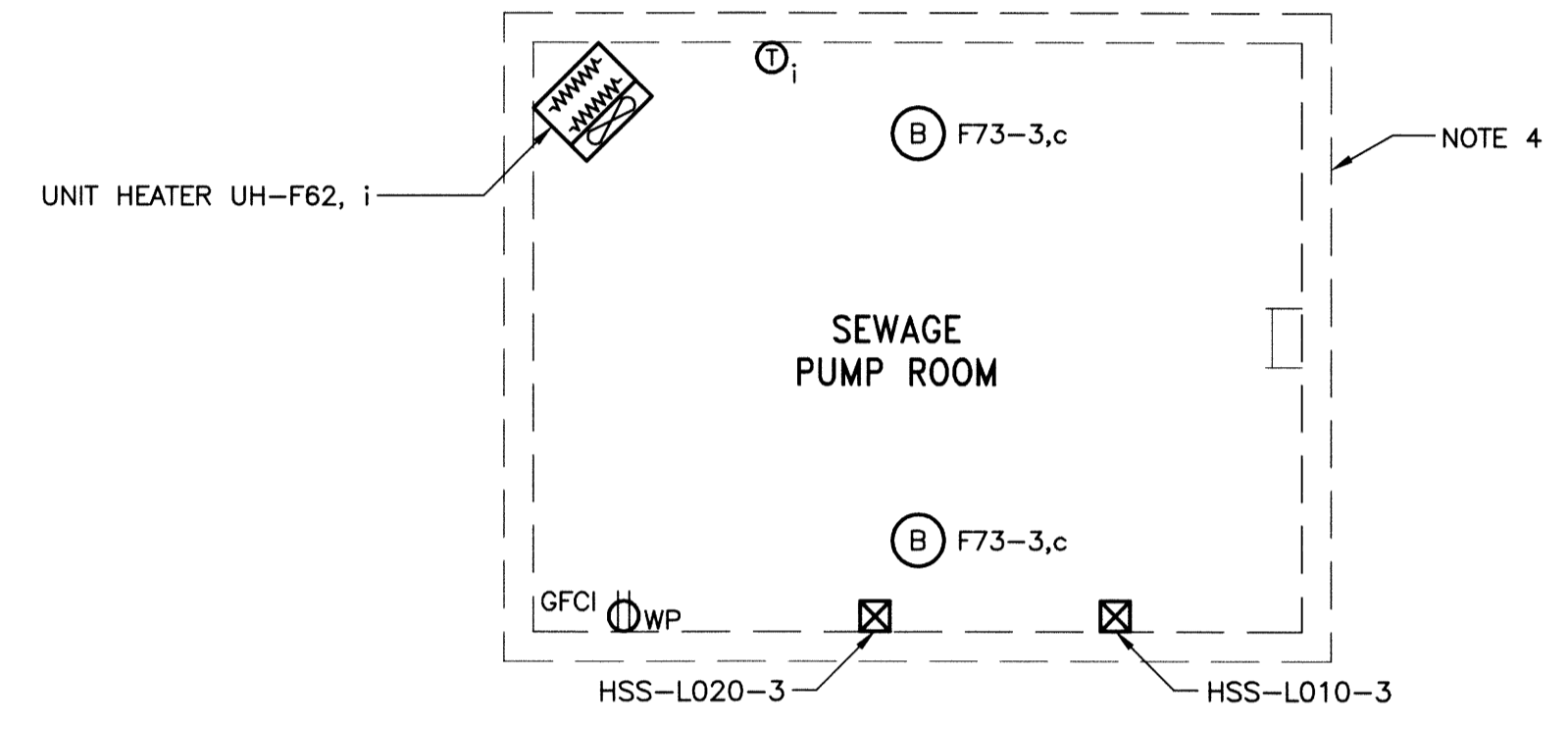


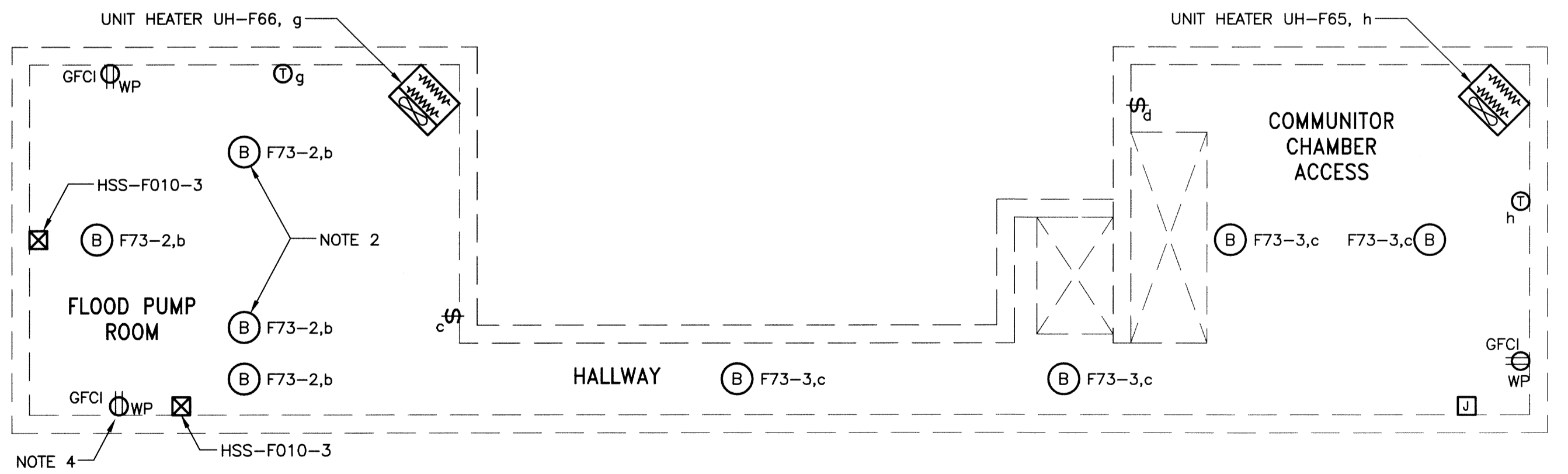
**1 POWER, SYSTEMS AND LIGHTING PLAN - NEW**  
SCALE: 1:50mm



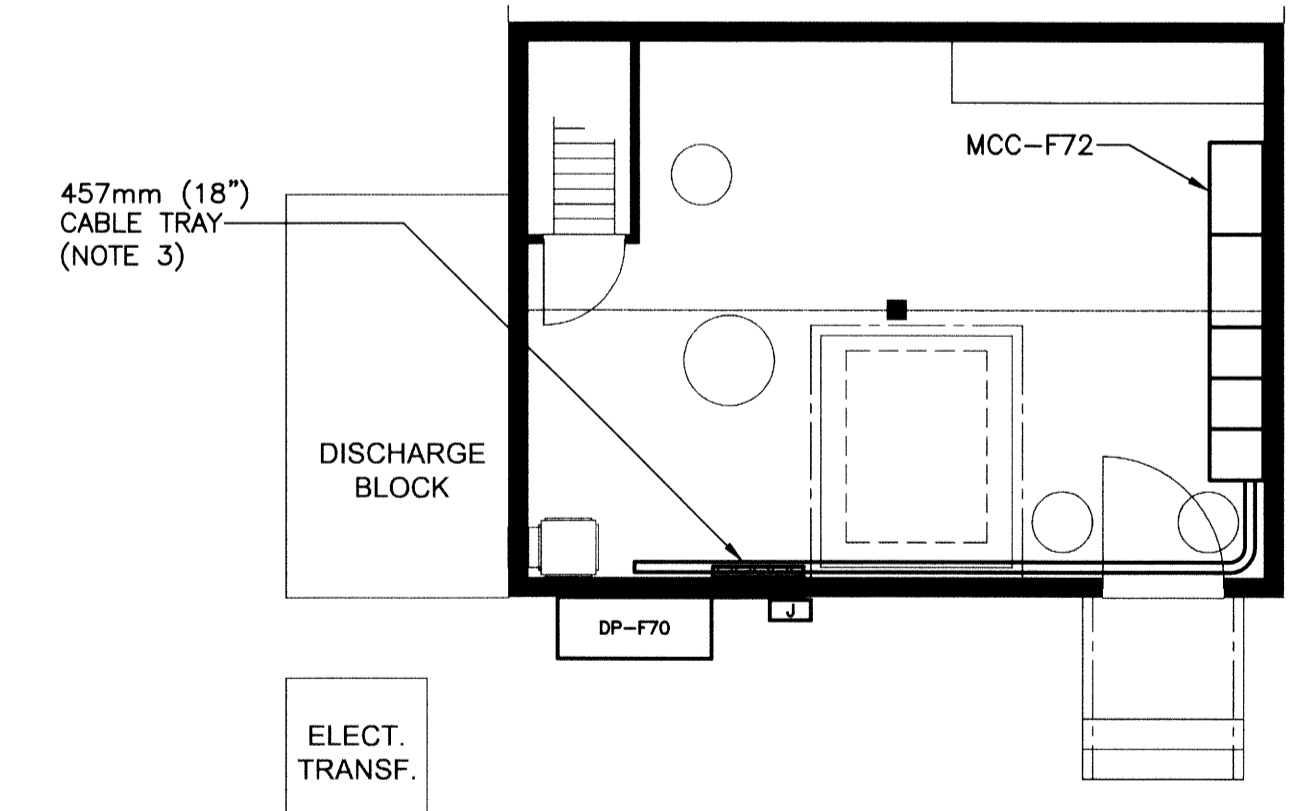
**3 LIFT STATION LOWER LEVELS PLAN - NEW**  
SCALE: 1:50mm



**4 LOWER LIFT STATION PUMP ROOM PLAN - NEW**  
SCALE: 1:50mm



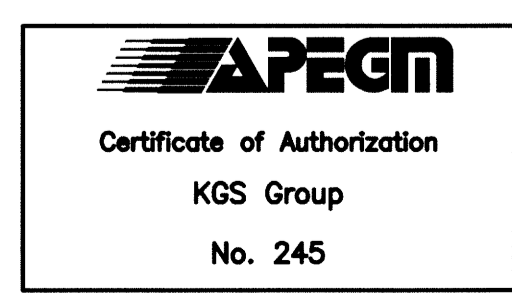
**2 LOWER LEVELS PLAN - NEW**  
SCALE: 1:50mm



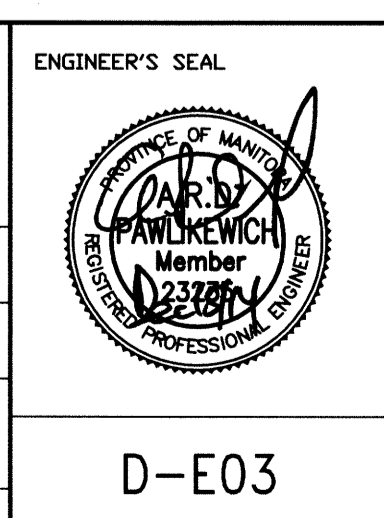
**5 PARTIAL PLAN SHOWING CABLE TRAY - NEW**  
SCALE: 1:75mm

- NOTES:**
- SUPPLY FAN IS ROOFTOP MOUNTED.
  - LIGHT FIXTURES BELOW BEAM IN DRY WELL.
  - INSTALL CABLE TRAY VERTICALLY ON WALL. ENSURE CABLE TRAY IS CLEAR OF ALL OTHER EQUIPMENT. FASTEN CABLES TO CABLE TRAY WITH CABLE CLAMPS.
  - PROVIDE NEW SOLENOID VALVE AND PRESSURE SWITCH IN SEAL WATER PIPING FOR EACH FLOOD AND SEWAGE PUMP. WIRE BACK TO RTU.

- LEGEND:**
- 4' LED FIXTURE
  - DENOTES:
  - = CONTROLLING CIRCUIT
  - = LUMINAIRE TYPE
  - 240V RECEPTACLE
  - DUPLEX RECEPTACLE
  - TWIST-LOCK SINGLE RECEPTACLE
  - SWITCH
  - X DENOTES ITEM(S) CONTROLLED
  - O DENOTES OCCUPANCY SWITCH
  - JUNCTION BOX
  - 1Ø MOTOR LOAD
  - 3Ø MOTOR LOAD
  - INCANDESCENT LIGHT
  - a DENOTES CONTROLLING CIRCUIT
  - LED LIGHT FIXTURE CERTIFIED FOR WET AREAS
  - EMERGENCY LIGHTING BATTERY UNIT
  - c/w 2 LTG. HEADS
  - REMOTE EMERGENCY LIGHTING HEADS
  - TELEPHONE
  - LOCAL DISCONNECT SWITCH
  - EMERGENCY STOP PUSHBUTTON
  - WELDING RECEPTACLE
  - UNIT HEATER
  - THERMOSTAT
  - DENOTES: X = ITEM(S) CONTROLLED



FIELD BOOK #:		<b>KGS GROUP</b> CONSULTING ENGINEERS		ENGINEER'S SEAL	
POSTED TO LBIS		DESIGNED BY	DDW	CHECKED BY	
		DRAWN BY	GCN	APPROVED BY	
		HDR. SCALE	N.T.S.	RELEASED FOR CONSTRUCTION	
0	ISSUED FOR CONSTRUCTION	14/12/15	AP	VERTICAL	N.T.S.
NO.	REVISIONS	DATE	BY	DATE	2014 01 13



**THE CITY OF WINNIPEG**  
WATER AND WASTE DEPARTMENT

FLOOD PUMPING STATION UPGRADES  
DUMOULIN STATION  
**ELECTRICAL**  
POWER, SYSTEMS AND LIGHTING PLAN

SHEET 1 OF 1  
CITY DRAWING NUMBER  
1-0139F-E0004-001

D-E03