

**ROOF FRAMING PLAN**

SCALE: 1:40

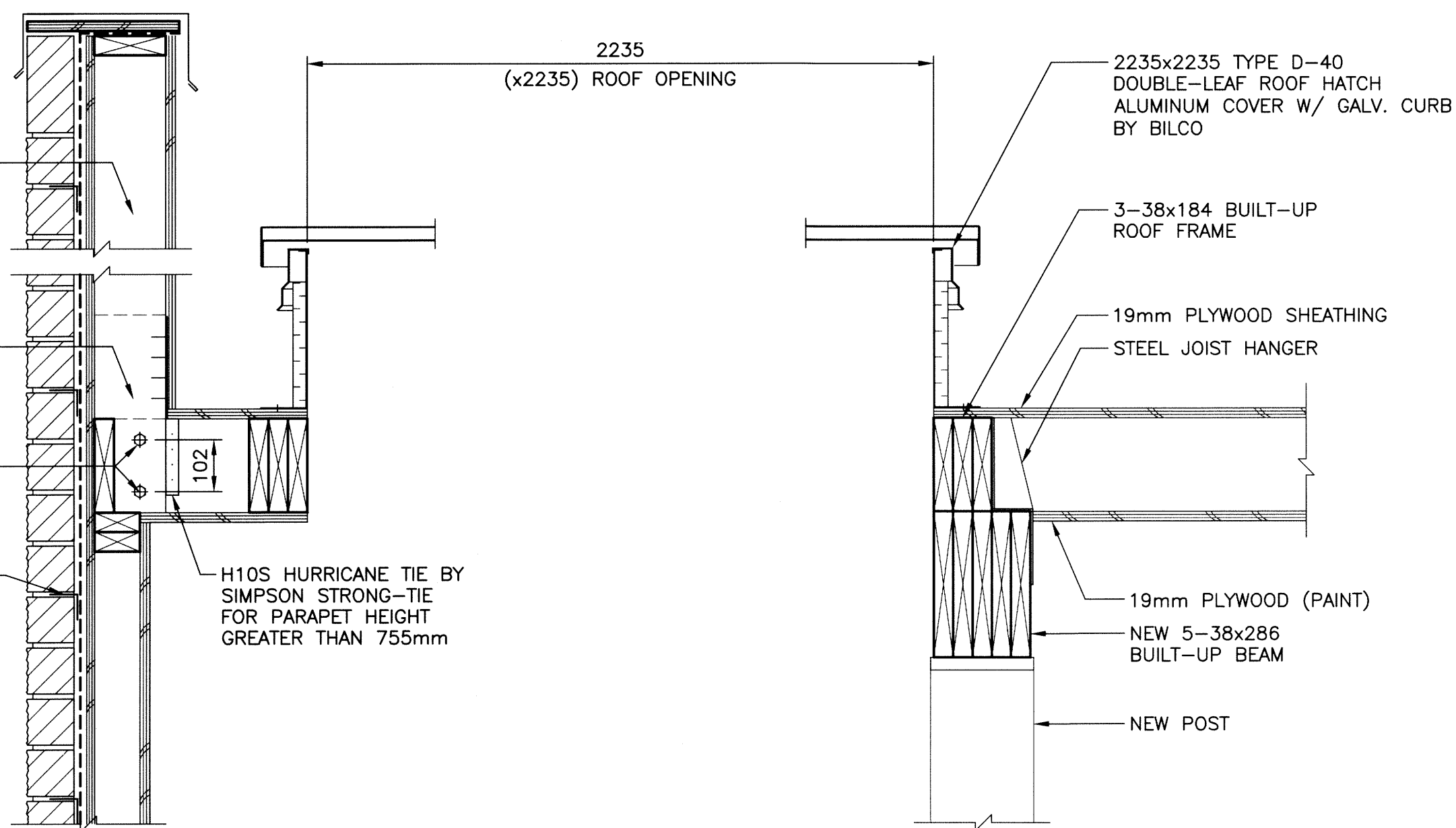
38x140 FOR PARAPET HEIGHT LESS THAN 755mm  
2-38x140 FOR PARAPET HEIGHT GREATER THAN 755mm EACH SIDE OF 38x184 JOIST

PROVIDE BLOCKING BETWEEN 2-38x140 FOR FASTENING HURRICANE TIES C/W 8-76mm WIRE NAILS FOR PARAPET HEIGHT GREATER THAN 755mm

2-13mmØ BOLTS  
MASONRY TIES EVERY 4TH COURSE FASTENED TO STUDS (FERO CAT-TIE, TYP)

H10S HURRICANE TIE BY SIMPSON STRONG-TIE FOR PARAPET HEIGHT GREATER THAN 755mm

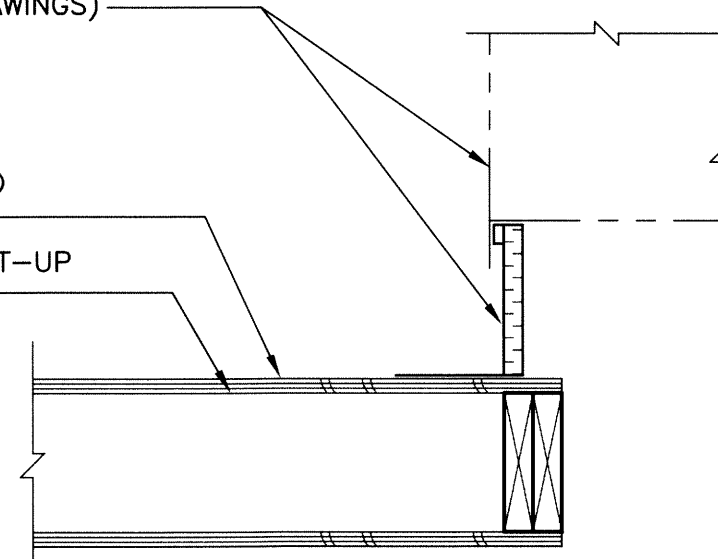
**A SECTION**  
SCALE: 1:10



MECHANICAL ROOF UNIT C/W ROOF CURB (SEE MECH DRAWINGS)

19mm PLYWOOD SHEATHING  
3-38x184 BUILT-UP ROOF FRAME

**B SECTION**  
SCALE: 1:10



**GENERAL NOTES:**

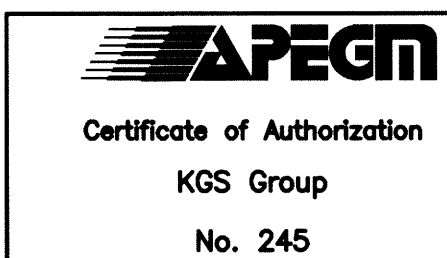
1. SITE VERIFY ALL DIMENSIONS, ELEVATIONS, DETAILS, QUANTITIES AND CONDITIONS PRIOR TO START OF ANY DEMOLITION, CONSTRUCTION OR PREFABRICATION OF ANY BUILDING COMPONENT.
2. EXISTING STRUCTURAL SUPPORTS WHICH INTERFERE WITH NEW WORK SHALL BE RELOCATED UPON APPROVAL BY THE CONTRACT ADMINISTRATOR.
3. THE CONTRACTOR SHALL ENSURE THAT ALL BURIED SERVICES ARE LOCATED AND MARKED PRIOR TO EXCAVATION.
4. ALL BUILDING SYSTEMS COMPONENTS SHALL BE THE PRODUCTS OF A SINGLE MANUFACTURER UNLESS SPECIFIED OTHERWISE.
5. SHIP, STORE, HANDLE, ERECT, INSTALL, ETC. ALL BUILDING MATERIALS, COMPONENTS, FIXTURES, EQUIPMENT, ETC. AS PER MANUFACTURER'S WRITTEN INSTRUCTIONS.
6. ALL DEMOLITION, FABRICATION, CONSTRUCTION, ETC. SHALL BE CARRIED OUT IN ACCORDANCE WITH ALL PERTINENT BUILDING CODES, AND LOCAL BYLAWS AND ORDINANCES.
7. EACH TRADE SHALL BE RESPONSIBLE TO PROVIDE ADEQUATE PROTECTION FOR THE EXISTING FACILITY/PROPERTY TO PREVENT PHYSICAL DAMAGE AND LOSS OF VALUE OR USE OF ANY KIND, AS A RESULT OF DEMOLITION, CONSTRUCTION AND RELATED ACTIVITIES.
8. TIME AND DURATION OF ANY NECESSARY DISRUPTION IN THE USE OF ANY ROOM, SPACE, SERVICE, EQUIPMENT, ETC. SHALL BE COORDINATED WITH, AND APPROVED BY THE CONTRACT ADMINISTRATOR AT THE START OF THE PROJECT. PROVIDE CONTRACT ADMINISTRATOR WITH MINIMUM ONE WEEK NOTICE (OR AS REQUIRED) PRIOR TO EACH ACTUAL OCCURRENCE.
9. THE CONTRACTOR SHALL BE RESPONSIBLE TO NOTIFY THE CONTRACT ADMINISTRATOR OF ANY PREVIOUSLY UNNOTICED PRE-EXISTING FLAW OR CONDITION THAT MIGHT INCREASE THE SCOPE OF WORK OR COMPROMISE NEW CONSTRUCTION, PRIOR TO THE START OF DEMOLITION AND CONSTRUCTION, OR AS SOON AS IT IS DISCOVERED.
10. DRAWINGS SHALL BE READ IN CONJUNCTION WITH THE PROJECT TECHNICAL SPECIFICATIONS.

**DEMOLITION:**

1. ALL DEMOLITION WORK SHALL BE DONE IN ACCORDANCE WITH THE REQUIREMENTS OF ALL PERTINENT BUILDING CODES, THE MANITOBA DEPARTMENT OF LABOUR, AND ANY OTHER PROVINCIAL AND LOCAL BY-LAWS, REGULATIONS AND ORDINANCES.
2. DEMOLITION SHALL INCLUDE THE SAFE REMOVAL, HAULING AND DUMPING OF ALL DEBRIS, ETC. TO AN APPROVED SITE. ALL COSTS ASSOCIATED WITH THIS OPERATION, INCLUDING TRANSPORT, LICENSES AND FEES SHALL BE THE RESPONSIBILITY OF THE CONTRACTOR.
3. COORDINATE THE MOVING AND STORAGE OF SALVAGED ITEMS, MATERIALS, EQUIPMENT, ETC. WITH THE CITY.

**ROOF LOADS:**

DEAD LOAD: 0.5 kPa  
SNOW LOAD: 4.1 kPa



NO.	REVISIONS	DATE	BY
0	ISSUED FOR CONSTRUCTION	14/12/17	CMS

DESIGNED BY	CMS	CHECKED BY	JMW
DRAWN BY	JAR	APPROVED BY	
HR. SCALE	AS NOTED	RELEASED FOR CONSTRUCTION	
VERTICAL	AS NOTED		
DATE	2014-11-24	DATE	

ENGINEER'S SEAL  
  
 D-S01

**THE CITY OF WINNIPEG**  
 WATER AND WASTE DEPARTMENT  
 FLOOD PUMPING STATION UPGRADES  
 DUMOULIN STATION  
**STRUCTURAL**  
 ROOF FRAMING PLAN & SECTIONS

SHEET 1 OF 1  
 CITY DRAWING NUMBER  
 1-0139F-S0001-001