

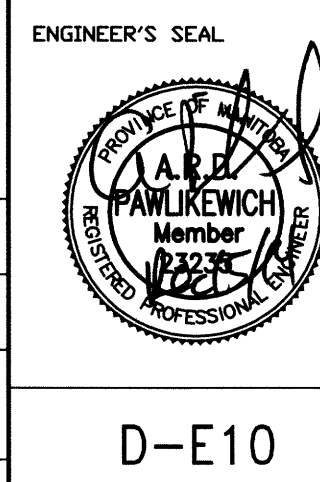
1 VOLTAGE MONITOR SCHEMATIC  
SCALE: N.T.S

NOTES:

- POWER MONITOR SETPOINTS AS FOLLOWS:  
UNBALANCE: 9%  
LINE VOLTAGE: 600V  
TRIP DELAY: 2 SEC  
RESTART DELAY: 10 SEC  
SELECTOR: AUTO RESTART WITH DELAY
- CONTACT IS CLOSED DURING NORMAL OPERATION AND IS OPEN DURING A FAULT OR LOSS OF POWER.
- PROVIDE A 4-POLE, DOUBLE THROW, 120VAC RELAY IN THE RTU PANEL.
- REFER TO DRAWING 1-0139F-A0007-001 (D-E20) FOR ADDITIONAL DETAILS.



FIELD BOOK #		DESIGNED BY		CHECKED BY	
POSTED TO LBIS		DAL		AP	
		BGI		AP	
		N.T.S.		RELEASED FOR CONSTRUCTION	
0 ISSUED FOR CONSTRUCTION		14/12/15 AP		2014 05 22	
NO.	REVISIONS	DATE	BY	DATE	DATE



**THE CITY OF WINNIPEG**  
WATER AND WASTE DEPARTMENT

FLOOD PUMPING STATION UPGRADES  
DUMOULIN STATION  
**ELECTRICAL**  
DETAILS

SHEET 1 OF 1  
CITY DRAWING NUMBER  
1-0139F-A0006-001

D-E10