

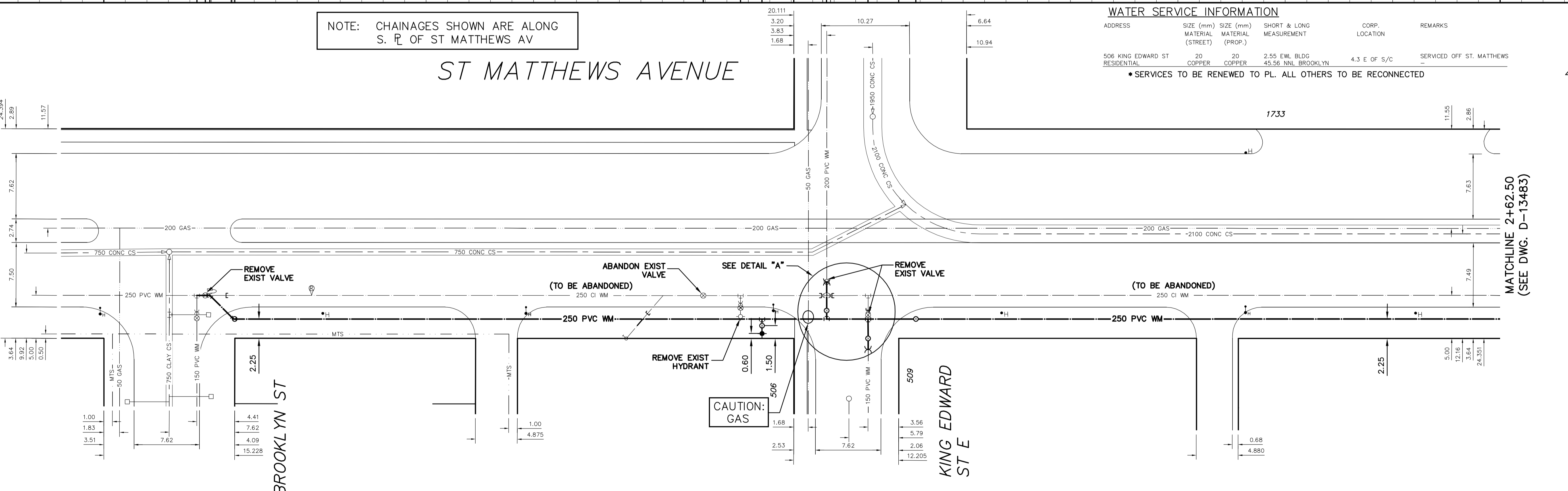
NOTE: CHAINAGES SHOWN ARE ALONG S. R. OF ST MATTHEWS AV

### ST MATTHEWS AVENUE

#### WATER SERVICE INFORMATION

ADDRESS	SIZE (mm) MATERIAL (STREET)	SIZE (mm) MATERIAL (PROP.)	SHORT & LONG MEASUREMENT	CORP. LOCATION	REMARKS
506 KING EDWARD ST RESIDENTIAL	20 COPPER	20 COPPER	2.55 EWL BLDG 45.56>NNL BROOKLYN	4.3 E OF S/C	SERVICED OFF ST. MATTHEWS

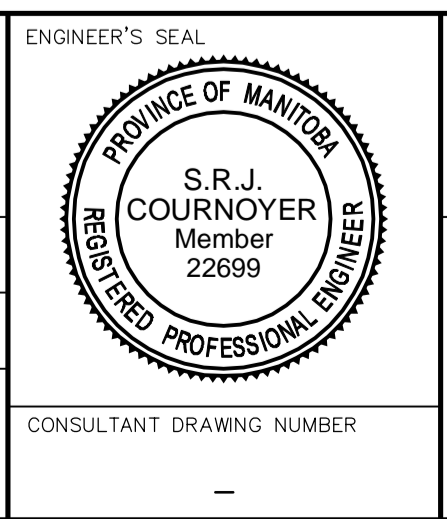
\*SERVICES TO BE RENEWED TO PL. ALL OTHERS TO BE RECONNECTED



**WARNING**  
IF POWER EQUIPMENT OR EXPLOSIVES ARE TO BE USED FOR EXCAVATION ON THIS PROJECT THE CONTRACTOR MUST:  
1) NOTIFY THE GAS COMPANY OF THE PROPOSED LOCATION OF EXCAVATION.  
2) TAKE PRECAUTION TO AVOID DAMAGE TO GAS COMPANY INSTALLATIONS.  
SEE PROVINCIAL REGULATION 21072 FOR DETAILS

**LOCATION APPROVED UNDERGROUND STRUCTURES**  
SUPV. U/G STRUCTURES COMMITTEE DATE  
NOTE:  
LOCATION OF UNDERGROUND STRUCTURES AS SHOWN ARE BASED ON THE BEST INFORMATION AVAILABLE BUT NO GUARANTEE IS GIVEN THAT ALL EXISTING UTILITIES ARE SHOWN OR THAT THE GIVEN LOCATIONS ARE EXACT. CONFIRMATION OF EXISTENCE AND EXACT LOCATION OF ALL SERVICES MUST BE OBTAINED FROM THE INDIVIDUAL UTILITIES BEFORE PROCEEDING WITH CONSTRUCTION.

B.M. ELEV.	
CONSTRUCTION COMPLETION DATE: YYYY MM DD	
DESIGNED BY	MJK
CHECKED BY	SC
DRAWN BY	SM
APPROVED BY	KZ
SCALE:	
HORIZONTAL	1:250
VERTICAL	1:50
DATE	2014 03 21
RELEASED FOR CONSTRUCTION	
DATE	



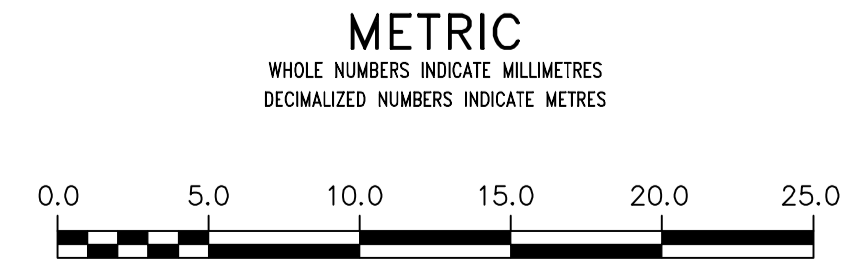
**THE CITY OF WINNIPEG**  
WATER AND WASTE DEPARTMENT  
ENGINEERING DIVISION

2014 WATER RENEWALS

ST MATTHEWS AVENUE  
5 W OF BROOKLYN STREET TO  
73 E OF KING EDWARD STREET

ENGINEER'S SEAL  
CONSULTANT DRAWING NUMBER

SHEET 9 OF 11  
CITY DRAWING NUMBER  
D-13482



VALVES TO BE COUNTER-CLOCKWISE TO CLOSE (RED OPERATING NUT)