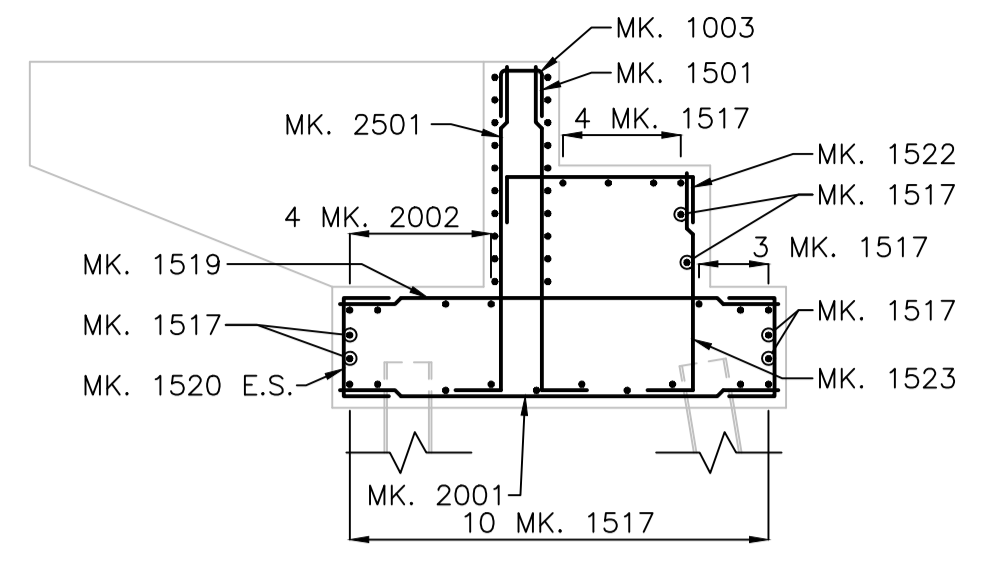
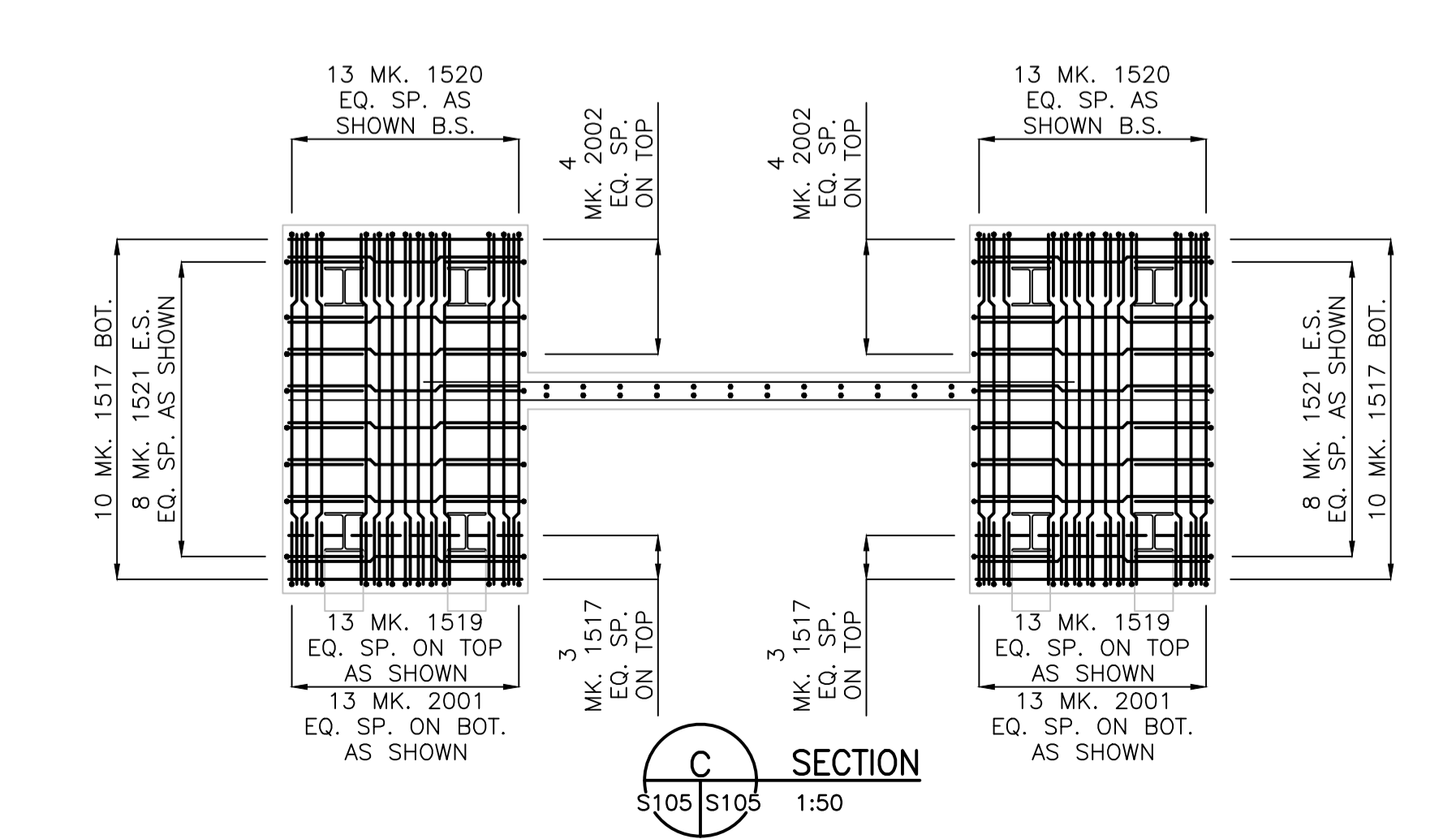
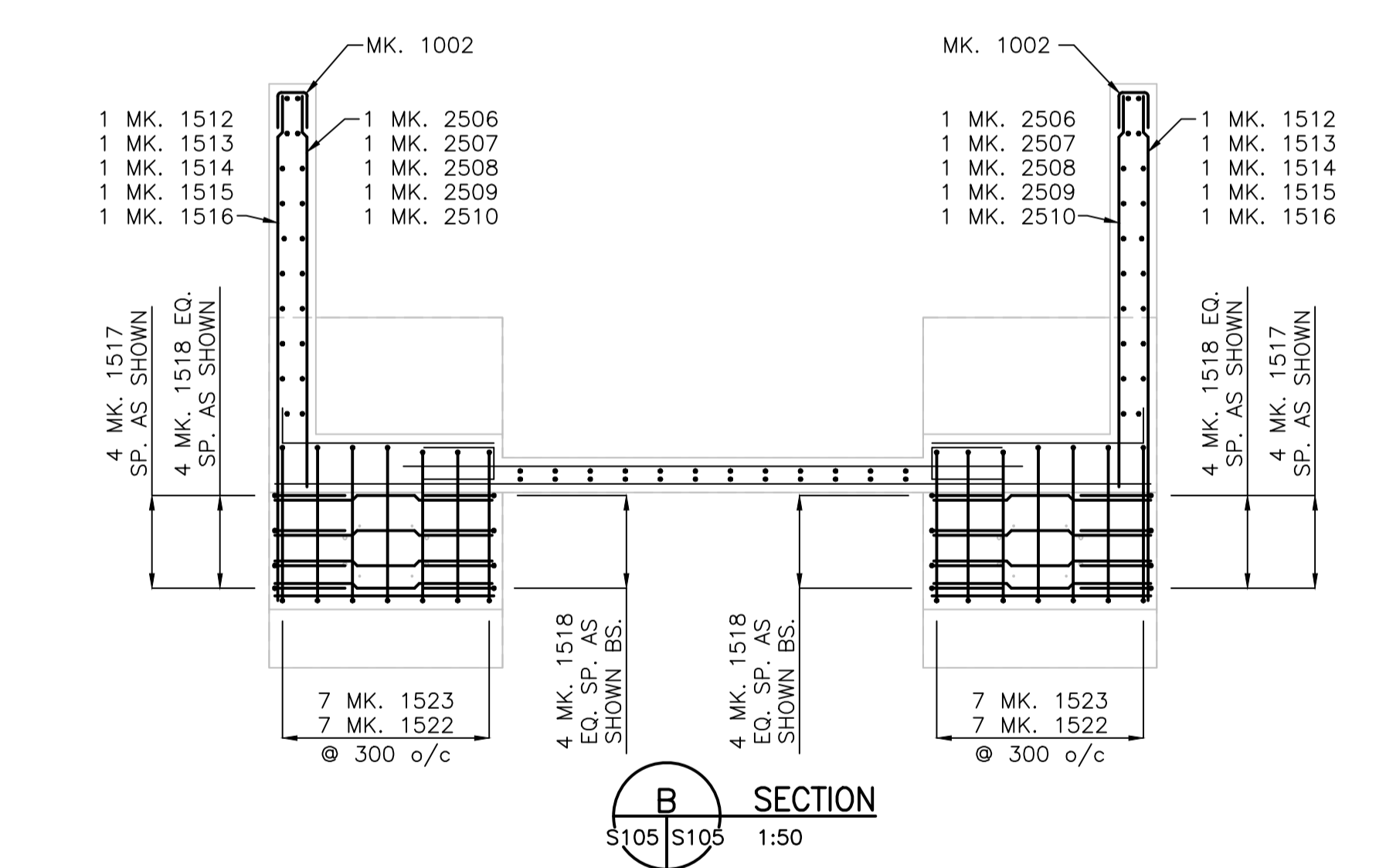
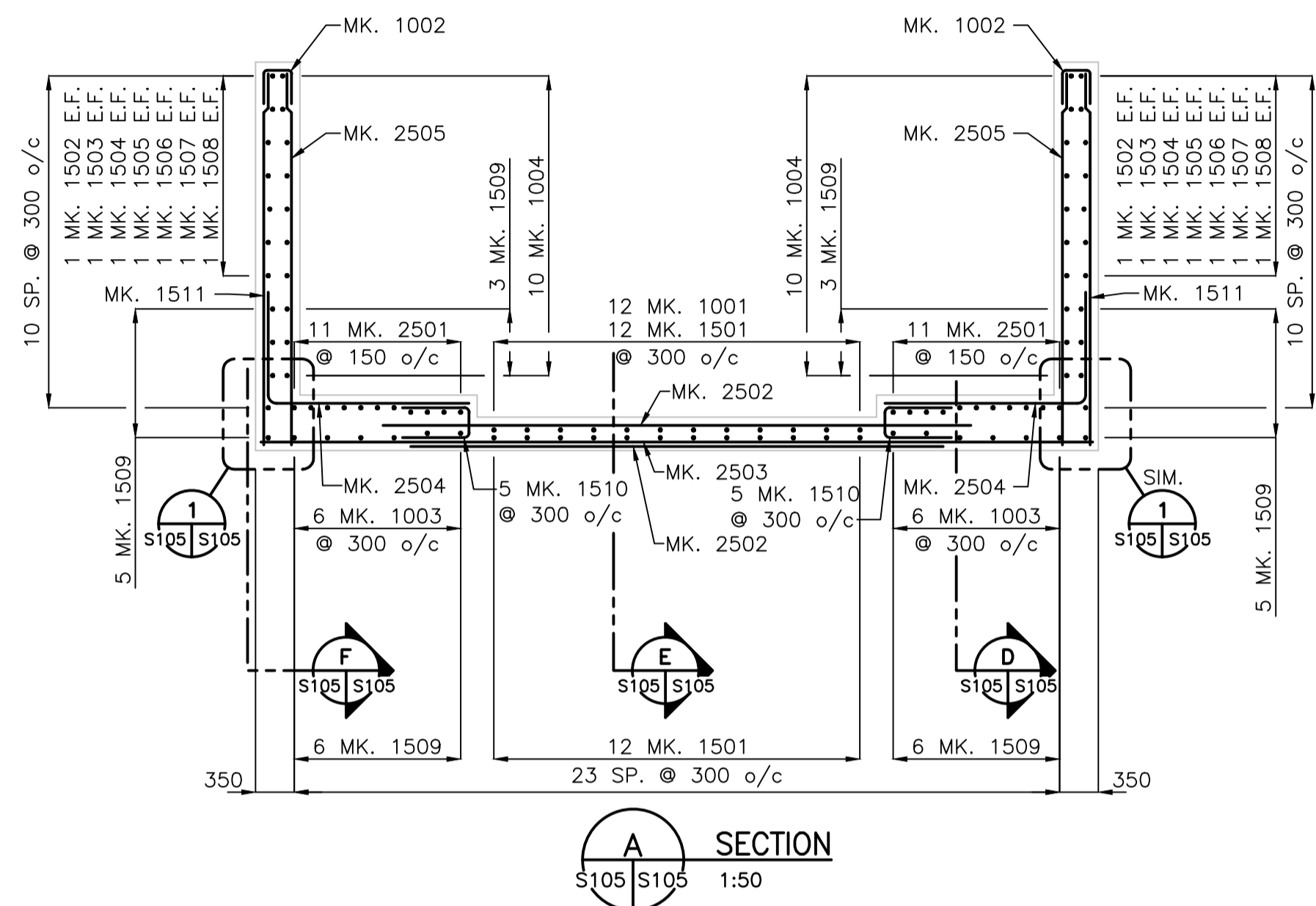
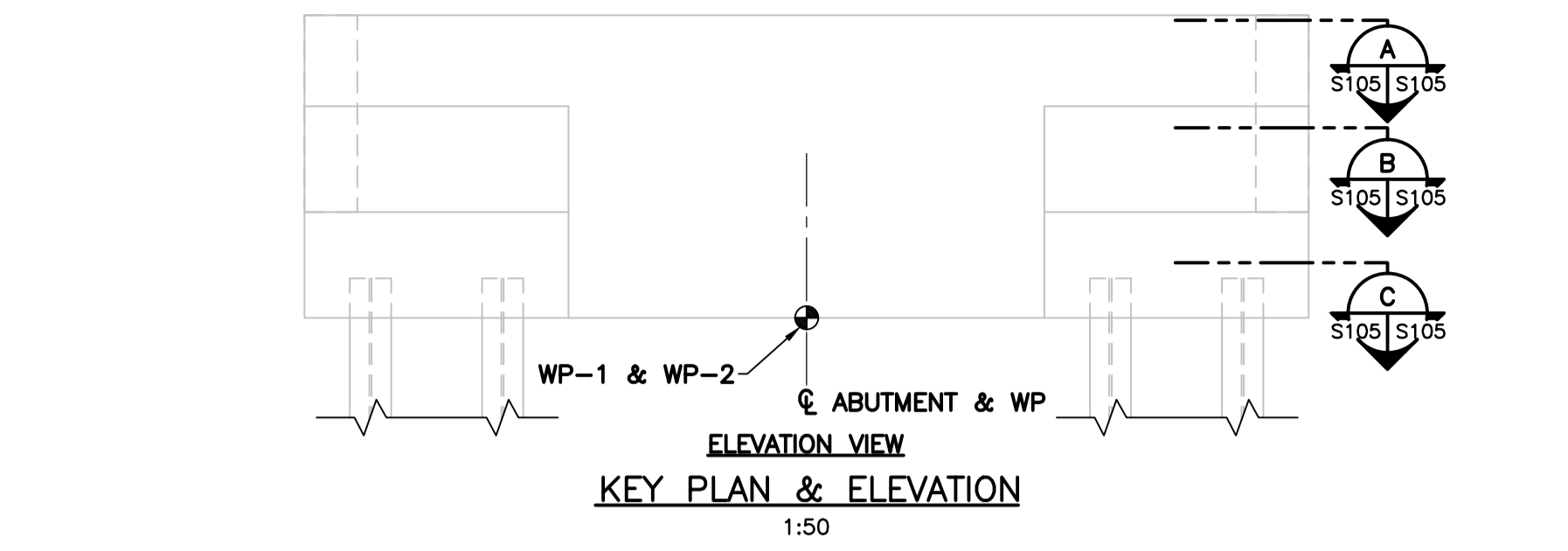
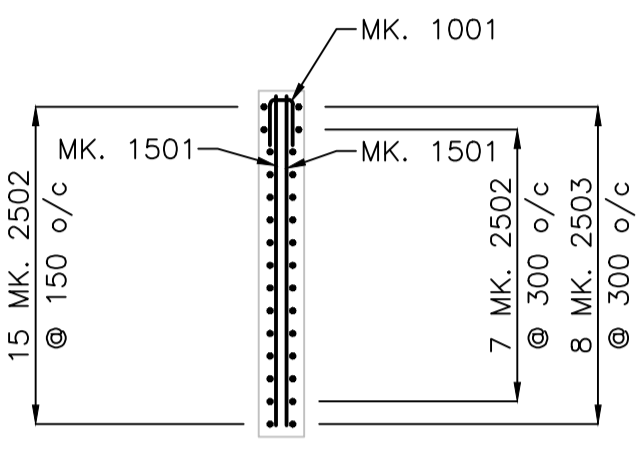


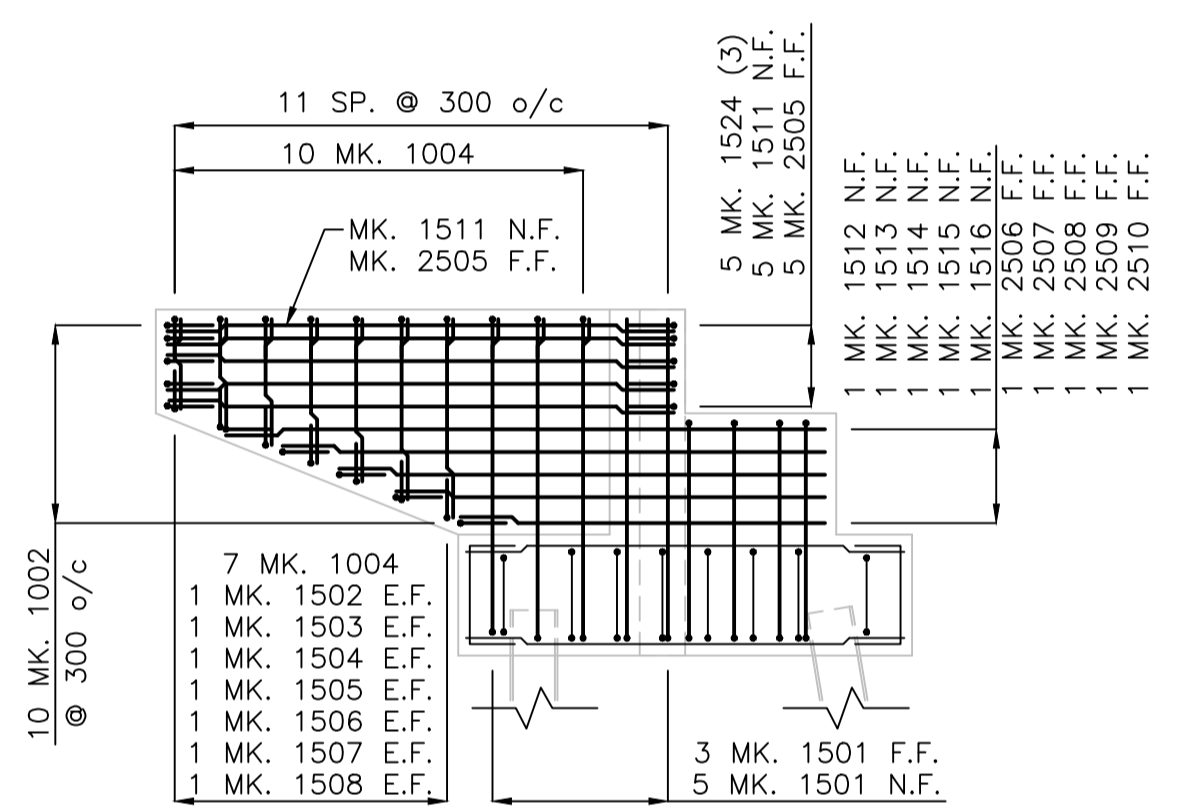
I:\1171\1171-0001\1171-0001.dwg  
 Date: 2014 Mar 27 10:51am  
 User: J.M.B.



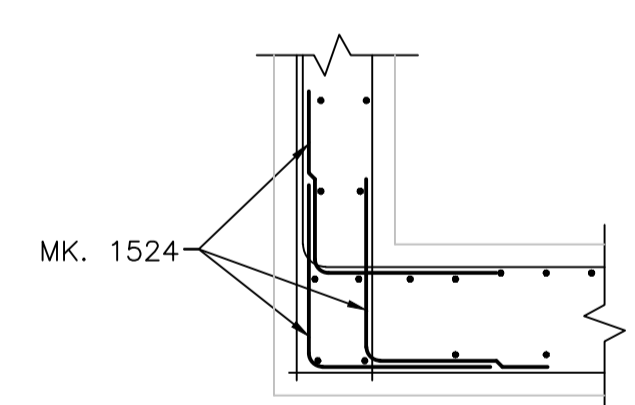
**D SECTION**  
S105 S105 1:50



**E SECTION**  
S105 S105 1:50

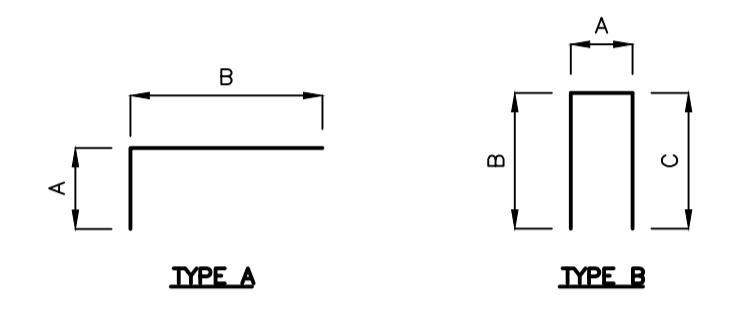


**F SECTION**  
S105 S105 1:50



**1 DETAIL**  
S105 S105 1:25

BILL OF REINFORCING STEEL											
FOR ABUTMENT SU.1 & SU.2											
STRAIGHT BARS				BENT BARS							
MARK	QTY.	LENGTH (mm)	MASS (kg)	MARK	QTY.	TYPE	A	B	C	LENGTH (mm)	MASS (kg)
1501	24	2140	80.6	1001	12	B	100	300	300	700	6.6
1502	4	750	4.7	1002	20	B	250	300	300	850	13.3
1503	4	870	5.5	1003	12	B	300	300	300	900	8.5
1504	4	990	6.2	1004	34	B	210	300	300	810	21.6
1505	4	1110	7.0								
1506	4	1230	7.7	1509	28	A	300	2140		2440	107.3
1507	4	1350	8.5	1510	10	B	350	600	600	1550	24.3
1508	4	1470	9.2	1518	16	B	1430	600	600	2630	66.1
1511	10	3350	52.6	1520	52	B	650	600	600	1850	151.0
1512	2	2410	7.6	1521	32	B	615	600	600	1815	91.2
1513	2	2835	8.9	1522	14	B	1325	600	600	2525	55.5
1514	2	3210	10.1	1523	14	A	300	1450		1750	38.5
1515	2	3585	11.3	1524	30	A	600	600		1200	56.5
1516	2	3960	12.4								
1517	46	1850	133.6	2501	22	A	300	2140		2440	210.7
1519	26	2850	116.3	2504	30	A	1000	1850		2850	335.6
2001	26	2850	174.5								
2002	8	1850	34.9								
				<b>TOTAL MASS OF REINFORCING STEEL FOR 1 ABUTMENT</b>				<b>2787.8 kg</b>			
<b>BAR TYPES</b>											
2502	22	5300	457.7								
2503	8	7450	233.9								
2505	10	3350	131.5								
2506	2	1410	11.1								
2507	2	1835	14.4								
2508	2	2210	17.3								
2509	2	2585	20.3								
2510	2	2962	23.3								



<b>LOCATION APPROVED UNDERGROUND STRUCTURES</b> SUPV. U/G STRUCTURES COMMITTEE DATE _____		B.M. ELEV. _____	
NOTE: LOCATION OF UNDERGROUND STRUCTURES AS SHOWN ARE BASED ON THE BEST INFORMATION AVAILABLE BUT NO GUARANTEE IS GIVEN THAT ALL EXISTING UTILITIES ARE SHOWN OR THAT THE GIVEN LOCATIONS ARE EXACT. CONFIRMATION OF EXISTENCE AND EXACT LOCATION OF ALL SERVICES MUST BE OBTAINED FROM THE INDIVIDUAL UTILITIES BEFORE PROCEEDING WITH CONSTRUCTION.		<b>Stantec</b> 100 - 1355 Taylor Avenue, Winnipeg MB Canada www.stantec.com	
DESIGNED BY: S.Y.S.	CHECKED BY: M.J.B.	ENGINEER'S SEAL	
DRAWN BY: J.M.B.	APPROVED BY: M.J.B.	<b>THE CITY OF WINNIPEG</b> <b>WATER AND WASTE DEPARTMENT</b> <b>ENGINEERING DIVISION</b>	
HOR. SCALE: AS NOTED	RELEASED FOR CONSTRUCTION: _____	<b>GREATER WINNIPEG WATER DISTRICT</b> RAILWAY BRIDGE REPLACEMENT AT MILE 22.15 ABUTMENT REINFORCING PLAN & DETAILS	
NO. REVISIONS	DATE	BY	CITY DRAWING NUMBER
0	14.03.24	J.M.B.	7 OF 15
	2014.03.24		CAD FILE DRAWING NUMBER 32050-s-105-800.dwg
			CITY DRAWING NUMBER <b>D-13428</b>

**METRIC**  
 WHOLE NUMBERS INDICATE MILLIMETRES  
 DECIMALIZED NUMBERS INDICATE METRES  
 UNLESS INDICATED OTHERWISE

