

CURVE	DEGREE	RADIUS (m)	LENGTH (m)	Δ	BEGIN			END		
					STATION	NORTHING	EASTING	STATION	NORTHING	EASTING
C1	09°30'00"	184.04	20.25	6°18'19"	TC 1+043.13	5524043.226	662779.445	CT 1+063.38	5524042.790	662799.684

NOTES

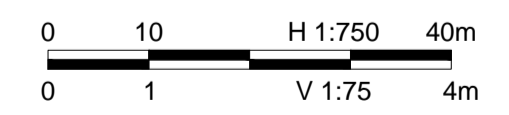
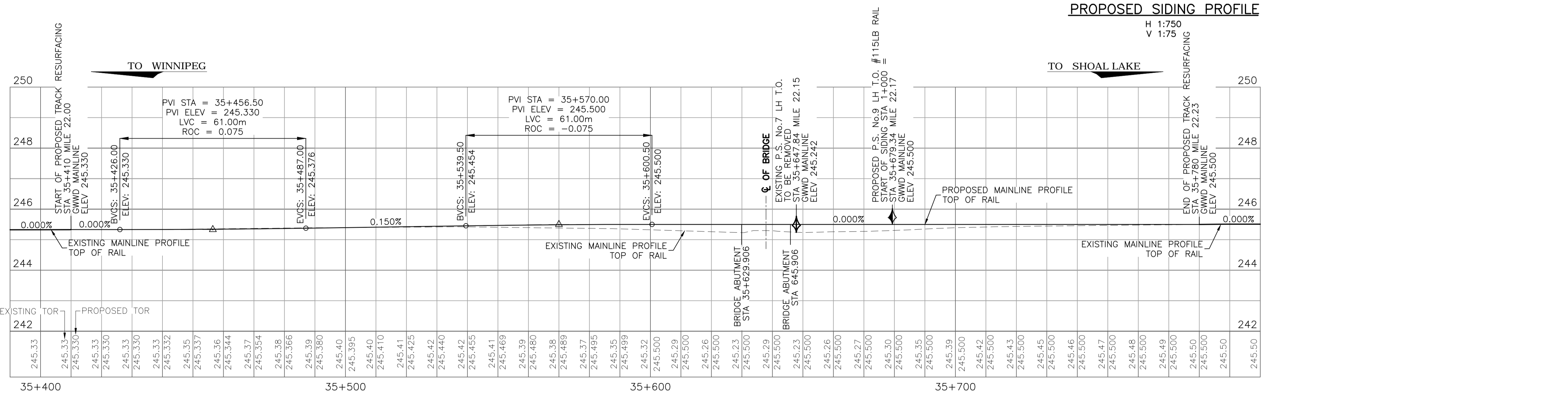
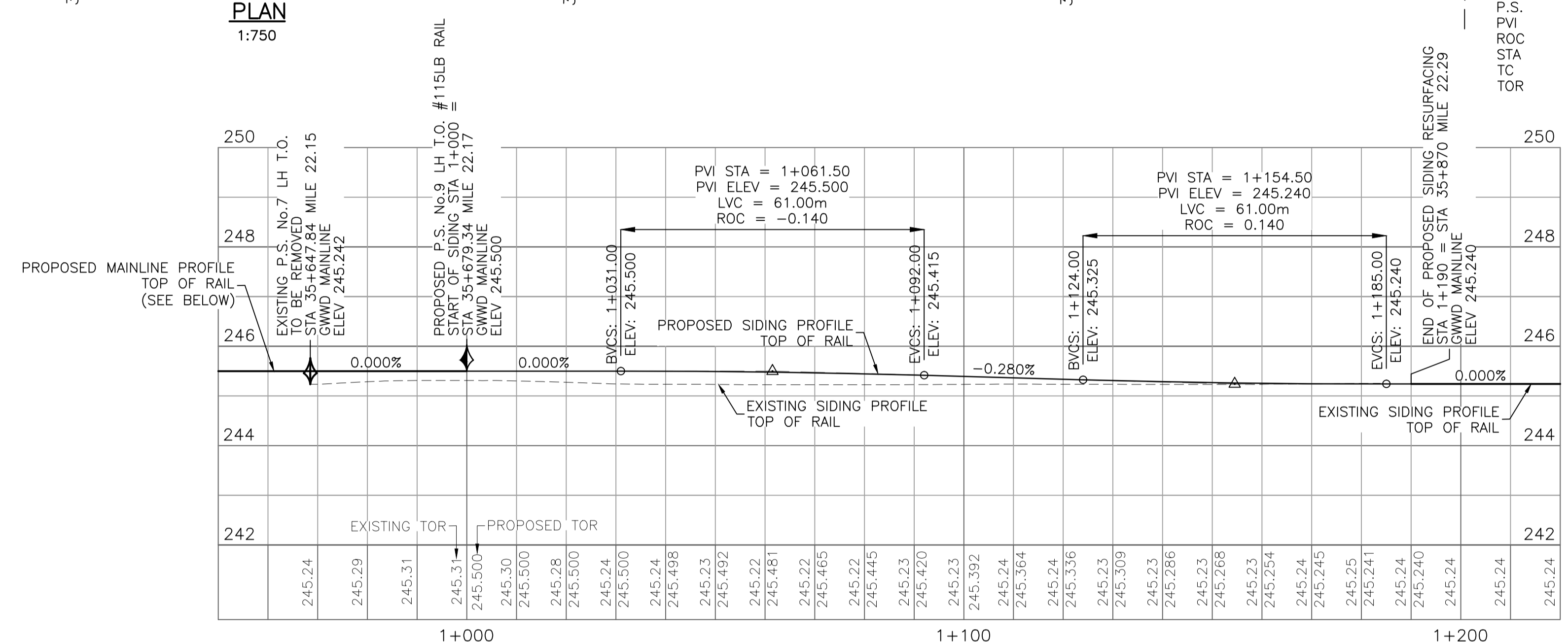
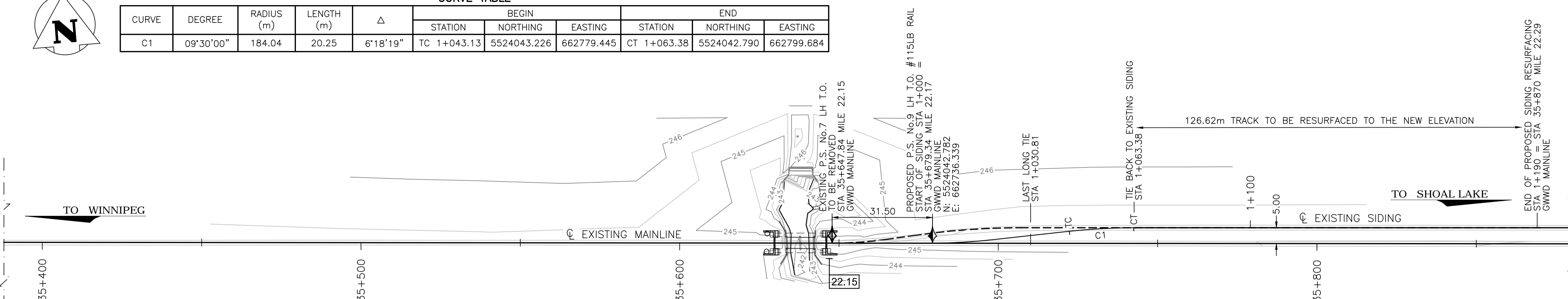
1. ALL DIMENSIONS SHOWN ARE IN METRES UNLESS NOTED OTHERWISE.
2. SURVEY CONTROL IS BASED ON GEODETIC DATUM NAD 83, UTM ZONE 14.
3. SIDING DESIGN SPEED = 15 MPH.

LEGEND

- PROPOSED POINT OF SWITCH
- EXISTING POINT OF SWITCH
- PROPOSED CENTRELINE RAIL
- EXISTING CENTRELINE RAIL TO BE REMOVED
- EXISTING CENTRELINE RAIL
- EXISTING CONTOURS
- EXISTING MILEPOST SIGN

ABBREVIATIONS

- BVCS BEGIN VERTICAL CURVE STATION
- CT CURVE TO TANGENT
- ELEV ELEVATION
- EVCS END VERTICAL CURVE STATION
- GWWD GREATER WINNIPEG WATER DISTRICT
- LH T.O. LEFT HAND TURNOUT
- LVC LENGTH OF VERTICAL CURVE
- P.S. POINT OF SWITCH
- PVI POINT OF VERTICAL INTERSECTION
- ROC % RATE OF CHANGE ON VERTICAL CURVE PER 100 FT
- STA STATION
- TC TANGENT TO CURVE
- TOR TOP OF RAIL



METRIC

WHOLE NUMBERS INDICATE MILLIMETRES
DECIMALIZED NUMBERS INDICATE METRES
UNLESS INDICATED OTHERWISE

APEGM
Certificate of Authorization
Stantec Consulting Ltd.
No. 1301

LOCATION APPROVED UNDERGROUND STRUCTURES

SUPV. U/G STRUCTURES COMMITTEE DATE

NOTE:
LOCATION OF UNDERGROUND STRUCTURES AS SHOWN ARE BASED ON THE BEST INFORMATION AVAILABLE BUT NO GUARANTEE IS GIVEN THAT ALL EXISTING UTILITIES ARE SHOWN OR THAT THE GIVEN LOCATIONS ARE EXACT. CONFIRMATION OF EXISTENCE AND EXACT LOCATION OF ALL SERVICES MUST BE OBTAINED FROM THE INDIVIDUAL UTILITIES BEFORE PROCEEDING WITH CONSTRUCTION.

NO.	REVISIONS	DATE	BY
0	ISSUED FOR TENDER	14.03.24	M.Y.

Stantec
100 - 1355 Taylor Avenue, Winnipeg MB Canada
www.stantec.com

DESIGNED BY: M.Y.	CHECKED BY: M.B.
DRAWN BY: S.L.B.	APPROVED BY:
HOR. SCALE: AS NOTED	RELEASED FOR CONSTRUCTION:
VERTICAL: AS NOTED	DATE: 2014.03.24

ENGINEER'S SEAL

CONSULTANT DRAWING NO. T102

THE CITY OF WINNIPEG
WATER AND WASTE DEPARTMENT
ENGINEERING DIVISION

GREATER WINNIPEG WATER DISTRICT

RAILWAY BRIDGE REPLACEMENT AT MILE 22.15
TRACK WORK
PLAN & PROFILE

SHEET 15 OF 15
CAD FILE DRAWING NUMBER 32050-1-102-800.dwg
CITY DRAWING NUMBER D-13436