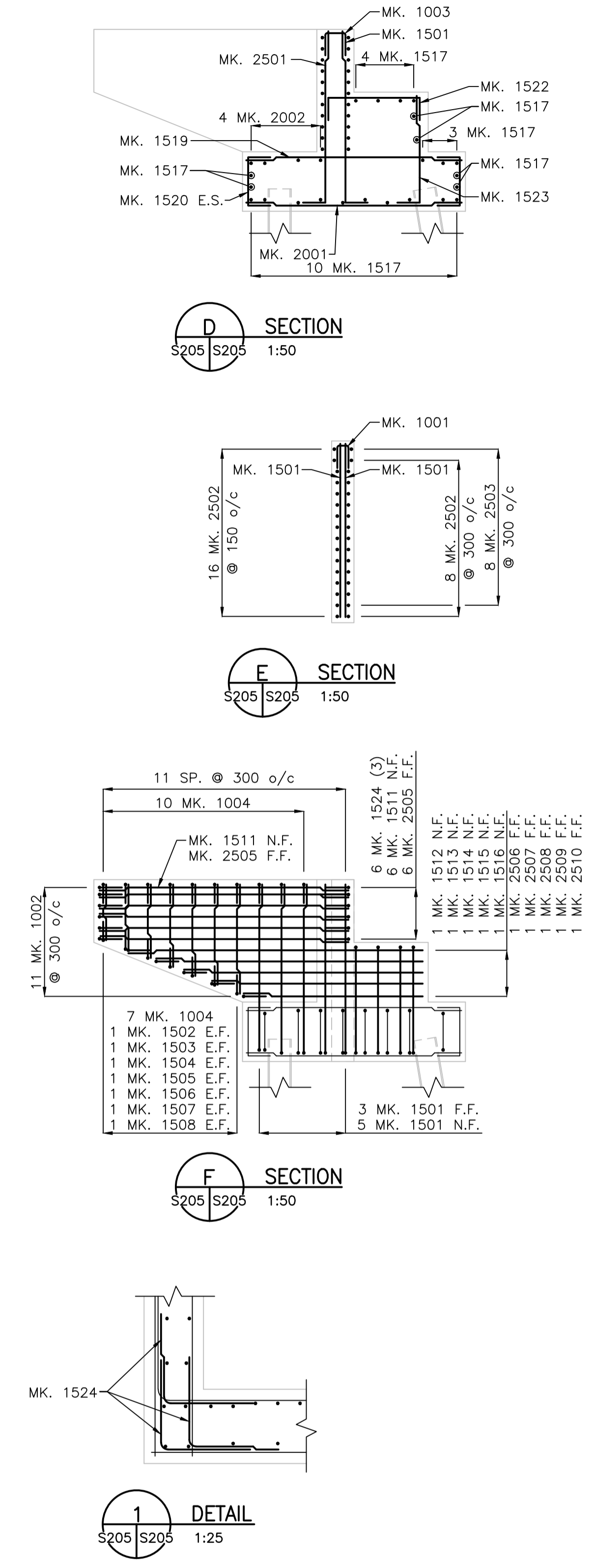
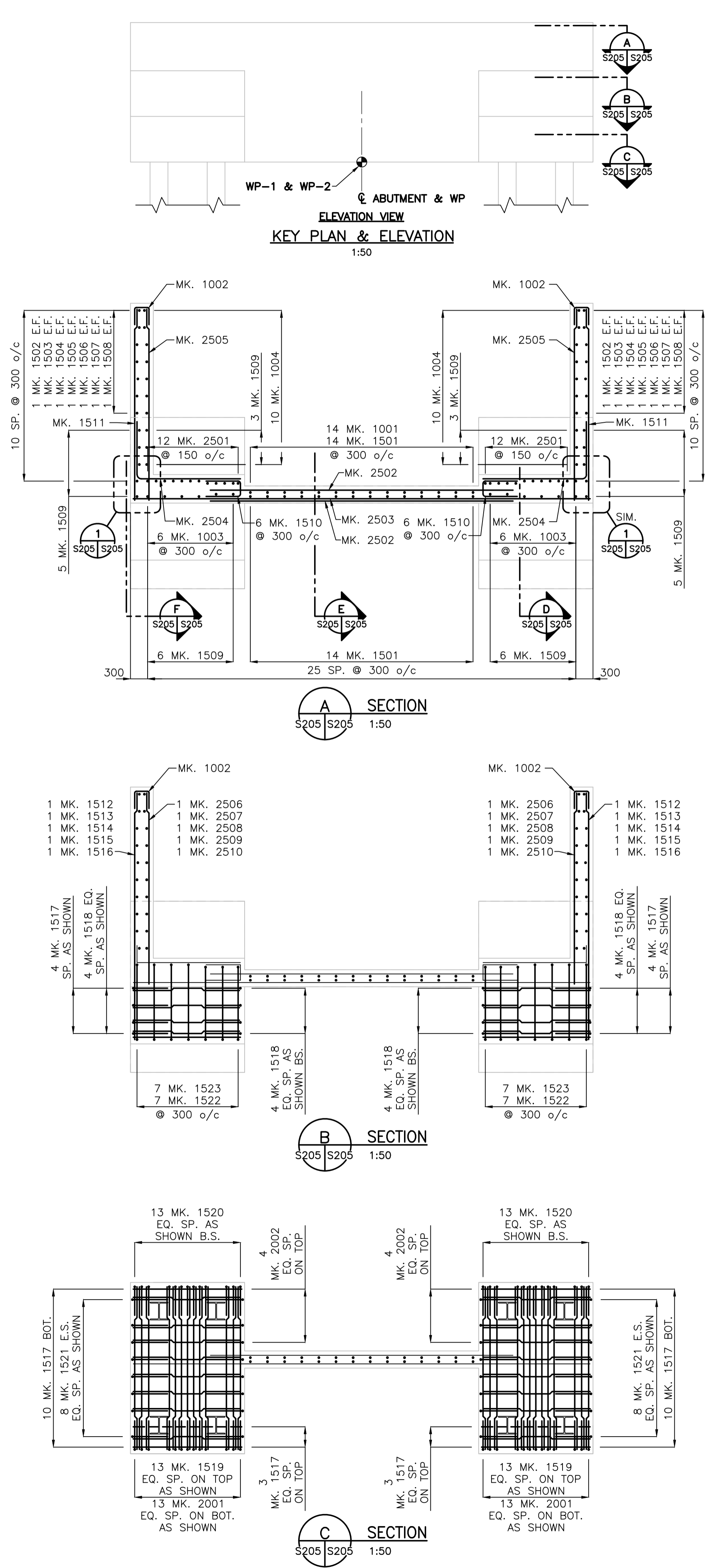
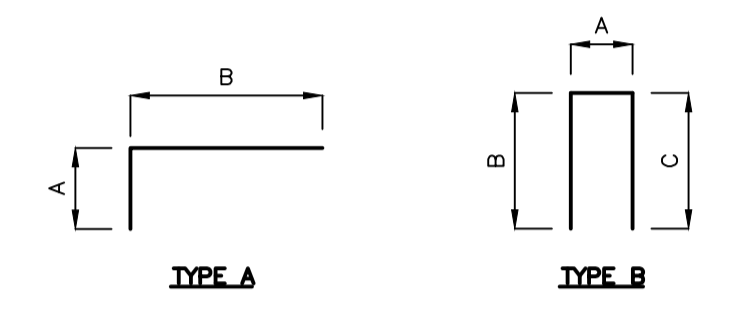


\\c011605-f01\Workgroup\1137\office\113732050\drawing\04_working\shred_files\mils_77.8\32050-s-205-800.dwg
 Date: 2014 Apr 22 10:59pm User: Baramanis, J



BILL OF REINFORCING STEEL											
FOR ABUTMENT SU.1 & SU.2											
STRAIGHT BARS				BENT BARS							
MARK	QTY.	LENGTH (mm)	MASS (kg)	MARK	QTY.	TYPE	A	B	C	LENGTH (mm)	MASS (kg)
1501	28	2300	101.1	1001	14	B	100	300	300	700	7.7
1502	4	750	4.7	1002	22	B	250	300	300	850	14.4
1503	4	870	5.5	1003	12	B	300	300	300	900	8.5
1504	4	990	6.2	1004	34	B	210	300	300	810	21.6
1505	4	1110	7.0								
1506	4	1230	7.7	1509	28	A	300	2300		2600	114.3
1507	4	1350	8.5	1510	12	B	350	600	600	1550	29.2
1508	4	1470	9.2	1518	16	B	1430	600	600	2630	66.1
1511	12	3350	63.1	1520	52	B	650	600	600	1850	151.0
1512	2	2410	7.6	1521	32	B	615	600	600	1815	91.2
1513	2	2835	8.9	1522	14	B	1325	600	600	2525	55.5
1514	2	3210	10.1	1523	14	A	300	1450		1750	38.5
1515	2	3585	11.3	1524	36	A	600	600		1200	67.8
1516	2	3960	12.4								
1517	46	1850	133.6	2501	24	A	300	2300		2600	244.9
1519	26	2850	116.3	2504	32	A	1000	1850		2850	358.0
2001	26	2850	174.5								
2002	8	1850	34.9								
				TOTAL MASS OF REINFORCING STEEL FOR 1 ABUTMENT							2984.7 kg
BAR TYPES											
2502	24	5300	499.3								
2503	8	7950	249.6								
2505	12	3350	157.8								
2506	2	1410	11.1								
2507	2	1835	14.4								
2508	2	2210	17.3								
2509	2	2585	20.3								
2510	2	2962	23.3								



LOCATION APPROVED UNDERGROUND STRUCTURES
 SUPV. U/G STRUCTURES COMMITTEE DATE _____
 NOTE:
 LOCATION OF UNDERGROUND STRUCTURES AS SHOWN ARE BASED ON THE BEST INFORMATION AVAILABLE BUT NO GUARANTEE IS GIVEN THAT ALL EXISTING UTILITIES ARE SHOWN OR THAT THE GIVEN LOCATIONS ARE EXACT. CONFIRMATION OF EXISTENCE AND EXACT LOCATION OF ALL SERVICES MUST BE OBTAINED FROM THE INDIVIDUAL UTILITIES BEFORE PROCEEDING WITH CONSTRUCTION.

B.M. ELEV.			
DESIGNED BY	S.Y.S.	CHECKED BY	M.J.B.
DRAWN BY	J.M.B.	APPROVED BY	M.J.B.
HOR. SCALE:	AS NOTED	RELEASED FOR CONSTRUCTION:	
VERTICAL:		DATE	2014.03.24
NO. REVISIONS		DATE	
0	ISSUED FOR TENDER	14.04.22	J.M.B.

Stantec
 100 - 1355 Taylor Avenue, Winnipeg MB Canada
 www.stantec.com

ENGINEER'S SEAL
 CONSULTANT DRAWING NO.
S205

METRIC
 WHOLE NUMBERS INDICATE MILLIMETRES
 DECIMALIZED NUMBERS INDICATE METRES
 UNLESS INDICATED OTHERWISE

Certificate of Authorization
 Stantec Consulting Ltd.
 No. 1301

THE CITY OF WINNIPEG
 WATER AND WASTE DEPARTMENT
 ENGINEERING DIVISION

GREATER WINNIPEG WATER DISTRICT
 RAILWAY BRIDGE REPLACEMENT AT MILE 77.6
 ABUTMENT REINFORCING
 PLAN & DETAILS

SHEET **7** OF **15**
 CAD FILE DRAWING NUMBER
 32050-s-205-800.dwg
 CITY DRAWING NUMBER
D-13443