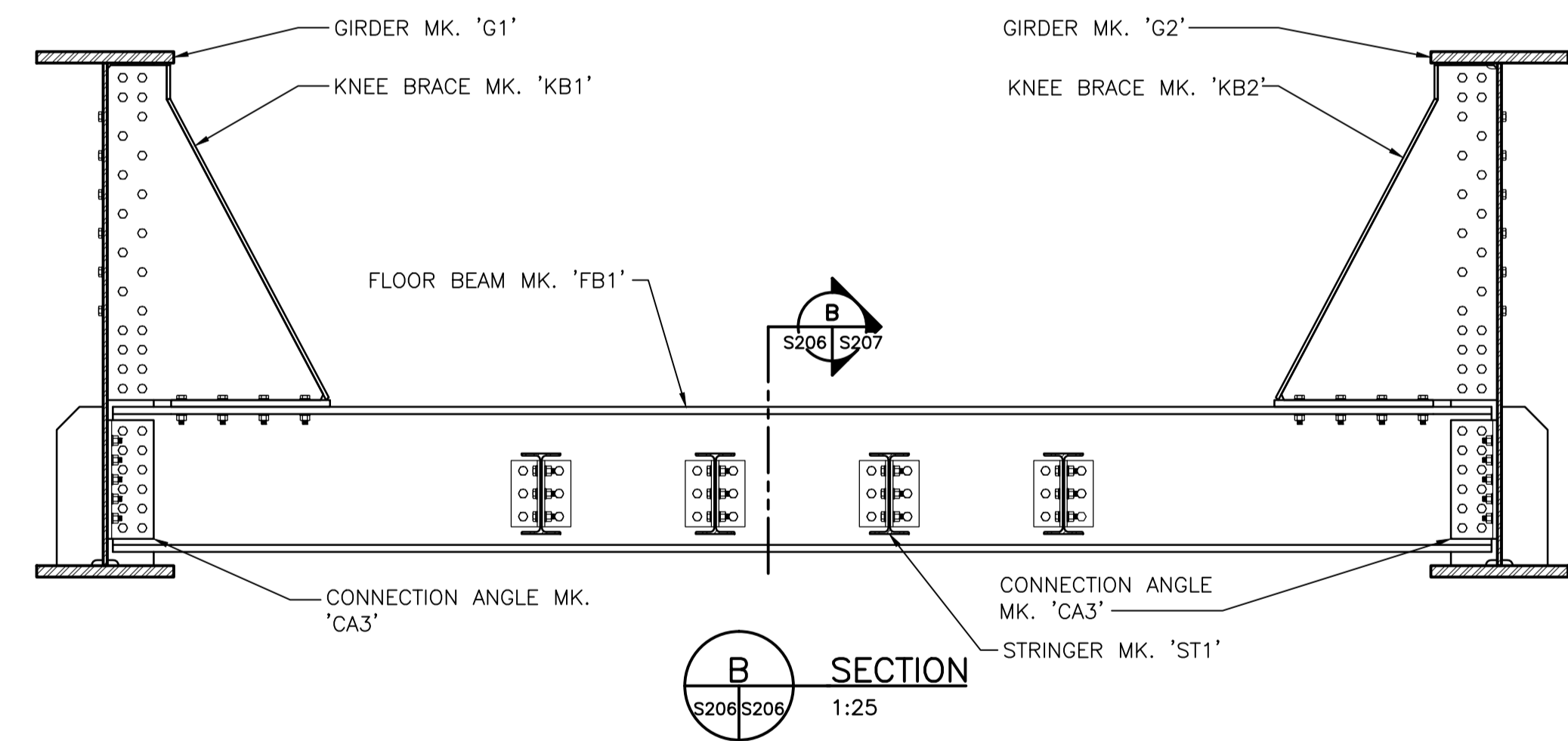
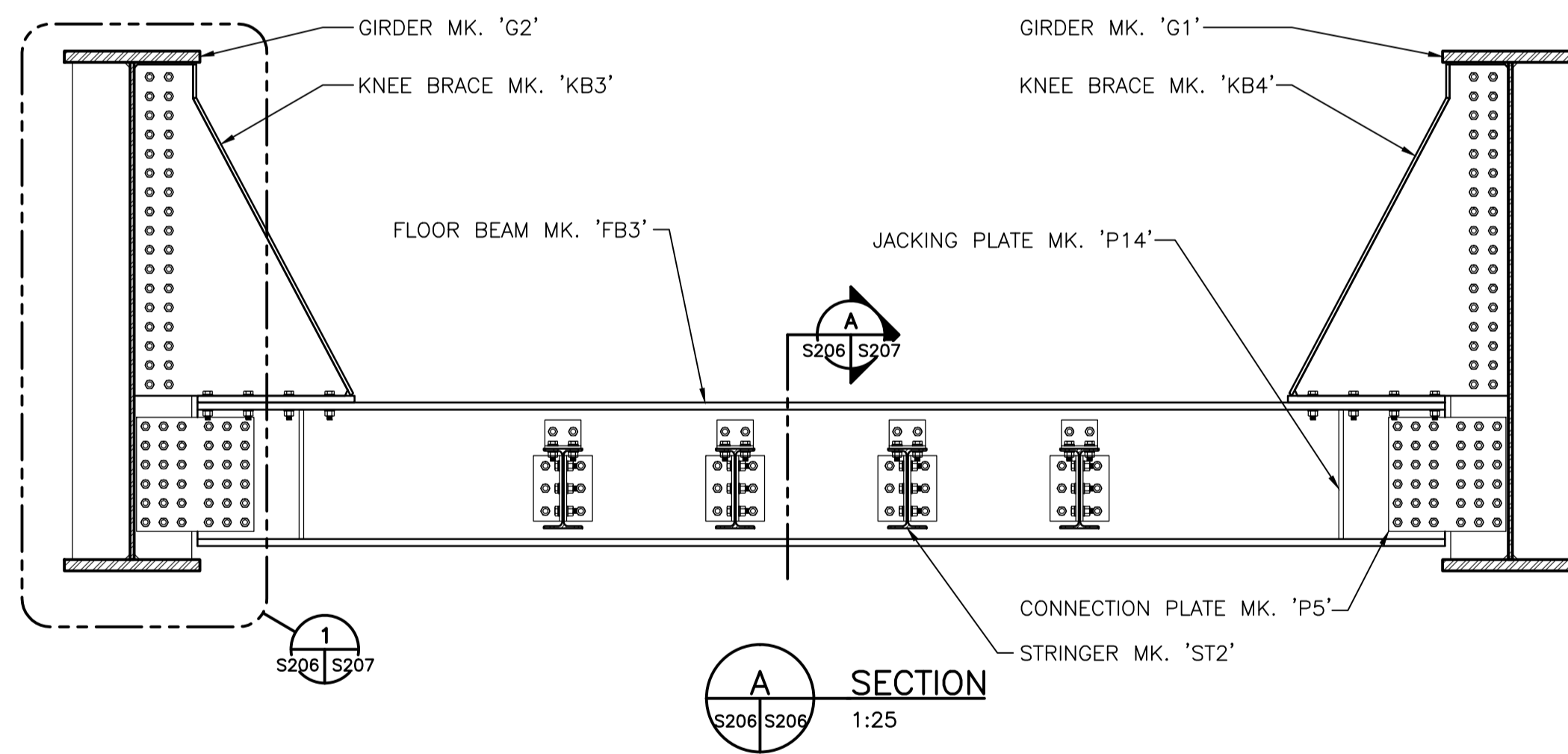


BRIDGE STEEL LAYOUT

1:50

NOTE:

TOP FLANGE OF GIRDERS AND FLOOR BEAMS NOT SHOWN FOR CLARITY



APEGM
Certificate of Authorization
Stantec Consulting Ltd.
No. 1301
METRIC
WHOLE NUMBERS INDICATE MILLIMETRES
DECIMALIZED NUMBERS INDICATE METRES
UNLESS INDICATED OTHERWISE

LOCATION APPROVED UNDERGROUND STRUCTURES

SUPV. U/G STRUCTURES COMMITTEE DATE

NOTE:
LOCATION OF UNDERGROUND STRUCTURES AS SHOWN ARE BASED ON THE BEST INFORMATION AVAILABLE BUT NO GUARANTEE IS GIVEN THAT ALL EXISTING UTILITIES ARE SHOWN OR THAT THE GIVEN LOCATIONS ARE EXACT. CONFIRMATION OF EXISTENCE AND EXACT LOCATION OF ALL SERVICES MUST BE OBTAINED FROM THE INDIVIDUAL UTILITIES BEFORE PROCEEDING WITH CONSTRUCTION.

NO.	REVISIONS	DATE	BY
0	ISSUED FOR TENDER	14.04.22	J.M.B.

B.M. ELEV.	
DESIGNED BY	S.Y.S.
CHECKED BY	M.J.B.
DRAWN BY	J.M.B.
APPROVED BY	M.J.B.
HOR. SCALE:	AS NOTED
VERTICAL:	
RELEASED FOR CONSTRUCTION:	
DATE	2014.03.24

Stantec
100 - 1355 Taylor Avenue, Winnipeg MB Canada
www.stantec.com

ENGINEER'S SEAL

CONSULTANT DRAWING NO. S206

THE CITY OF WINNIPEG
WATER AND WASTE DEPARTMENT
ENGINEERING DIVISION

GREATER WINNIPEG WATER DISTRICT
RAILWAY BRIDGE REPLACEMENT AT MILE 77.6
STEEL LAYOUT & SECTIONS

SHEET 8 OF 15
CAD FILE DRAWING NUMBER 32050-s-206-800.dwg
CITY DRAWING NUMBER D-13444

C:\Users\p56\OneDrive\Work\p56\113732050\drawing\04_working\sheet_files\mils_77.6\32050-s-206-800.dwg
 Date: 2014.03.22 3:05pm User: p56