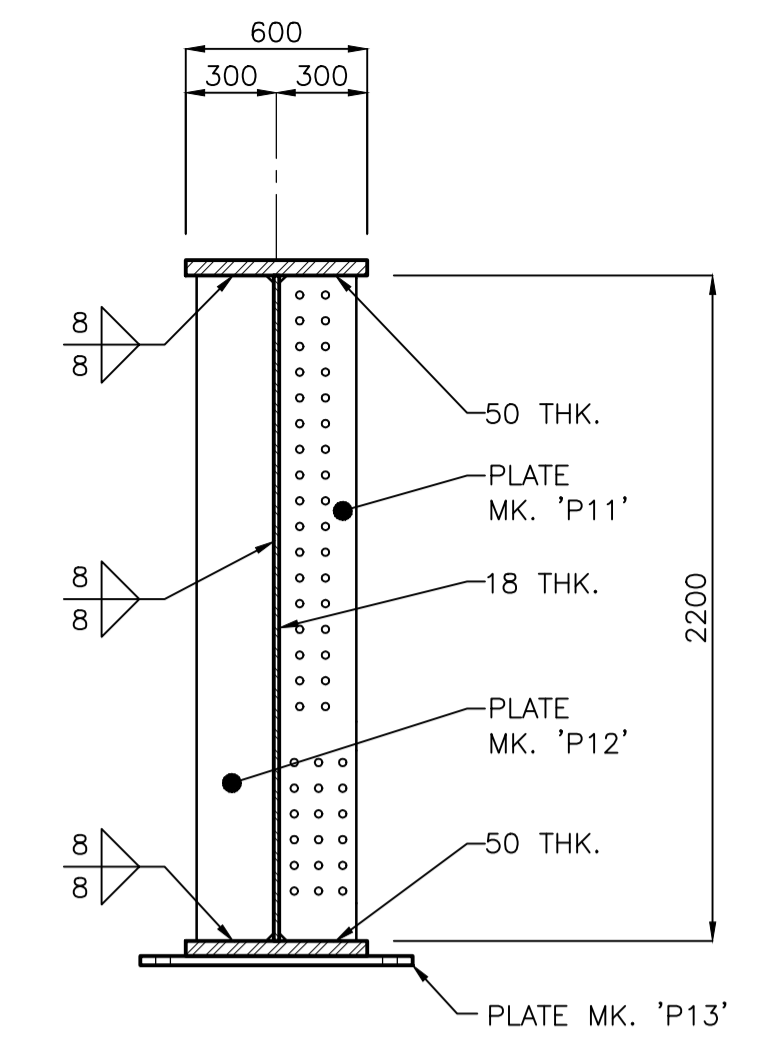
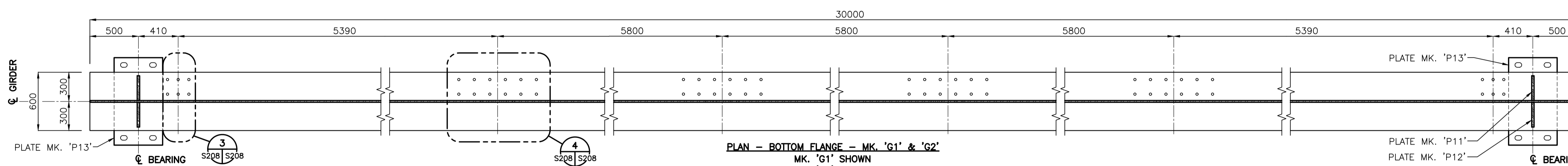


ELEVATION - MK 'G1' & 'G2'  
MK 'G1' SHOWN  
MK 'G2' OPPOSITE

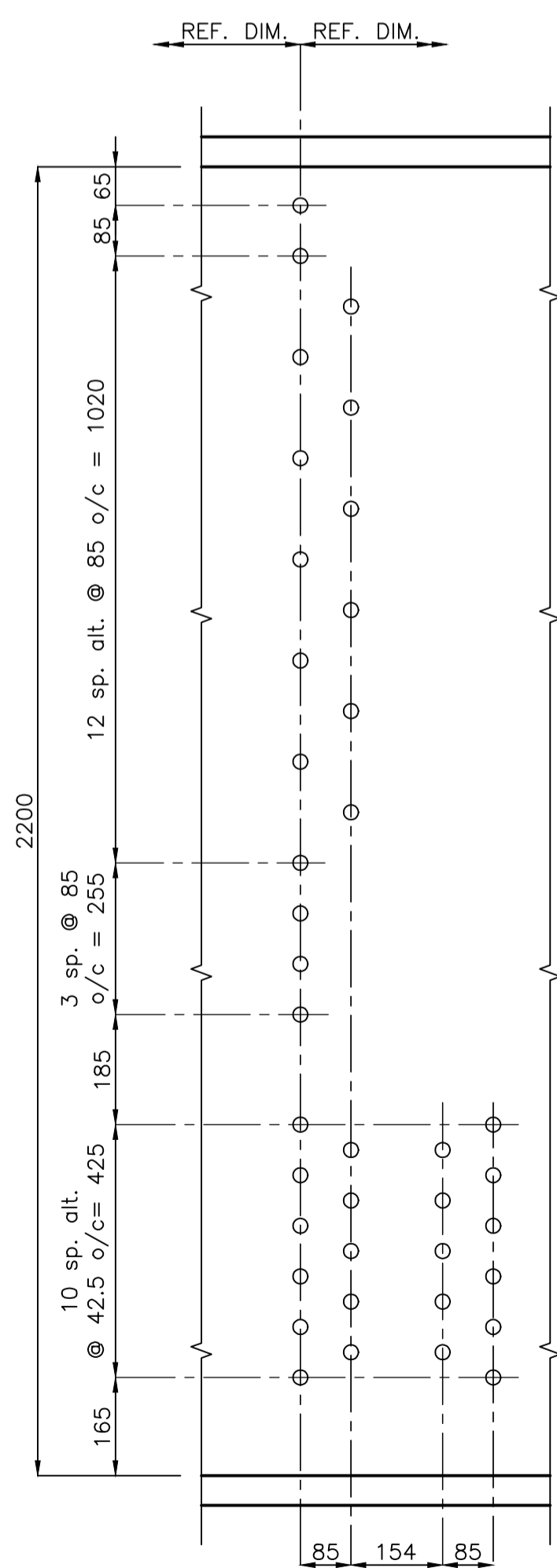


SECTION A-A  
1:25

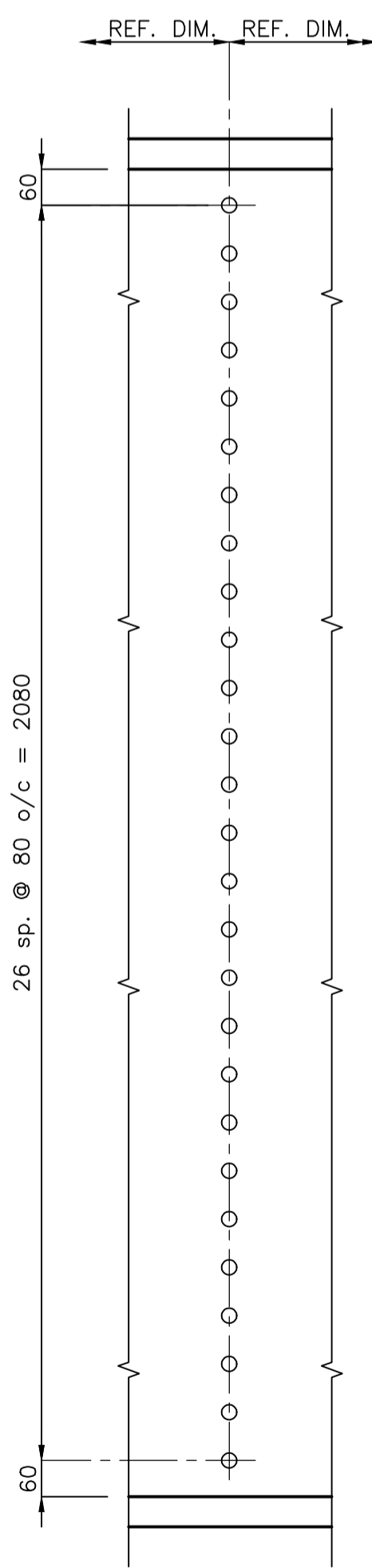


PLAN - BOTTOM FLANGE - MK 'G1' & 'G2'  
MK 'G1' SHOWN  
MK 'G2' OPPOSITE

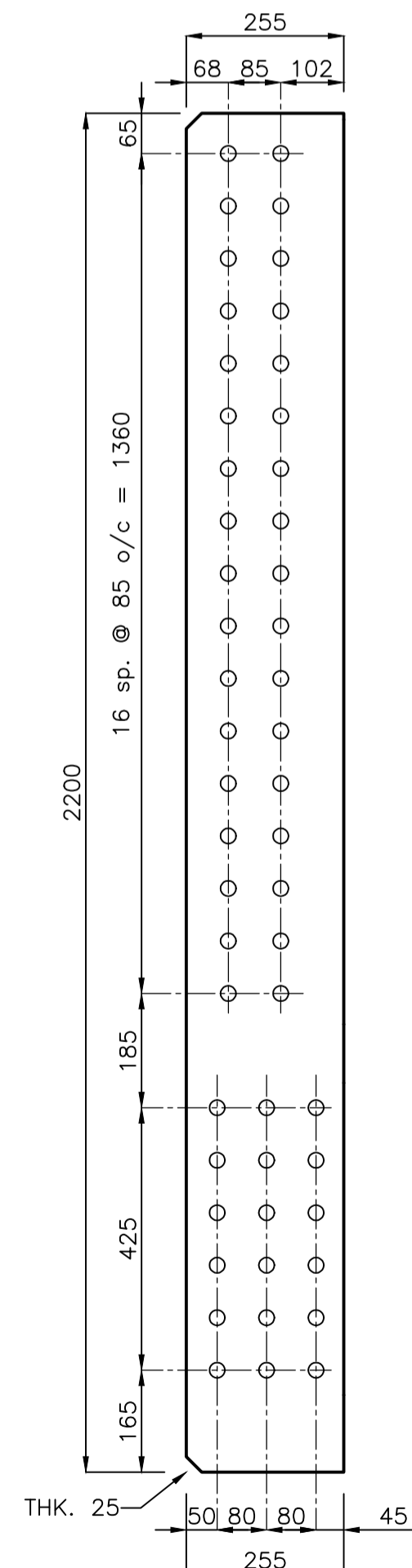
GIRDER - MK 'G1' & 'G2' (FCM)  
1:25



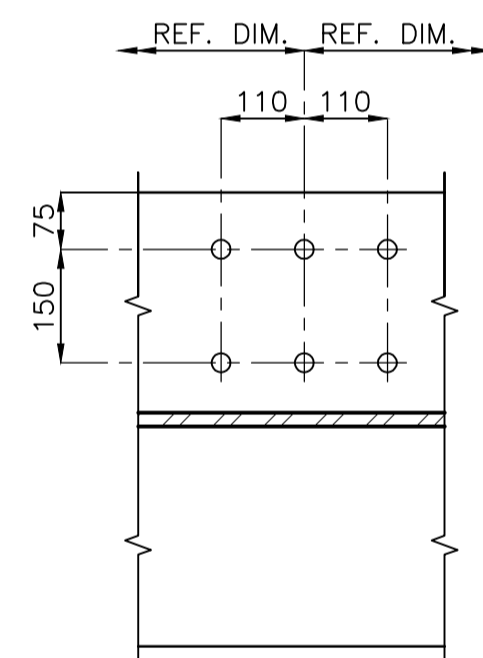
1 DETAIL  
S208 S208 1:10



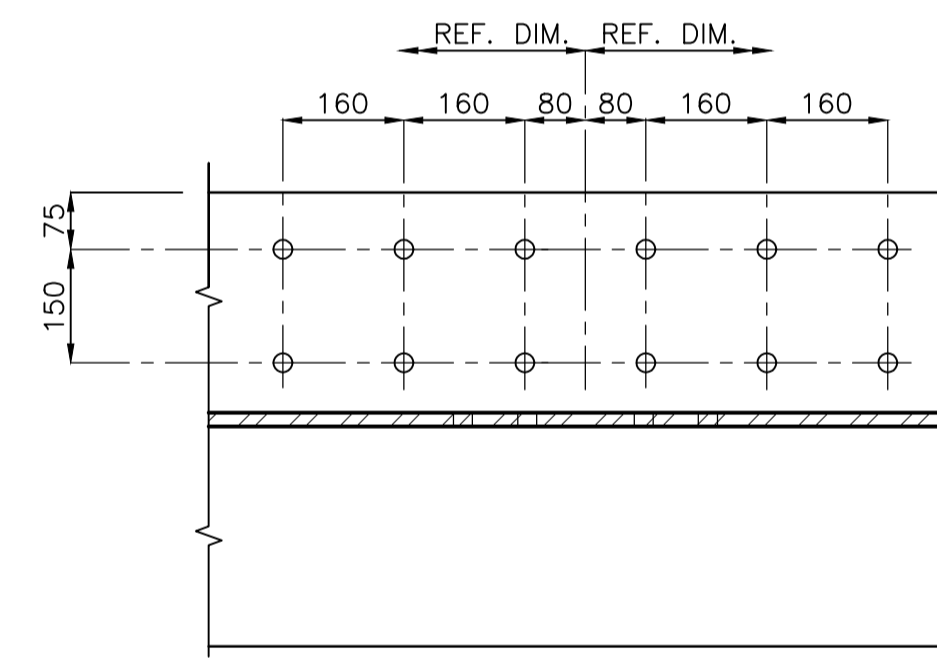
2 DETAIL  
S208 S208 1:10



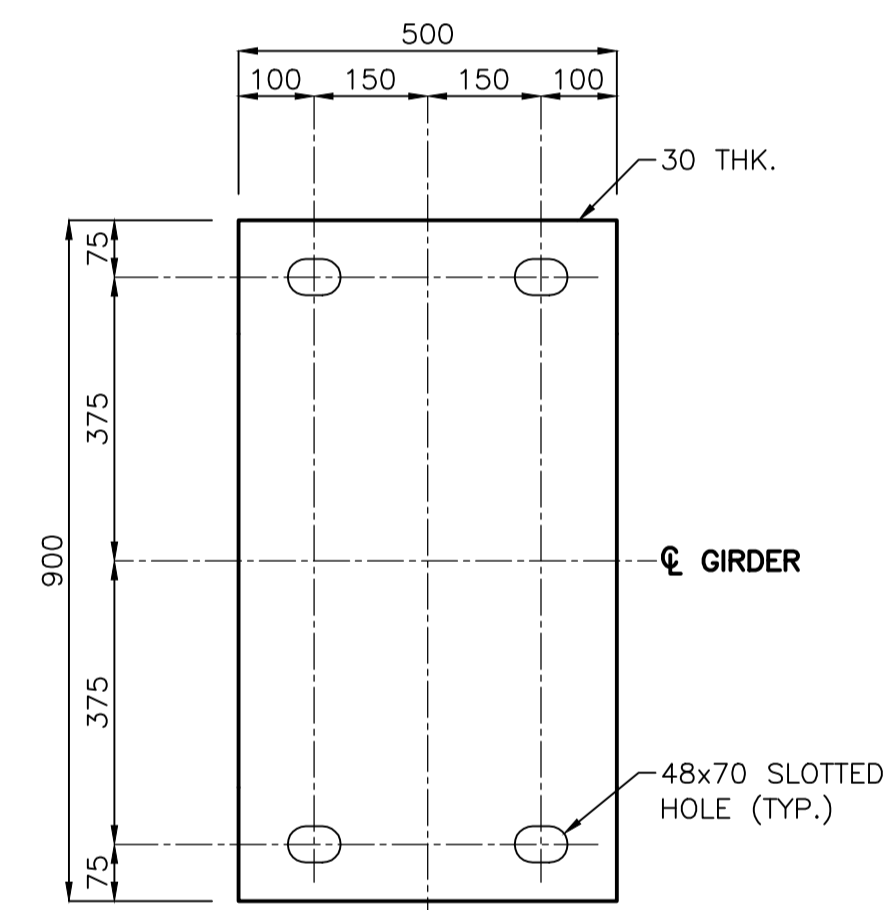
STIFFENER PLATE  
MK. 'P11' & 'P12' (PM)  
1:10  
MK. 'P11' SHOWN  
MK. 'P12' NO HOLES



3 DETAIL  
S208 S208 1:10



4 DETAIL  
S208 S208 1:10



BEARING GIRDER PLATE MK. 'P13'  
1:10



METRIC  
WHOLE NUMBERS INDICATE MILLIMETRES  
DECIMALIZED NUMBERS INDICATE METRES  
UNLESS INDICATED OTHERWISE

LOCATION APPROVED UNDERGROUND STRUCTURES		B.M. ELEV.
SUPV. U/G STRUCTURES COMMITTEE	DATE	
NOTE: LOCATION OF UNDERGROUND STRUCTURES AS SHOWN ARE BASED ON THE BEST INFORMATION AVAILABLE BUT NO GUARANTEE IS GIVEN THAT ALL EXISTING UTILITIES ARE SHOWN OR THAT THE GIVEN LOCATIONS ARE EXACT. CONFIRMATION OF EXISTENCE AND EXACT LOCATION OF ALL SERVICES MUST BE OBTAINED FROM THE INDIVIDUAL UTILITIES BEFORE PROCEEDING WITH CONSTRUCTION.		
NO.	REVISIONS	DATE BY
0	ISSUED FOR TENDER	14.04.22 J.M.B.

DESIGNED BY	S.Y.S.	CHECKED BY	M.J.B.
DRAWN BY	R.A.R./J.M.B.	APPROVED BY	M.J.B.
HOR. SCALE:	AS NOTED	RELEASED FOR CONSTRUCTION:	
VERTICAL:		DATE	2014.03.24

 100 - 1355 Taylor Avenue, Winnipeg MB Canada www.stantec.com		ENGINEER'S SEAL
CONSULTANT DRAWING NO. S208		

 THE CITY OF WINNIPEG WATER AND WASTE DEPARTMENT ENGINEERING DIVISION		SHEET 10 OF 15
GREATER WINNIPEG WATER DISTRICT RAILWAY BRIDGE REPLACEMENT • MILE 77.6 STEEL GIRDER DETAILS		CAD FILE DRAWING NUMBER 32050-s-208-800.dwg
		CITY DRAWING NUMBER D-13446