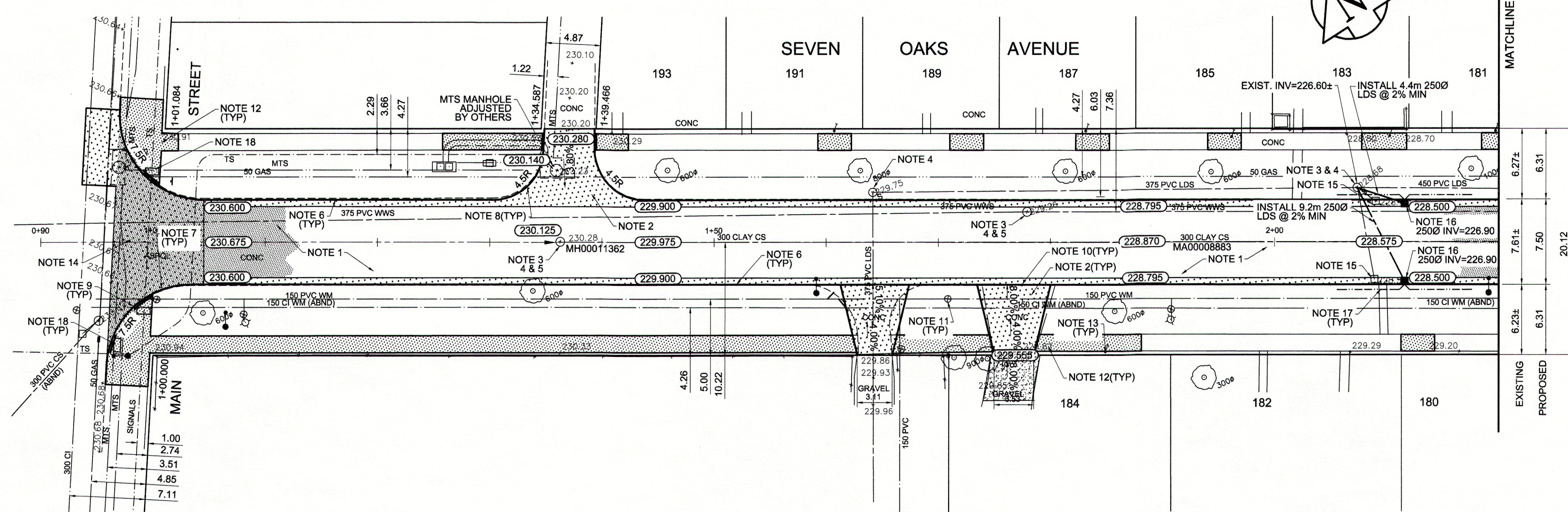


- REFERENCE NOTES**
- PAVEMENT DIMENSIONS ARE TO BACK OF CURB
  - BASELINE IS CENTRE LINE RIGHT-OF-WAY
  - PROPERTY LINES OBTAINED FROM CITY OF WINNIPEG L.B.I.S., AND NO SCALE FACTOR WAS APPLIED
  - REFER TO AECOM FIELD BOOK NO. 4806

- CONSTRUCTION NOTES**
- REMOVE EXISTING CONCRETE PAVEMENT AND CONSTRUCT NEW ASPHALTIC PAVEMENT TYPE 1A (AVG THICKNESS 100mm)
  - REMOVE EXISTING CONCRETE PAVEMENT AND CONSTRUCT NEW 150mm REINFORCED CONCRETE PAVEMENT
  - REMOVE EXISTING FRAME AND COVER AND INSTALL NEW FRAME AND COVER (AP-005 AND AP-004)
  - ADJUST EXISTING MANHOLE/CATCH BASIN TO GRADE
  - INSTALL NEW CAST IRON RISER RING
  - CONSTRUCT NEW BARRIER CURB AND GUTTER (180mm HT.)
  - REMOVE EXISTING CURB AND CONSTRUCT NEW MODIFIED BARRIER CURB (150mm REVEAL HT. DOWELLED)
  - CONSTRUCT NEW MODIFIED BARRIER CURB (180mm REVEAL HT. INTEGRAL)
  - CONSTRUCT NEW CURB RAMP (10mm REVEAL HT. INTEGRAL)
  - CONSTRUCT NEW LIP CURB AND GUTTER (40mm HT. INTEGRAL)
  - ADJUST EXISTING WATER VALVE TO GRADE
  - RENEW EXISTING 100mm CONCRETE SIDEWALK
  - ADJUST EXISTING CURB STOP TO GRADE
  - REMOVE EXISTING CONCRETE PAVEMENT AND CONSTRUCT NEW 150mm REINFORCED CONCRETE PAVEMENT AND PLACE NEW ASPHALTIC PAVEMENT TYPE 1A (THICKNESS 65mm)
  - REMOVE EXISTING CATCHBASIN AND ABANDON LEAD
  - INSTALL NEW CURB AND GUTTER INLET c/w CATCHBASIN (SD-024) AND CONNECT TO EXISTING MANHOLE
  - REGRADE EXISTING PATIO BLOCKS
  - INSTALL DETECTABLE WARNING SURFACE TILE
  - INSTALL 150mm SUBDRAINS



EXISTING	LEGEND - PLAN	PROPOSED	EXISTING	LEGEND - PLAN	PROPOSED	EXISTING	LEGEND - PROFILE	PROPOSED
150 mm W.M.	WATERMAIN	150 mm W.M.	HYDRO	---	---	X	C PROFILE	---
Hydrant	HYDRANT	Hydrant	M.T.S.	---	---	□	NORTHWEST GUTTER	---
Valve	VALVE	Valve	CONCRETE	---	---	○	SOUTHWEST GUTTER	---
300mm L.O.S.	LAND DRAINAGE SEWER	300mm L.O.S.	ASPHALT	---	---	◇	N/W PROPERTY LINE	---
250mm W.W.S.	WASTEWATER SEWER	250mm W.W.S.	PROPERTY LINE	---	---	○	S/E PROPERTY LINE	---
Manhole	MANHOLE	Manhole	SURVEY BAR	---	---	○		---
Catch Basin	CATCH BASIN	Catch Basin	ELEVATION	---	---	○		---
Catch Pit	CATCH PIT	Catch Pit	TREE	---	---	○		---
Junctions	JUNCTIONS	Junctions	SIDEWALK RAMP	---	---	○		---
Culvert	CULVERT	Culvert	CONCRETE SIDEWALK	---	---	○		---
Gas	GAS	Gas	FENCE	---	---	○		---

**LOCATION APPROVED UNDERGROUND STRUCTURES**

SUPV. U/G STRUCTURES COMMITTEE	DATE

**NOTE:**  
LOCATION OF UNDERGROUND STRUCTURES AS SHOWN ARE BASED ON THE BEST INFORMATION AVAILABLE. BUT NO GUARANTEE IS GIVEN THAT ALL EXISTING UTILITIES ARE SHOWN OR THAT THE GIVEN LOCATIONS ARE EXACT. CONFIRMATION OF EXISTENCE AND EXACT LOCATION OF ALL SERVICES MUST BE OBTAINED FROM THE INDIVIDUAL UTILITIES BEFORE PROCEEDING WITH CONSTRUCTION.

B.M. 85R502 Tbt in median Main St & Jefferson Ave, 8.7m S of Cl. Jefferson Ave produced from W. & 2.6m W of E curb left turn lane, E side Main St

NO.	ISSUED FOR TENDER	DATE	BY
0	ISSUED FOR TENDER	03/11/2014	BC
A	ISSUED FOR REVIEW	02/28/2014	BC

**AECOM**

DESIGNED BY: BC/SS  
CHECKED BY: KWR

DRAWN BY: PB/RT  
APPROVED BY: [Signature]

HOR. SCALE: 1:250  
VERTICAL: 1:10

RELEASED FOR CONSTRUCTION BY: [Signature]  
DATE: March 10/14

**THE CITY OF WINNIPEG**  
PUBLIC WORKS DEPARTMENT  
ENGINEERING DIVISION

2014 LOCAL STREET RENEWAL PROGRAM

SEVEN OAKS AVENUE- MAIN STREET-JONES STREET ASPHALT RECONSTRUCTION MAIN STREET TO STATION 2+20

CITY DRAWING NUMBER: SHEET 01 OF 20



**METRIC**  
WHOLE NUMBERS INDICATE MILLIMETRES  
DECIMALIZED NUMBERS INDICATE METRES