

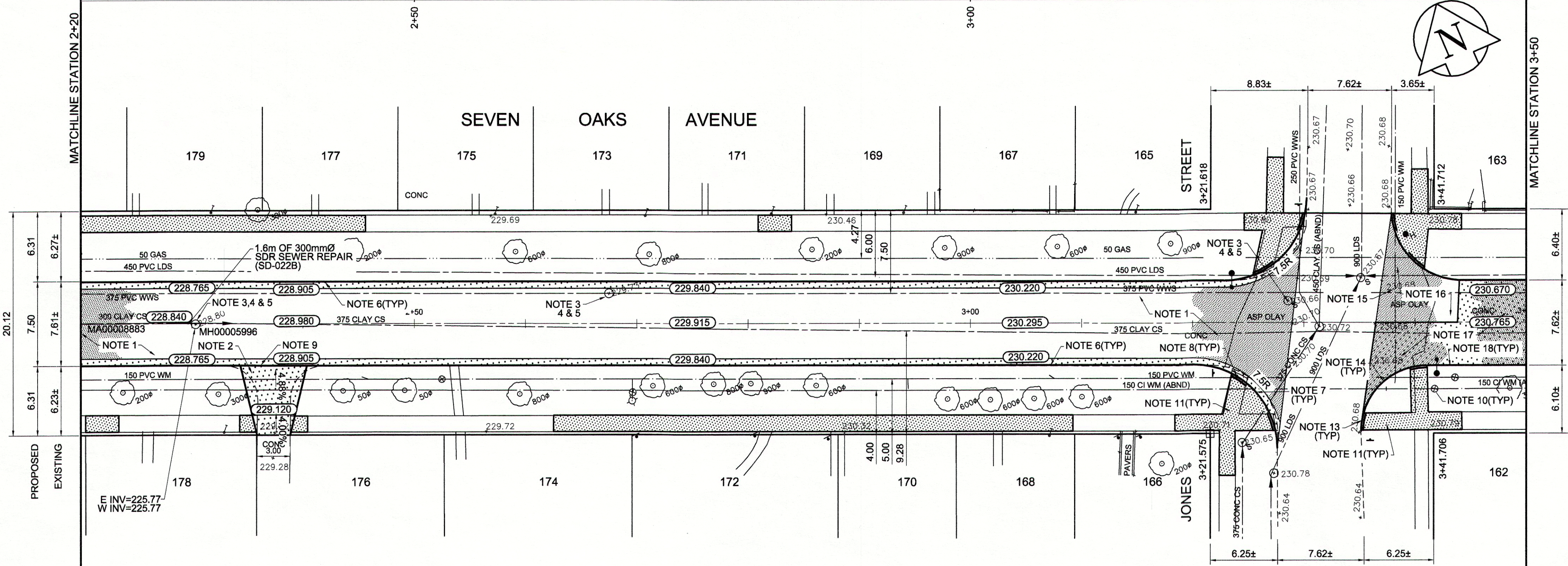
TYPICAL CROSS SECTION

REFERENCE NOTES

- A. PAVEMENT DIMENSIONS ARE TO BACK OF CURB
- B. BASELINE IS CENTRE LINE RIGHT-OF-WAY
- C. PROPERTY LINES OBTAINED FROM CITY OF WINNIPEG L.B.I.S., AND NO SCALE FACTOR WAS APPLIED
- D. REFER TO AECOM FIELD BOOK NO. 4806

CONSTRUCTION NOTES

1. REMOVE EXISTING CONCRETE PAVEMENT AND CONSTRUCT NEW ASPHALTIC PAVEMENT TYPE 1A (AVG THICKNESS 100mm)
2. REMOVE EXISTING CONCRETE PAVEMENT AND CONSTRUCT NEW 150mm REINFORCED CONCRETE PAVEMENT
3. REMOVE EXISTING FRAME AND COVER AND INSTALL NEW FRAME AND COVER (AP-005 AND AP-004)
4. ADJUST EXISTING MANHOLE/CATCH BASIN TO GRADE
5. INSTALL NEW CAST IRON RISER RING
6. CONSTRUCT NEW BARRIER CURB AND GUTTER (180mm HT.)
7. CONSTRUCT NEW MODIFIED BARRIER CURB AND GUTTER (180mm HT.)
8. CONSTRUCT NEW CURB RAMP AND GUTTER (10mm HT. INTEGRAL)
9. CONSTRUCT NEW LIP CURB AND GUTTER (40mm HT. INTEGRAL)
10. ADJUST EXISTING WATER VALVE TO GRADE
11. RENEW EXISTING 100mm CONCRETE SIDEWALK
12. ADJUST EXISTING CURB STOP
13. CONSTRUCT NEW CURB RAMP (10mm REVEAL HT. MONOLITHIC)
14. CONSTRUCT NEW MODIFIED BARRIER CURB (150mm REVEAL HT. SEPARATE)
15. REMOVE EXISTING ASPHALT OVERLAY
16. PLACE NEW ASPHALTIC PAVEMENT TYPE 1A (AVG THICKNESS 100mm)
17. REMOVE EXISTING CONCRETE PAVEMENT AND CONSTRUCT NEW 150mm REINFORCED CONCRETE PAVEMENT ON 100mm ASPHALT OVERLAY
18. CONSTRUCT NEW BARRIER CURB (150mm REVEAL HT. SEPARATE)



METRIC
WHOLE NUMBERS INDICATE MILLIMETRES
DECIMALIZED NUMBERS INDICATE METRES

EXISTING	LEGEND - PLAN	PROPOSED	EXISTING	LEGEND - PLAN	PROPOSED	EXISTING	LEGEND - PROFILE	PROPOSED
150 mm W.M.	WATERMAIN	150 mm W.M.	---	HYDRO	---	X	C PROFILE	---
300mm L.D.S.	LAND DRAINAGE SEWER	300mm L.D.S.	---	CONCRETE	---	□	NORTHWEST GUTTER	---
250mm W.W.S.	WASTEWATER SEWER	250mm W.W.S.	---	ASPHALT	---	○	SOUTHEAST GUTTER	---
○	MANHOLE	●	---	PROPERTY LINE	---	◇	N/W PROPERTY LINE	---
□	CATCH BASIN	■	---	SURVEY BAR	---	○	S/E PROPERTY LINE	---
▽	CATCH PIT	▽	---	ELEVATION	(35.750)			
---	JUNCTIONS	---	---	TREE	---			
---	CULVERT	---	---	CONCRETE SIDEWALK	---			
---	GAS	---	---	FENCE	---			

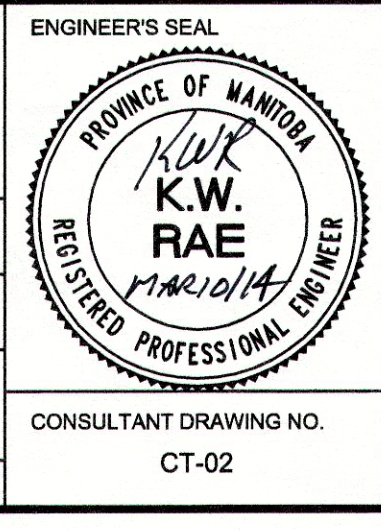
LOCATION APPROVED
UNDERGROUND STRUCTURES

SUPV. U/G STRUCTURES COMMITTEE DATE

NOTE:
LOCATION OF UNDERGROUND STRUCTURES AS SHOWN ARE BASED ON THE BEST INFORMATION AVAILABLE, BUT NO GUARANTEE IS GIVEN THAT ALL EXISTING UTILITIES ARE SHOWN OR THAT THE GIVEN LOCATIONS ARE EXACT. CONFIRMATION OF EXISTENCE AND EXACT LOCATION OF ALL SERVICES MUST BE OBTAINED FROM THE INDIVIDUAL UTILITIES BEFORE PROCEEDING WITH CONSTRUCTION.

B.M. ELEV.	85R502 231.170	Tilt in median Main St & Jefferson Ave, 8.7m S of CL Jefferson Ave produced from W. & 2.6m W of E curb left turn lane, E side Main St	
NO.	REVISIONS	DATE	BY
0	ISSUED FOR TENDER	03/11/2014	BC
A	ISSUED FOR REVIEW	02/28/2014	BC

DESIGNED BY	BC/SS	CHECKED BY	KWR
DRAWN BY	PB/RT	APPROVED BY	
HOR. SCALE:	1:250	RELEASED FOR CONSTRUCTION BY:	
VERTICAL:	1:10	DATE:	March 10/14

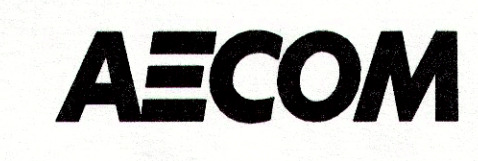


THE CITY OF WINNIPEG
PUBLIC WORKS DEPARTMENT
ENGINEERING DIVISION

2014 LOCAL STREET RENEWAL PROGRAM

SEVEN OAKS AVENUE - MAIN STREET-JONES STREET ASPHALT RECONSTRUCTION/REHABILITATION STATION 2+20 TO STATION 3+50

CITY DRAWING NUMBER SHEET 02 OF 20



CONSULTANT DRAWING NO. CT-02