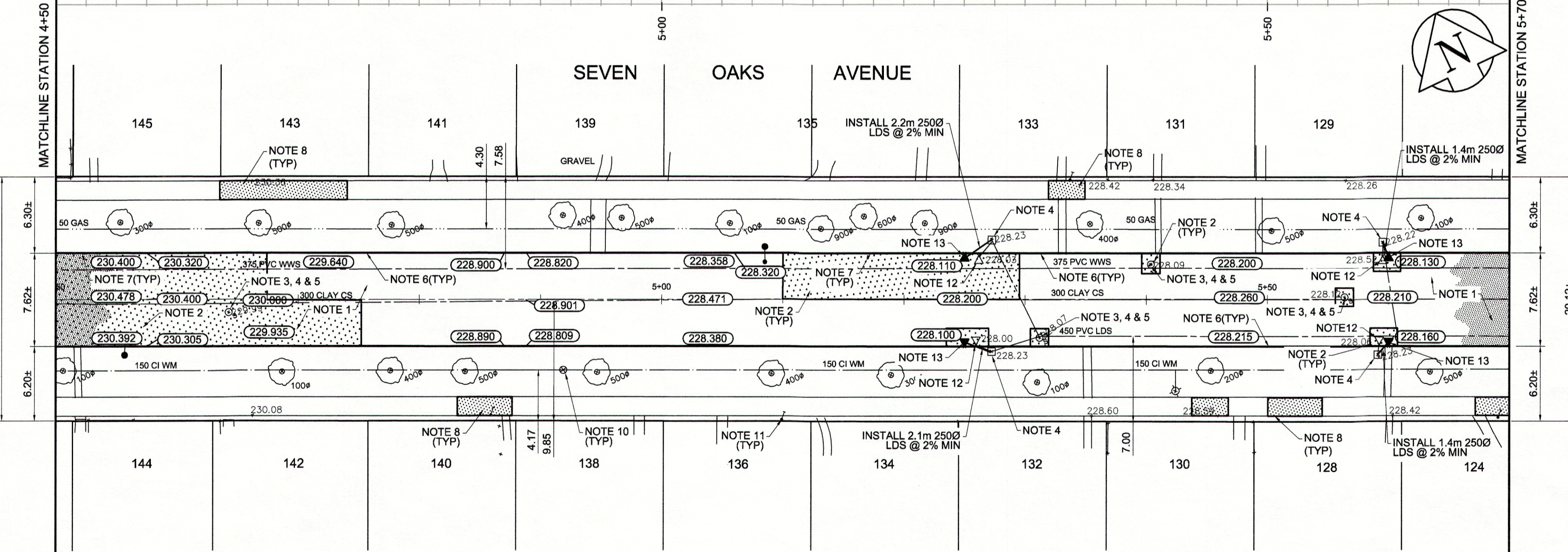


230.50  
230.00  
229.50  
229.00  
228.50  
228.00

- REFERENCE NOTES**
- PAVEMENT DIMENSIONS ARE TO BACK OF CURB
  - BASELINE IS CENTRE LINE RIGHT-OF-WAY
  - PROPERTY LINES OBTAINED FROM CITY OF WINNIPEG L.B.I.S., AND NO SCALE FACTOR WAS APPLIED
  - REFER TO AECOM FIELD BOOK NO. 4806

- CONSTRUCTION NOTES**
- PLACE NEW ASPHALTIC PAVEMENT TYPE1A (AVG THICKNESS 100mm)
  - REMOVE EXISTING CONCRETE PAVEMENT AND CONSTRUCT NEW 150mm REINFORCED CONCRETE PAVEMENT *c/w* 100mm ASPHALT OVERLAY
  - REMOVE EXISTING FRAME AND COVER AND INSTALL NEW FRAME AND COVER (AP-005 AND AP-004)
  - ADJUST EXISTING MANHOLE/CATCH BASIN TO GRADE
  - INSTALL NEW CAST IRON RISER RING
  - REMOVE EXISTING CURB AND CONSTRUCT NEW BARRIER CURB (150mm REVEAL HT. DOWELLED)
  - CONSTRUCT NEW BARRIER CURB (150mm REVEAL HT. SEPARATE)
  - RENEW EXISTING 100mm CONCRETE SIDEWALK
  - REGRADE EXISTING PATIO BLOCKS
  - ADJUST EXISTING WATER VALVE TO GRADE
  - ADJUST EXISTING CURB STOP
  - REMOVE EXISTING CATCHPIT AND ABANDON LEAD
  - INSTALL NEW CURB AND GUTTER INLET *c/w* CATCHPIT (SD-023) AND CONNECT TO EXISTING CATCHBASIN



MATCHLINE STATION 4+50  
MATCHLINE STATION 5+70



**METRIC**  
WHOLE NUMBERS INDICATE MILLIMETRES  
DECIMALIZED NUMBERS INDICATE METRES

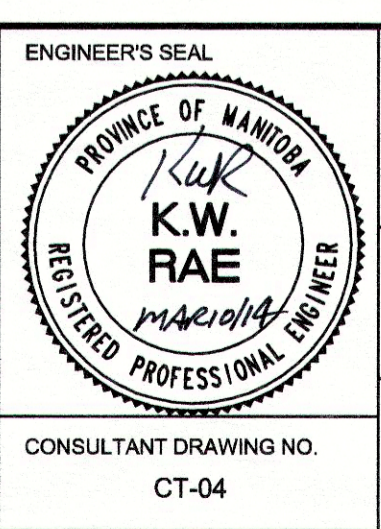
EXISTING	LEGEND - PLAN	PROPOSED	EXISTING	LEGEND - PLAN	PROPOSED	EXISTING	LEGEND - PROFILE	PROPOSED
150 mm W.M.	WATERMAIN	150 mm W.M.	---	HYDRO	---	---	C PROFILE	---
Hydrant	HYDRANT	Hydrant	---	M.T.S.	---	---	NORTHWEST GUTTER	---
Valve	VALVE	Valve	---	CONCRETE	---	---	SOUTHEAST GUTTER	---
300mm L.D.S.	LAND DRAINAGE SEWER	300mm L.D.S.	---	ASPHALT	---	---	N/W PROPERTY LINE	---
250mm W.W.S.	WASTEWATER SEWER	250mm W.W.S.	---	PROPERTY LINE	---	---	S/E PROPERTY LINE	---
Manhole	MANHOLE	Manhole	---	SURVEY BAR	---	---		
Catch Basin	CATCH BASIN	Catch Basin	---	ELEVATION	---	---		
Catch Pit	CATCH PIT	Catch Pit	---	TREE	---	---		
Junctions	JUNCTIONS	Junctions	---	SIDEWALK RAMP	---	---		
Culvert	CULVERT	Culvert	---	CONCRETE SIDEWALK	---	---		
Gas	GAS	Gas	---	FENCE	---	---		

**LOCATION APPROVED UNDERGROUND STRUCTURES**

SUPV. U/G STRUCTURES COMMITTEE DATE

**NOTE:**  
LOCATION OF UNDERGROUND STRUCTURES AS SHOWN ARE BASED ON THE BEST INFORMATION AVAILABLE. BUT NO GUARANTEE IS GIVEN THAT ALL EXISTING UTILITIES ARE SHOWN OR THAT THE GIVEN LOCATIONS ARE EXACT. CONFIRMATION OF EXISTENCE AND EXACT LOCATION OF ALL SERVICES MUST BE OBTAINED FROM THE INDIVIDUAL UTILITIES BEFORE PROCEEDING WITH CONSTRUCTION.

B.M. 85R502	Tilt in median Main St & Jefferson Ave, 8.7m S of Cl. Jefferson Ave produced from W. & 2.6m W of E curb left turn lane, E side Main St
ELEV. 231.170	
DESIGNED BY	BC/SS
CHECKED BY	KWR
DRAWN BY	PB/RT
APPROVED BY	
HOR. SCALE:	1:250
VERTICAL:	1:10
ISSUED FOR TENDER	03/11/2014 BC
ISSUED FOR REVIEW	02/28/2014 BC
NO. REVISIONS	DATE BY



**THE CITY OF WINNIPEG**  
PUBLIC WORKS DEPARTMENT  
ENGINEERING DIVISION

2014 LOCAL STREET RENEWAL PROGRAM

SEVEN OAKS AVENUE-JONES STREET- SCOTIA STREET REHABILITATION  
STATION 4+50 TO STATION 5+70

CITY DRAWING NUMBER  
SHEET 04 OF 20

CONSULTANT DRAWING NO. CT-04

RELEASED FOR CONSTRUCTION BY: *[Signature]*  
DATE: March 10/14