

- REFERENCE NOTES**
- A. PAVEMENT DIMENSIONS ARE TO BACK OF CURB
 - B. BASELINE IS CENTRE LINE RIGHT-OF-WAY
 - C. PROPERTY LINES OBTAINED FROM CITY OF WINNIPEG L.B.I.S., AND NO SCALE FACTOR WAS APPLIED
 - D. REFER TO AECOM FIELD BOOK NO. 4805

- CONSTRUCTION NOTES**
1. REMOVE EXISTING ASPHALTIC PAVEMENT AND PLACE NEW ASPHALTIC PAVEMENT TYPE 1A (AVG THICKNESS 85mm)
 2. REMOVE EXISTING CONCRETE PAVEMENT AND CONSTRUCT NEW 150mm REINFORCED CONCRETE PAVEMENT c/w 85mm ASPHALT OVERLAY
 3. ADJUST EXISTING MANHOLE/CATCH BASIN TO GRADE
 4. RENEW BARRIER CURB (100mm REVEAL HT. DOWELLED)
 5. REMOVE EXISTING CURB AND CONSTRUCT NEW MODIFIED BARRIER CURB (100mm REVEAL HT. DOWELLED)
 6. CONSTRUCT NEW CURB RAMP (10mm HT. MONOLITHIC)
 7. RENEW EXISTING 100mm CONCRETE SIDEWALK
 8. ADJUST EXISTING WATER VALVE TO GRADE
 9. REMOVE EXISTING INLET AND INSTALL NEW CURB AND GUTTER INLET c/w CATCHPIT (SD-023) AND CONNECT TO EXISTING CATCHBASIN
 10. INSTALL NEW BARRIER CURB (100mm REVEAL HT. SEPARATE)



METRIC
WHOLE NUMBERS INDICATE MILLIMETRES
DECIMALIZED NUMBERS INDICATE METRES

150 mm W.M.	WATERMAIN	150 mm W.M.	HYDRO	— x —	C PROFILE
⊕	HYDRANT	⊕	M.T.S.	— □ —	NORTH/WEST GUTTER
⊙	VALVE	⊙	CONCRETE	— ○ —	SOUTHWEST GUTTER
300mm L.D.S.	LAND DRAINAGE SEWER	300mm L.D.S.	ASPHALT	— ◇ —	N/W PROPERTY LINE
250mm W.W.S.	WASTEWATER SEWER	250mm W.W.S.	PROPERTY LINE	— ○ —	S/E PROPERTY LINE
○	MANHOLE	⊕	SURVEY BAR		
□	CATCH BASIN	⊕	ELEVATION	(35.750)	
▽	CATCH PIT	⊕	TREE		
+	JUNCTIONS	+	SIDEWALK RAMP		
—	CULVERT	—	CONCRETE SIDEWALK		
—	GAS	—	FENCE		
EXISTING	LEGEND - PLAN	PROPOSED	EXISTING	LEGEND - PLAN	PROPOSED
EXISTING	LEGEND - PROFILE	PROPOSED	EXISTING	LEGEND - PROFILE	PROPOSED

LOCATION APPROVED UNDERGROUND STRUCTURES

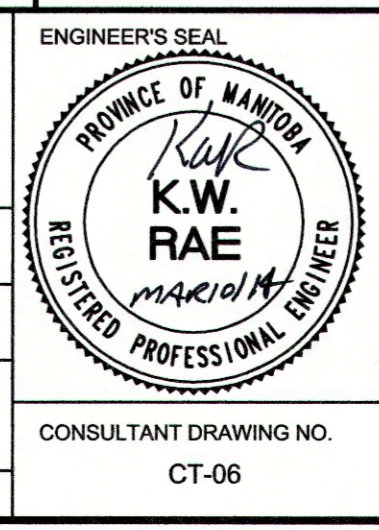
SUPV. U/G STRUCTURES COMMITTEE DATE

NOTE:
LOCATION OF UNDERGROUND STRUCTURES AS SHOWN ARE BASED ON THE BEST INFORMATION AVAILABLE, BUT NO GUARANTEE IS GIVEN THAT ALL EXISTING UTILITIES ARE SHOWN OR THAT THE GIVEN LOCATIONS ARE EXACT. CONFIRMATION OF EXISTENCE AND EXACT LOCATION OF ALL SERVICES MUST BE OBTAINED FROM THE INDIVIDUAL UTILITIES BEFORE PROCEEDING WITH CONSTRUCTION.

B.M.	81RG02	SW c/r Jefferson Ave & 1st public lane W of Parr St adjoining CPR ROW. Tbt on pipe, 2.13m N of S.L. Jefferson Ave & 1.0m E of W.L. of public lane	
ELEV.	231.562		
DESIGNED BY	BC/SS	CHECKED BY	KWR
DRAWN BY	PB/RT	APPROVED BY	
HOR. SCALE:	1:250	RELEASED FOR CONSTRUCTION BY:	
VERTICAL:	1:10	DATE:	March 10/14
NO.	REVISIONS	DATE	BY
0	ISSUED FOR TENDER	03/11/2014	BC
A	ISSUED FOR REVIEW	02/28/2014	BC

AECOM

DESIGNED BY: BC/SS
CHECKED BY: KWR
DRAWN BY: PB/RT
APPROVED BY: [Signature]
HOR. SCALE: 1:250
VERTICAL: 1:10
RELEASED FOR CONSTRUCTION BY: [Signature]
DATE: March 10/14



THE CITY OF WINNIPEG
PUBLIC WORKS DEPARTMENT
ENGINEERING DIVISION

2014 LOCAL STREET RENEWAL PROGRAM

JEFFERSON - MCKENZIE STREET TO MCGREGOR STREET
REHABILITATION
MCKENZIE STREET TO STATION 2+20

CITY DRAWING NUMBER: SHEET 06 OF 20

CONSULTANT DRAWING NO. CT-06