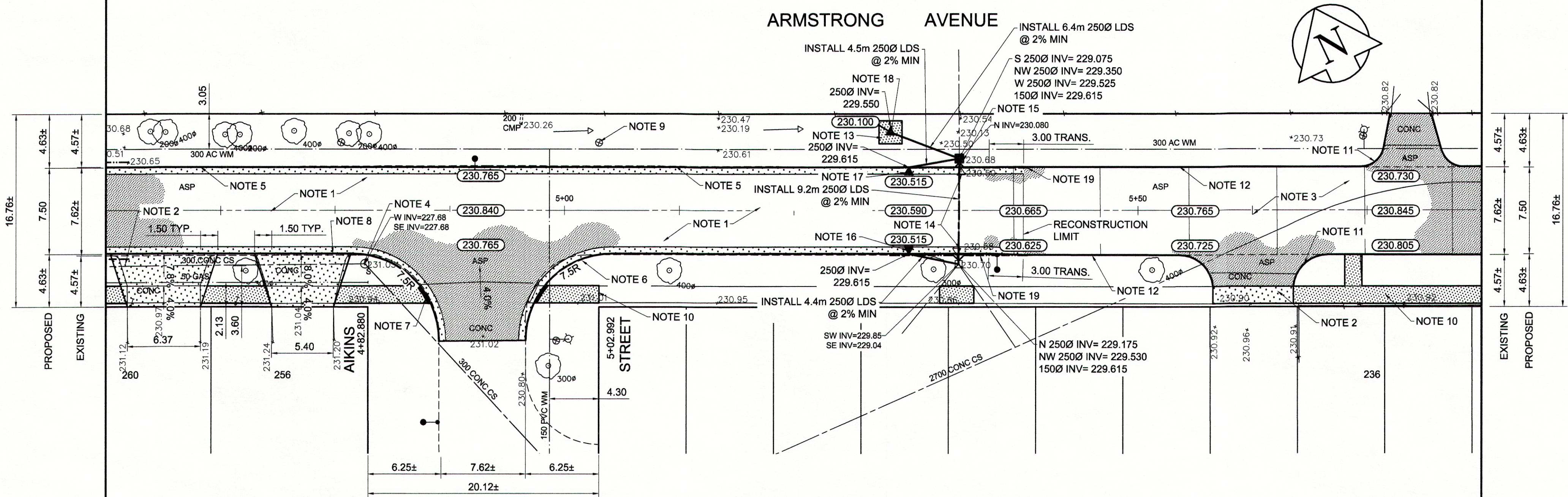


**REFERENCE NOTES**

- A. PAVEMENT DIMENSIONS ARE TO BACK OF CURB
- B. BASELINE IS CENTRE LINE RIGHT-OF-WAY
- C. PROPERTY LINES OBTAINED FROM CITY OF WINNIPEG L.B.I.S., AND NO SCALE FACTOR WAS APPLIED
- D. REFER TO AECOM FIELD BOOK NO. 4804

**CONSTRUCTION NOTES**

1. REMOVE EXISTING CONCRETE PAVEMENT AND CONSTRUCT NEW ASPHALTIC PAVEMENT TYPE1A (100mm)
2. REMOVE EXISTING CONCRETE PAVEMENT AND CONSTRUCT NEW 150mm REINFORCED CONCRETE PAVEMENT
3. REMOVE EXISTING ASPHALTIC PAVEMENT AND PLACE NEW ASPHALTIC PAVEMENT TYPE1A (AVG THICKNESS 85mm)
4. ADJUST EXISTING MANHOLE/CATCH BASIN TO GRADE
5. CONSTRUCT NEW BARRIER CURB AND GUTTER (180mm HT.)
6. CONSTRUCT NEW MODIFIED BARRIER CURB AND GUTTER (180mm HT.)
7. CONSTRUCT NEW CURB RAMP AND GUTTER (10mm HT. INTEGRAL)
8. CONSTRUCT NEW LIP CURB AND GUTTER (40mm HT. INTEGRAL)
9. ADJUST EXISTING WATER VALVE TO GRADE
10. RENEW EXISTING 100mm CONCRETE SIDEWALK
11. RENEW EXISTING MODIFIED BARRIER (150mm HT. INTEGRAL)
12. RENEW EXISTING BARRIER CURB (100mm REVEAL HT. DOWRLED)
13. CONSTRUCT NEW RIP RAP
14. REMOVE EXISTING CATCHPIT AND ABANDON LEAD
15. REMOVE EXISTING CATCHBASIN AND INSTALL NEW CATCHBASIN (SD-025) AND CONNECT TO EXISTING CATCHBASIN
16. INSTALL NEW CURB AND GUTTER INLET c/w CATCHPIT (SD-023) AND CONNECT TO EXISTING CATCHBASIN
17. INSTALL NEW CURB AND GUTTER INLET c/w CATCHPIT (SD-023) AND CONNECT TO NEW CATCHBASIN
18. INSTALL NEW CATCHPIT (SD-025) AND CONNECT TO NEW CATCHBASIN
19. INSTALL 150mm SUBDRAIN



EXISTING	LEGEND - PLAN	PROPOSED	EXISTING	LEGEND - PLAN	PROPOSED	EXISTING	LEGEND - PROFILE	PROPOSED
150 mm W.M.	WATERMAIN	150 mm W.M.	---	HYDRO	---	---	⊙ PROFILE	---
⊙	HYDRANT	⊙	---	M.T.S.	---	---	⊙ NORTH/WEST GUTTER	---
⊙	VALVE	⊙	---	CONCRETE	---	---	⊙ SOUTH/EAST GUTTER	---
300mm L.D.S.	LAND DRAINAGE SEWER	300mm L.D.S.	---	ASPHALT	---	---	⊙ N/W PROPERTY LINE	---
250mm W.W.S.	WASTEWATER SEWER	250mm W.W.S.	---	PROPERTY LINE	---	---	⊙ S/E PROPERTY LINE	---
○	MANHOLE	○	---	SURVEY BAR	---	---	---	---
□	CATCH BASIN	□	---	ELEVATION	35.750	---	---	---
▽	CATCH PIT	▽	---	TREE	---	---	---	---
+	JUNCTIONS	+	---	SIDEWALK RAMP	---	---	---	---
---	CULVERT	---	---	CONCRETE SIDEWALK	---	---	---	---
---	GAS	---	---	FENCE	---	---	---	---

**LOCATION APPROVED UNDERGROUND STRUCTURES**

SUPV. U/G STRUCTURES COMMITTEE DATE

**NOTE:**  
LOCATION OF UNDERGROUND STRUCTURES AS SHOWN ARE BASED ON THE BEST INFORMATION AVAILABLE. BUT NO GUARANTEE IS GIVEN THAT ALL EXISTING UTILITIES ARE SHOWN OR THAT THE GIVEN LOCATIONS ARE EXACT. CONFIRMATION OF EXISTENCE AND EXACT LOCATION OF ALL SERVICES MUST BE OBTAINED FROM THE INDIVIDUAL UTILITIES BEFORE PROCEEDING WITH CONSTRUCTION.

NO.	REVISIONS	DATE	BY
0	ISSUED FOR TENDER	03/11/2014	BC
A	ISSUED FOR REVIEW	02/28/2014	BC

**AECOM**

DESIGNED BY: BC/SS CHECKED BY: KWR  
 DRAWN BY: PB/RT APPROVED BY: [Signature]  
 HOR. SCALE: 1:250  
 VERTICAL: 1:10  
 RELEASED FOR CONSTRUCTION BY: [Signature]  
 DATE: March 14/14

ENGINEER'S SEAL  
 PROVINCE OF MANITOBA  
 K.W. RAE  
 REGISTERED PROFESSIONAL ENGINEER  
 CONSULTANT DRAWING NO. CT-11

**THE CITY OF WINNIPEG**  
 PUBLIC WORKS DEPARTMENT  
 ENGINEERING DIVISION

2014 LOCAL STREET RENEWAL PROGRAM

ARMSTRONG AVENUE - SALTER STREET TO MAIN STREET ASPHALT PAVEMENT RECONSTRUCTION/REHABILITATION STATION 4+60 TO STATION 5+80

CITY DRAWING NUMBER SHEET 11 OF 20



**METRIC**  
 WHOLE NUMBERS INDICATE MILLIMETRES  
 DECIMALIZED NUMBERS INDICATE METRES