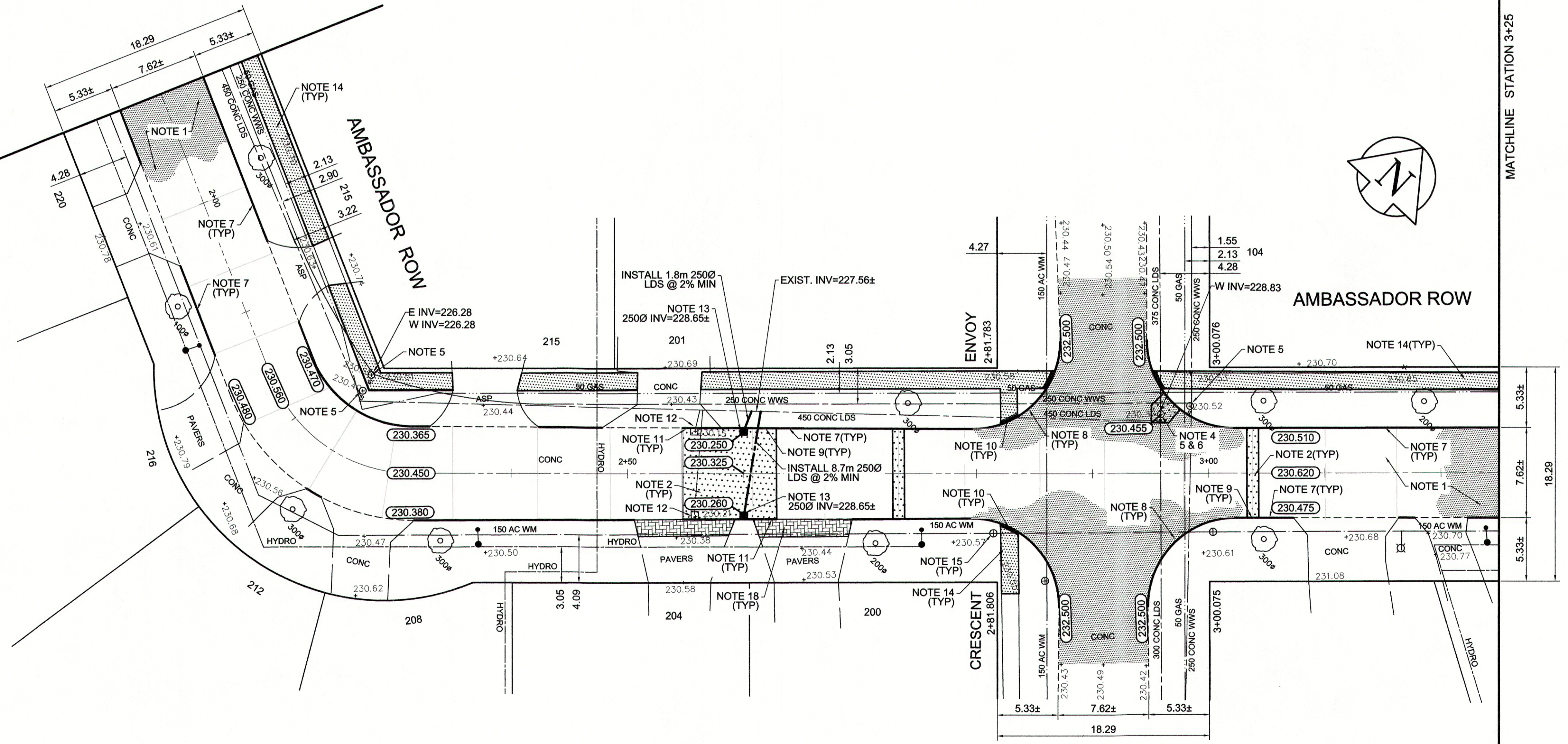


MATCHLINE STATION 1+90

MATCHLINE STATION 3+25



- REFERENCE NOTES**
- A. PAVEMENT DIMENSIONS ARE TO BACK OF CURB
  - B. BASELINE IS CENTRE LINE RIGHT-OF-WAY
  - C. PROPERTY LINES OBTAINED FROM CITY OF WINNIPEG L.B.I.S., AND NO SCALE FACTOR WAS APPLIED
  - D. REFER TO AECOM FIELD BOOK NO. 4803

- CONSTRUCTION NOTES**
1. PLACE NEW ASPHALTIC PAVEMENT TYPE 1A (AVG THICKNESS 85mm)
  2. REMOVE EXISTING CONCRETE PAVEMENT AND CONSTRUCT NEW 150mm REINFORCED CONCRETE PAVEMENT c/w 85mm ASPHALT OVERLAY
  3. REMOVE EXISTING CONCRETE PAVEMENT AND CONSTRUCT NEW 150mm REINFORCED CONCRETE PAVEMENT
  4. REMOVE EXISTING FRAME AND COVER AND INSTALL NEW FRAME AND COVER (AP-005 AND AP-004)
  5. ADJUST EXISTING MANHOLE/CATCH BASIN TO GRADE
  6. INSTALL NEW CAST IRON RISER RING
  7. REMOVE EXISTING MOUNTABLE CURB AND CONSTRUCT NEW BARRIER CURB (100mm HT. DOWELLED)
  8. REMOVE EXISTING CURB AND CONSTRUCT NEW MODIFIED BARRIER CURB (150mm HT. DOWELLED)
  9. CONSTRUCT NEW BARRIER CURB (100mm HT. SEPARATE)
  10. CONSTRUCT NEW CURB RAMP (10mm HT. INTEGRAL)
  11. CONSTRUCT NEW BARRIER CURB (10mm REVEAL HT. DOWELLED)
  12. REMOVE EXISTING CATCHBASIN AND ABANDON LEAD
  13. INSTALL NEW CURB AND GUTTER INLET c/w CATCHBASIN (SD-024) AND CONNECT NEW LEAD TO EXISTING 450 CONCRETE LDS
  14. RENEW EXISTING 100mm CONCRETE SIDEWALK
  15. ADJUST EXISTING WATER VALVE TO GRADE
  16. ADJUST EXISTING CURB STOP TO GRADE
  17. REMOVE EXISTING ASPHALTIC PAVEMENT
  18. REMOVE AND REINSTALL EXISTING PAVERS



**METRIC**  
WHOLE NUMBERS INDICATE MILLIMETRES  
DECIMALIZED NUMBERS INDICATE METRES

150 mm W.M.		150 mm W.M.		HYDRO		C PROFILE	
	WATERMAIN HYDRANT		VALVE		CONCRETE		NORTH/WEST GUTTER
	LAND DRAINAGE SEWER		CATCH BASIN		ASPHALT		SOUTH/EAST GUTTER
	WASTEWATER SEWER		MANHOLE		PROPERTY LINE		N/W PROPERTY LINE
	CATCH PIT		SURVEY BAR		ELEVATION (35.750)		S/E PROPERTY LINE
	JUNCTION		TREE		SIDEWALK RAMP		
	CULVERT		CONCRETE SIDEWALK		FENCE		
	GAS						
	EXISTING LEGEND - PLAN		PROPOSED LEGEND - PLAN		EXISTING LEGEND - PROFILE		PROPOSED LEGEND - PROFILE

**LOCATION APPROVED UNDERGROUND STRUCTURES**

SUPV. U/G STRUCTURES COMMITTEE DATE

**NOTE:**  
LOCATION OF UNDERGROUND STRUCTURES AS SHOWN ARE BASED ON THE BEST INFORMATION AVAILABLE. BUT NO GUARANTEE IS GIVEN THAT ALL EXISTING UTILITIES ARE SHOWN OR THAT THE GIVEN LOCATIONS ARE EXACT. CONFIRMATION OF EXISTENCE AND EXACT LOCATION OF ALL SERVICES MUST BE OBTAINED FROM THE INDIVIDUAL UTILITIES BEFORE PROCEEDING WITH CONSTRUCTION.

B.M. ELEV.	81R913	S W corner Leila Ave & Diplomat Dr.
231.109		7.61 0.02m S of S.L. Leila Ave & 5.1m E of W.L. Diplomat Dr.

**AECOM**

DESIGNED BY: BC/SS  
CHECKED BY: KWR

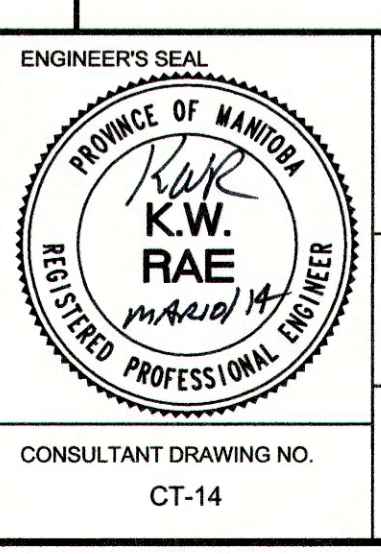
DRAWN BY: PB/RT  
APPROVED BY:

HOR. SCALE: 1:250  
VERTICAL: 1:10

ISSUED FOR TENDER: 03/11/2014 BC  
ISSUED FOR REVIEW: 02/28/2014 BC

RELEASED FOR CONSTRUCTION BY: [Signature]  
DATE: March 10/14

DATE: FEBRUARY 2014



**THE CITY OF WINNIPEG**  
PUBLIC WORKS DEPARTMENT  
ENGINEERING DIVISION

2014 LOCAL STREET  
RENEWAL PROGRAM

AMBASSADOR ROW - SINCLAIR STREET TO LEILA AVENUE  
REHABILITATION  
STATION 1+90 TO STATION 3+25

CITY DRAWING NUMBER: SHEET 14 OF 20

CONSULTANT DRAWING NO. CT-14