

A1 SIZE 894mm x 841mm

238.400
238.000
237.600
237.200
236.800

238.400
238.000
237.600
237.200
236.800

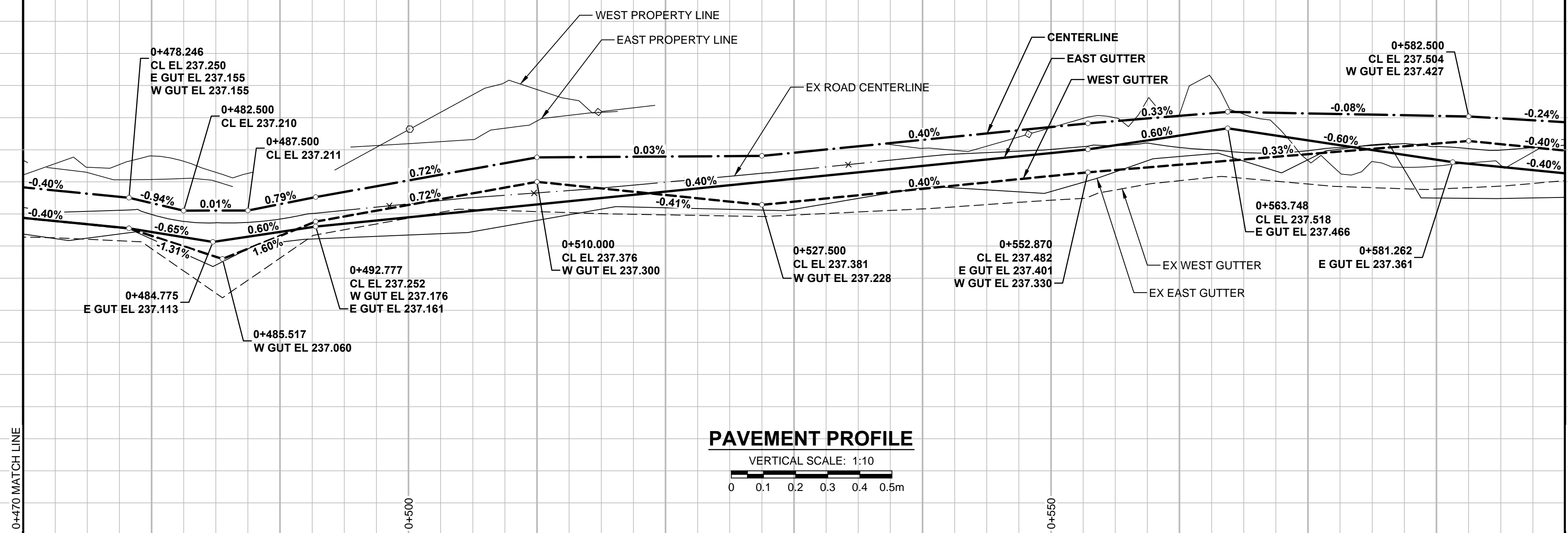
CHAINAGE ALONG PAVEMENT

0+470 MATCH LINE

0+500

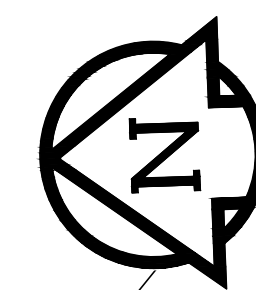
0+550

0+590 MATCH LINE

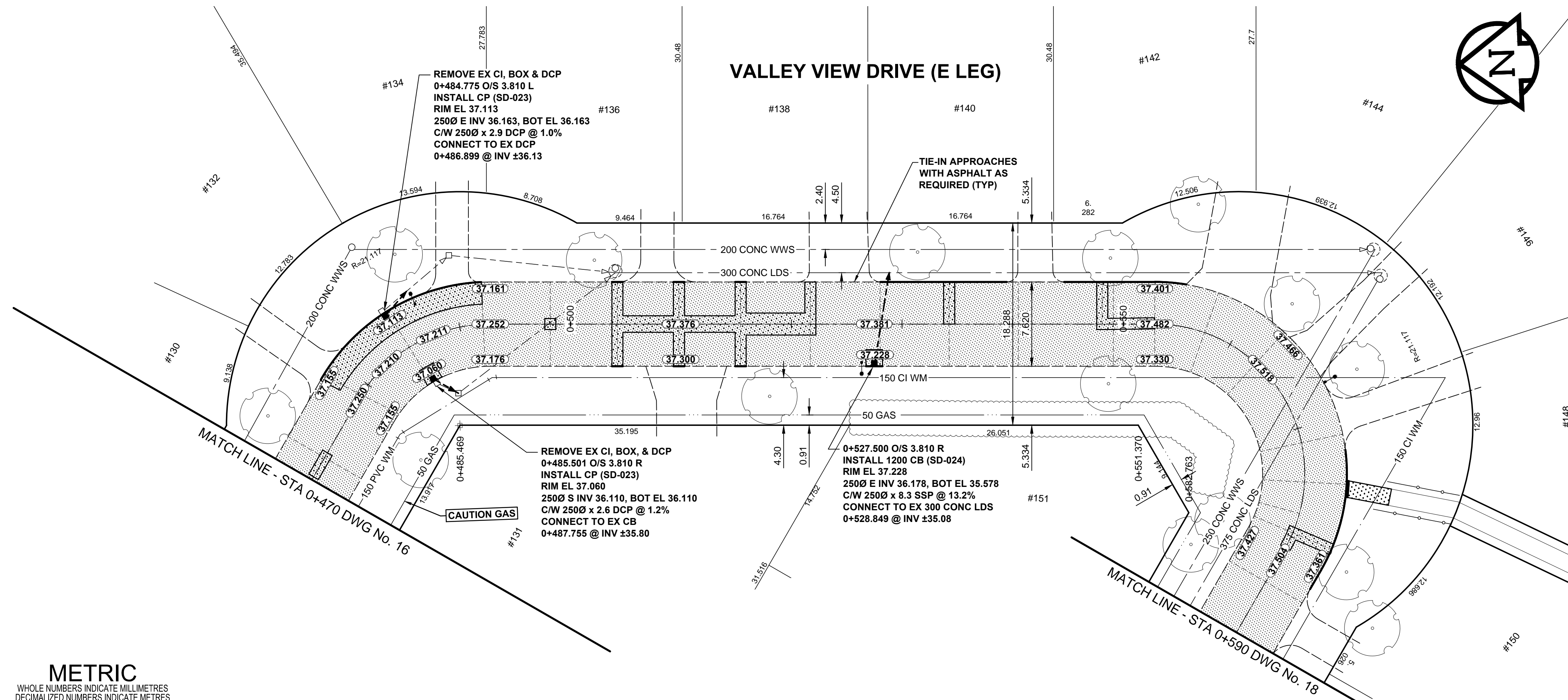


PLOT: 5/14/2014 5:44:39 PM

VALLEY VIEW DRIVE (E LEG)



| CENTERLINE-GEOMETRIC CONTROL POINT COORDINATES | | |
|--|----------|-----------|
| POINT/STATION | NORTHING | EASTING |
| PC 0+478.246 | 9966.270 | 10071.190 |
| PT 0+492.777 | 9954.014 | 10077.696 |
| PC 0+552.870 | 9893.960 | 10075.543 |
| PT 0+581.262 | 9882.948 | 10054.803 |



- NOTES**
- ADJUST MH AND CB RIMS TO NEW GRADES.
 - LAMP STANDARDS, HYDRO POLES, AND ANCHORS THAT REQUIRE TEMPORARY SUPPORT, REMOVAL, OR REPLACEMENT, TO BE DONE SO AT THE EXPENSE OF THE CONTRACTOR AS NECESSARY.
 - CONTRACTOR TO REGRADE/RENEW EXISTING PRIVATE SIDEWALKS TO LIMITS AS SHOWN. SIDEWALKS TO BE RENEWED WITH CONCRETE UNLESS NOTED OTHERWISE.
 - CONTRACTOR TO TAKE PRECAUTIONARY STEPS TO PROTECT EXISTING TREES WITHIN THE LIMITS OF CONSTRUCTION FROM DAMAGE FROM CONSTRUCTION ACTIVITIES AS OUTLINED IN THE SPECIFICATIONS.
 - MODIFIED BARRIER CURB TO BE USED AT ALL INTERSECTION RADII, BACK LANE RADII AND BULLNOSES.
 - CONTRACTOR TO CONFIRM THE LOCATION OF ALL UTILITIES/SERVICES IN THE FIELD PRIOR TO CONSTRUCTION.
 - CONTRACTOR TO OVERLAY DRIVEWAYS TO ENSURE POSITIVE DRAINAGE TO NEW STREET GRADES. FINAL LIMITS TO BE DETERMINED IN THE FIELD BY CONTRACT ADMINISTRATOR.
 - ADD 200.000m TO ABBREVIATED ELEVATIONS TO OBTAIN GEODETIC ELEVATIONS.
 - CB OFFSETS ARE DIMENSIONED TO BOC.
 - SCALE FACTOR OF 1.000211285 APPLIED TO LBIS.



BID OPPORTUNITY No. 209-2014

METRIC
WHOLE NUMBERS INDICATE MILLIMETRES
DECIMALIZED NUMBERS INDICATE METRES

| EXISTING | LEGEND - PLAN | NEW | EXISTING | LEGEND - PLAN | NEW | EXISTING | LEGEND - PLAN | NEW | |
|----------|--------------------------|-----|-------------------------|---------------|----------------------------|----------|--------------------------------------|-----|--|
| | GAS | | MANHOLE | | CONCRETE PAVEMENT | | LOCATION APPROVED | | GBM 40-014 |
| | MTS | | CATCH BASIN / CATCH PIT | | CONC SIDEWALK / MEDIAN | | UNDERGROUND STRUCTURES | | ELEV 237.305 |
| | HYDRO | | CURB INLET WITH BOX | | ASPHALT PAVEMENT | | SUPR. U/G STRUCTURES | | DATE |
| | CATV / FIBRE OPTIC | | TREE | | PAVING STONE | | COMMITTEE | | NOTE: |
| | TRAFFIC SIGNALS / PIT | | TEST HOLE | | GRAVEL | | LOCATION OF UNDERGROUND STRUCTURES | | INFORMATION AVAILABLE. BUT NO |
| | LAND DRAINAGE SEWER | | PROPERTY LINE | | RAMP CURB | | GUARANTEE IS GIVEN THAT ALL EXISTING | | EXISTENCE AND EXACT LOCATION OF ALL |
| | SANITARY/COMBINED SEWER | | SURVEY BAR | | PLANING / REMOVAL | | SERVICES MUST BE OBTAINED FROM THE | | INDIVIDUAL UTILITIES BEFORE PROCEEDING |
| | SEWER SERV/DRAINAGE CONN | | FENCE | | EXISTING WITH CONSTRUCTION | | WITH CONSTRUCTION. | | NO REVISIONS |
| | WATERMAIN | | BOC / EDGE OF PAVEMENT | | DATE | | JGK | | DATE |
| | SUBDRAIN | | ELEVATION | | DATE | | BY | | DATE |
| | DITCH | | TRAFFIC SIGN | | DATE | | DATE | | DATE |

MORRISON HERSHFIELD

DESIGNED BY: JGK
CHECKED BY: RPB
DRAWN BY: DID, DML
APPROVED BY: BWB
HOR. SCALE: 1:250
VERT. SCALE: 1:10
DATE: 13/10/28

PROFESSIONAL'S SEAL
PROVINCE OF MANITOBA
J.G. KENNEDY
Member
22326
13 MAY 14
REGISTERED PROFESSIONAL ENGINEER

CONSULTANT DRAWING No. W130028-T-017_RX.dwg

THE CITY OF WINNIPEG
PUBLIC WORKS DEPARTMENT
ENGINEERING DIVISION

2014 LOCAL STREETS PACKAGE
VALLEY VIEW DRIVE N LEG
REHABILITATION
HORIZONTAL AND VERTICAL ALIGNMENT
STA 0+470 TO STA 0+590

CITY DRAWING NUMBER: N/A
SHEET 17 OF 34
DRAWING No. 17
REV 0

FILE NAME: W130028-T-017_RX.dwg Saved By: dlane