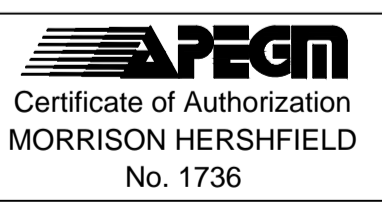


POINT/STATION	NORTHING	EASTING
POT 0+695.000	10049.335	10012.149
POT 0+710.000	10064.322	10012.781

- NOTES**
- ADJUST MH AND CB RIMS TO NEW GRADES.
 - LAMP STANDARDS, HYDRO POLES, AND ANCHORS THAT REQUIRE TEMPORARY SUPPORT, REMOVAL OR REPLACEMENT, TO BE DONE SO AT THE EXPENSE OF THE CONTRACTOR AS NECESSARY.
 - CONTRACTOR TO REGRADE/RENEW EXISTING PRIVATE SIDEWALKS TO LIMITS AS SHOWN. SIDEWALKS TO BE RENEWED WITH CONCRETE UNLESS NOTED OTHERWISE.
 - CONTRACTOR TO TAKE PRECAUTIONARY STEPS TO PROTECT EXISTING TREES WITHIN THE LIMITS OF CONSTRUCTION FROM DAMAGE FROM CONSTRUCTION ACTIVITIES AS OUTLINED IN THE SPECIFICATIONS.
 - MODIFIED BARRIER CURB TO BE USED AT ALL INTERSECTION RADII, BACK LANE RADII AND BULLNOSES.
 - CONTRACTOR TO CONFIRM THE LOCATION OF ALL UTILITIES/SERVICES IN THE FIELD PRIOR TO CONSTRUCTION.
 - CONTRACTOR TO OVERLAY DRIVEWAYS TO ENSURE POSITIVE DRAINAGE TO NEW STREET GRADES. FINAL LIMITS TO BE DETERMINED IN THE FIELD BY CONTRACT ADMINISTRATOR.
 - ADD 200.000m TO ABBREVIATED ELEVATIONS TO OBTAIN GEODETIC ELEVATIONS.
 - CB OFFSETS ARE DIMENSIONED TO BOC.
 - SCALE FACTOR OF 1.000211285 APPLIED TO LBS.



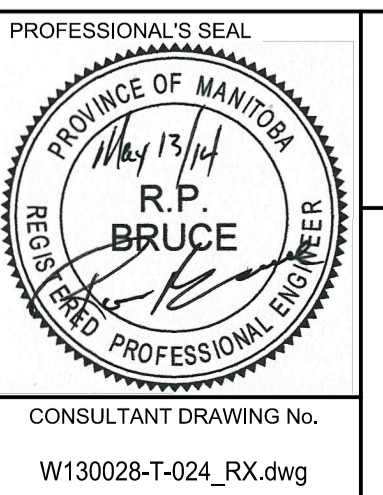
BID OPPORTUNITY No. 209-2014

METRIC
WHOLE NUMBERS INDICATE MILLIMETRES
DECIMALIZED NUMBERS INDICATE METRES

EXISTING	LEGEND - PLAN	NEW	EXISTING	LEGEND - PLAN	NEW	EXISTING	LEGEND - PLAN	NEW	
	GAS		MANHOLE		CONCRETE PAVEMENT		LOCATION APPROVED		GBM 40-028
	MTS		CATCH BASIN / CATCH PIT		CONC SIDEWALK / MEDIAN		UNDERGROUND STRUCTURES		ELEV 240.350
	HYDRO		CURB INLET WITH BOX		ASPHALT PAVEMENT		SUPR. U/G STRUCTURES		
	CATV / FIBRE OPTIC		TREE		PAVING STONE		DATE COMMITTEE		
	TRAFFIC SIGNALS / PIT		TEST HOLE		GRAVEL		NOTE:		
	LAND DRAINAGE SEWER		PROPERTY LINE		RAMP CURB		LOCATION OF UNDERGROUND STRUCTURES AS SHOWN ARE BASED ON THE BEST INFORMATION AVAILABLE. BUT NO GUARANTEE IS GIVEN THAT ALL EXISTING UTILITIES ARE SHOWN OR THAT THE GIVEN LOCATIONS ARE EXACT. CONFIRMATION OF EXISTENCE AND EXACT LOCATION OF ALL SERVICES MUST BE OBTAINED FROM THE INDIVIDUAL UTILITIES BEFORE PROCEEDING WITH CONSTRUCTION.		
	SANITARY/COMBINED SEWER		SURVEY BAR		PLANING / REMOVAL		DATE		
	SEWER SERV/DRAINAGE CONN		FENCE				DATE		
	WATERMAIN		BOC / EDGE OF PAVEMENT				DATE		
	SUBDRAIN		ELEVATION (33.100)				DATE		
	DITCH		TRAFFIC SIGN				DATE		

No.	ISSUED FOR CONSTRUCTION	14/05/14	RPB
0	ISSUED FOR CONSTRUCTION	14/05/14	RPB
	REVISIONS	YYMMDD	BY

DESIGNED BY	RBP	CHECKED BY	WRJ
DRAWN BY	DID, DML	APPROVED BY	BWB
HOR. SCALE	1:250	RELEASED FOR CONSTRUCTION	OSTK
VERT. SCALE	1:10	DATE	05/14/14
DATE	13/10/28		



THE CITY OF WINNIPEG
PUBLIC WORKS DEPARTMENT
ENGINEERING DIVISION

2014 LOCAL STREETS PACKAGE
ISBISTER STREET
PORTAGE AVENUE TO FAIRLANE AVENUE
REHABILITATION
HORIZONTAL AND VERTICAL ALIGNMENT
STA 0+600 TO STA 0+710

CITY DRAWING NUMBER: N/A
SHEET 24 OF 34
DRAWING No. 24
REV 0