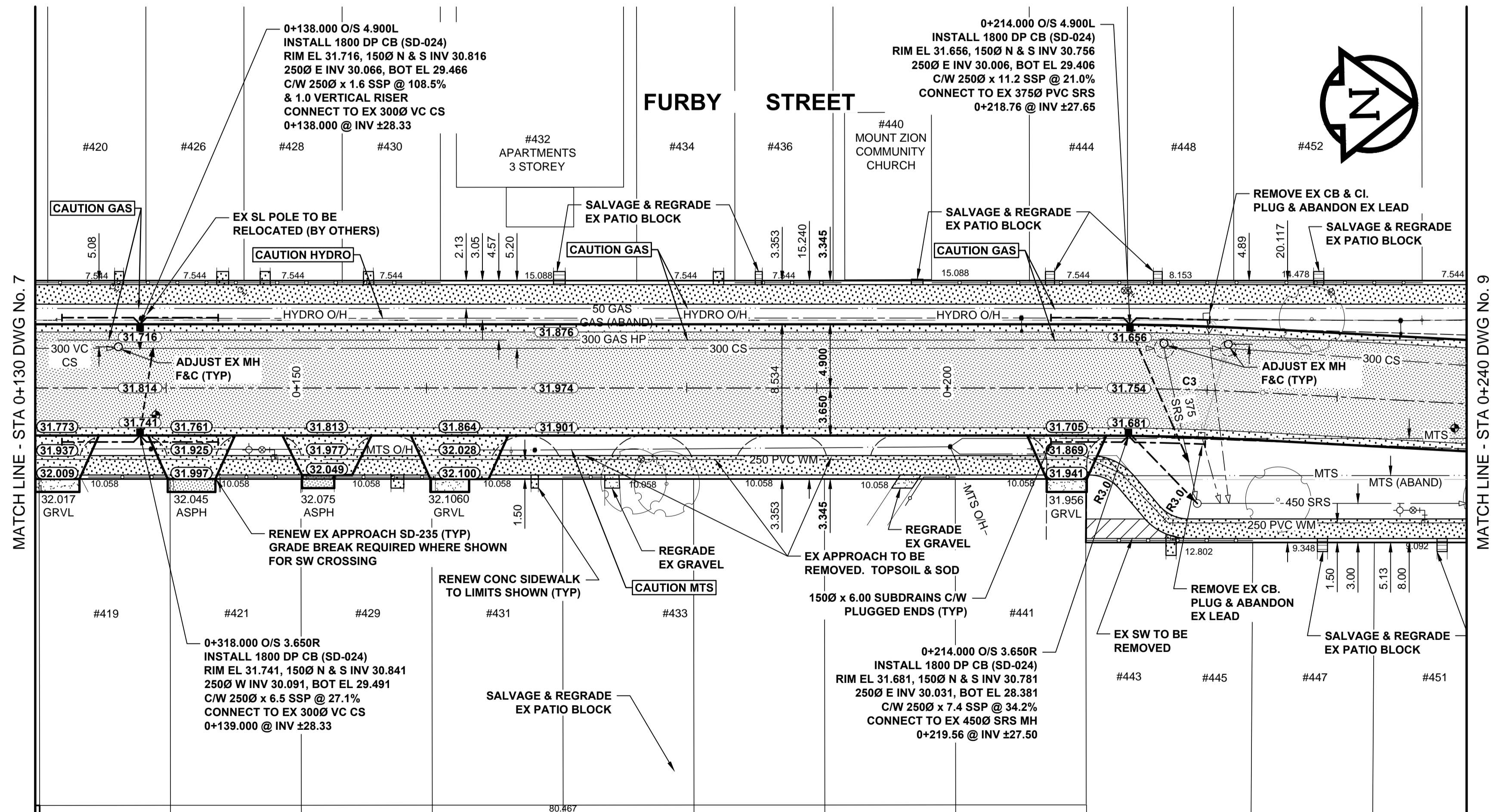


**PAVEMENT SECTION**  
ASPHALT PAVEMENT STRUCTURE  
TYPICAL  
SCALE: N.T.S.

**WORKING IN THE PROXIMITY OF HIGH PRESSURE GAS MAIN**

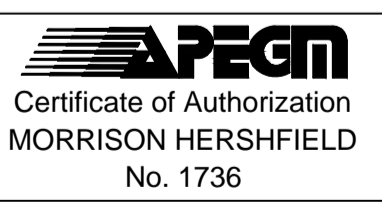
THE PROPOSED ROAD RECONSTRUCTION OF FURBY STREET CROSSES OVER AN EXISTING 323.9mm HIGH PRESSURE NATURAL GAS MAIN. THE FOLLOWING PARAMETERS SHALL BE FOLLOWED WHEN WORKING IN PROXIMITY TO ALL NATURAL GAS MAINS:

- A MANITOBA HYDRO HIGH PRESSURE SAFETY WATCH IS REQUIRED FOR ALL CONSTRUCTION ACTIVITIES WITHIN 3.0m OF THE HIGH PRESSURE NATURAL GAS MAIN.
- PRIOR TO CONSTRUCTION EXPOSE THE MAIN BY HYDRO-EXCAVATION EVERY 25m AND AT CB LOCATIONS IN ORDER TO CONFIRM ELEVATION OF THE PIPE.
- ALL EXCAVATIONS WITHIN 1.0m OF ANY NATURAL GAS MAIN MUST BE COMPLETED BY HAND OR HYDRO-EXCAVATION.
- A MINIMUM 900mm OF COVER SHALL BE MAINTAINED IN ALL AREAS WHERE EQUIPMENT WILL BE CROSSING. TRAVELING OR COMPACTING OVER THE 323.9mm GAS MAIN. VIBRATORY COMPACTION CANNOT BE USED OVER OR WITHIN 3.0m OF A MAIN WHERE THERE WILL BE LESS THAN 1.0m OF COVER.
- A MINIMUM 600mm COVER SHALL BE MAINTAINED IN ALL AREAS WHERE EQUIPMENT WILL BE CROSSING. TRAVELING OR COMPACTING OVER THE 60.3mm GAS MAIN. VIBRATORY COMPACTION CANNOT BE USED OVER OR WITHIN 3.0m OF A MAIN WHERE THERE WILL BE LESS THAN 1.0m OF COVER.
- IF EQUIPMENT MUST CROSS, TRAVEL OR COMPACT OVER THE GAS MAIN WITH LESS THAN THE MINIMUM DEPTH OF COVER, EARTH BRIDGING OR STEEL PLATES SHALL BE PLACED OVER THE MAIN AND EXTEND A MINIMUM OF 1.0m ON EITHER SIDE AT EACH CROSSING LOCATION.
- CAUTION MUST BE USED TO ENSURE THE INTEGRITY OF THE PIPELINE COATING. ANY DAMAGES TO THE COATING MUST BE REPORTED AND REPAIRED BY MANITOBA HYDRO PRIOR TO BACKFILLING.



CIRCULAR CURVE DATA				
CURVE	RADIUS	LENGTH	DELTA	TANGENT
C3	250.000	13.572	3°06'38"	6.788

CENTERLINE-GEOMETRIC CONTROL POINT COORDINATES		
POINT/STATION	NORTHING	EASTING
PT 0+117.996	9817.985	10001.165
PC 0+210.707	9910.673	10003.219
PT 0+224.279	9924.227	10003.887



BID OPPORTUNITY No. 209-2014

**METRIC**  
WHOLE NUMBERS INDICATE MILLIMETRES  
DECIMALIZED NUMBERS INDICATE METRES

EXISTING	LEGEND - PLAN	NEW	EXISTING	LEGEND - PLAN	NEW	EXISTING	LEGEND - PLAN	NEW	
	GAS		MANHOLE		CONCRETE PAVEMENT		LOCATION APPROVED		GAS
	MTS		CATCH BASIN / CATCH PIT		CONC SIDEWALK / MEDIAN		UNDERGROUND STRUCTURES		HYDRO
	HYDRO		CURB INLET WITH BOX		ASPHALT PAVEMENT		DATE		CATV / FIBRE OPTIC
	CATV / FIBRE OPTIC		TREE		PAVING STONE		NOTE:		TRAFFIC SIGNALS / PIT
	TRAFFIC SIGNALS / PIT		TEST HOLE		GRAVEL		LOCATION APPROVED		LAND DRAINAGE SEWER
	LAND DRAINAGE SEWER		PROPERTY LINE		RAMP CURB		LOCATION APPROVED		SANITARY/COMBINED SEWER
	SANITARY/COMBINED SEWER		SURVEY BAR		PLANING / REMOVAL		LOCATION APPROVED		SEWER SERV/DRAINAGE CONN
	SEWER SERV/DRAINAGE CONN		FENCE		EXISTING		LOCATION APPROVED		WATERMAIN
	WATERMAIN		BOC / EDGE OF PAVEMENT		NEW		LOCATION APPROVED		SUBDRAIN
	SUBDRAIN		ELEVATION		EXISTING		LOCATION APPROVED		DITCH
	DITCH		TRAFFIC SIGN		EXISTING		LOCATION APPROVED		EXISTING

DESIGNED BY	RPB	CHECKED BY	WRJ
DRAWN BY	DID, DML	APPROVED BY	BWB
HOR. SCALE	1:250	RELEASED FOR CONSTRUCTION	05/14/14
VERT. SCALE	1:10	DATE	13/10/28
0	ISSUED FOR CONSTRUCTION	14/05/14	RPB
No.	REVISIONS	YYMMDD	BY

**MORRISON HERSHFIELD**

DESIGNED BY: RPB  
DRAWN BY: DID, DML  
HOR. SCALE: 1:250  
VERT. SCALE: 1:10  
DATE: 13/10/28

CHECKED BY: WRJ  
APPROVED BY: BWB  
RELEASED FOR CONSTRUCTION: 05/14/14  
DATE: 13/10/28

PROFESSIONAL'S SEAL

PROVINCE OF MANITOBA  
REGISTERED PROFESSIONAL ENGINEER  
R.P. BRUCE  
CONSULTANT DRAWING No. W130028-T-008\_RX.dwg

**THE CITY OF WINNIPEG**  
PUBLIC WORKS DEPARTMENT  
ENGINEERING DIVISION

2014 LOCAL STREETS PACKAGE  
**FURBY STREET**  
FURBY PLACE TO ELLICE AVENUE  
ASPHALT RECONSTRUCTION  
HORIZONTAL AND VERTICAL ALIGNMENT  
STA 0+130 TO STA 0+240

CITY DRAWING NUMBER: N/A  
SHEET 8 OF 34  
DRAWING No. 8  
REV 0