

WORKING IN THE PROXIMITY OF HIGH PRESSURE GAS MAIN

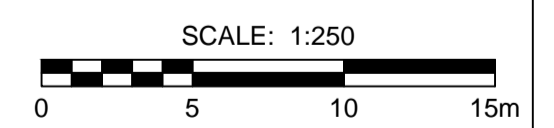
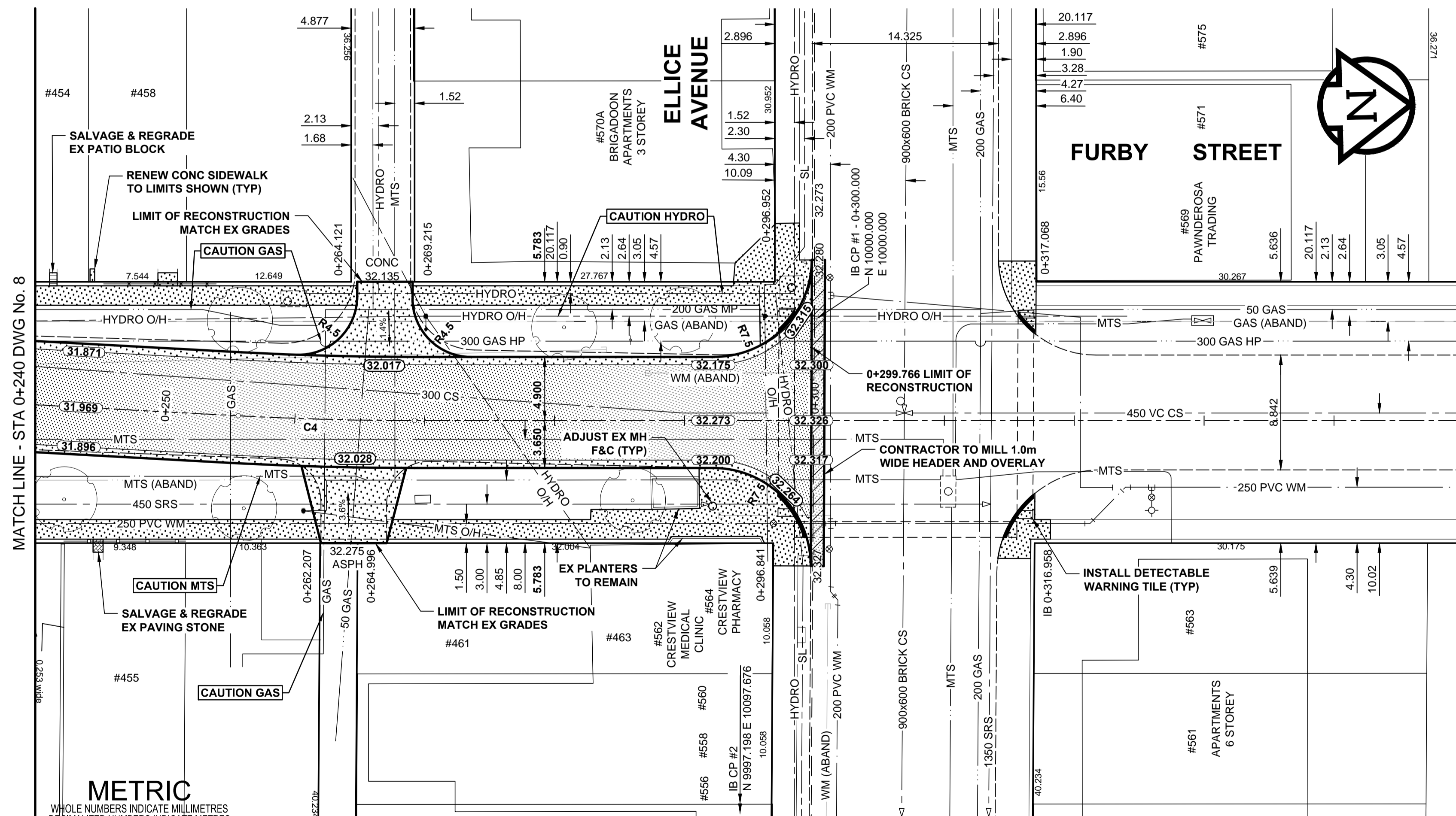
THE PROPOSED ROAD RECONSTRUCTION OF FURBY STREET CROSSES OVER AN EXISTING 323.9mm HIGH PRESSURE NATURAL GAS MAIN. THE FOLLOWING PARAMETERS SHALL BE FOLLOWED WHEN WORKING IN PROXIMITY TO ALL NATURAL GAS MAINS:

- A. A MANITOBA HYDRO HIGH PRESSURE SAFETY WATCH IS REQUIRED FOR ALL CONSTRUCTION ACTIVITIES WITHIN 3.0m OF THE HIGH PRESSURE NATURAL GAS MAIN.
- B. PRIOR TO CONSTRUCTION EXPOSE THE MAIN BY HYDRO-EXCAVATION EVERY 25m AND AT CB LOCATIONS IN ORDER TO CONFIRM ELEVATION OF THE PIPE.
- C. ALL EXCAVATIONS WITHIN 1.0m OF ANY NATURAL GAS MAIN MUST BE COMPLETED BY HAND OR HYDRO-EXCAVATION.
- D. A MINIMUM 900mm OF COVER SHALL BE MAINTAINED IN ALL AREAS WHERE EQUIPMENT WILL BE CROSSING, TRAVELING OR COMPACTING OVER THE 323.9mm GAS MAIN. VIBRATORY COMPACTION CANNOT BE USED OVER OR WITHIN 3.0m OF A MAIN WHERE THERE WILL BE LESS THAN 1.0m OF COVER.
- E. A MINIMUM 600mm COVER SHALL BE MAINTAINED IN ALL AREAS WHERE EQUIPMENT WILL BE CROSSING, TRAVELING OR COMPACTING OVER THE 60.3mm GAS MAIN. VIBRATORY COMPACTION CANNOT BE USED OVER OR WITHIN 3.0m OF A MAIN WHERE THERE WILL BE LESS THAN 1.0m OF COVER.
- F. IF EQUIPMENT MUST CROSS, TRAVEL OR COMPACT OVER THE GAS MAIN WITH LESS THAN THE MINIMUM DEPTH OF COVER, EARTH BRIDGING OR STEEL PLATES SHALL BE PLACED OVER THE MAIN AND EXTEND A MINIMUM OF 1.0m ON EITHER SIDE AT EACH CROSSING LOCATION.
- G. CAUTION MUST BE USED TO ENSURE THE INTEGRITY OF THE PIPELINE COATING. ANY DAMAGES TO THE COATING MUST BE REPORTED AND REPAIRED BY MANITOBA HYDRO PRIOR TO BACKFILLING.

- NOTES**
1. ADJUST MH AND CB RIMS TO NEW GRADES.
 2. LAMP STANDARDS, HYDRO POLES, AND ANCHORS THAT REQUIRE TEMPORARY SUPPORT, REMOVAL, OR REPLACEMENT, TO BE DONE SO AT THE EXPENSE OF THE CONTRACTOR AS NECESSARY.
 3. CONTRACTOR TO REGRADE/RENEW EXISTING PRIVATE SIDEWALKS TO LIMITS AS SHOWN. SIDEWALKS TO BE RENEWED WITH CONCRETE UNLESS NOTED OTHERWISE.
 4. CONTRACTOR TO TAKE PRECAUTIONARY STEPS TO PROTECT EXISTING TREES WITHIN THE LIMITS OF CONSTRUCTION FROM DAMAGE FROM CONSTRUCTION ACTIVITIES AS OUTLINED IN THE SPECIFICATIONS.
 5. MODIFIED BARRIER CURB TO BE USED AT ALL INTERSECTION RADII, BACK LANE RADII AND BULLNOSES.
 6. CONTRACTOR TO CONFIRM THE LOCATION OF ALL UTILITIES/SERVICES IN THE FIELD PRIOR TO CONSTRUCTION.
 7. ADD 200.000mm TO ABBREVIATED ELEVATIONS TO OBTAIN GEODETIC ELEVATIONS.
 8. CB OFFSETS ARE DIMENSIONED TO BOC.
 9. SCALE FACTOR OF 1.000040936 APPLIED TO LBIS.

CIRCULAR CURVE DATA				
CURVE	RADIUS	LENGTH	DELTA	TANGENT
C4	250.000	13.572	3°08'38"	6.788

CENTERLINE-GEOMETRIC CONTROL POINT COORDINATES		
POINT/STATION	NORTHING	EASTING
PC 0+255.643	9955.499	10006.283
PT 0+269.215	9969.053	10006.952
POT 0+300.000	9999.831	10007.634
POT 0+350.000	10049.819	10008.741



BID OPPORTUNITY No. 209-2014

EXISTING	LEGEND - PLAN	NEW	EXISTING	LEGEND - PLAN	NEW	EXISTING	LEGEND - PLAN	NEW	
	GAS		MANHOLE		CONCRETE PAVEMENT		LOCATION APPROVED		GAS
	MTS		CATCH BASIN / CATCH PIT		CONC SIDEWALK / MEDIAN		UG STRUCTURES		MTS
	HYDRO		CURB INLET WITH BOX		ASPHALT PAVEMENT		DATE COMMITTEE		HYDRO
	CATV / FIBRE OPTIC		TREE		PAVING STONE		NOTE:		CATV / FIBRE OPTIC
	TRAFFIC SIGNALS / PIT		TEST HOLE		GRAVEL		LOCATION APPROVED		TRAFFIC SIGNALS / PIT
	LAND DRAINAGE SEWER		PROPERTY LINE		RAMP CURB		LOCATION APPROVED		LAND DRAINAGE SEWER
	SANITARY/COMBINED SEWER		SURVEY BAR		PLANING / REMOVAL		LOCATION APPROVED		SANITARY/COMBINED SEWER
	SEWER SERV/DRAINAGE CONN		FENCE				LOCATION APPROVED		SEWER SERV/DRAINAGE CONN
	WATERMAIN		BOC / EDGE OF PAVEMENT				LOCATION APPROVED		WATERMAIN
	SUBDRAIN		ELEVATION				LOCATION APPROVED		SUBDRAIN
	DITCH		TRAFFIC SIGN				LOCATION APPROVED		DITCH

EXISTING	LEGEND - PLAN	NEW	EXISTING	LEGEND - PLAN	NEW
	GAS		MANHOLE		CONCRETE PAVEMENT
	MTS		CATCH BASIN / CATCH PIT		CONC SIDEWALK / MEDIAN
	HYDRO		CURB INLET WITH BOX		ASPHALT PAVEMENT
	CATV / FIBRE OPTIC		TREE		PAVING STONE
	TRAFFIC SIGNALS / PIT		TEST HOLE		GRAVEL
	LAND DRAINAGE SEWER		PROPERTY LINE		RAMP CURB
	SANITARY/COMBINED SEWER		SURVEY BAR		PLANING / REMOVAL
	SEWER SERV/DRAINAGE CONN		FENCE		
	WATERMAIN		BOC / EDGE OF PAVEMENT		
	SUBDRAIN		ELEVATION		
	DITCH		TRAFFIC SIGN		

ISSUED FOR CONSTRUCTION	DATE	BY
0	14/05/14	RPB
No. REVISIONS	YYMMDD	BY

DESIGNED BY	CHECKED BY
RPB	WRJ
DRAWN BY	APPROVED BY
DID, DML	BWB
HOR. SCALE	RELEASED FOR CONSTRUCTION
1:250	05/14/14
VERT. SCALE	DATE
1:10	13/10/28

PROFESSIONAL'S SEAL
PROVINCE OF MANITOBA
REGISTERED PROFESSIONAL ENGINEER
MAY 13 2014
R.P. BRUCE

THE CITY OF WINNIPEG
PUBLIC WORKS DEPARTMENT
ENGINEERING DIVISION

2014 LOCAL STREETS PACKAGE
FURBY STREET
FURBY PLACE TO ELLICE AVENUE
ASPHALT RECONSTRUCTION
HORIZONTAL AND VERTICAL ALIGNMENT
STA 0+240 TO STA 0+350

CITY DRAWING NUMBER: N/A
SHEET 9 OF 34
DRAWING No. 9
REV 0