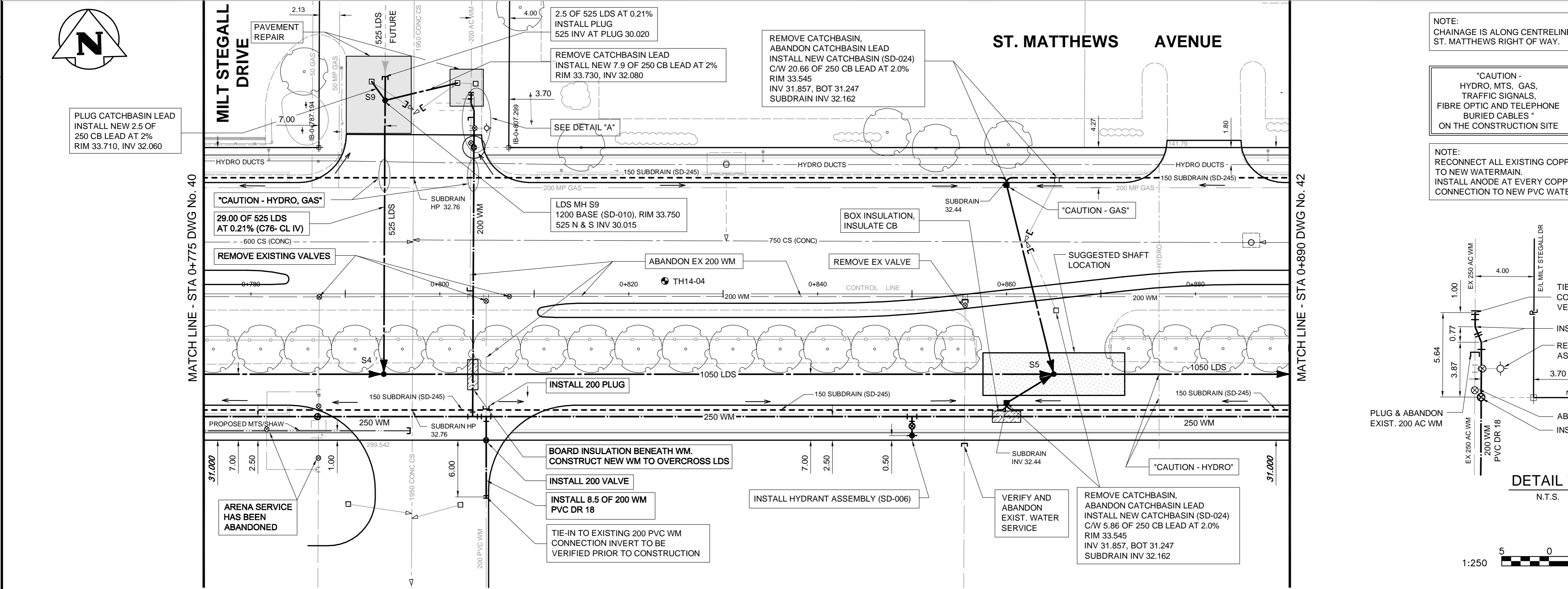


- NOTES**
- ALL MATERIALS AND CONSTRUCTION METHODS TO COMPLY WITH LATEST EDITION OF CITY OF WINNIPEG STANDARD CONSTRUCTION SPECIFICATION.
 - LOCATION OF ALL SEWER AND WATER MAINS AND SERVICES TO BE CONFIRMED IN FIELD PRIOR TO CONSTRUCTION. SEWER AND WATER SERVICES SHOWN ON DRAWINGS ARE APPROXIMATE ONLY. NOTIFY CONTRACT ADMINISTRATOR OF ANY DISCREPANCIES.
 - CONFIRM THAT SERVICES ARE ACTIVE BEFORE CONNECTING. ABANDON SERVICES NO LONGER IN USE WHERE DIRECTED BY THE CONTRACT ADMINISTRATOR.
 - CONDITION OF EXISTING SERVICES TO BE VERIFIED BY CONTRACT ADMINISTRATOR. NEVER OR GOOD CONDITION SERVICES TO REMAIN AND OLDER OR POOR CONDITION SERVICES TO BE RENEWED TO PROPERTY LINE.
 - CONFIRM DEPTH OF SEWER SERVICES AT PROPERTY LINE USING SOFT DIG OR PIPE TRACING METHODS BEFORE ORDERING MAINLINE SEWER MAINHOLES. CONTRACT ADMINISTRATOR MAY ADJUST MAINLINE SEWER DEPTH IF NECESSARY.
 - ALL SEWERS AND CATCHBASIN LEADS BENEATH PROPOSED PAVEMENT TO BE ABANDONED WITH FLOWABLE FILL TO SD-021.
 - INSTALL NEW SEWERS AND CATCHBASIN LEADS BY TRENCHLESS METHODS, UNLESS OTHERWISE NOTED.
 - CATCHBASIN OFFSETS ARE DIMENSIONED TO BACK OF CURB.
 - CATCHBASIN LEAD RISERS TO BE TYPE 'B' (SD-015).
 - ALL MANHOLES AND CATCHBASINS WITHIN SLIP-FORM PAVING AREAS TO INCLUDE 100mm RISER BELOW FRAME AND COVER. CATCHBASIN RISERS FOR SD-024 INSTALLATIONS WITH AP-008 FRAMES TO BE 2 x 50mm MODULOG TYPE PRECAST SQUARE RISERS.
 - ALL DEEP SHAFTS ON ST JAMES STREET, ST MATTHEWS AVENUE, AND ELLICE AVENUE TO HAVE CLASS 1 BACKFILL. SHALLOW EXCAVATIONS UNDER AND WITHIN 1.0m OF PAVEMENT OR SIDEWALK TO USE CLASS 3 BACKFILL. CLASS 5 BACKFILL TO BE USED UNDER BOULEVARD AREAS. WATERMAIN TO HAVE 2.5m COVER FROM CENTRELINE OF ROAD. 100mm BOX INSULATION TO BE PROVIDED WHERE WATERMANS AND SERVICES ARE SHALLOWER THAN 2.5m.
 - PUSH-ON WATERMAIN FITTINGS TO BE RESTRAINED AGAINST THRUST USING CONCRETE THRUST BLOCKS TO CITY OF WINNIPEG SD-004 AND SD-005. ADDITIONAL THRUST RESTRAINT USING JOINT HARNESSES WITH STAINLESS STEEL TIE RODS AND NUTS TO BE PROVIDED AS DIRECTED BY THE CONTRACT ADMINISTRATOR.
 - INSTALL WATERMAIN BY TRENCHLESS METHODS UNDER ALL PAVEMENTS, TREES AND OTHER APPURTENANCES.
 - ALL VALVES SHALL TURN COUNTER-CLOCKWISE TO CLOSE (RED OPERATING NUT).
 - INSTALL ALL HYDRANTS WITH FLANGE ELEVATION FROM 100mm TO 150mm ABOVE FINISHED GRADE.
 - SALVAGE ALL EXISTING HYDRANT ASSEMBLIES, VALVES AND VALVE BOXES AND RETURN TO CITY OF WINNIPEG PLINQUET YARD. REUSE EXISTING HYDRANTS ONLY AS DIRECTED.
 - CONTRACTOR TO NOTIFY BUSINESSES AND RESIDENTS A MINIMUM OF 48 HOURS PRIOR TO ANY DISRUPTION TO WATER SERVICE.
 - ADD 200.00m TO ABBREVIATED ELEVATIONS TO OBTAIN GEODETIC ELEVATIONS.

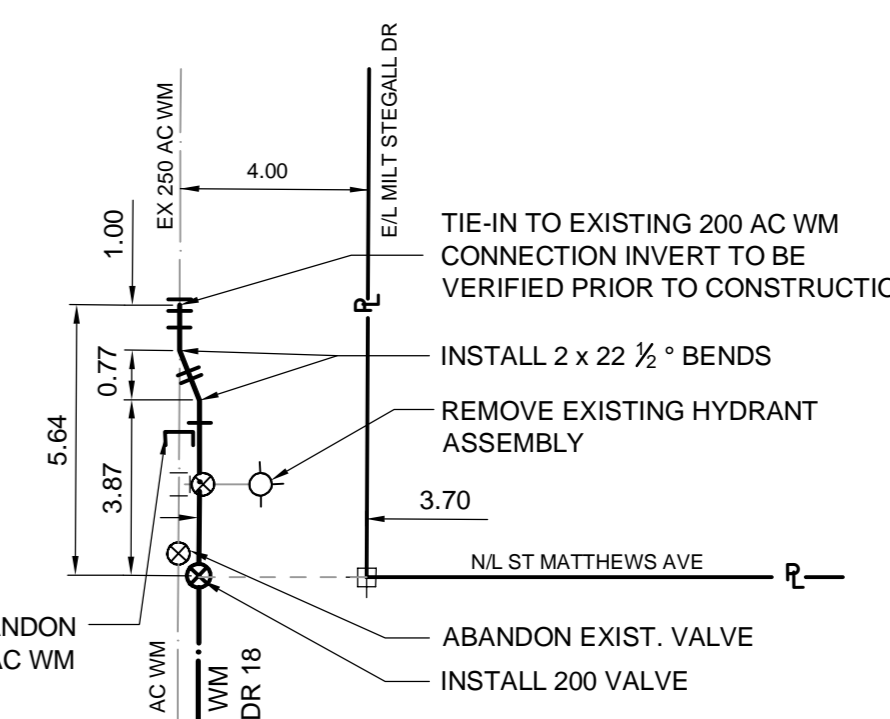


NOTE: CHAINAGE IS ALONG CENTRELINE OF ST. MATTHEWS RIGHT OF WAY.

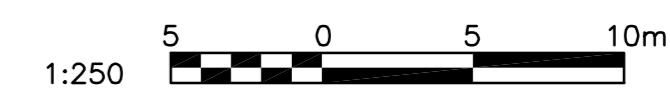
CAUTION - HYDRO, MTS, GAS, TRAFFIC SIGNALS, FIBRE OPTIC AND TELEPHONE BURIED CABLES * ON THE CONSTRUCTION SITE

NOTE: OFF-LINE WM RENEWAL. ABANDON EXISTING PIPE

NOTE: RECONNECT ALL EXISTING COPPER SERVICES TO NEW WATERMAIN. INSTALL ANODE AT EVERY COPPER WATER SERVICE CONNECTION TO NEW PVC WATERMAIN.



DETAIL "A"
N.T.S.



APEGM
Certificate of Authorization
TETRA TECH WEI Inc.
No. 5313 Date: April 30, 2014

EXISTING	LEGEND-PLAN	PROPOSED	EXISTING	LEGEND-PLAN	PROPOSED	EXISTING	LEGEND-PLAN	PROPOSED
150 WM	WATERMAIN	---	BEND	---	---	ANCHOR	---	---
400 FM	FEEDERMAIN	---	TEE	---	---	HYDRO BOX	---	---
300 LDS	LAND DRAINAGE SEWER	---	COUPLING	---	---	HYDRO POLE	---	---
250 WWS	WASTEWATER SEWER	---	REDUCER	---	---	SIGNAL CONTROLLER	---	---
300 CS	COMBINED SEWER	---	ANODE	---	---	RIGHT-OF-WAY	---	---
200 FCM	FORCEMAIN	---	MANHOLE	---	---	GAS	---	---
200 CS	JUNCTIONS	---	CATCHBASIN	---	---	HYDRO	---	---
---	HYDRANT	---	LIGHT STANDARD	---	---	MTS	---	---
---	VALVE	---	TREE	---	---	SUBDRAINS	---	---
---	CURB STOP	---	SURVEY BAR	---	---	ASPHALT OVERLAY	---	---

LOCATION APPROVED UNDERGROUND STRUCTURES

SUPV. U/G STRUCTURES COMMITTEE DATE

NOTE: LOCATION OF UNDERGROUND STRUCTURES AS SHOWN ARE BASED ON THE BEST INFORMATION AVAILABLE. BUT NO GUARANTEE IS GIVEN THAT ALL EXISTING UTILITIES ARE SHOWN OR THAT THE GIVEN LOCATIONS ARE EXACT. CONFIRMATION OF EXISTENCE AND EXACT LOCATION OF ALL SERVICES MUST BE OBTAINED FROM THE INDIVIDUAL UTILITIES BEFORE PROCEEDING WITH CONSTRUCTION.

GBM ELEV. SEE DWG No. 1
SEE DWG No. 1

0	ISSUED FOR CONSTRUCTION	14/04/04	KJM
No.	REVISIONS	YYMMDD	BY

TETRA TECH

DESIGNED BY GC, KJM
CHECKED BY KJM

DRAWN BY NL
APPROVED BY GS

HOR. SCALE: 1 : 250
VERT. SCALE: 1 : 50

RELEASED FOR CONSTRUCTION
DATE 14/03/07

PROVINCE OF MANITOBA
K.J. McRAE
REGISTERED PROFESSIONAL ENGINEER

CONSULTANT DRAWING NO.
1391640101-DWG-C0006

THE CITY OF WINNIPEG
PUBLIC WORKS DEPARTMENT
ENGINEERING DIVISION

2013 POLO PARK
INFRASTRUCTURE IMPROVEMENTS
ST. MATTHEWS AVENUE
LAND DRAINAGE SEWER AND WATERMAIN
STA 0+775 TO STA 0+890

CITY DRAWING NUMBER D-13585
SHEET 41 OF 61
DRAWING No. 41
REV 0

BID OPPORTUNITY No. 210-2014