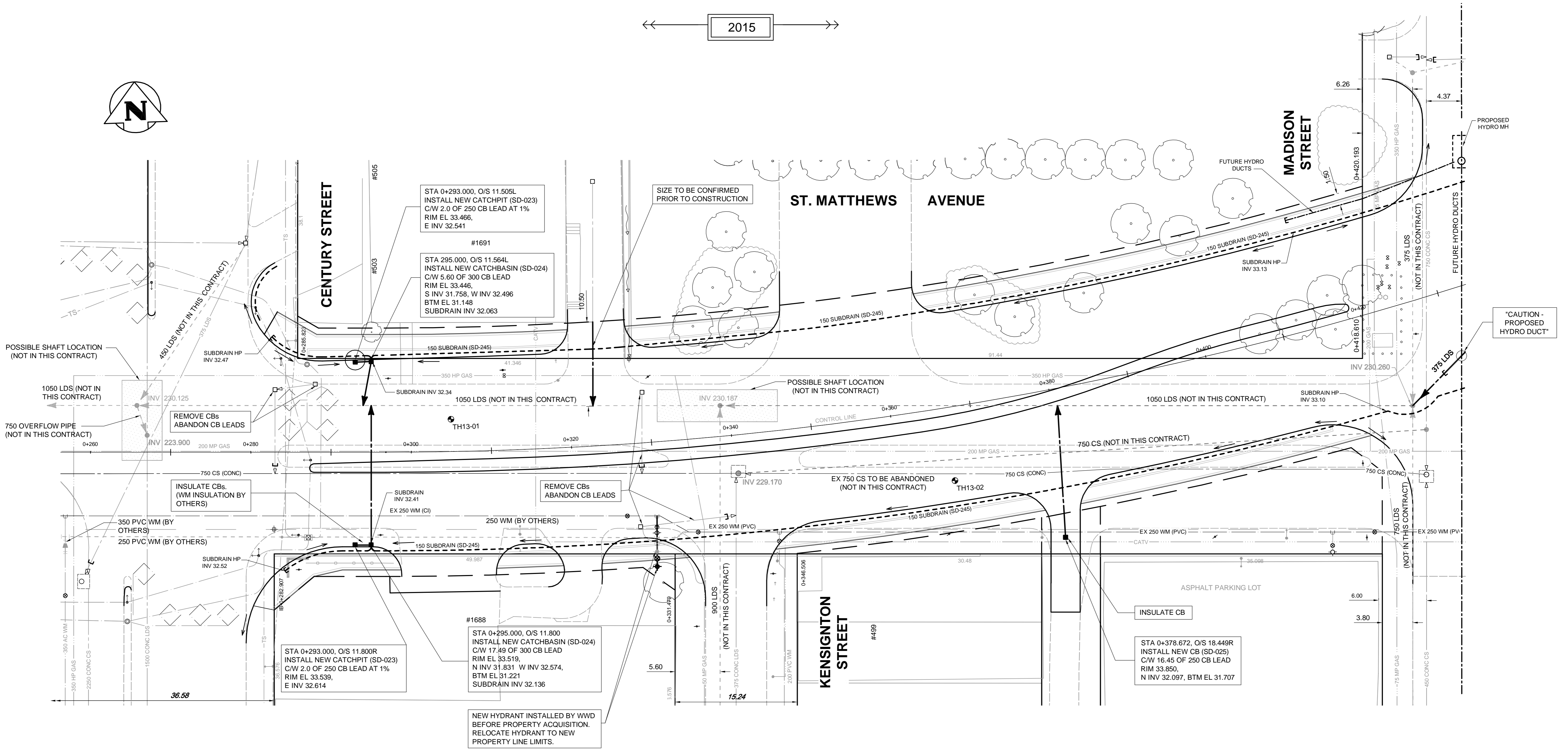
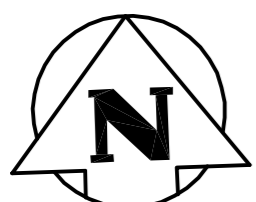
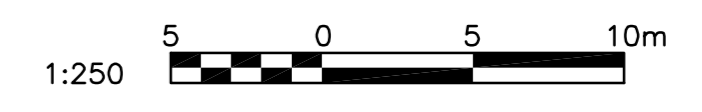


← 2015 →



**NOTE:**  
CATCH BASIN LEAD RISERS (SD-015 TYPE B) INSTALLED BY OTHERS.



**APEGM**  
Certificate of Authorization  
**TETRA TECH WEI Inc.**  
No. 5313 Date: April 30, 2014

BID OPPORTUNITY No. 210-2014

150 WM	WATERMAIN	---	---	BEND	↵	---	ANCHOR	⊥
400 FM	FEEDERMAIN	---	---	TEE	⊥	---	HYDRO BOX	⊥
300 LDS	LAND DRAINAGE SEWER	---	---	COUPLING	⊥	---	HYDRO POLE	⊥
250 WWS	WASTEWATER SEWER	---	---	REDUCER	⊥	---	SIGNAL CONTROLLER	⊥
300 CS	COMBINED SEWER	---	---	ANODE	⊥	---	RIGHT-OF-WAY	⊥
200 FCM	FORCEMAIN	---	---	MANHOLE	○	---	GAS	○
⊕	JUNCTIONS	---	---	CATCHBASIN	■	---	HYDRO	○
⊕	HYDRANT	---	---	LIGHT STANDARD	⊕	---	MTS	⊕
⊕	VALVE	---	---	TREE	⊕	---	SUBDRAINS	---
⊕	CURB STOP	---	---	SURVEY BAR	⊕	---	---	---
EXISTING	LEGEND-PLAN	PROPOSED	EXISTING	LEGEND-PLAN	PROPOSED	EXISTING	LEGEND-PLAN	PROPOSED

<b>LOCATION APPROVED UNDERGROUND STRUCTURES</b>		GBM SEE DWG No. 1	ELEV. SEE DWG No. 1
SUPV. U/G STRUCTURES COMMITTEE	DATE		
NOTE: LOCATION OF UNDERGROUND STRUCTURES AS SHOWN ARE BASED ON THE BEST INFORMATION AVAILABLE. BUT NO GUARANTEE IS GIVEN THAT ALL EXISTING UTILITIES ARE SHOWN OR THAT THE GIVEN LOCATIONS ARE EXACT. CONFIRMATION OF EXISTENCE AND EXACT LOCATION OF ALL SERVICES MUST BE OBTAINED FROM THE INDIVIDUAL UTILITIES BEFORE PROCEEDING WITH CONSTRUCTION.			
0	ISSUED FOR CONSTRUCTION	14/04/04	KJM
No.	REVISIONS	YYMMDD	BY

**TETRA TECH**

DESIGNED BY	GC, KJM	CHECKED BY	KJM
DRAWN BY	NL	APPROVED BY	GS
HOR. SCALE:	1 : 250	RELEASED FOR CONSTRUCTION	
VERT. SCALE:	1 : 50	DATE	14/03/07

**PRELIMINARY DRAWING**

NOT TO BE USED FOR CONSTRUCTION

CONSULTANT DRAWING NO.  
1391640101-DWG-C0002

**THE CITY OF WINNIPEG**  
PUBLIC WORKS DEPARTMENT  
ENGINEERING DIVISION

2013 POLO PARK  
INFRASTRUCTURE IMPROVEMENTS  
ST. MATTHEWS AVENUE  
LAND DRAINAGE SEWER AND WATERMAIN (FUTURE)  
CATCHBASIN CONNECTIONS EAST OF CENTURY

CITY DRAWING NUMBER	LD-7335
SHEET	37 OF 61
DRAWING No.	37
REV	0