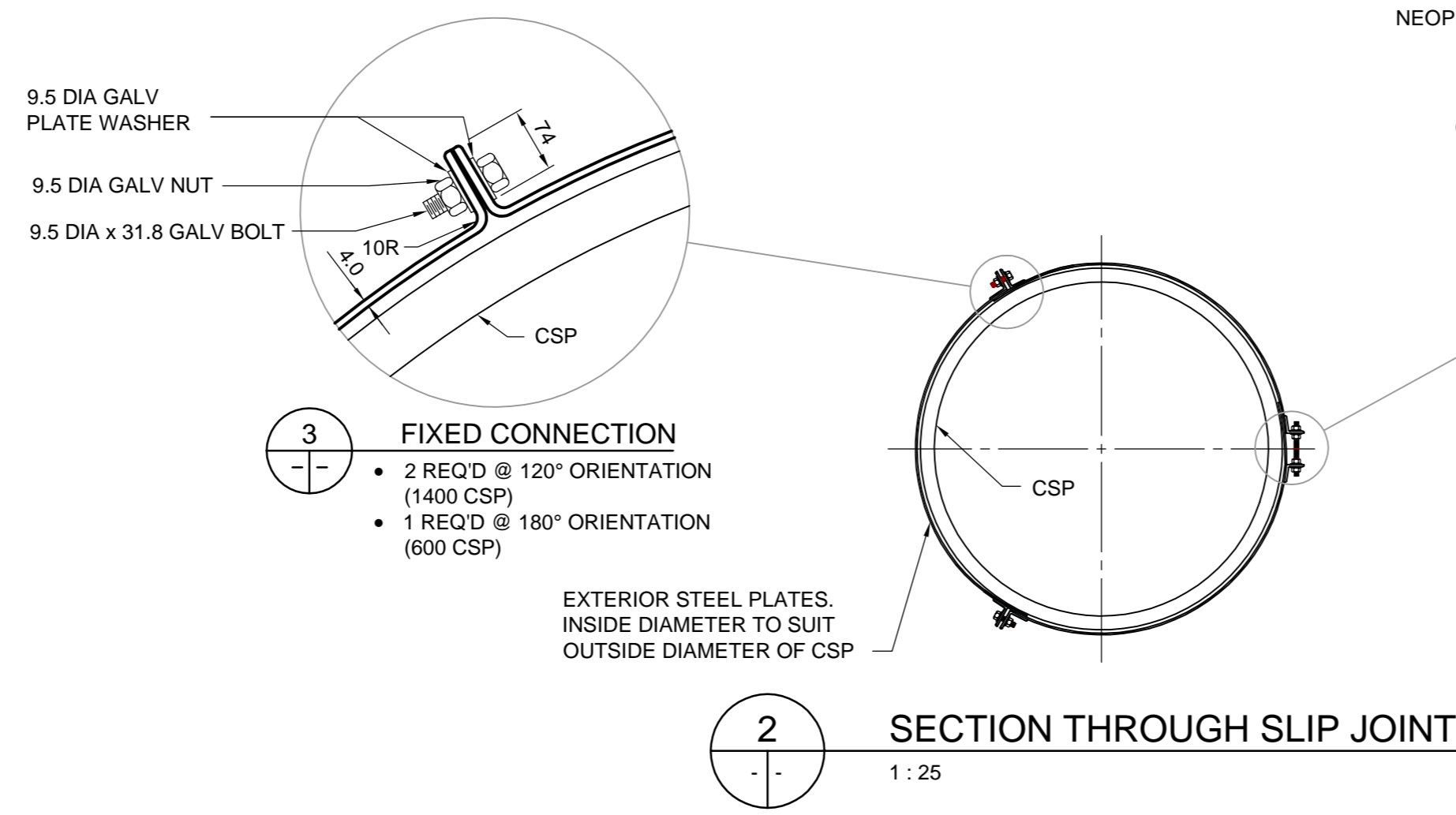
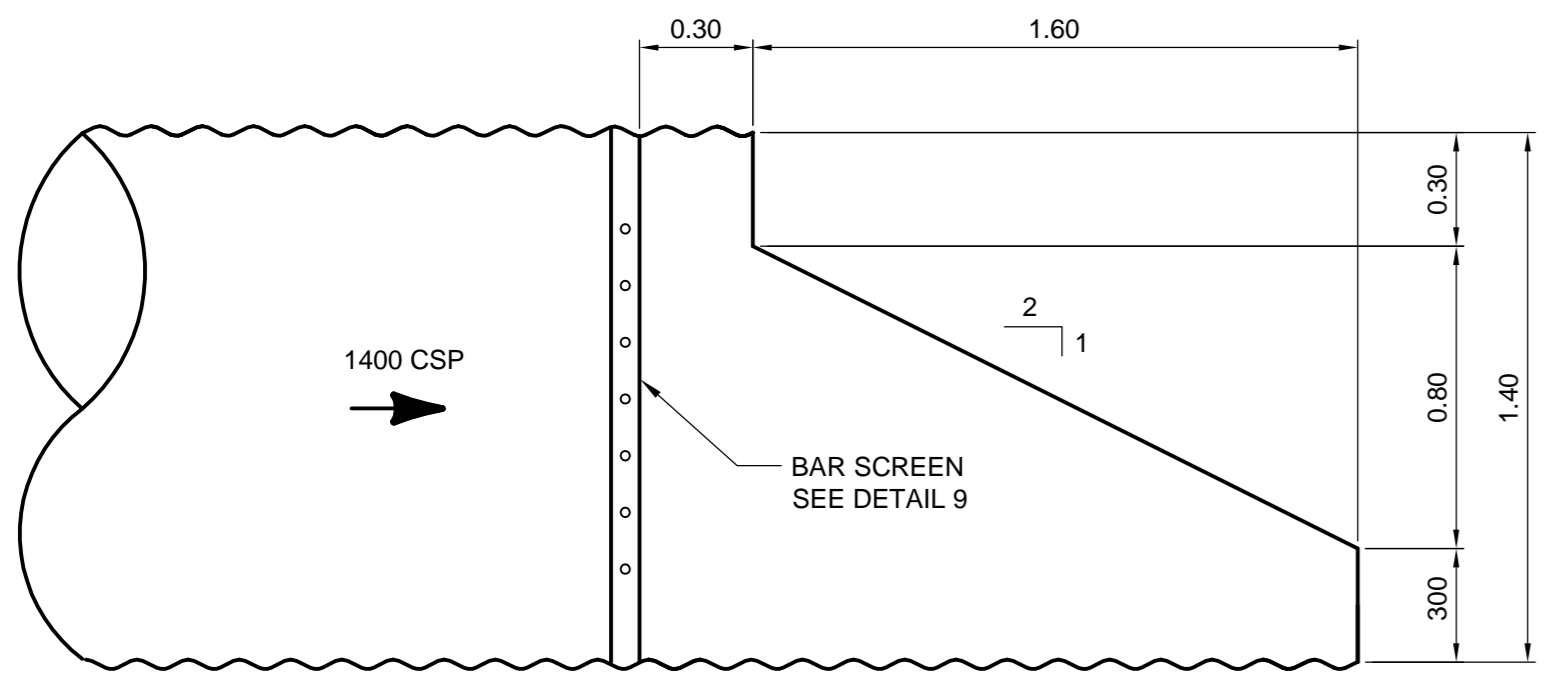


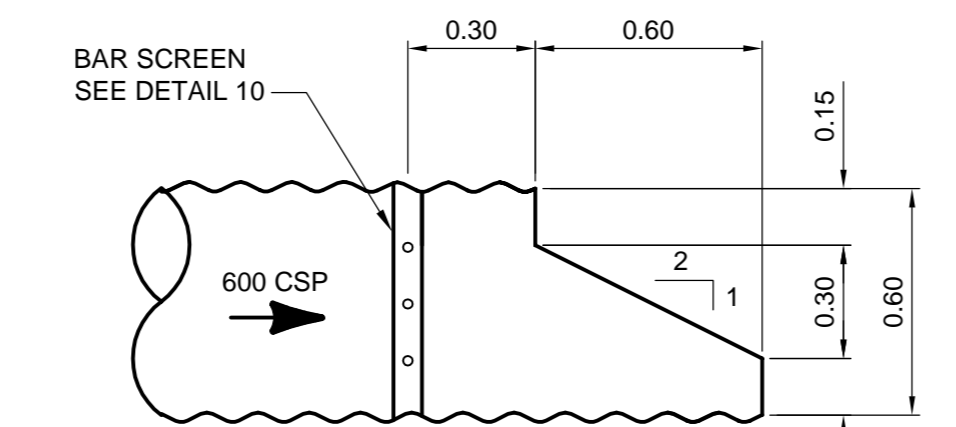
1 EXTERNAL SLIP JOINT  
1:25



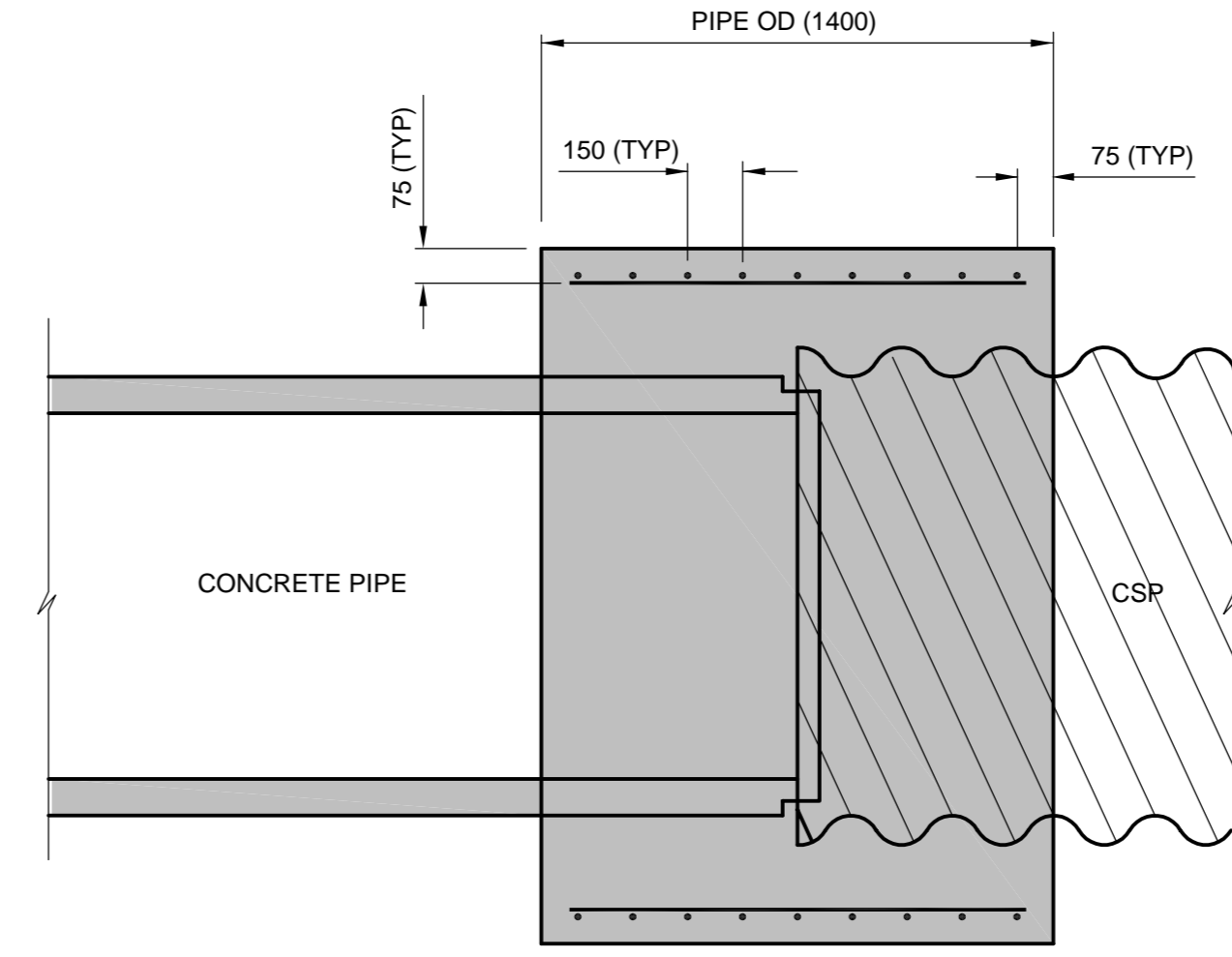
2 SECTION THROUGH SLIP JOINT  
1:25



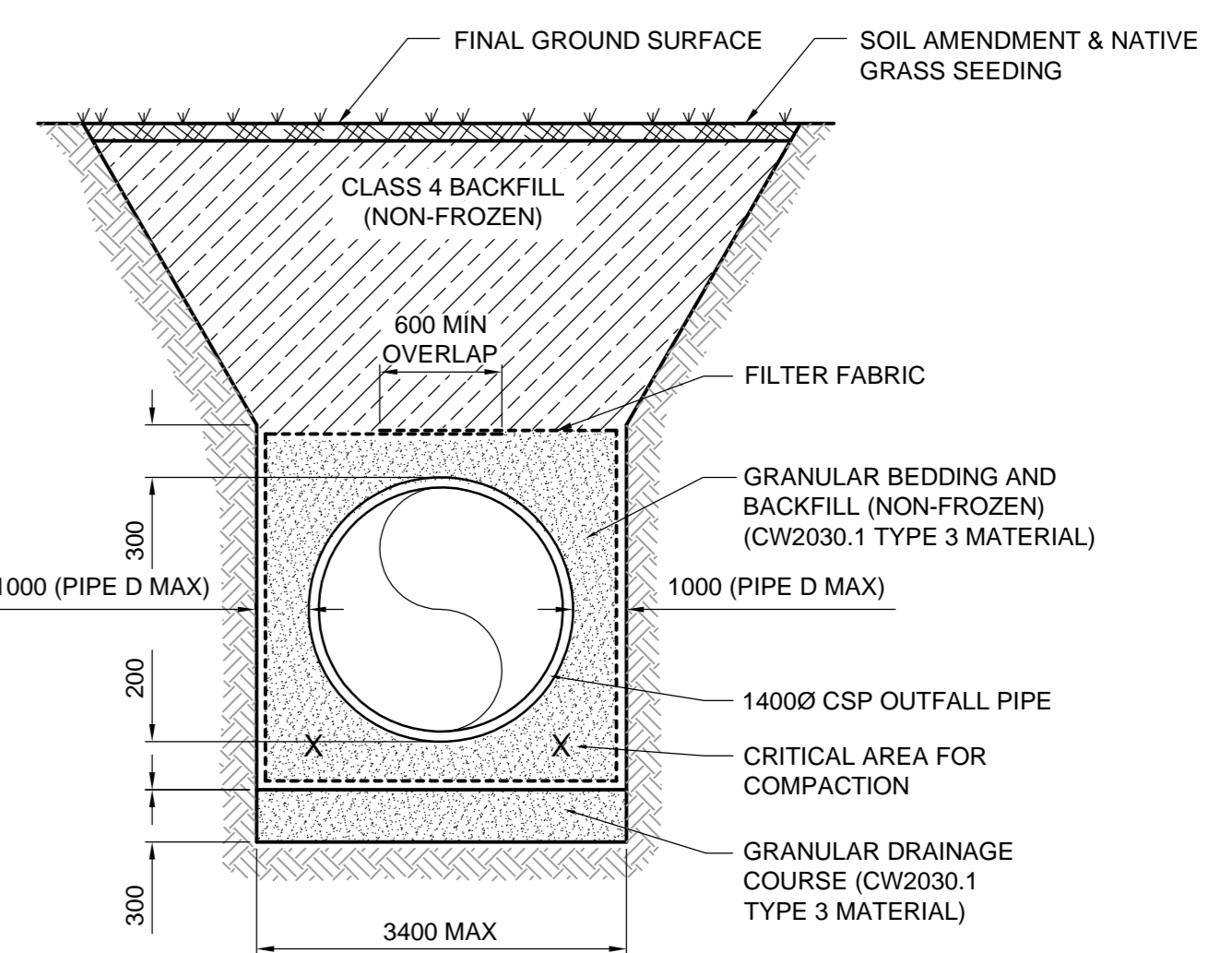
6 CULVERT STEP BEVEL DETAIL  
ELLICE/ST. MATTHEWS (WEST)  
1:20



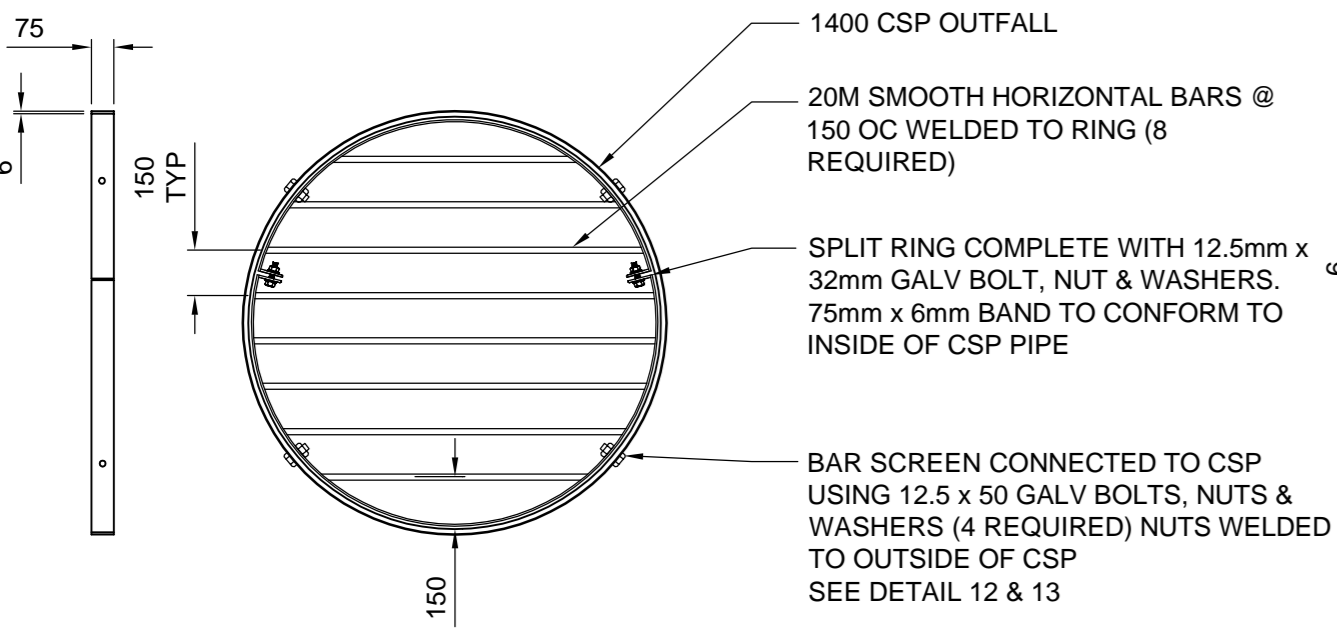
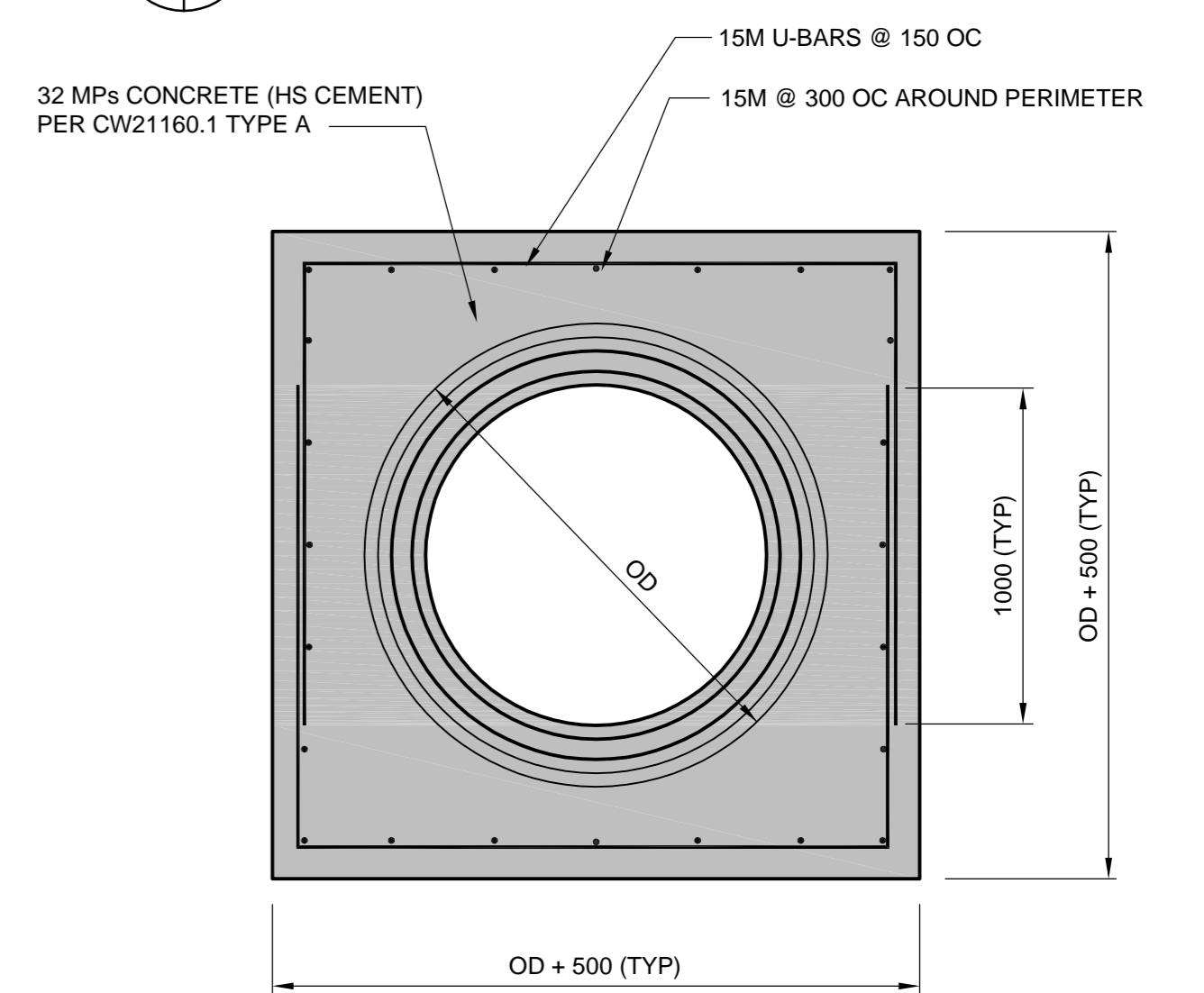
7 CULVERT STEP BEVEL DETAIL  
ST. MATTHEWS (EAST)  
1:20



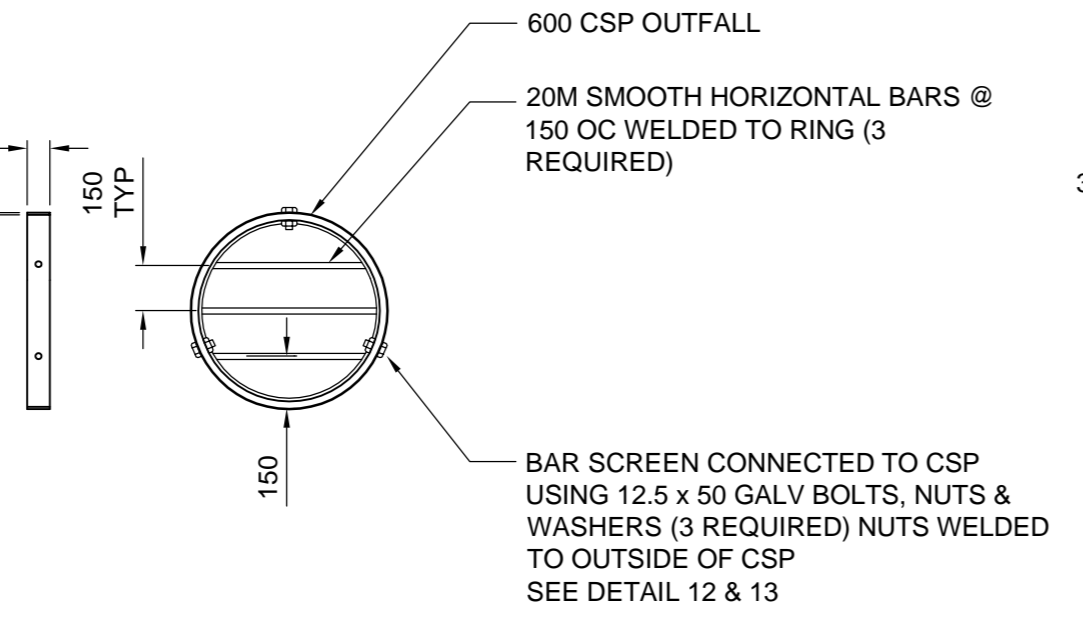
8 CONCRETE COLLAR  
1:50



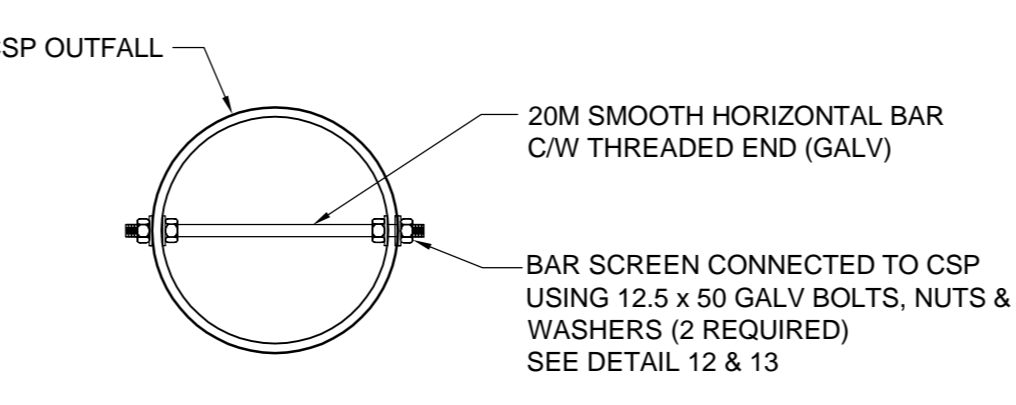
5 1400 CSP TRENCH  
NTS



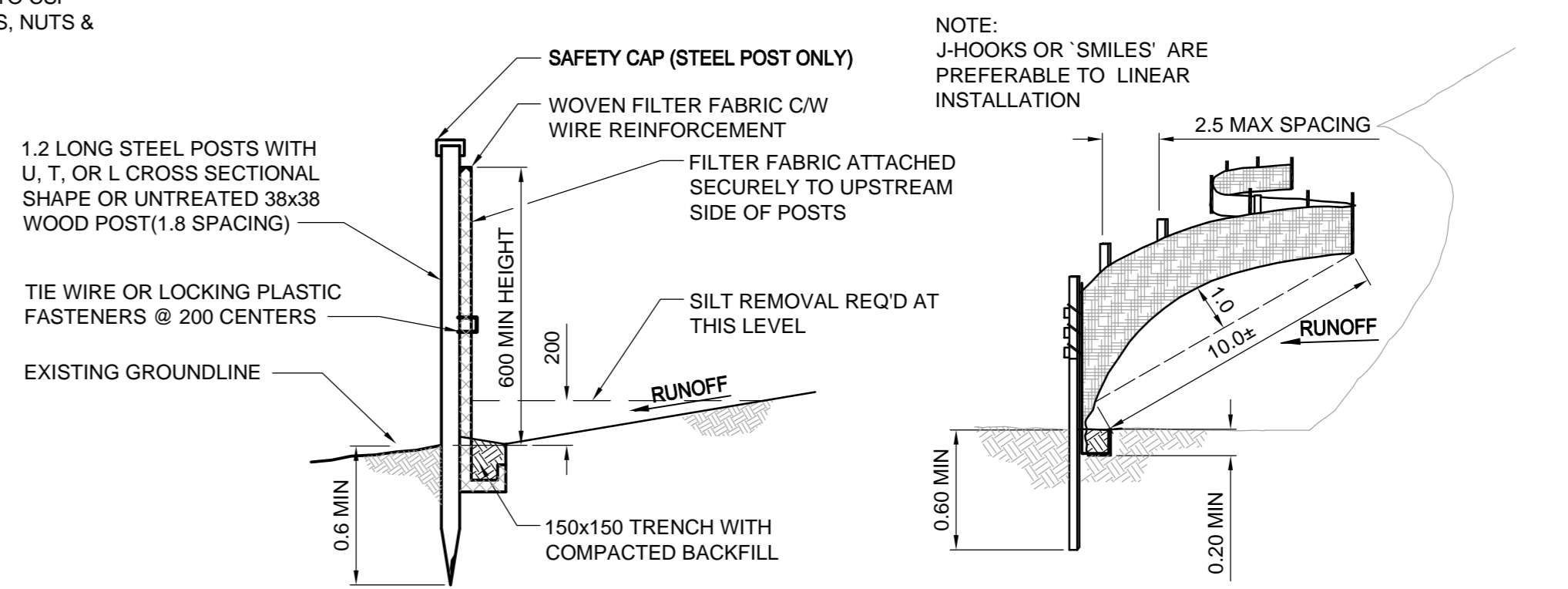
9 BAR SCREEN (FOR 1400 CSP)  
1:25  
GALVANIZE AFTER FABRICATION



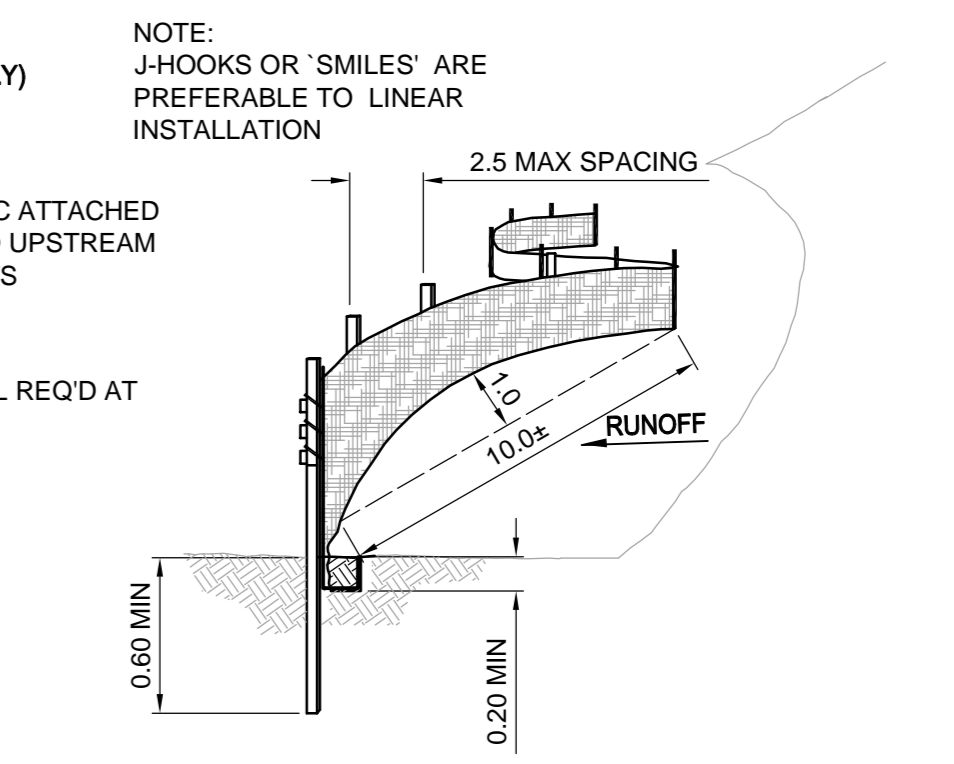
10 BAR SCREEN (FOR 600 CSP)  
1:25  
GALVANIZE AFTER FABRICATION



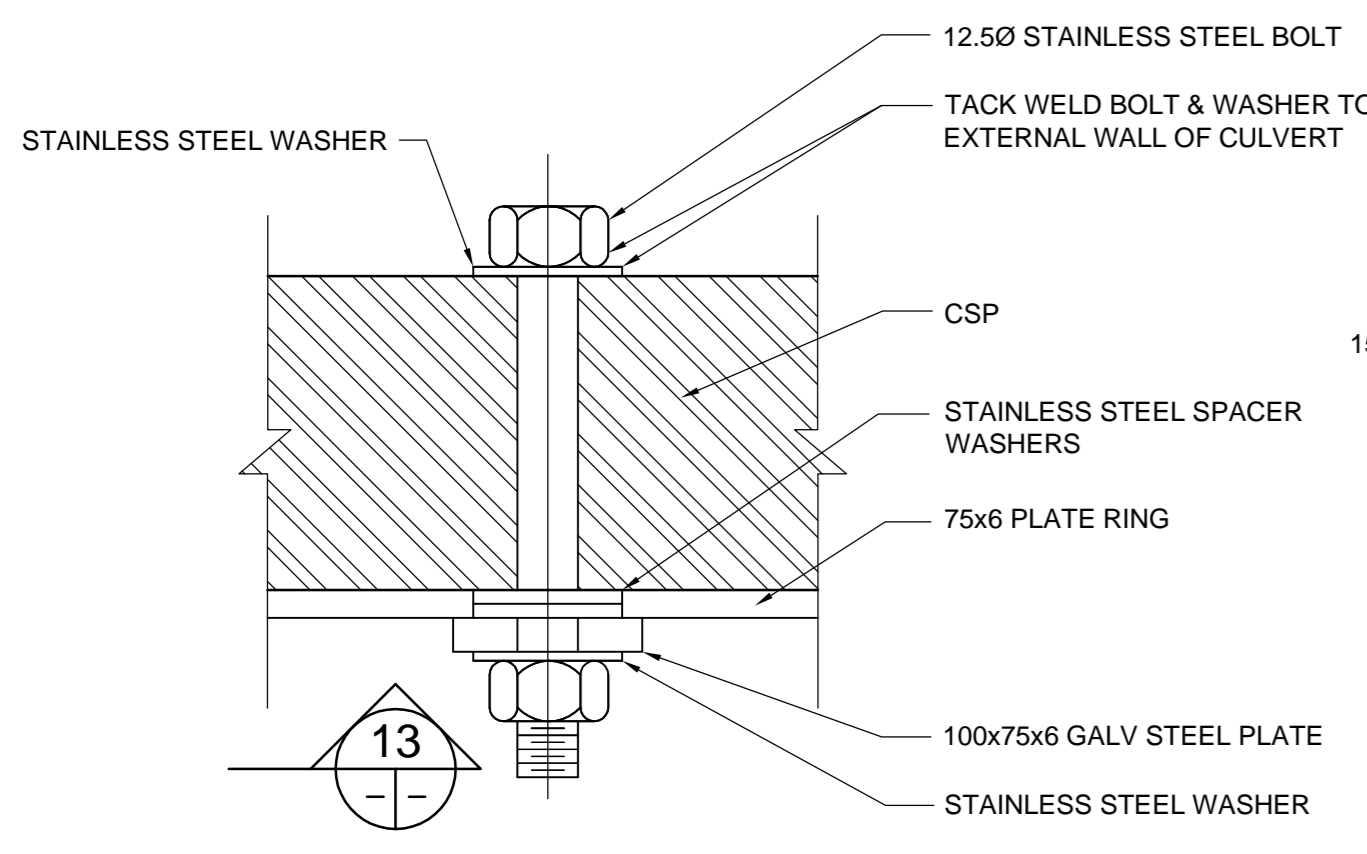
11 BAR SCREEN (FOR 300 CSP)  
1:10



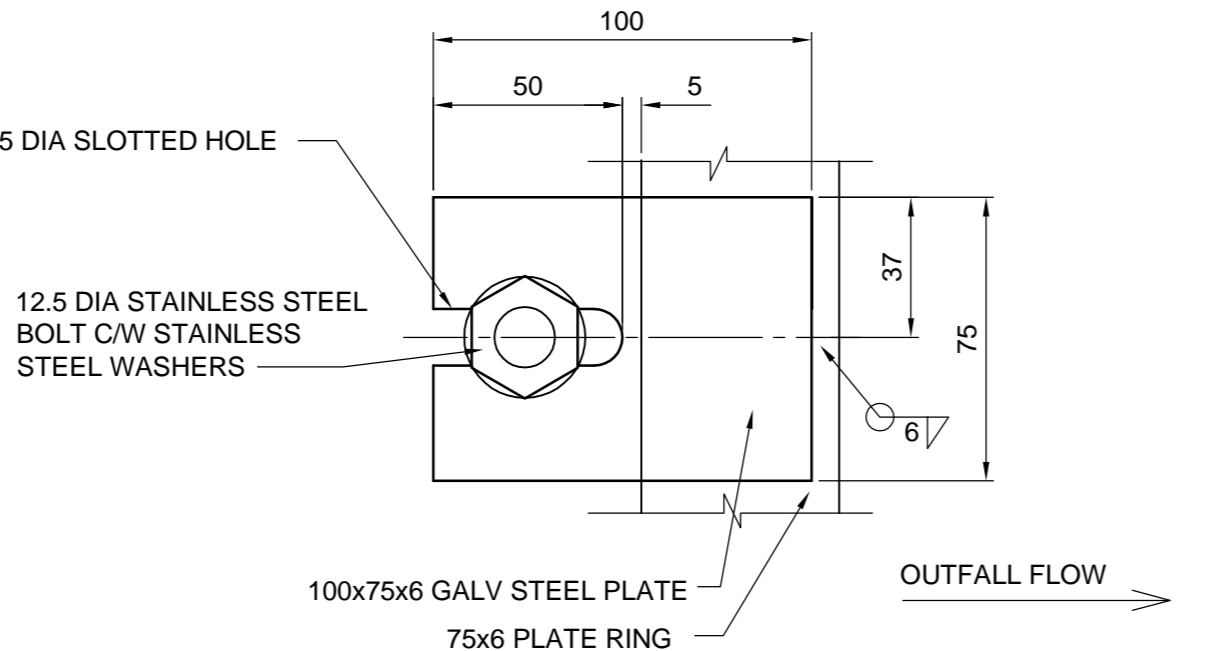
14 TYPICAL SILT FENCE DETAIL  
1:25



15 TYPICAL FENCING PLACEMENT  
NTS



12 BAR SCREEN BOLTING DETAIL  
NTS



13 BAR SCREEN REMOVAL PLATE DETAIL  
NTS

GBM	SEE DWG No. 1			
ELEV.	SEE DWG No. 1			
No.	REVISIONS	YYMMDD	BY	DATE

<b>TETRA TECH</b>	
DESIGNED BY	KJM
CHECKED BY	GC
DRAWN BY	GMD
APPROVED BY	GS
HOR. SCALE:	AS NOTED
VERT. SCALE:	
DATE	14/03/14



**THE CITY OF WINNIPEG**  
PUBLIC WORKS DEPARTMENT  
ENGINEERING DIVISION

2013 POLO PARK  
INFRASTRUCTURE IMPROVEMENTS  
OUTFALL DETAILS

CITY DRAWING NUMBER LD-7340  
SHEET 59 OF 61  
DRAWING No. 59  
REV 0

BID OPPORTUNITY No. 210-2014