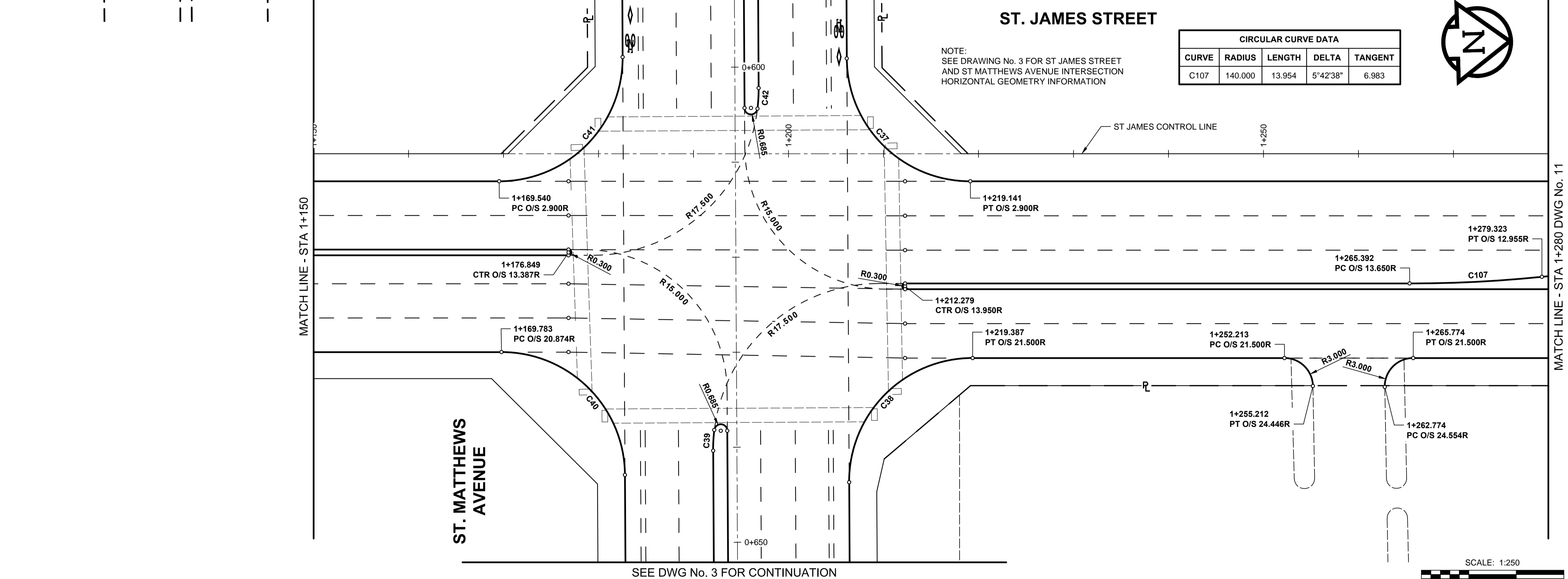
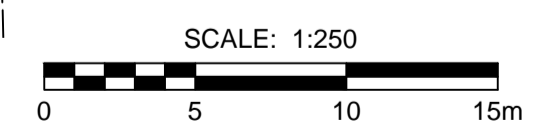


CIRCULAR CURVE DATA				
CURVE	RADIUS	LENGTH	DELTA	TANGENT
C103	139.400	13.894	5°42'38"	6.953
C104	140.600	14.013	5°42'38"	7.012
C105	140.000	13.954	5°42'38"	6.983
C106	140.000	13.954	5°42'38"	6.983



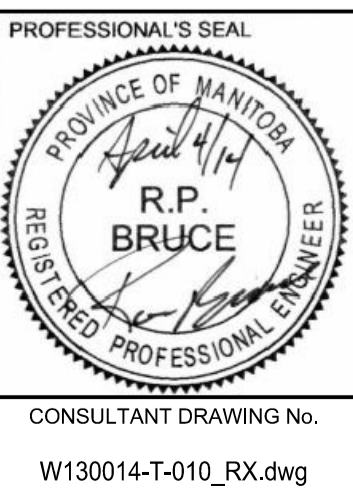
CIRCULAR CURVE DATA				
CURVE	RADIUS	LENGTH	DELTA	TANGENT
C107	140.000	13.954	5°42'38"	6.983

NOTE:
SEE DRAWING No. 3 FOR ST JAMES STREET
AND ST MATTHEWS AVENUE INTERSECTION
HORIZONTAL GEOMETRY INFORMATION

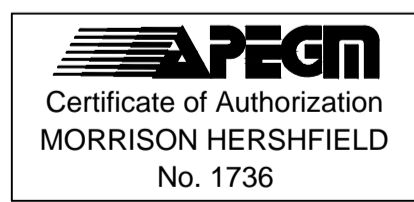


LOCATION APPROVED UNDERGROUND STRUCTURES	
SUPR. U/G STRUCTURES COMMITTEE	DATE
NOTE: LOCATION OF UNDERGROUND STRUCTURES AS SHOWN ARE BASED ON THE BEST INFORMATION AVAILABLE. BUT NO GUARANTEE IS GIVEN THAT ALL EXISTING UTILITIES ARE SHOWN OR THAT THE GIVEN LOCATIONS ARE EXACT. CONFIRMATION OF EXISTENCE AND EXACT LOCATION OF ALL SERVICES MUST BE OBTAINED FROM THE INDIVIDUAL UTILITIES BEFORE PROCEEDING WITH CONSTRUCTION.	
0	ISSUED FOR CONSTRUCTION 14/04/04 RPB
No.	REVISIONS YYMMDDI BY

MORRISON HERSHFIELD	
DESIGNED BY: WRJ	CHECKED BY: RPB
DRAWN BY: DID/DML	APPROVED BY: BWB
HOR. SCALE: 1:250	RELEASED FOR CONSTRUCTION: <i>STK</i>
VERT. SCALE:	DATE: 14/04/04



THE CITY OF WINNIPEG PUBLIC WORKS DEPARTMENT ENGINEERING DIVISION	
POLO PARK INFRASTRUCTURE IMPROVEMENTS ST JAMES STREET HORIZONTAL GEOMETRY STA 1+020 TO STA 1+280	
CITY DRAWING NUMBER: P-3354-10	SHEET 10 OF 61
DRAWING No. 10	REV 0



BID OPPORTUNITY No. 210-2014