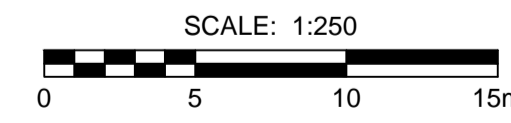


ELLICE CENTERLINE ALIGNMENT COORDINATES		
POINT/STATION	NORTHING	EASTING
POT 0+890.000	10416.775	10540.275

CIRCULAR CURVE DATA				
CURVE	RADIUS	LENGTH	DELTA	TANGENT
C90	500.000	1.551	0°10'40"	0.776
C91	500.000	7.394	0°50'50"	3.697
C92	500.000	20.737	2°22'35"	10.370
C93	115.000	15.497	7°43'15"	7.760
C94	492.750	12.745	1°28'55"	6.373
C95	50.000	4.947	5°40'08"	2.475
C96	492.750	24.618	2°51'45"	12.311
C97	500.000	15.210	1°44'35"	7.606
C98	500.000	24.980	2°51'45"	12.493

CIRCULAR CURVE DATA				
CURVE	RADIUS	LENGTH	DELTA	TANGENT
C148	496.375	24.799	2°51'45"	12.402
C149	503.625	25.161	2°51'45"	12.583
C150	492.750	11.872	1°22'50"	5.936
C151	507.250	25.342	2°51'45"	12.674
C152	507.250	25.342	2°51'45"	12.674
C153	496.375	24.799	2°51'45"	12.402
C154	503.625	25.161	2°51'45"	12.583



BID OPPORTUNITY No. 210-2014



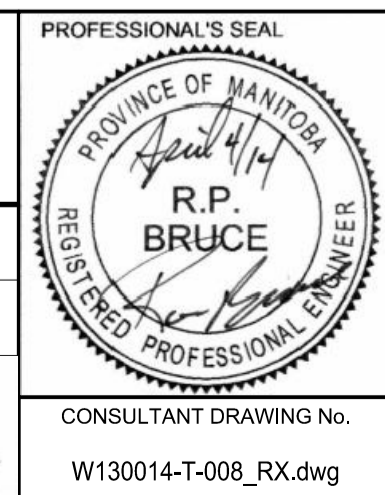
THE CITY OF WINNIPEG
PUBLIC WORKS DEPARTMENT
ENGINEERING DIVISION

POLO PARK
INFRASTRUCTURE IMPROVEMENTS
ELLICE AVENUE
HORIZONTAL GEOMETRY
STA 0+760 TO STA 0+890

CITY DRAWING NUMBER
P-3354-8
SHEET 8 OF 61
DRAWING No. 8
REV 0

LOCATION APPROVED UNDERGROUND STRUCTURES		GBM SEE DWG No.1 ELEV SEE DWG No.1	
SUPR. U/G STRUCTURES COMMITTEE	DATE		
NOTE: LOCATION OF UNDERGROUND STRUCTURES AS SHOWN ARE BASED ON THE BEST INFORMATION AVAILABLE. BUT NO GUARANTEE IS GIVEN THAT ALL EXISTING UTILITIES ARE SHOWN OR THAT THE GIVEN LOCATIONS ARE EXACT. CONFIRMATION OF EXISTENCE AND EXACT LOCATION OF ALL SERVICES MUST BE OBTAINED FROM THE INDIVIDUAL UTILITIES BEFORE PROCEEDING WITH CONSTRUCTION.			
0	ISSUED FOR CONSTRUCTION	14/04/04	RPB
No.	REVISIONS	YYMMDD	BY

MORRISON HERSHFIELD			
DESIGNED BY	WRJ	CHECKED BY	RPB
DRAWN BY	DID/DML	APPROVED BY	BWB
HOR. SCALE	1:250	RELEASED FOR CONSTRUCTION	
VERT. SCALE		DATE	APR 4/14
DATE	14/04/04		



METRIC
WHOLE NUMBERS INDICATE MILLIMETRES
DECIMALIZED NUMBERS INDICATE METRES