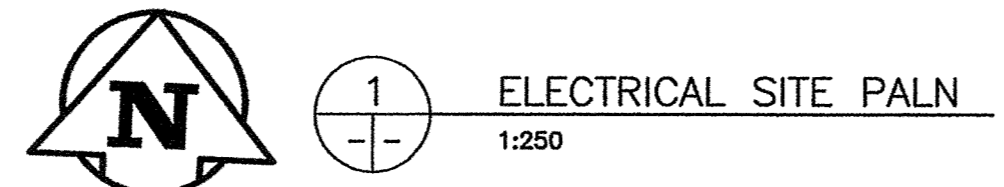


- KEYNOTES:**
- 1 PROVIDE LUMINAIRES, POLES, PILE FOUNDATIONS, MOUNTING HARDWARE, CONDUIT, WIRE, CABLE, BOXES, CIRCUIT BREAKERS, CONTACTORS, CONTROLLERS, TRENCHING, SAND, BACKFILL, MARKING TAPE, SURFACE RESTORATION, AND ALL OTHER WORKS REQUIRED TO PROVIDE COMPLETE AND FUNCTIONAL LIGHTING AND SYSTEMS.
  - 2 MAKE A DETAILED RECORD OF BURIED CONDUIT AND CABLE ROUTES, BURIAL DEPTHS, AND OTHER DETAILS ON RECORD DRAWINGS AT THE TIME OF INSTALLATION OF ANY CONDUIT OR CABLE. (TYP.).
  - 3 SUPPLY AND INSTALL TYPE 'A' LIGHT STANDARD C/W 150mmØ ROUND STRAIGHT 9144mm HIGH POLES BY VALMONT ENGINEERING MODEL 6RS-30-0.2 DARK BRONZE. SEE LUMINAIRE SCHEDULE, PROVIDE PROGRAMMING TO MOTION SENSOR. MOTION SENSOR SHALL BE MOUNTED TO POLES. COORDINATE MOUNTING HEIGHT WITH MANUFACTURER PRIOR TO INSTALLATION.
  - 4 APPROXIMATE LOCATION OF EXISTING PANEL D. PROVIDE NEW 60A-3P TO FEED THE NEW PANEL D2. NEW BREAKER SHALL MATCH EXISTING INTERRUPTING RATING CAPACITY AND TYPE. UPDATE PANEL SCHEDULE IN EXISTING PANELBOARD PANEL 'D'. REFER TO DRAWING E02 FOR DETAIL.
  - 5 NOT USED.
  - 6 DISCONNECT AND REMOVE EXISTING PARKING LOT LIGHT FIXTURES, LIGHT POLES, WIRING, CONDUITS AND ASSOCIATED ACCESSORIES BACK TO EXISTING PANEL 'D'. REMOVAL OF EXISTING CONCRETE PILES BY CIVIL, REFER TO CIVIL DEMOLITION PLAN DRAWING C01.
  - 7 APPROXIMATE LOCATION OF CONDUIT PENETRATION THROUGH WALL. PROVIDE SEAL PENETRATION ON BOTH SIDES OF WALLS. SEALS SHALL BE WATER TIGHT.
  - 8 NOT USED.
  - 9 NEW WEATHERPROOF PANELBOARD PANEL 'D2'. SEE DRAWING E02 FOR PANEL SCHEDULE AND MOUNTING DETAIL.
  - 10 PROVIDE IPLC DUPLEX PARKING PLUG RECEPTACLE SPLIT CIRCUIT IN NEMA 3R ENCLOSURE. ENCLOSURE SHALL BE TYPE P202 SERIES BY J.R. STEPHENSON OR APPROVED EQUIVALENT IN ACCORDANCE WITH B7. SUBMIT SHOP DRAWING PRIOR TO PURCHASE.
  - 11 APPROXIMATE LOCATION OF EXISTING LIGHTING CONTACTORS PANEL AND TIMER. DISCONNECT AND REMOVE EXISTING EQUIPMENT AND ASSOCIATED ACCESSORIES BACK TO SOURCE OF PANEL.
  - 12 REMOVE EXISTING PARKING PLUGS, WIRING, CONDUITS AND ASSOCIATED ACCESSORIES BACK TO EXISTING PANEL 'D'.

- GENERAL NOTES:**
1. ELECTRICAL SUBCONTRACTOR TO VISIT SITE PRIOR TO SUBMITTING BID, REVIEW EXISTING SITE THOROUGHLY AND CONFIRM PERTINENT EXISTING DEVICE LOCATIONS, EXISTING WIRING ROUTING AND FAMILIARIZE WITH COMPLETE SCOPE OF DEMOLITION AND RENOVATION WORK. NO ADDITIONAL COST WILL BE CONSIDERED FOR ITEMS THAT WOULD HAVE BEEN OBSERVABLE ON SITE.
  2. EXISTING FLOOR PLAN AND EXISTING ELECTRICAL SYSTEM ARE BASED ON CLIENT MADE AVAILABLE DRAWINGS. ONUS IS ON CONTRACTOR TO VERIFY EXISTING SITE CONDITIONS, EXISTING ELECTRICAL SYSTEMS AND FAMILIARIZE THEMSELVES PRIOR TO BID SUBMISSION.
  3. THE DRAWINGS ONLY SHOWS A GENERAL SCHEMATIC OF NEW SYSTEMS. ROUTING OF CONDUITS OR CABLES AND LOCATION SHALL SUIT SITE CONDITIONS AND MAY HAVE TO BE CHANGED TO AVOID CONFLICTS WITH EXISTING STRUCTURE OR EXISTING CONDUITS ROUTING. WHEN CONFLICT CAN NOT BE AVOIDED, THE EXISTING SERVICE SHALL BE MODIFIED AS DEEMED NECESSARY TO SUITE THE NEW ELECTRICAL INSTALLATION. THE MODIFICATION SHALL COMPLY TO LATEST EDITION OF CEC AND LOCAL REGULATIONS.
  4. WHERE EXISTING WIRING HAVE BEEN INSTALLED THROUGH PROPOSED DEMOLITION AND RENOVATION AREAS BUT FEEDING OTHER ADJACENT EXISTING AREAS SHALL REMAIN OPERATIONAL AT ALL TIMES. WHERE CONFLICT CANNOT BE AVOIDED, THE EXISTING WIRING SHALL BE MODIFIED AS DEEMED NECESSARY TO SUITE THE SITE CONDITION. THE MODIFICATION SHALL COMPLY TO LATEST EDITION OF CEC AND LOCAL REGULATION. POWER INTERRUPTION SHALL BE KEPT TO MINIMUM AND COORDINATED WITH THE CITY PRIOR TO SHUTDOWN.
  5. DO NOT SCALE DRAWINGS, CONTRACTOR SHALL VERIFY ALL DIMENSIONS PRIOR TO ELECTRICAL INSTALLATION. REPORT ANY DISCREPANCY TO THE CONTRACT ADMINISTRATOR PRIOR TO COMMENCING ROUGH-IN.
  6. CONTRACT DOCUMENT DRAWINGS FOR ELECTRICAL WORK ARE DIAGRAMMATIC AND ARE INTENDED TO CONVEY SCOPE AND GENERAL ARRANGEMENT ONLY.
  7. INSTALL ALL ELECTRICAL EQUIPMENT AND APPURTENANCES IN ACCORDANCE WITH MANUFACTURERS' RECOMMENDATIONS, CONTRACT DOCUMENTS, AND APPLICABLE CODES AND REGULATIONS.
  8. COORDINATE CONSTRUCTION OF ALL ELECTRICAL WORK WITH CIVIL WORK.
  9. SHOULD TEMPORARY POWER CONNECTIONS BE REQUIRED TO MAINTAIN SERVICE DURING WORK IN BUILDING. SUPPLY AND INSTALL ALL NECESSARY MATERIAL, EQUIPMENT AND LABOR AT NO EXTRA COST TO CLIENT. SHOULD ANY SYSTEM BE DAMAGED, MAKE FULL REPAIRS WITHOUT EXTRA COST AND TO THE SATISFACTION OF THE CITY AND THE CONTRACT ADMINISTRATOR.
  10. WHERE CABLES AND CONDUITS HAVE BEEN INSTALLED THROUGH EXISTING FIRE RATED WALLS. ELECTRICAL SUBCONTRACTOR SHALL SEAL OPENINGS AROUND CABLES AND CONDUITS TO MAINTAIN EXISTING FIRE RATING. USE ULC RATED SYSTEM FOR EACH PENETRATION. REFER TO SPECIFICATIONS.
  11. WHERE TWO OR MORE ITEMS OF THE SAME TYPE OF EQUIPMENT ARE REQUIRED, THE PRODUCT OF ONE MANUFACTURER SHALL BE USED. ALL MATERIAL SHALL BE NEW AND THE BEST OF ITS RESPECTIVE KIND.
  12. ELECTRICAL SUBCONTRACTOR TO BE RESPONSIBLE FOR ALL WALL CORE DRILLING/CUTTING, PATCHING AND PAINTING FOR ELECTRICAL WORKS. SCANS MAY BE REQUIRED BEFORE PENETRATIONS ARE MADE. DO NOT CUT REINFORCING STEEL STRUCTURES, FOLLOW SPECIFIC THE CITY PROCEDURES ON CUTTING, CORING AND PATCHING.



LUMINAIRE SCHEDULE

TYPE	DESCRIPTION	CATALOG No.	LAMP	VOLT	MANUFACTURER	COMMENTS
	DSX2LED, 700mA DRIVERS, 4000K LED, TYPE T4M OPTICS OR APPROVED EQUIVALENT BY CREE AND COOPER LIGHTING.	DSX2LED-80C-700-40K-T4M-DBXD-PIRH-120 OR APPROVED EQUIVALENT BY CREE AND COOPER LIGHTING.	LED	120V	LIGHTONIA LIGHTING OR APPROVED EQUIVALENT BY CREE AND COOPER LIGHTING.	POLE 150mmØ x 9144mm HIGH, CAT.# 6RS-30-0.2 BY VALMONT ENGINEERING OR APPROVED EQUIVALENT.

**METRIC**  
WHOLE NUMBERS INDICATE MILLIMETRES  
DECIMALIZED NUMBERS INDICATE METRES



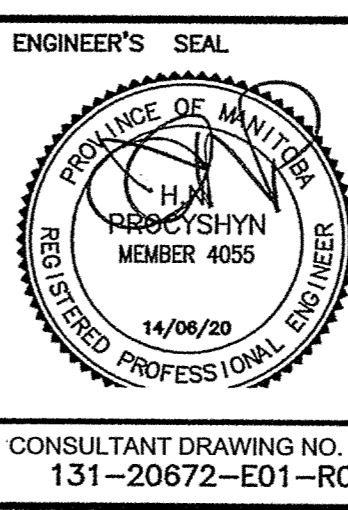
EXISTING	LEGEND - PLAN	PROPOSED	EXISTING	LEGEND - PLAN	PROPOSED	EXISTING	LEGEND - PROFILE	PROPOSED
	LAMP STANDARD			DOUBLE HEAD LIGHT STANDARD			IPLC	
	JUNCTION BOX			UNDERGROUND WIRING			CIRCUIT BREAKER	
	CIRCUIT BREAKER			PANEL BOARD				

**LOCATION APPROVED**  
UNDERGROUND STRUCTURES

SUPV. U/G STRUCTURES COMMITTEE DATE

NOTE:  
LOCATION OF UNDERGROUND STRUCTURES AS SHOWN ARE BASED ON THE BEST INFORMATION AVAILABLE BUT NO GUARANTEE IS GIVEN THAT ALL EXISTING UTILITIES ARE SHOWN OR THAT THE GIVEN LOCATIONS ARE EXACT. CONFIRMATION OF EXISTENCE AND EXACT LOCATION OF ALL SERVICES MUST BE OBTAINED FROM THE INDIVIDUAL UTILITIES BEFORE PROCEEDING WITH CONSTRUCTION.

DESIGNED BY	D.G.	CHECKED BY	H.P.
DRAWN BY	O.N./D.G.	APPROVED BY	H.P.
HOR. SCALE:	1:250 (A1)	RELEASED FOR CONSTRUCTION	
VERT. SCALE:			
1 ISSUED FOR TENDER	14/04/20		
NO. REVISIONS	DATE	BY	DATE: APRIL 2014



**WSP** 1600 BUFFALO PLACE WINNIPEG, MB, CANADA, R3T 6B8 PHONE: 204-477-6600 FAX: 204-474-2844 WWW.WSPGROUP.COM

**THE CITY OF WINNIPEG**  
PLANNING, PROPERTY & DEVELOPMENT

**SEVEN OAKS POOL**  
PARKING LOT RECONSTRUCTION PROJECT  
ELECTRICAL SITE PLAN

CITY DRAWING NO. 23-2014-E01  
SHEET 1 OF 2  
REV. E01 0

CONSULTANT DRAWING NO. 131-20672-E01-R0