

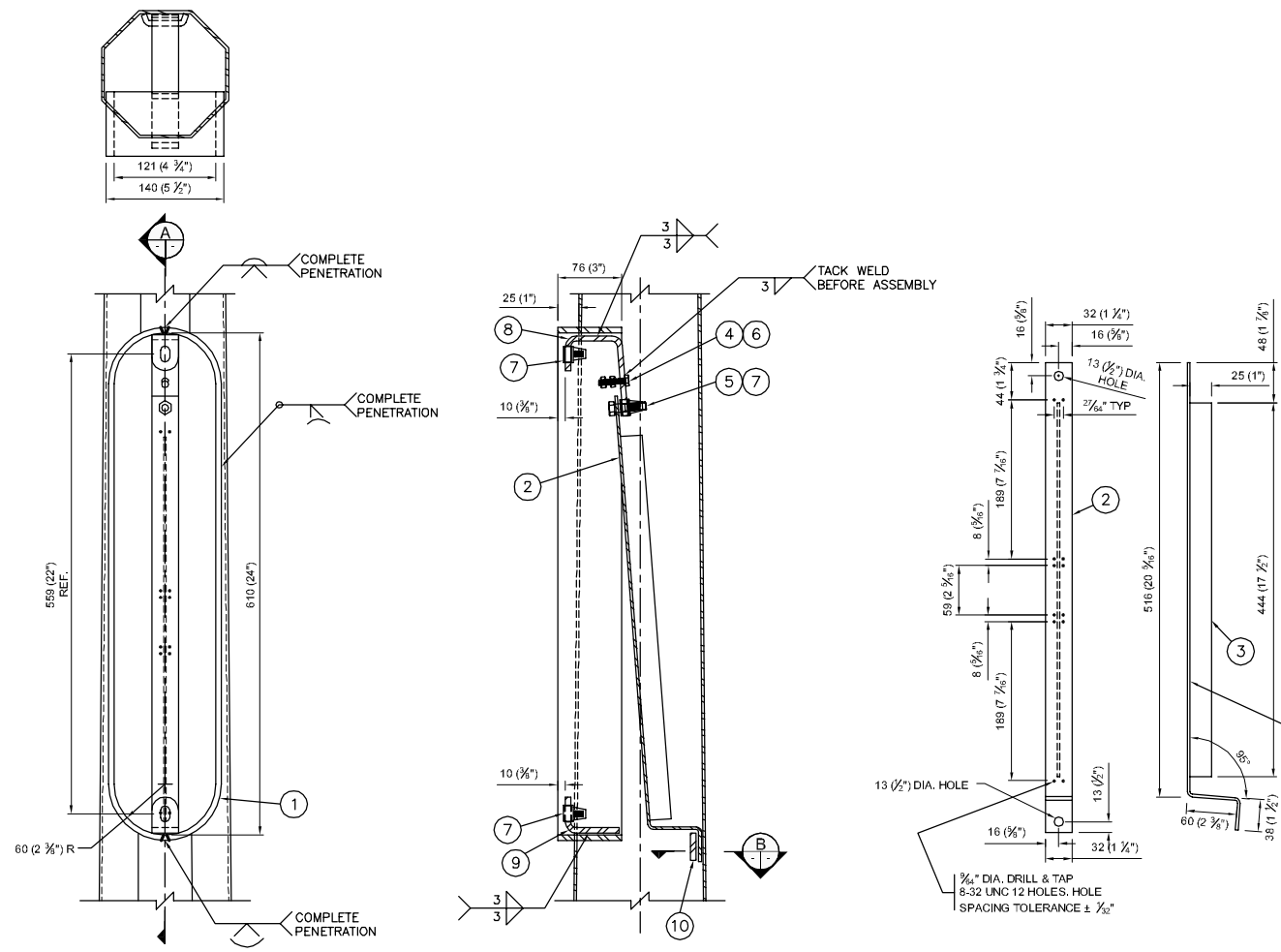
BILL OF MATERIALS

MK. NO.	QTY. REQ'D.	DESCRIPTION	SIZE	MATERIAL	REMARKS	LINE NO.
		ACCESS PANEL				1
1	2	ACCESS PANEL RING	9.5 x 76 x 686 ($\frac{3}{8}$ " x 3" x 27")	CSA G40.21 300W		2
2	1	TERMINAL STRIP BRACKET	4.55 x 32 x 614 (7 GA. x 1 $\frac{1}{4}$ " x 24 $\frac{3}{16}$ ")	CSA G40.21 350W	RE-TAP AFTER GALVANIZING	3
3	1	TERMINAL REINFORCING STRIP	3.04 x 25 x 444 (11 GA. x 1" x 17 $\frac{1}{2}$ ")	CSA G40.21 350W		4
4	1	HEX BOLT	$\frac{1}{4}$ "-20 UNC FULL THREAD x 1 $\frac{1}{2}$ " LONG	ASTM F593 TYPE 316	RE-TAP AFTER GALVANIZING	5
5	1	HEX BOLT	$\frac{3}{8}$ "-16 UNC FULL THREAD x 1 $\frac{1}{2}$ " LONG	ASTM F593 TYPE 316		6
6	2	HEX NUT	$\frac{1}{4}$ "-20 UNC	ASTM F593 TYPE 316		7
7	3	AU-VE-CO NO. 10054 NUT OR EQUAL	$\frac{3}{8}$ "-16 UNC	STEEL PLATED		8
8	1	UPPER BRACKET	6.35 x 32 x 191 ($\frac{1}{4}$ " x 1 $\frac{1}{4}$ " x 7 $\frac{1}{2}$ ")	CSA G40.21 300W		9
9	1	LOWER BRACKET	6.35 x 32 x 102 ($\frac{1}{4}$ " x 1 $\frac{1}{4}$ " x 4")	CSA G40.21 300W		10
10	1	KEEPER BRACKET	6.35 x 32 x 64 ($\frac{1}{4}$ " x 1 $\frac{1}{4}$ " x 2 $\frac{1}{2}$ ")	CSA G40.21 300W		11
11	2	TAMPER PROOF CUP WASHER	16 GA.	ASTM B209 GR. 3003-H14	SUITABLE FOR 3/8" BOLT	12
12	2	HEX BOLT	$\frac{3}{8}$ "-16 UNC FULL THREAD x 2 $\frac{1}{2}$ " LONG	ASTM F593 TYPE 316		13
						14
13	1	NON-METALLIC ACCESS PANEL COVER			SUPPLIED BY OTHERS	15

APPROXIMATE TOTAL MASS = 10 kg

NOTES:

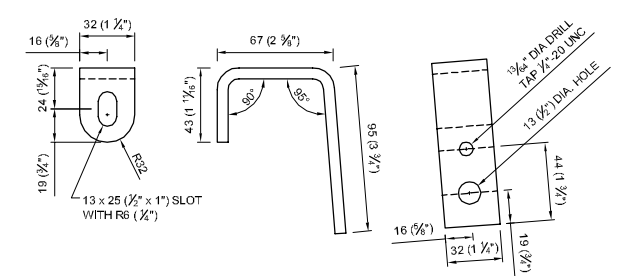
- ALL MATERIALS, EXCEPT STAINLESS STEEL ITEMS, SHALL BE HOT DIP GALVANIZED IN ACCORDANCE WITH ASTM A123-09 (PLUS LATEST REVISIONS) WITH NET RETENTION OF 610 g/m².
- SHIP WITH MK. 11 & 12 INSTALLED IN MK. 7 (TOP AND BOTTOM).
- GRIND ALL SHARP POINTS AND EDGES.
- WHERE METRIC AND IMPERIAL UNITS ARE SHOWN, IMPERIAL UNITS SHALL TAKE PRECEDENCE.
- NON-METALLIC ACCESS PANEL COVER SUPPLIED BY OTHERS.



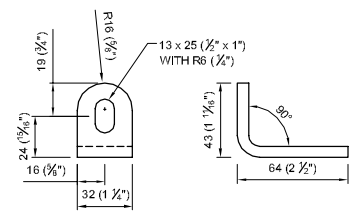
FRONT VIEW
 MK. 11, 12 & 13 NOT SHOWN FOR CLARITY

SECTION A

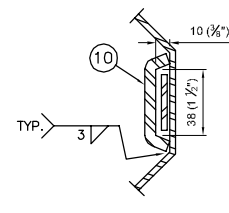
TERMINAL STRIP BRACKET



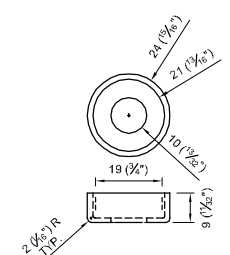
UPPER BRACKET 8



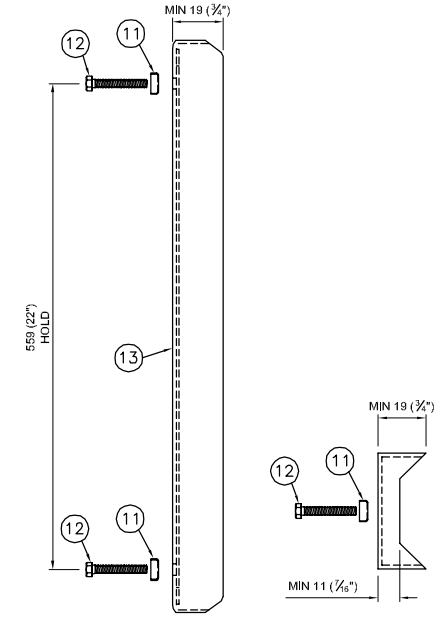
LOWER BRACKET 9



SECTION B



CUP WASHER 11



SECTION PLAN
 ACCESS PANEL COVER

G:\CAD\125954\Contract\Current\ACCESS_PANEL.dwg

APEGM
 Certificate of Authorization
 Dillon Consulting Limited (MB)
 No. 1789 Date: JAN. 14, 2013

REDUCED DRAWING
 N.T.S.

NO.	REVISIONS	DATE	BY	DATE
2	REVISED BY DILLON CONSULTING	1/10/14	CDW	
1	ISSUED BY DILLON CONSULTING	1/14/13	CDW	

DESIGNED BY	CDW
DRAWN BY	JGW
CHECKED BY	SSR
APPROVED BY	-
HOR. SCALE	NTS
VERTICAL	NTS

DILLON CONSULTING

ENGINEER'S SEAL
 PROVINCE OF MANITOBA
 ORIGINAL STAMPED BY
S.S. RIHAL
 JAN. 14, 2013
 REGISTERED PROFESSIONAL ENGINEER

THE CITY OF WINNIPEG
 PUBLIC WORKS DEPARTMENT

Winnipeg

ACCESS PANEL DETAILS

CITY DRAWING NUMBER
 N/A

SHEET 17 OF 17
 CONSULTANT DRAWING NUMBER
 N/A

CONSULTANT PROJECT NUMBER
 12-5954